

# CLASS A MEDICAL PROPERTY ON THE TRINITAS MEDICAL CENTER CAMPUS

200 WILLIAMSON STREET  
ELIZABETH, NJ 07202

## DOUBLE INCENTIVE OFFER!

6% to the procuring broker & 5 months abated rent to new tenants\*

\*Both for leases signed by January 30th, 2025

## PROPERTY OVERVIEW

**BUILDING SF:** 46,191 RSF

**AVAILABLE SF:** Suite 160: 2,279 SF  
Suite 220: 4,201 SF Divisible  
Suite 250: 3,184 SF  
Suite 360: 2,926 SF

**ASKING RATE:** Call for Rental Rates

**AMENITIES:**

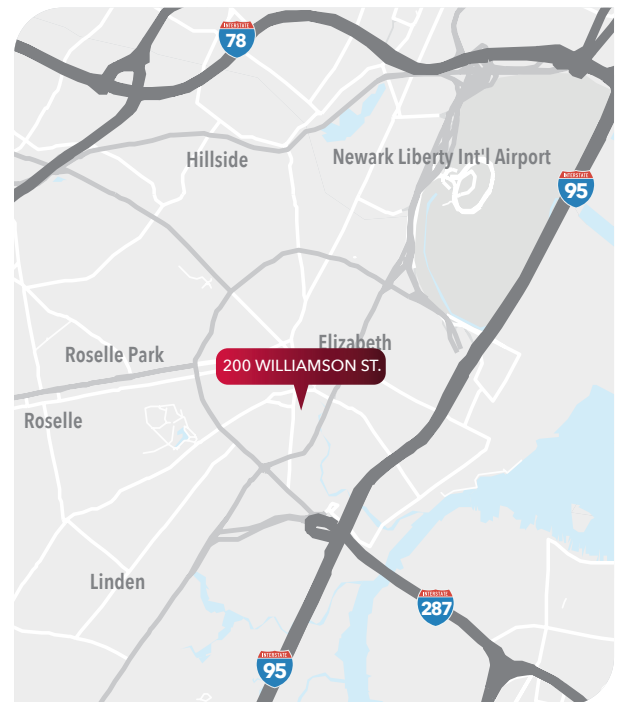
- Newly Constructed
- Professionally Owned and Managed
- On-Site Property Management
- Generous Tenant Improvement Allowance

**COMMENTS:**

- Suites are designed and built to physicians exact specifications
- Energy Efficient
- Excellent Visibility
- Tenants receive an ownership interest in the building at no cost – equity buy-in is not required.

**LOCATION:**

- Accessible to Major Roadways



## FOR MORE INFORMATION CONTACT EXCLUSIVE BROKERS:

Erica Davidson

erica.davidson@lee-associates.com

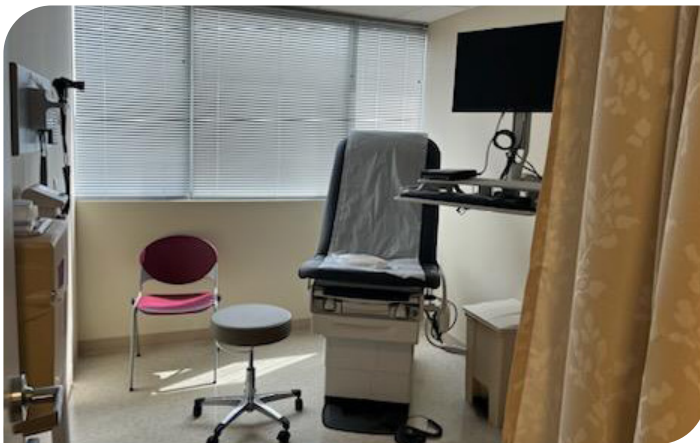
C 973.214.9733

All information furnished regarding property for sale, rental or financing is from sources deemed reliable, but no warranty or representation is made to the accuracy thereof and same is submitted to errors, omissions, change of price, rental or other conditions prior to sale, lease or financing or withdrawal without notice. Buyer acknowledges that Lee & Associates of New Jersey, LLC ("Broker") has not verified the information contained herein and does not make any representation about its accuracy. Buyer should confirm information contained in the Offering using its own sources. No liability of any kind is to be imposed on Broker herein.

# CLASS A MEDICAL PROPERTY ON THE TRINITAS MEDICAL CENTER CAMPUS

200 WILLIAMSON STREET  
ELIZABETH, NJ 07202

## INTERIOR PHOTOS



### FOR MORE INFORMATION CONTACT EXCLUSIVE BROKERS:

**Erica Davidson**  
erica.davidson@lee-associates.com  
C 973.214.9733

All information furnished regarding property for sale, rental or financing is from sources deemed reliable, but no warranty or representation is made to the accuracy thereof and same is submitted to errors, omissions, change of price, rental or other conditions prior to sale, lease or financing or withdrawal without notice. Buyer acknowledges that Lee & Associates of New Jersey, LLC ("Broker") has not verified the information contained herein and does not make any representation about its accuracy. Buyer should confirm information contained in the Offering using its own sources. No liability of any kind is to be imposed on Broker herein.

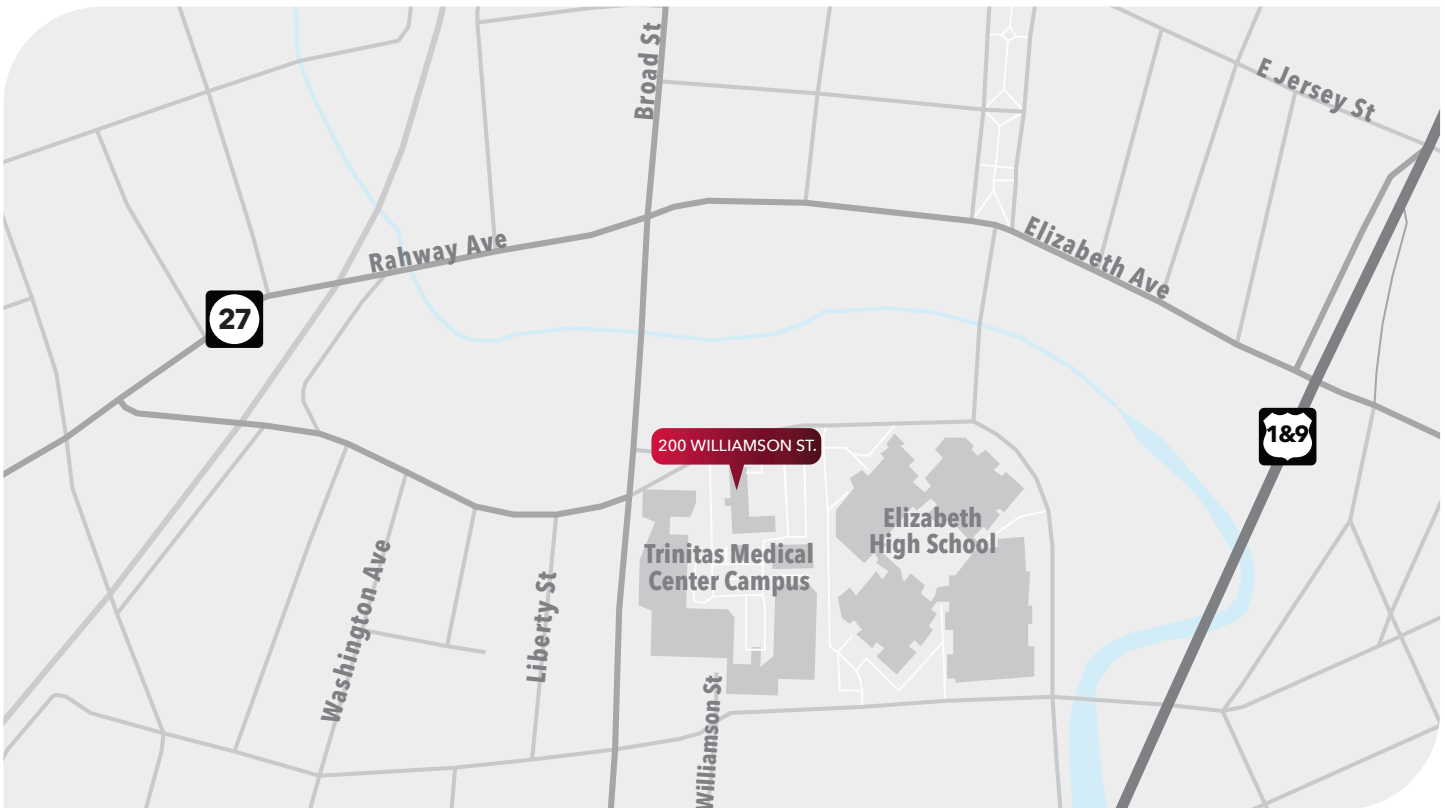
# CLASS A MEDICAL PROPERTY ON THE TRINITAS MEDICAL CENTER CAMPUS

200 WILLIAMSON STREET  
ELIZABETH, NJ 07202

## INTERIOR PHOTOS (CONT.)



## AREA MAP



### FOR MORE INFORMATION CONTACT EXCLUSIVE BROKERS:

Erica Davidson  
erica.davidson@lee-associates.com  
C 973.214.9733

All information furnished regarding property for sale, rental or financing is from sources deemed reliable, but no warranty or representation is made to the accuracy thereof and same is submitted to errors, omissions, change of price, rental or other conditions prior to sale, lease or financing or withdrawal without notice. Buyer acknowledges that Lee & Associates of New Jersey, LLC ("Broker") has not verified the information contained herein and does not make any representation about its accuracy. Buyer should confirm information contained in the Offering using its own sources. No liability of any kind is to be imposed on Broker herein.