



FOR LEASE

\$32.50 PSF

BEAUMONT PLAZA

6701 Montrose Boulevard, Beaumont, Alberta

RE/MAX Excellence Commercial Division is proud to present an investment opportunity in Beaumont, featuring flexible commercial space.

Strategically positioned on Montrose Boulevard, this commercial property benefits from strong connectivity to Edmonton's south side and the Nisku Industrial Park, placing it at the heart of one of the region's most active commercial corridors. The surrounding area is a mix of established retail, office, and service-oriented businesses, supporting a vibrant local economy and consistent foot and vehicular traffic.

The property is well-suited for restaurants, fitness studios, professional offices, medical or dental clinics, and specialty retail, catering to both local residents and regional traffic. Its proximity to major highways and nearby amenities enhances tenant appeal, while the developed nature of the area ensures long-term investment stability.

Offering reliable lease rates and additional rent, this asset provides a strong income-producing opportunity. Possession is available Fall 2027, giving investors ample time to plan tenant placement and capitalize on a fully developed, high-demand commercial district with excellent growth potential.



[View On Street](#)



[View On Maps](#)

RE/MAX
COMMERCIAL
RE/MAX EXCELLENCE
COMMERCIAL DIVISION

DEAN DRYSDALE

Vice President

 (780) 953 4585

 deandrysdale@gmail.com

CHRISTIAN JONES

Vice President

 (780) 716 2851

 1988jones@gmail.com

PROPERTY DETAILS

Address	6701 Montrose Boulevard
Size	± 1,000 - 12,000 SF
Zoning	Commercial District
Lease Rate	\$32.50
Additional Rent	\$11.00 (estimated)
Possession	Fall 2027



1. **ANYTIME FITNESS**
Tim Hortons

2. **NOFRILLS**
KFC
A&W



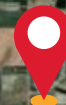
ACCESS:

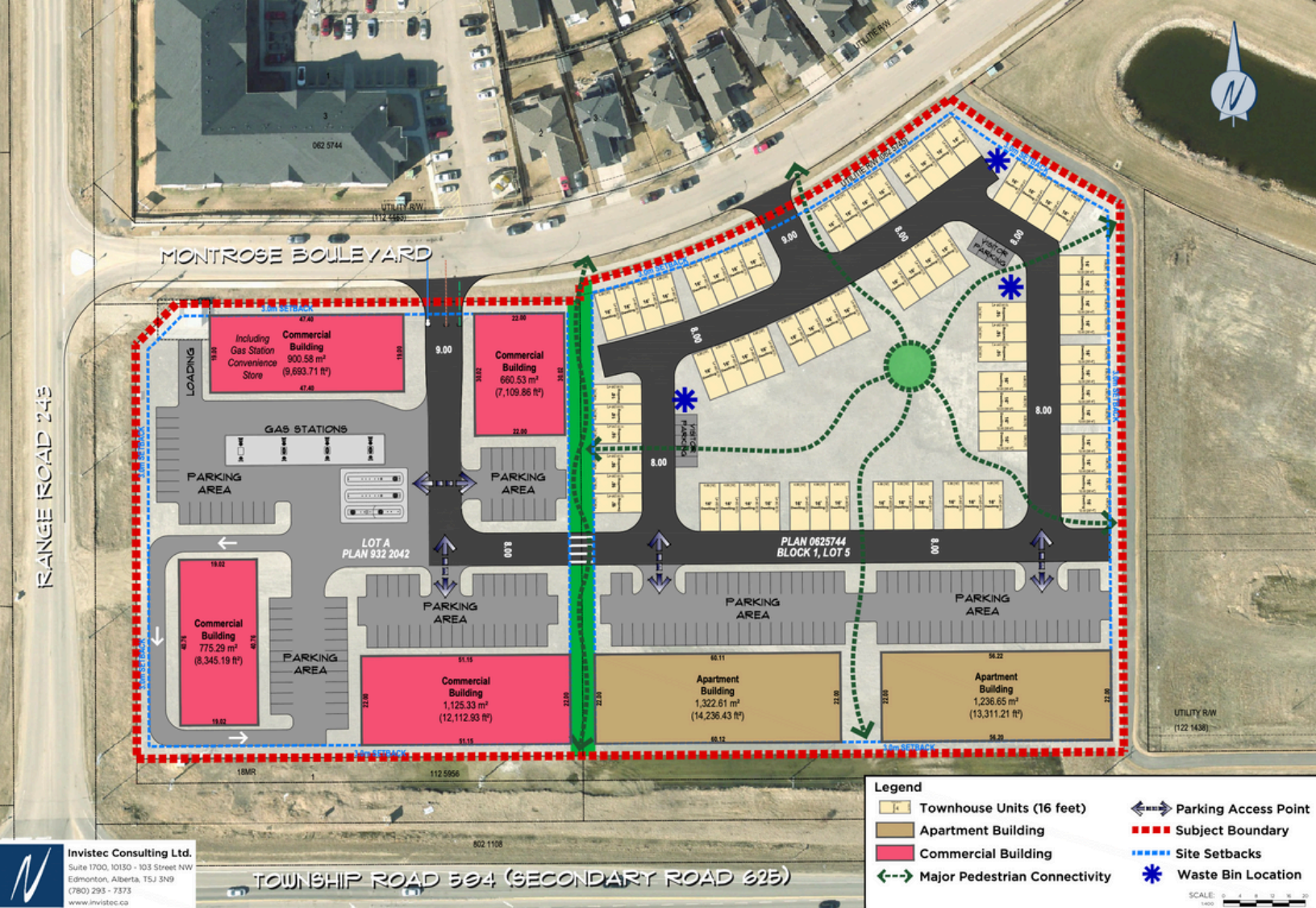
1. **Summerside in South Edmonton**
13.4 KM, 13 minute drive
2. **Nisku**
7.2 KM, 8 minute drive

Summerside

Beaumont

Nisku





CONTACT:

DEAN DRYSDALE

Vice President | Industrial Sales & Leasing

(780) 953 4585

deandrysdale@gmail.com

CHRISTIAN JONES

Vice President

(780) 716 2851

1988jones@gmail.com



RE/MAX
COMMERCIAL
RE/MAX EXCELLENCE
COMMERCIAL DIVISION