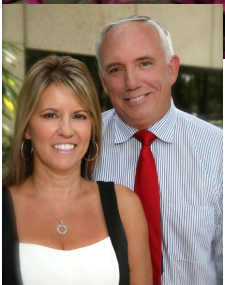


# Westhall Executive Center

## Maitland Center

2700 Westhall Lane

Maitland, Florida 32751



COMMERCIAL REAL ESTATE

### Westhall Executive Center

#### Key Features

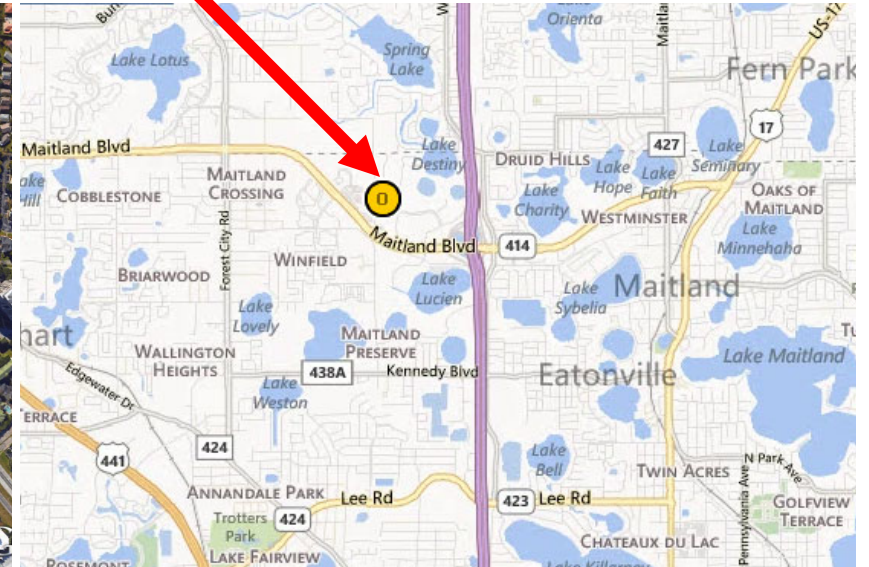
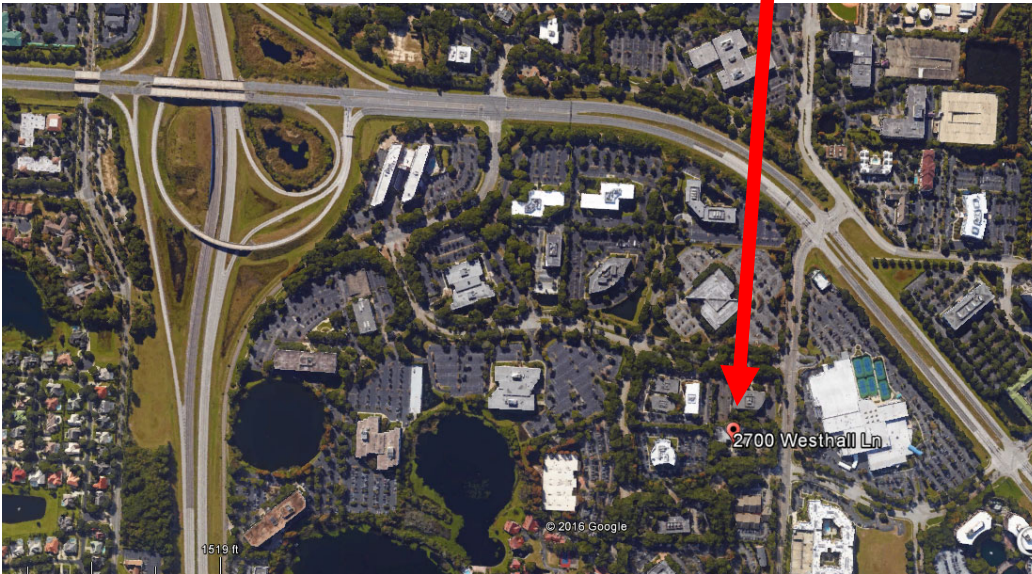
- Central Maitland Center Location
  - Easy Access to I-4, SR 414 (Maitland Blvd.), SR 434
- Nearby Hotels and Restaurants and Stores
- Building Features Include:
  - Common Conference Room
  - Security System with 24/7 Magnetic Control Access
  - Video Security Camera System
  - Energy Efficient Building Control System
    - 24/7 HVAC System Availability
    - Tenant Controlled Thermostat
    - After-Hour HVAC Override @ \$15.00 Hour
- Multiple Internet Service Providers - Competitive Rates
- On-Site Ownership and Management - Deal with the owner directly rather than a third party manager
- Park-Like Setting with Picnic Tables and Benches

Atkins Commercial Real Estate LLC

2700 Westhall Lane, Suite 120 Maitland, Florida 32751

# Westhall Executive Center

## Location Maps



# Westhall Executive Center

## First Floor

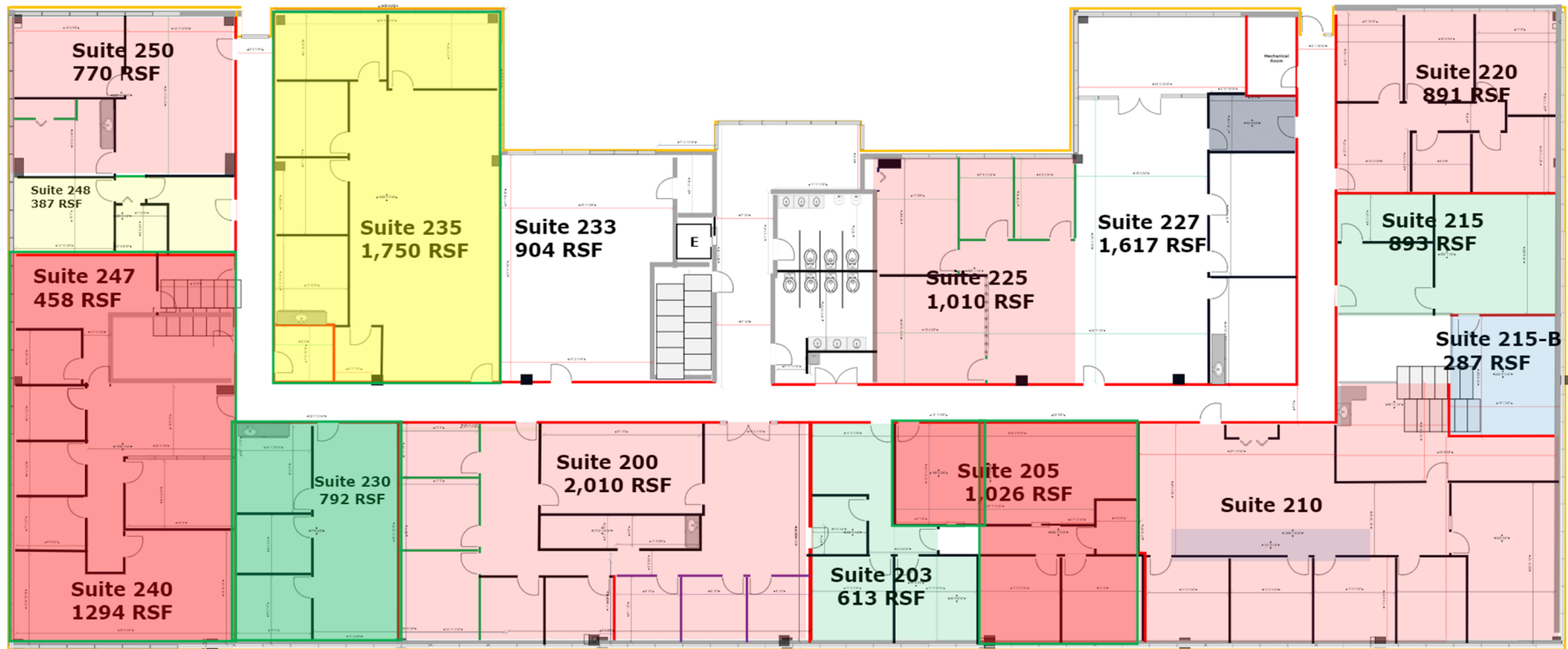
Available Suites are White



# Westhall Executive Center

## Second Floor

Available Suites are White



COMMERCIAL REAL ESTATE

Bob Atkins

Atkins Commercial Real Estate LLC

2700 Westhall Lane, Suite 120

Maitland, Florida 32751

O: 407-875-8040 M: 407-257-5499 Email: bob@atkinacre.com

# Westhall Executive Center

## Common Area Conference Room—1st Floor East Wing



Bob Atkins

Atkins Commercial Real Estate LLC

2700 Westhall Lane, Suite 120

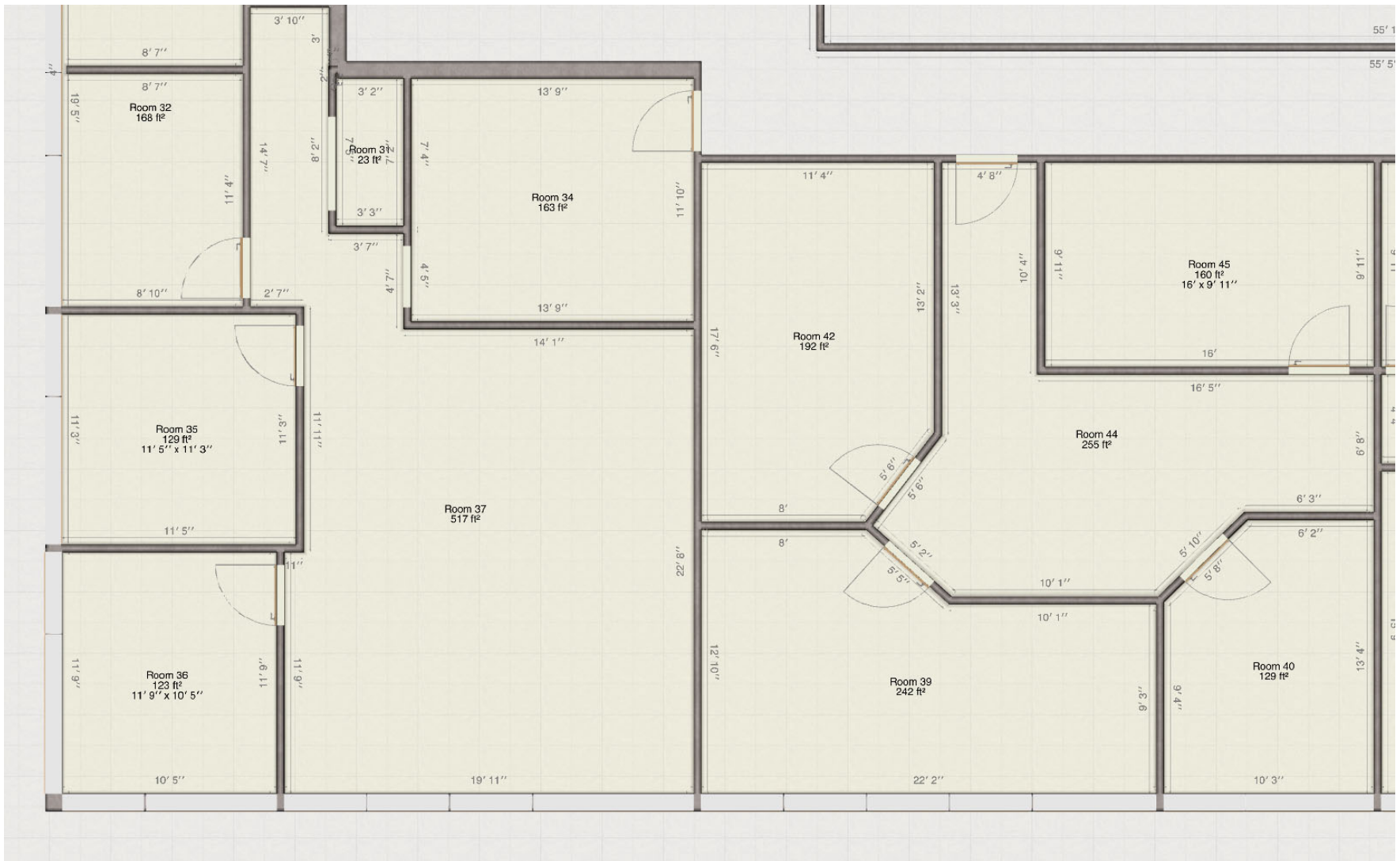
Maitland, Florida 32751

O: 407-875-8040 M: 407-257-5499 Email: bob@Atkinacre.com

# Westhall Executive Center

## Suite 135 & 137

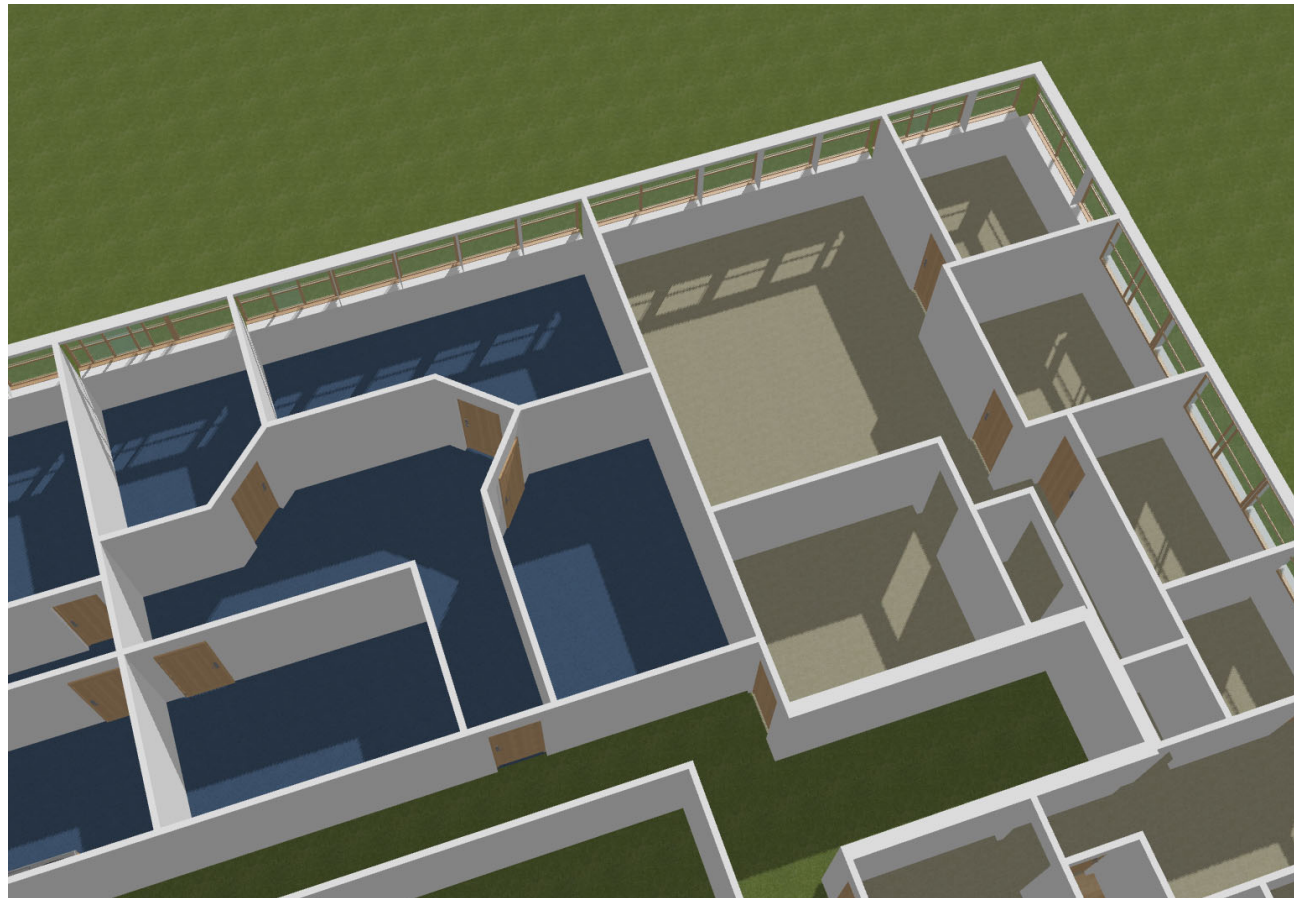
1,218 + 1297 RSF = 2,515



# Westhall Executive Center

## Suite 135 & 137

1,218 + 1297 RSF = 2,515



Bob Atkins

Atkins Commercial Real Estate LLC

2700 Westhall Lane, Suite 120

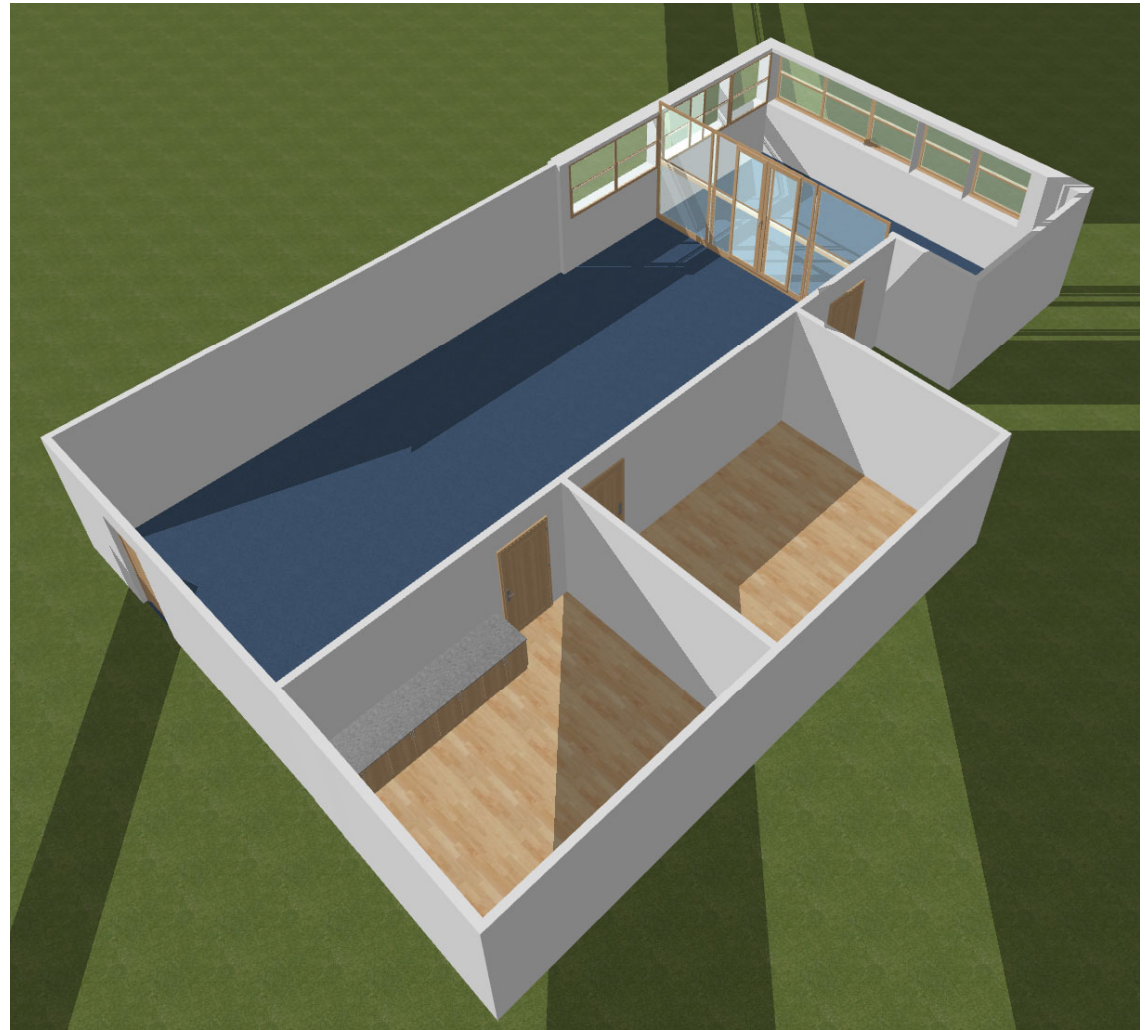
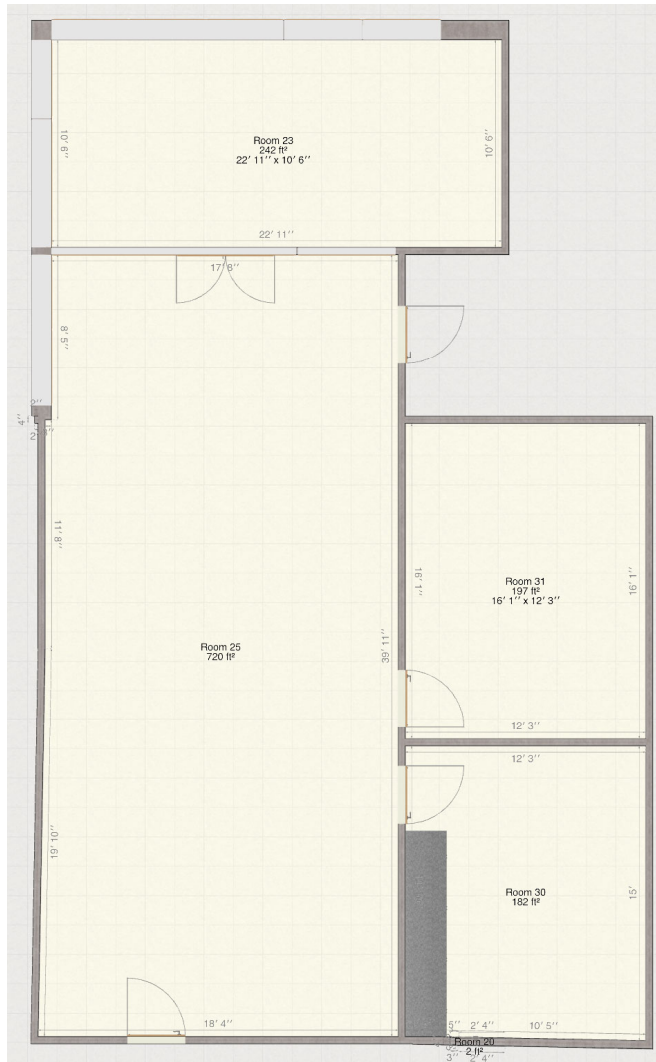
Maitland, Florida 32751

O: 407-875-8040 M: 407-257-5499 Email: bob@Atkinacre.com

# Westhall Executive Center

## Suite 227

1617 RSF





# Westhall Executive Center

## Suite 233

902 RSF

