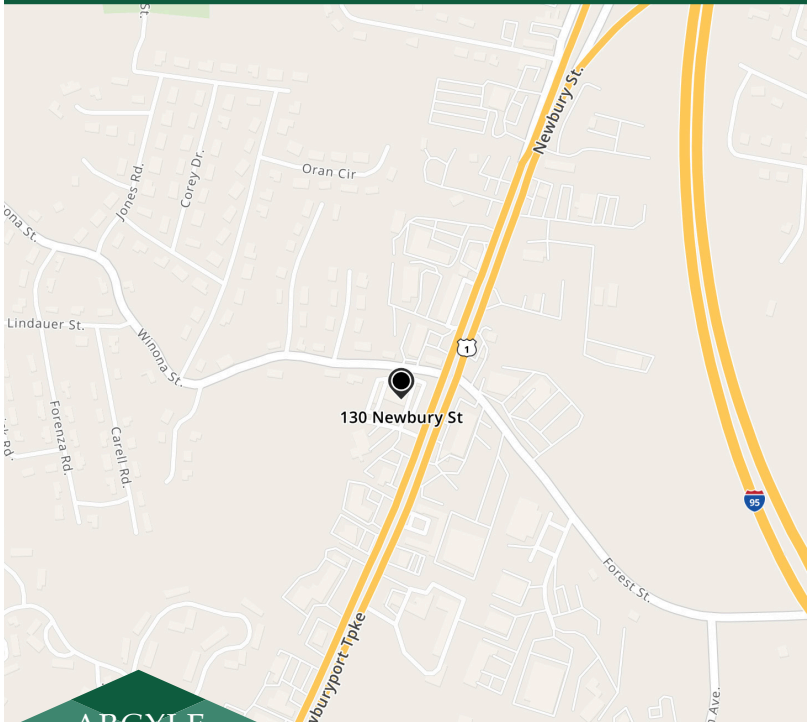


THE SHOPS ON NEWBURY STREET

5,768 SF SUBDIVIDABLE TO 1,442 SF

130 Newbury Street • Peabody, MA



- **For Lease up to 5,768 sf subdividable to 1,442 SF with basement space available for storage**
- Parallel visibility to Newbury Street (Route 1)
- Average Daily Traffic: 76,000+ Cars
- 120 parking spaces
- Pylon signage
- Entrance to property is shared with a new Trammel Crow residential 180 unit family development (completion date of Q4 2025)
- Co-tenants: Honey Dew Donuts & Luxe Beauty Spa

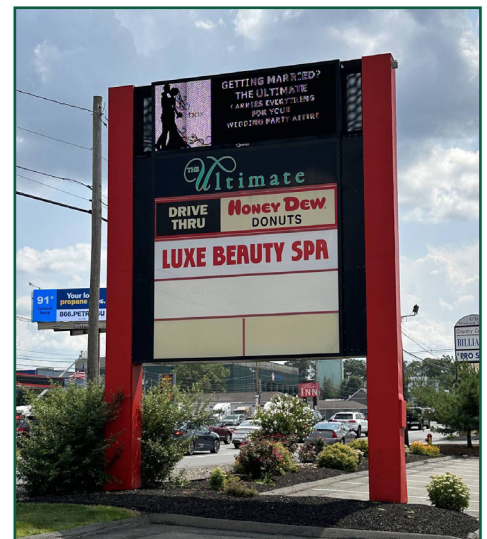
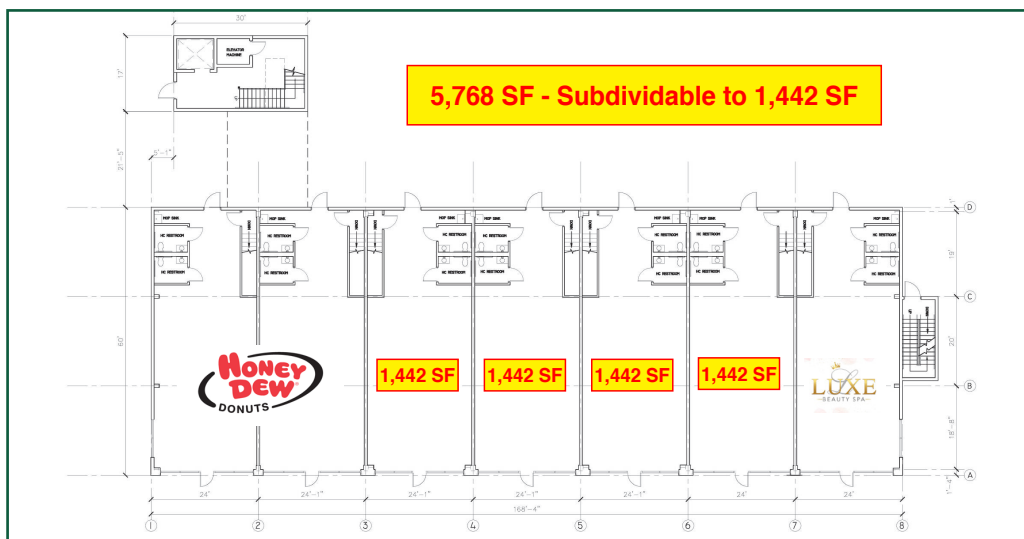


Argyle Realty Group, LLC - Daniel J. Connelly
21 High Street, Suite 305B - North Andover, MA 01845
dan@arg.boston - 617.784.3239

THE SHOPS ON NEWBURY STREET

5,768 SF SUBDIVIDABLE TO 1,442 SF

130 Newbury Street • Peabody, MA



Argyle Realty Group, LLC - Daniel J. Connelly
 21 High Street, Suite 305B - North Andover, MA 01845
 dan@arg.boston - 617.784.3239