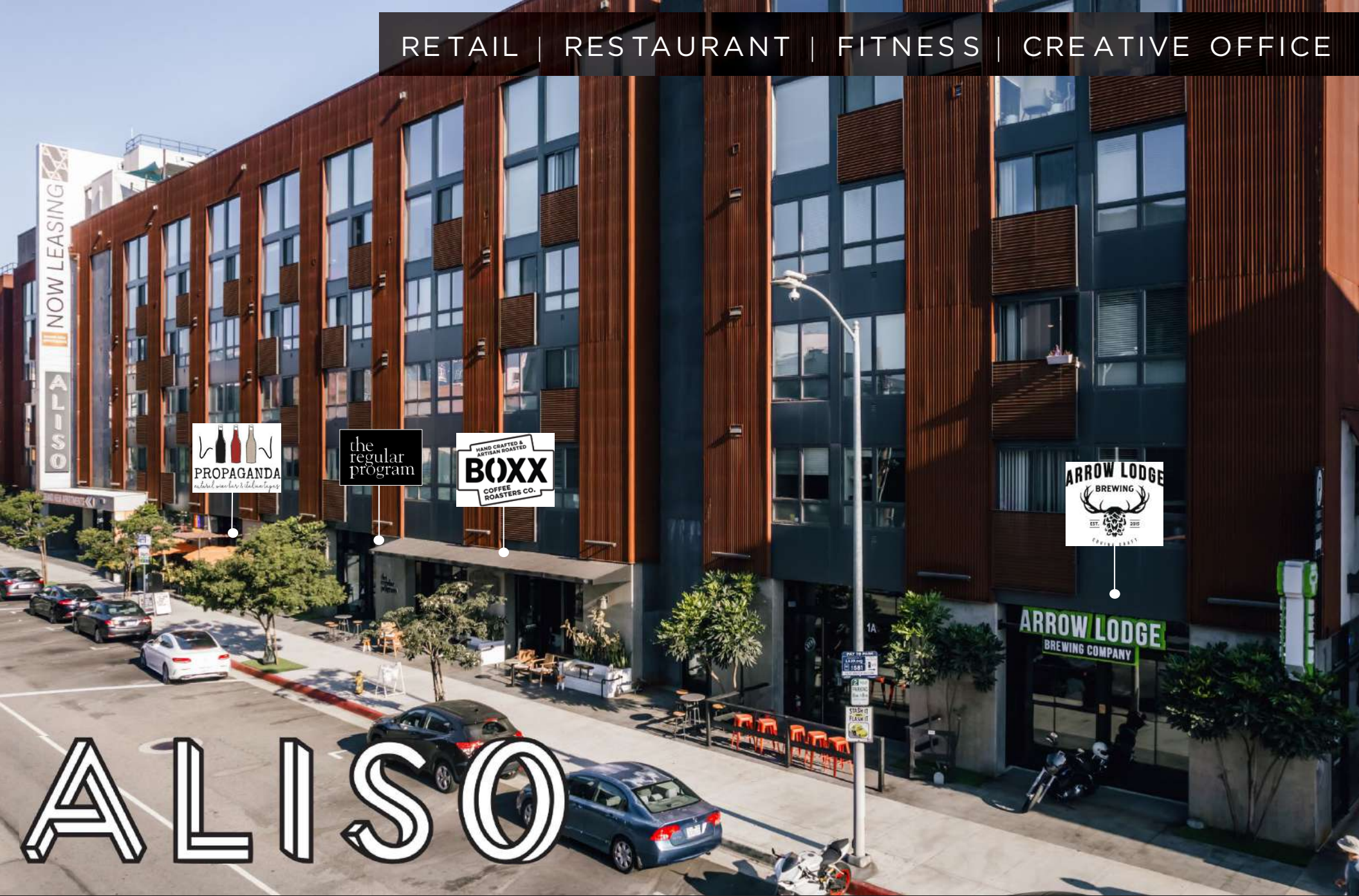


RETAIL | RESTAURANT | FITNESS | CREATIVE OFFICE



ALISO

ARTS DISTRICT
DOWNTOWN LA

NEWMARK

JAY LUCHS
Vice Chairman
T 310-407-6585
jay.luchs@nmrk.com
CA RE Lic. #01260345
Jayluchs.com



BRIAN ABDI
Director
T 310-275-9222
ba@bridgerealestate.com
CA RE Lic. #01879399

JOIN THESE TENANTS AT ALISO

LOCATED ACROSS WORLD RENOWN HAUSER + WIRTH GALLERY



SAMA SUSHI



ALISO

NEWMARK

JAY LUCHS
Vice Chairman
T 310-407-6585
jay.luchs@nmrk.com
CA RE Lic. #01260345
Jayluchs.com



BRIAN ABDI
Director
T 310-275-9222
ba@bridgerealestate.com
CA RE Lic. #01879399



THE ARTS DISTRICT

THE ARTS DISTRICT IN DOWNTOWN LOS ANGELES IS ONE OF THE HOTTEST NEIGHBORHOODS

Located just east of **Little Tokyo** and west of the **L.A. River**, the Arts District is at the height of Downtown L.A.'s renaissance.

What started as an urban artist's colony in the 1970's has recently become a hotbed for creators from all arenas, making it one of the city's most exciting neighborhoods to visit.

Traction Avenue and **East 3rd Street** have become the epicenter of dining and shopping for the north end of the district. Prominent galleries such as **Hauser and Wirth**, and eateries like **Wurstküche**, **Pie Hole** and the **Arts District Brewery** have not only become local favorites but popular attractions for visitors and tourists.

Today, along with the great eateries and galleries, renown retailers are positioning themselves to open flagship stores on East 3rd Street such as **Le Labo** and **Shinola**.



ALISO

NEWMARK

JAY LUCHS
Vice Chairman
T 310-407-6585
jay.luchs@nmrk.com
CA RE Lic. #01260345
Jayluchs.com

BRIDGE
REAL ESTATE

BRIAN ABDI
Director
T 310-275-9222
ba@bridgerealestate.com
CA RE Lic. #01879399

CORNER RESTAURANT SPACE AVAILABLE

2,847 SF Available plus 1,000+ SF Patio



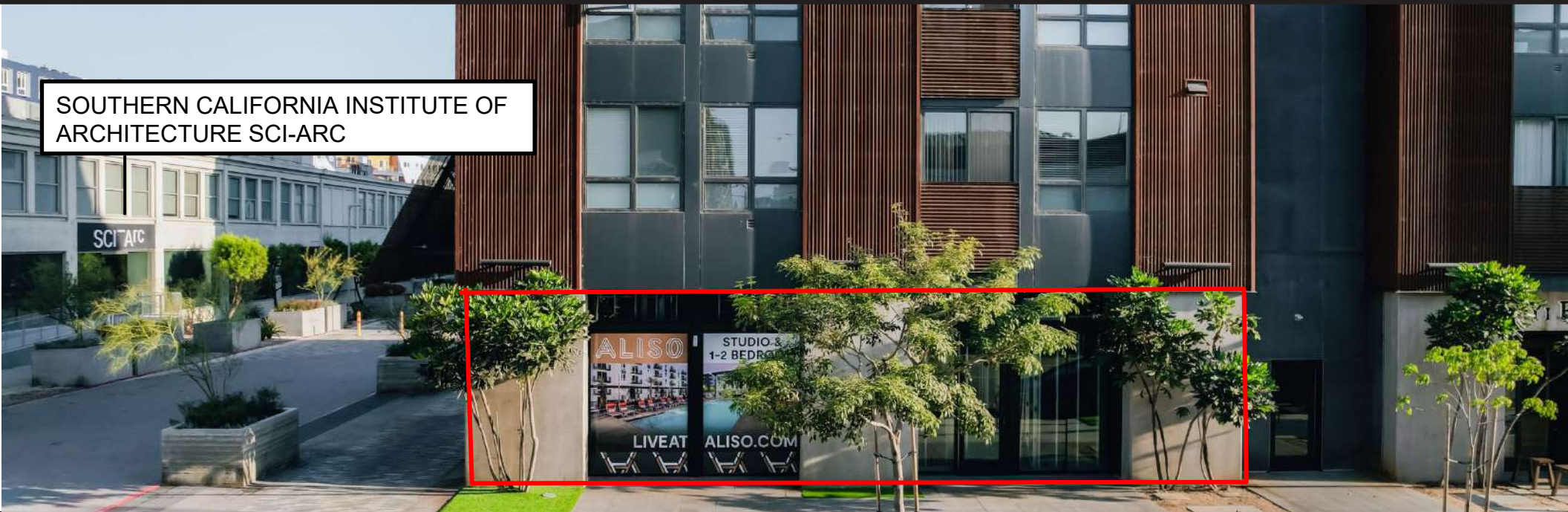
PARKING

180 Spaces on-site



RESTAURANT SPACE AVAILABLE
2,847 SF + 1,000 SF PATIO

SOUTHERN CALIFORNIA INSTITUTE OF ARCHITECTURE SCI-ARC



ALISO

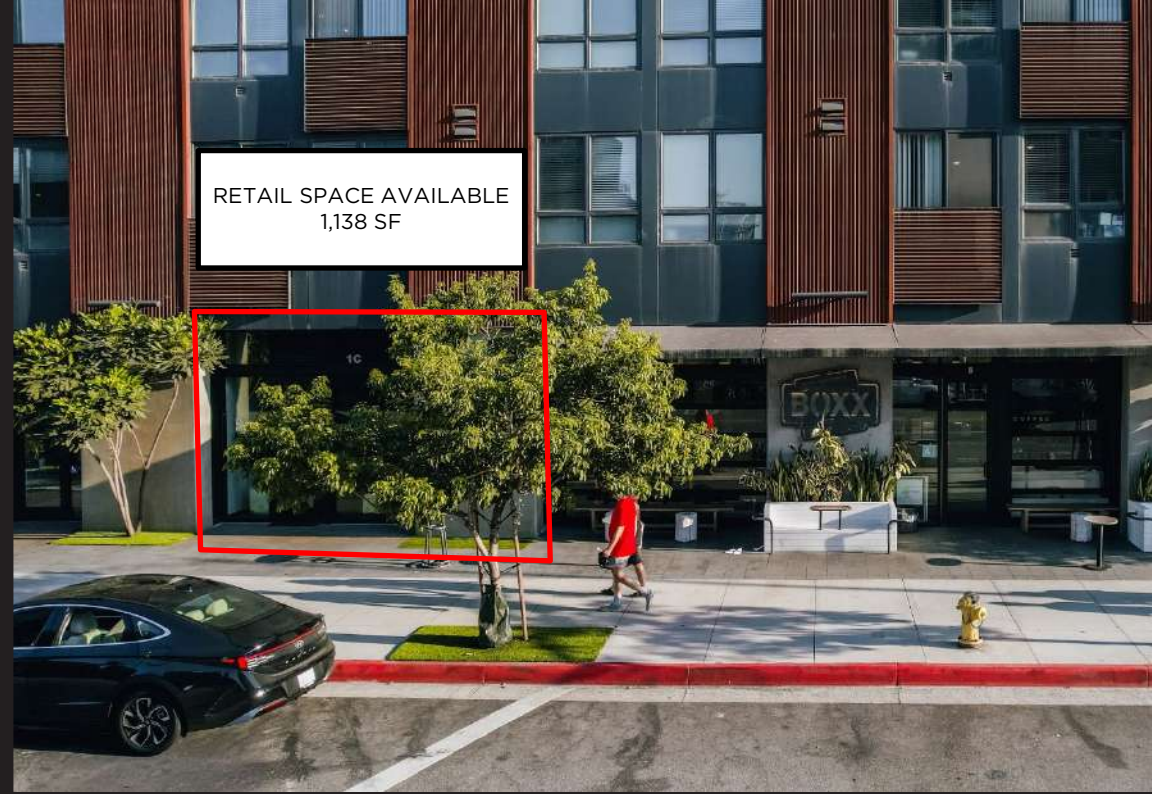
NEWMARK

JAY LUCHS
Vice Chairman
T 310-407-6585
jay.luchs@nrmk.com
CA RE Lic. #01260345
jayluchs.com

BRIAN ABDI
Director
T 310-275-9222
ba@bridgerealestate.com
CA RE Lic. #01879399

RETAIL SPACE 1C AVAILABLE

1,138 SF Available



ALISO

NEWMARK

JAY LUCHS
Vice Chairman
T 310-407-6585
jay.luchs@nmrk.com
CA RE Lic. #01260345
jayluchs.com

BR
BRIDGE
REAL ESTATE

BRIAN ABDI
Director
T 310-275-9222
ba@bridgerealestate.com
CA RE Lic. #01879399

AVAILABLE SPACE

RETAIL/RESTAURANT/FITNESS

RETAIL #1C

±2,265 SF

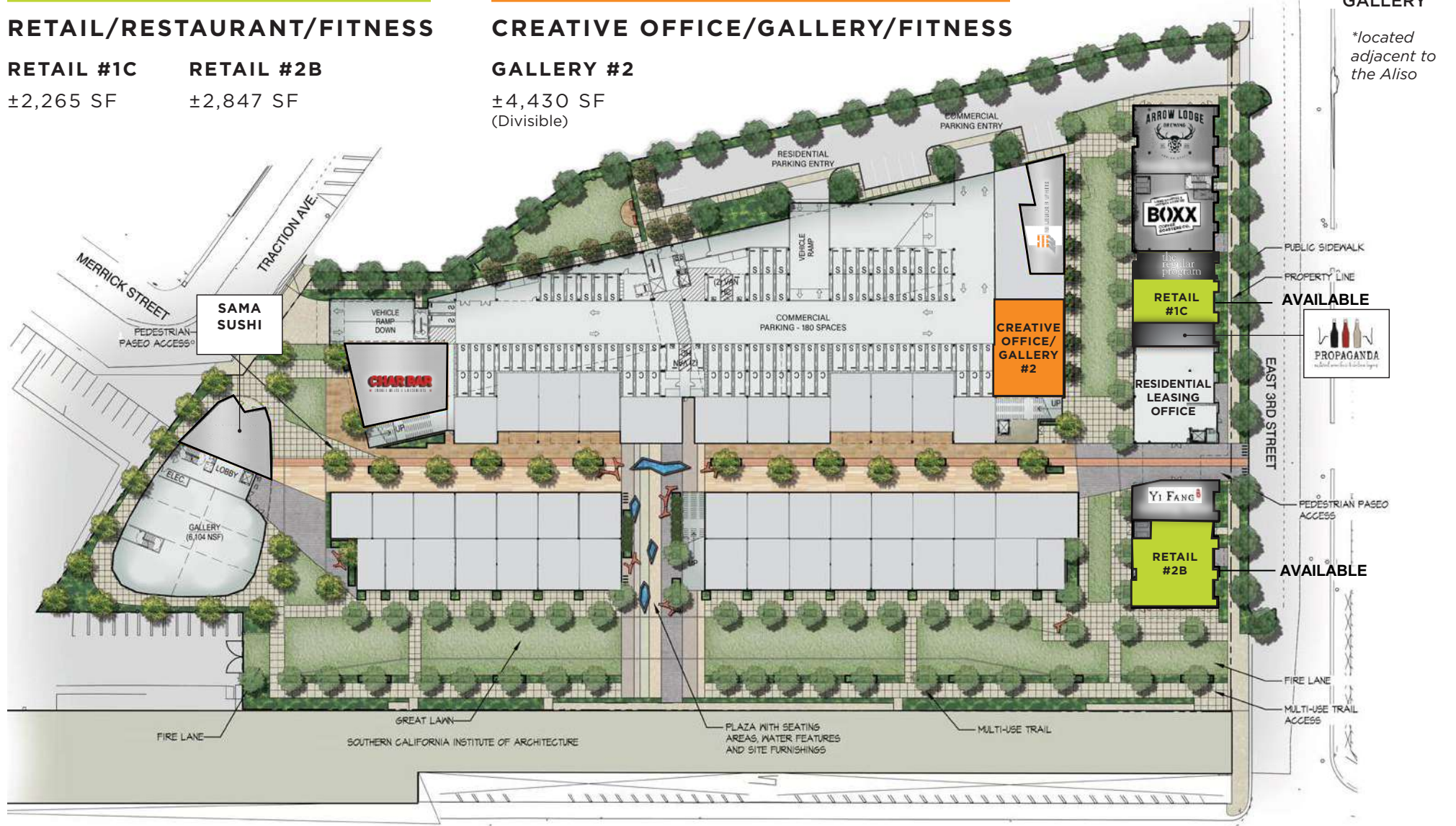
RETAIL #2B

±2,847 SF

CREATIVE OFFICE/GALLERY/FITNESS

GALLERY #2

±4,430 SF
(Divisible)



ALISO

NEWMARK

JAY LUCHS
Vice Chairman
T 310-407-6585
jay.luchs@nrmk.com
CA RE Lic. #01260345
jayluchs.com

BRIDGE
REAL ESTATE

BRIAN ABDI
Director
T 310-275-9222
ba@bridgerealestate.com
CA RE Lic. #01879399

AVAILABLE SPACE

RETAIL/RESTAURANT/FITNESS

RETAIL #1C

±1,138 SF

RETAIL #2B

±2,847 SF

RATE AVAILABLE UPON REQUEST



ALISO

NEWMARK

JAY LUCHS
 Vice Chairman
 T 310-407-6585
 jay.luchs@nmrk.com
 CA RE Lic. #01260345
 jayluchs.com

BRIDGE
 REAL ESTATE

BRIAN ABDI
 Director
 T 310-275-9222
 ba@bridgrealestate.com
 CA RE Lic. #01879399



ALISO
COMMERCIAL REAL ESTATE

BRIAN ABDI
310.275.9222

JAY LUCHS
310.407.6585

ALISO
LEASING CENTER

Entrance to Retail #1C



Retail #1C interior

ALISO

NEWMARK

JAY LUCHS
Vice Chairman
T 310-407-6585
jay.luchs@nmrk.com
CA RE Lic. #01260345
Jayluchs.com

BRIDGE
REAL ESTATE

BRIAN ABDI
Director
T 310-275-9222
ba@bridgerealestate.com
CA RE Lic. #01879399

AVAILABLE SPACE

CREATIVE OFFICE/GALLERY/FITNESS

GALLERY #2

±3,800 SF
(Divisible)

RATE AVAILABLE UPON REQUEST



ALISO

NEWMARK

JAY LUCHS
Vice Chairman
T 310-407-6585
jay.luchs@nmrk.com
CA RE Lic. #01260345
jayluchs.com

BRIAN ABDI
Director
T 310-275-9222
ba@bridgerealestate.com
CA RE Lic. #01879399

APPROXIMATELY
3,800 SF
(DIVISIBLE)

25+ FT CEILING
HEIGHT



RETAIL
OFFICE
SHOWROOM
INDUSTRIAL
FITNESS



ALISO

NEWMARK

JAY LUCHS
Vice Chairman
T 310-407-6585
jay.luchs@nmrk.com
CA RE Lic. #01260345
Jayluchs.com

BRIDGE
REAL ESTATE

BRIAN ABDI
Director
T 310-275-9222
ba@bridgerealestate.com
CA RE Lic. #01879399



Urth Caffé, Resident
3 mins 🚶 12 mins 🚶

Arts District
Brewing Company
5 mins 🚶

The Pie Hole
4 mins 🚶

Umami Burger,
3.1 Phillip Lim
4 mins 🚶

Staples Center, LA Live,
LA Convention Center
10 mins 🚶

The Geffen
Contemporary at MOCA
3 mins 🚶 11 mins 🚶

Groundwork Coffee
Co, Pali Wine Co,
Lou's Hot Chicken
4 mins 🚶

Wurstküche
3 mins 🚶

Angel City Brewery
7 mins 🚶

Wolf & Crane
Bar, Poketo
8 mins 🚶

Alchemy Works, Warby Parker
2 mins 🚶

Salt & Straw, go get
em tiger, Shinola
2 mins 🚶

Inko Nito
2 mins 🚶

Manuela
2 mins 🚶

Hauser & Wirth
1 min 🚶

Eat Drink Americano
1 min 🚶

AVAILABLE



the regular program

3RD STREET

YI FANG
TAIWAN FRESH TEA
— 芳自園水果茶

AVAILABLE

Southern California
Institute of Architecture
1 min 🚶

Hammer and Spear
2 mins 🚶

Café Gratitude, Bulletproof Coffee, Van Leeuwen
Ice Cream, Hennessey + Ingalls, Amazebowls
2 mins - 5 mins 🚶

ALISO

NEWMARK

JAY LUCHS
Vice Chairman
T 310-407-6585
jay.luchs@nmrk.com
CA RE Lic. #01260345
jayluchs.com



BRIAN ABDI
Director
T 310-275-9222
ba@bridgerealestate.com
CA RE Lic. #01879399

ARTS DISTRICT DEMOGRAPHICS



AVERAGE INCOME

\$126,000

MEDIAN INCOME

\$98,700



VISITORS

10 MILLION+
ANNUALLY
\$90,580 MEDIAN INCOME



RESIDENTIAL UNITS

3,630
ARTS DISTRICT CURRENT
+ FUTURE INVENTORY



MEDIAN AGE

34 YEARS



OFFICE SPACE

31 MILLION SF
WITH 500,000 DAYTIME
EMPLOYEES IN DTLA

SINCE 2006, THE
DTLA MARKET HAS
BENEFITED FROM A

20% GROWTH

AMONG MAJOR BRANDED
HOTELS WITH THE
ADDITION OF OVER
1,000 ROOMS

ALISO

NEWMARK

JAY LUCHS
Vice Chairman
T 310-407-6585
jay.luchs@nrmk.com
CA RE Lic. #01260345
jayluchs.com

BRIDGE
REAL ESTATE

BRIAN ABDI
Director
T 310-275-9222
ba@bridgerealestate.com
CA RE Lic. #01879399



ARTS DISTRICT DEVELOPMENT AND SITES



1 THE GAREY BUILDING
 Built in 2016
 320 Units/5 Stories



2 ONE SANTA FE
 (Residential)
 Built in 2014
 438 Units



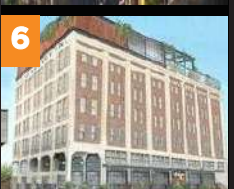
3 THE FORD FACTORY BUILDING
 257,000 SF office Building by Warner Music for the next 13 years. Will open fall of 2018



4 6AM PROJECT
 58-Story towers
 636,000 SF of mixed-use, complex that is proposed to feature live/work residences, creative offices, hotel and retail uses, and public gathering spaces
 *Proposed



5 FOURTH & TRACTION
 (Offices/Retail/Restaurants)
 32,000 SF of creative office space and 10,000 SF of retail spaces



6 SOHO HOUSE
 (Hotel/Bar)
 A Members-Only club that will include 1,500 SF performance space, a 14,000 SF public market, a rooftop pool/observation deck and 36 guest rooms



7 668 ALAMEDA
 (Residential)
 Residential projects will replace an old cold storage building with 475 live-work apartments and 45,500 square feet of commercial space.
 *Proposed



8 670 MESQUIT
 (Residential / Retail)
 Two boutique hotels with about 225 rooms, 800,000 square feet of creative office space, about 250 residential units, shops, and open space along the LA River.
 *Proposed



9 929 EAST SECOND STREET
 (Residential / Offices / Clubs)
 64,000 Square Feet
 *Proposed



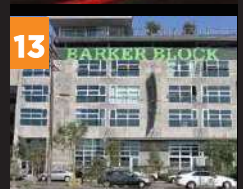
10 ARTS DISTRICT CENTER
 (Mixed Use)
 129 live-work condominiums, a 113-room boutique "art" hotel
 *Proposed



11 LUCKY BRAND HEADQUARTERS
 (Offices)



12 940 E 2ND ST LOFTS
 (Residential)
 40+ Units



13 BARKER BLOCK 530 S. HEWITT ST.
 (Residential)
 320 Units

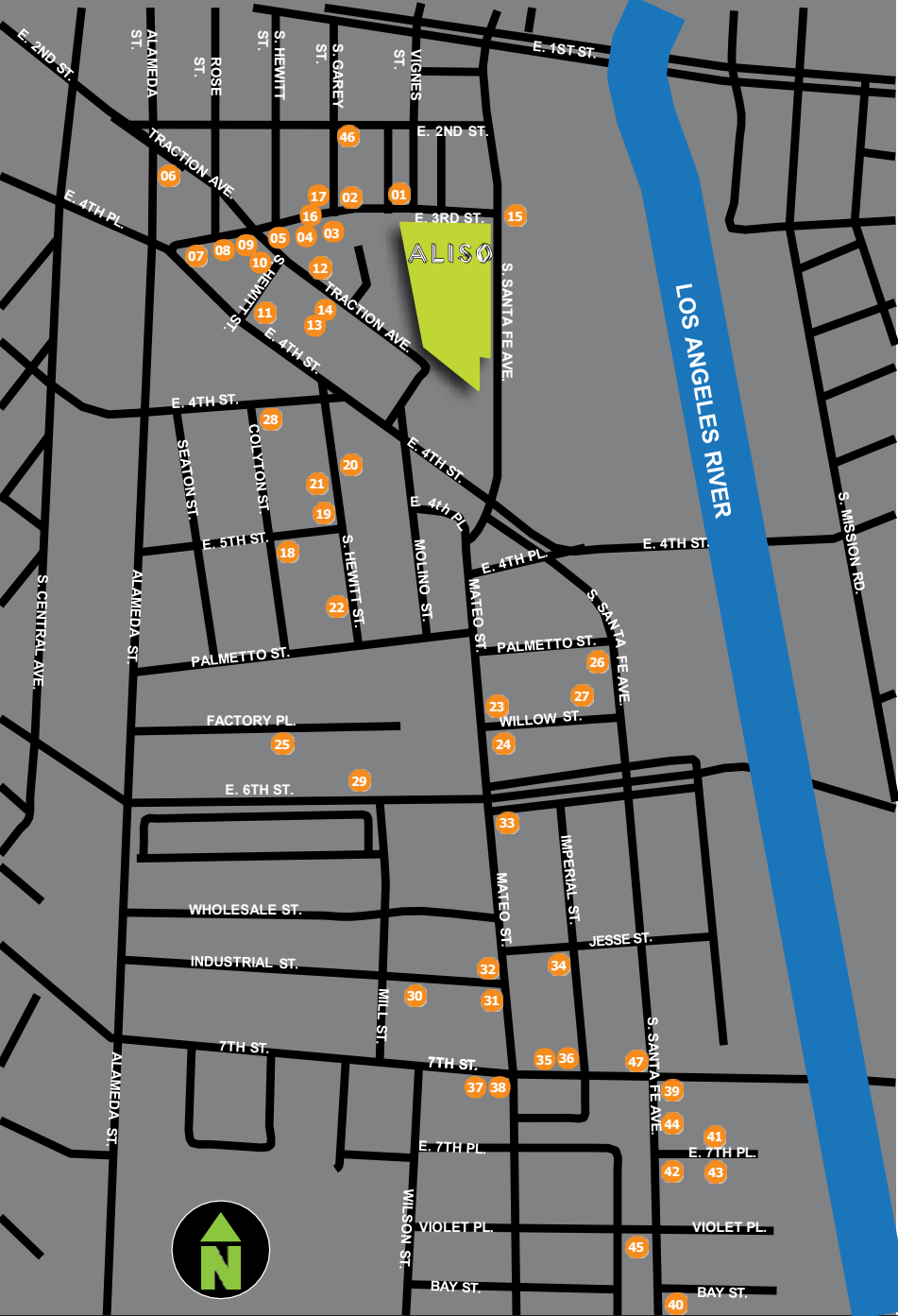
ALISO

NEWMARK

JAY LUCHS
 Vice Chairman
 T 310-407-6585
 jay.luchs@nmrk.com
 CA RE Lic. #01260345
 jayluchs.com

BRIDGE
 REAL ESTATE

BRIAN ABDI
 Director
 T 310-275-9222
 ba@bridgerealestate.com
 CA RE Lic. #01879399



ARTS DISTRICT AREA OVERVIEW

1. EAT DRINK AMERICANO
2. HAUSER AND WIRTH, SHIMMEL GALLERY
3. BLACKTOP COFFEE, ALCHEMY WORKS
4. POCKETO
5. WURSTKÜCHE
6. ANGEL CITY BREWERY
7. EIGHTY TWO
8. UMAMI BURGER, 3.1 PHILLIP LIM
9. LE LABO
10. THE PIE HOLE
11. ART SHARE LA
12. GROUNDWORK COFFEE CO.
13. ARTS DISTRICT BREWING
14. FRITZI
15. GROW THE PRODUCE SHOP, EDIBOL, CAFÉ GRATITUDE, BULLETPROOF COFFEE, HENNESSEY + INGALLS
16. SALT & STRAW
17. SHINOLA
18. THE CHAIRMAN
19. URTH CAFE
20. RESIDENT
21. TROJAN CROSSFIT
22. LOS ANGELES
23. CLEANTECH INCUBATOR, ZINC CAFE, BAR MATEO
24. BLUE BOTTLE COFFEE
25. FACTORY KITCHEN
26. VILLAINS TAVERN
27. WILLOW STUDIOS
28. A+D MUSEUM
29. OFFICINE BRERA
30. DAILY DOSE CAFE, POUR HAUS WINE BAR
31. CHURCH & STATE
32. LITTLE BEAR
33. THE SPRINGS LA
34. URBAN RADISH
35. TONY'S SALOON
36. PIZZANISTA!
37. EVERSON ROYCE BAR
38. SILVERLAKE WINE ARTS DISTRICT
39. BREAD LOUNGE
40. PETTY CASH TAQUERIA
41. BESTIA
42. STUMPTOWN COFFEE ROASTERS
43. HD BUTTERCUP
44. SOHO HOUSE
45. AMERICAN TEA ROOM
46. THE GAREY BUILDING
47. WARNER MUSIC GROUP

ALISO

NEWMARK

JAY LUCHS
 Vice Chairman
 T 310-407-6585
jay.luchs@nmrk.com
 CA RE Lic. #01260345
jayluchs.com

BRIDGE
 REAL ESTATE

BRIAN ABDI
 Director
 T 310-275-9222
ba@bridgerealestate.com
 CA RE Lic. #01879399



The information contained herein has been obtained from sources deemed reliable but has not been verified and no guarantee, warranty or representation, either express or implied, is made with respect to such information. Terms of sale or lease and availability are subject to change or withdrawal without notice.

Corporate RE Lic #01355491

ALISO

NEWMARK

Corporate License #01355491

JAY LUCHS

Vice Chairman

T 310-407-6585

jay.luchs@nmrk.com

CA RE Lic. #01260345

jayluchs.com

BR
BRIDGE
REAL ESTATE

BRIAN ABDI

Director

T 310-275-9222

ba@bridgerealestate.com

CA RE Lic. #01879399