



LISTING DATA

TOTAL BLDG. SF:	3,500± square feet
CLEAR HEIGHT:	10'±
INDICATED POWER:	100 Amp, 120/208 Volt
TOTAL GL DOORS:	One (1) 8' x 8'
ZONING:	C-G General Commercial, City of Stockton

COMMENTS:

- Two (2) open bullpen/showroom areas
- Small warehouse area
- Two (2) restrooms
- New mini-split HVAC in bullpen/showroom areas
- Located at the corner of South El Dorado Street and East 4th Street

Economic Data:

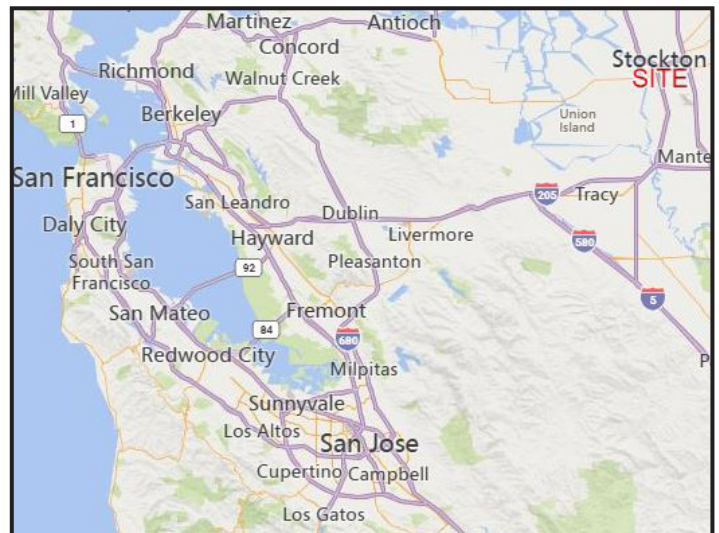
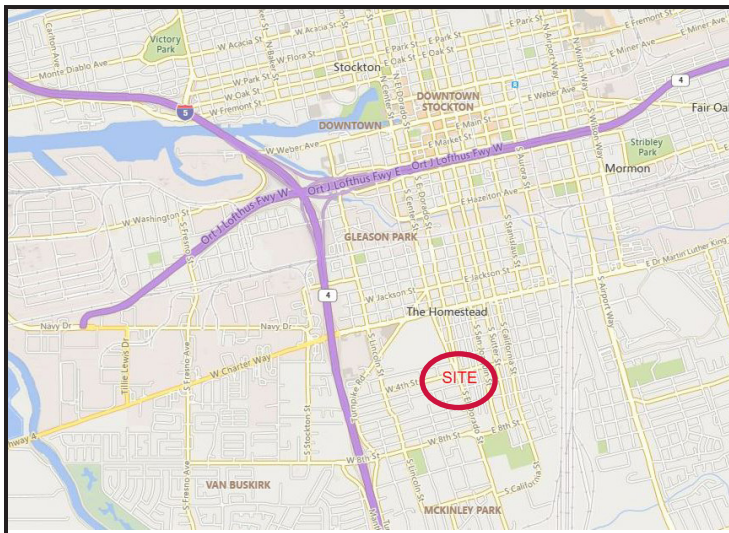
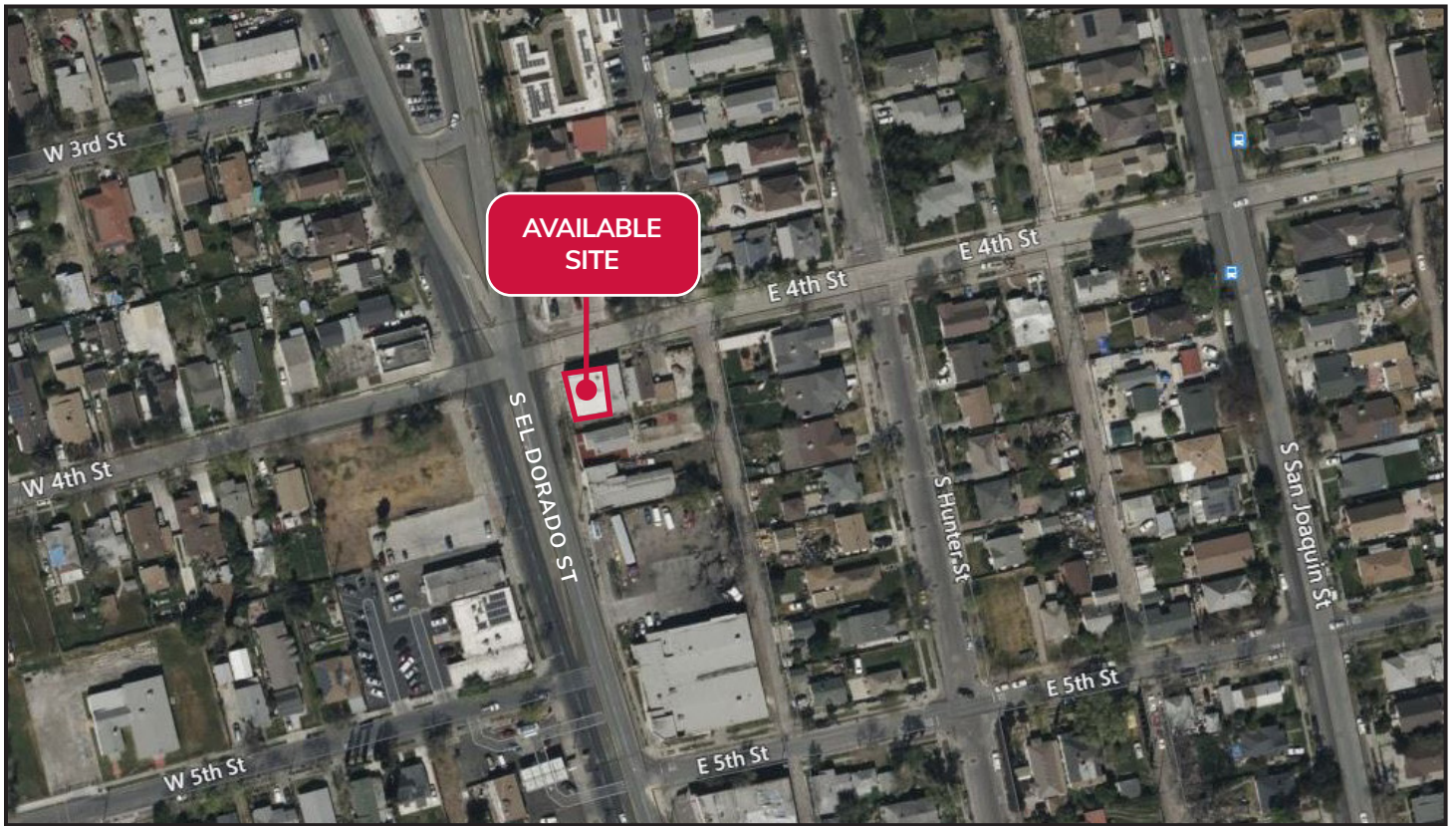
Lease Rate: \$.90 PSF, Gross

Contact: Darren McFadden

BRE # 01276439
dmcfadden@lee-associates.com
D 209.983.6821
C 209.598.1180

INDUSTRIAL WAREHOUSE | FOR LEASE

1810 & 1812 S. EL DORADO STREET | STOCKTON, CA



Contact: Darren McFadden
BRE # 01276439
dmcfadden@lee-associates.com
D 209.983.6821
C 209.598.1180

All information furnished regarding property for sale, rental or financing is from sources deemed reliable, but no warranty or representation is made to the accuracy thereof and same is submitted to errors, omissions, change of price, rental or other conditions prior to sale, lease or financing or withdrawal without notice. No liability of any kind is to be imposed on the broker herein.