



# 9920 FRANKLIN SQUARE DR.

BALTIMORE, MD 21236

# FOR LEASE



## RENTAL RATE

\$19.50 PSF

FULL SERVICE NET OF JANITORIAL

## AVAILABLE SPACES

Ste 110: 2,542 RSF

Ste 115: 1,936 - 4,978 RSF

Ste 145: 2,249 RSF

2nd Floor: 1,900-19,618 RSF

## PROPERTY HIGHLIGHTS

- I-95 Frontage/Signage Available
- Minutes to I-95, I-695, Rt.43, Rt. 40 & Rt. 7
- Surrounded By Major Medical & 2M SF of Walkable Retail
- Expansive Window Line Throughout
- High End Existing Finishes/Builds For Turnkey Solutions

## LEASING CONTACT

Adam Meissner  
 DBM Real Estate Group LLC.  
 (o) 410-580-2811  
 (c) 410-688-6216  
 adam@dbmrealty.com

### DBM REAL ESTATE GROUP LLC.

40 York Rd. Suite 300  
 Towson, Maryland 21204  
 410-580-2811

Adam Meissner  
 Principal  
 adam@dbmrealty.com  
 c. 410-688-6216

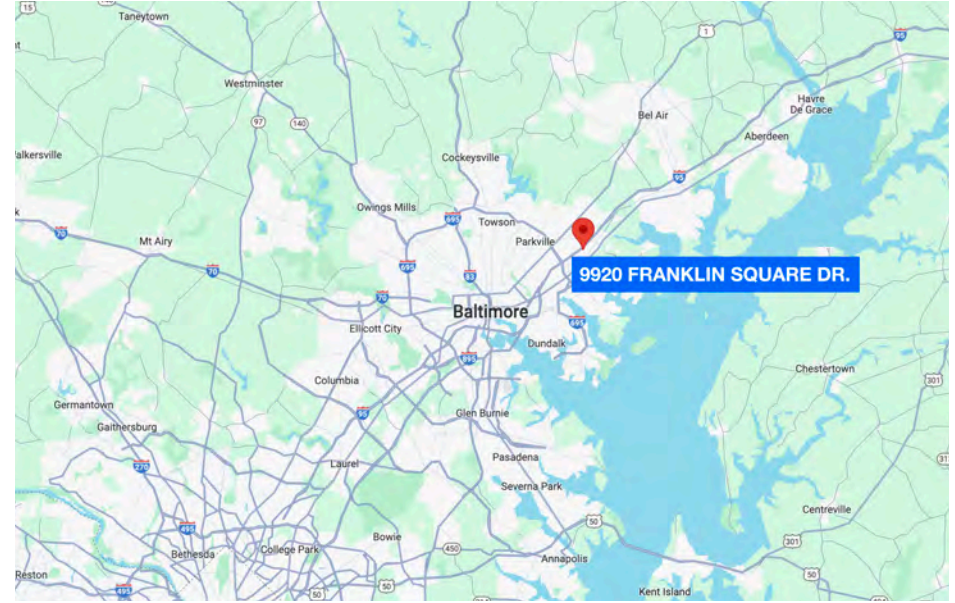


www.dbmrealty.com



# OVERVIEW

9920 FRANKLIN SQUARE DR. | BALTIMORE, MD 21236



Franklin Ridge is a high-image office/medical campus in the heart of the White Marsh Business Community. Strategically located just off I-95 & Campbell Blvd; the site offers ease of access for employees, customers & patients alike. Walkable to over 2 million square feet of retail amenities, and among the growing residential & senior housing density within the immediate area; Franklin Ridge offers a top location for businesses & medical practitioners to establish a presence in the White Marsh market.

Minutes to I-95, I-695, Rt.43, Rt 40 & Rt 7; the location is centrally located. The building sits at the epicenter of an established medical destination for the surrounding communities and is within miles of MedStar Franklin Square Hospital (a 350-bed hospital and the third largest in Maryland), Kaiser Permanente's White Marsh Medical Center, & Johns Hopkins Health and Surgery Center.



# AERIAL VIEW

9920 FRANKLIN SQUARE DR. | BALTIMORE, MD 21236





# INTERIOR PHOTOS

9920 FRANKLIN SQUARE DR. | BALTIMORE, MD 21236



**DBM REAL ESTATE GROUP LLC.**  
40 York Rd. Suite 300  
Towson, Maryland 21204  
410-580-2811

Adam Meissner  
*Principal*  
adam@dbmrealty.com  
c. 410-688-6216



[www.dbmrealty.com](http://www.dbmrealty.com)



# INTERIOR PHOTOS

9920 FRANKLIN SQUARE DR. | BALTIMORE, MD 21236



**DBM REAL ESTATE GROUP LLC.**  
40 York Rd. Suite 300  
Towson, Maryland 21204  
410-580-2811

Adam Meissner  
*Principal*  
adam@dbmrealty.com  
c. 410-688-6216





# AS-BUILT FLOOR PLANS

9920 FRANKLIN SQUARE DR. | BALTIMORE, MD 21236

**Ste 145**  
2,249 RSF

**Ste 115**  
1,936 - 4,978 RSF

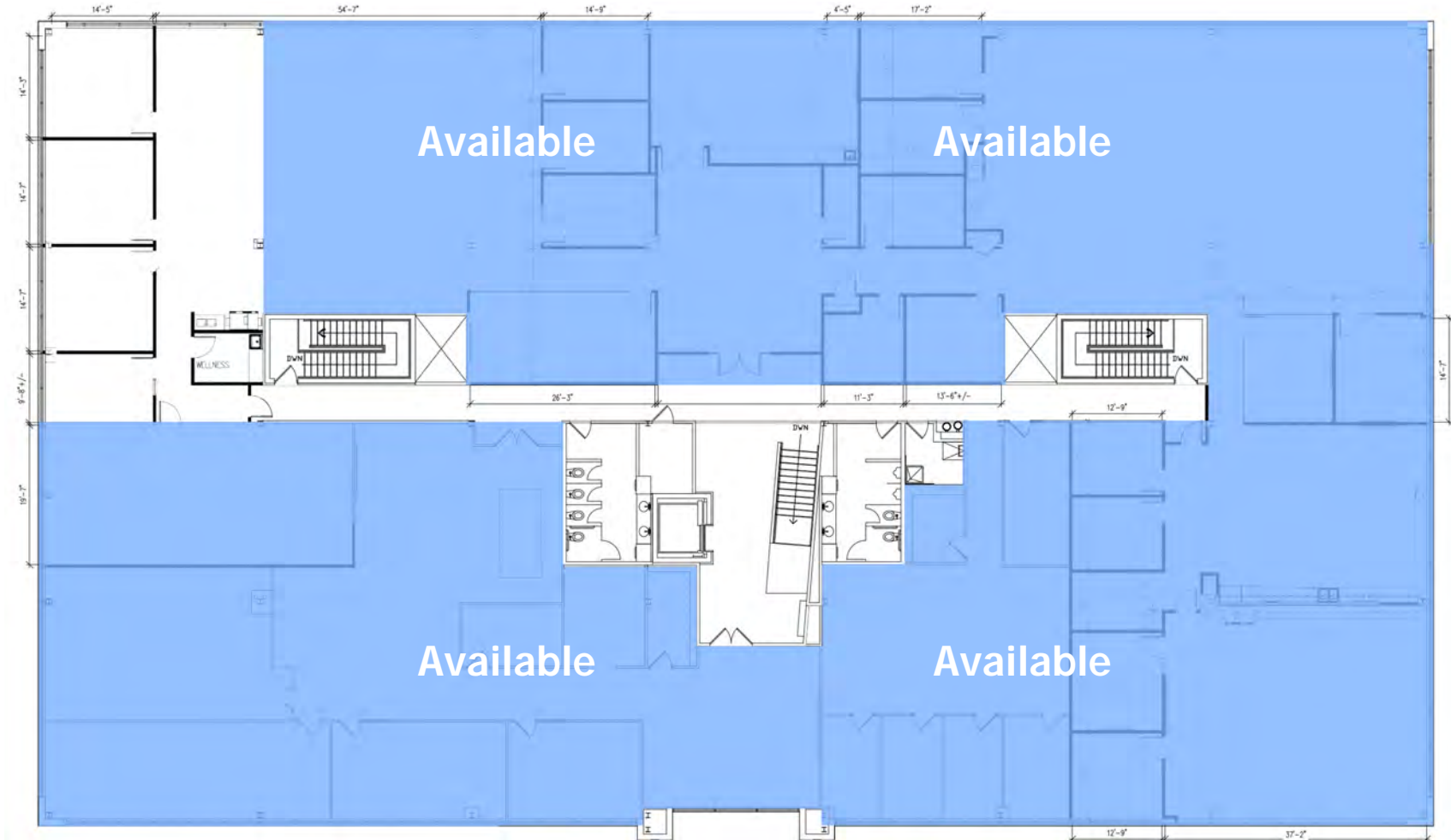




# AS-BUILT FLOOR PLANS

9920 FRANKLIN SQUARE DR. | BALTIMORE, MD 21236

## Second Floor 1,900 - 19,618 RSF





# EXAMPLES FOR DIVISIBLE LAYOUTS

9920 FRANKLIN SQUARE DR. | BALTIMORE, MD 21236







# EXAMPLES FOR DIVISIBLE LAYOUTS

9920 FRANKLIN SQUARE DR. | BALTIMORE, MD 21236

