

NORTHWAY PARK II

4845 Homestead Rd., Houston, TX 77028



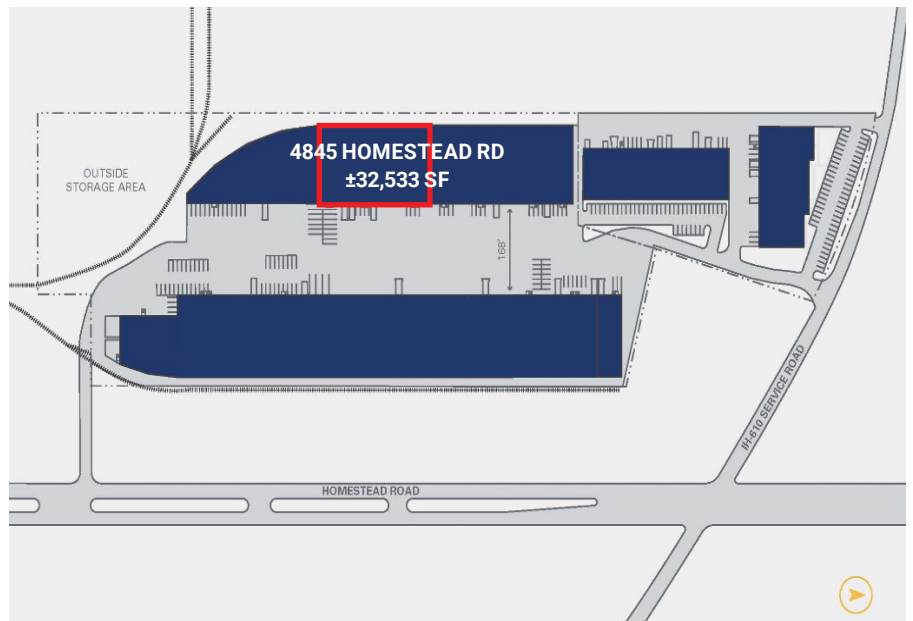
NORTHWAY PARK II | 4845 Homestead Rd., Houston, TX 77028

NORTHWAY PARK II



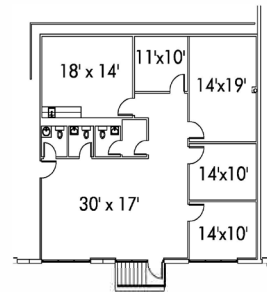
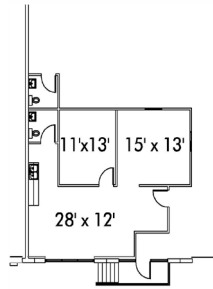
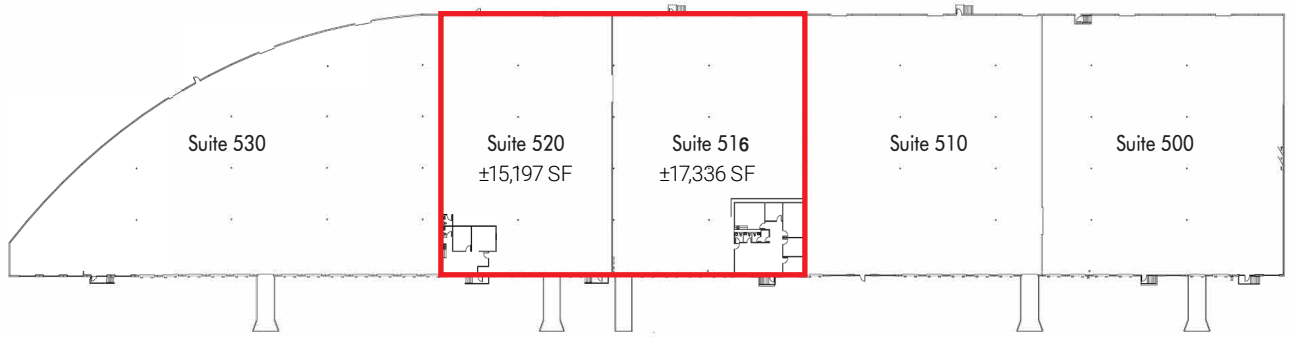
HIGHLIGHTS

- Total SF: ±32,533 SF
- Office: ±2,477 SF
- (7) Dock-High Doors
- (2) Drive Ins
- Column Spacing 60'x28'
- 24' Clear Height
- Sprinklered
- White Box Walls
- LED Lights



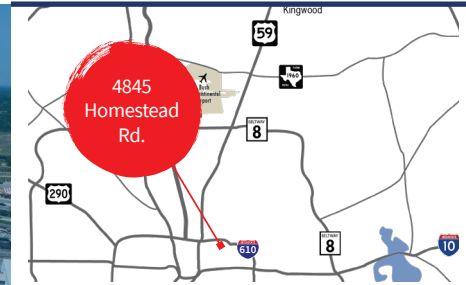
NORTHWAY PARK II

4845 Homestead Rd., Houston, TX 77028



NORTHWAY PARK II | 4845 Homestead Rd., Houston, TX 77028

NORTHWAY PARK II



Richard Quarles, SIOR
713.888.4019
richard.quarles@jll.com

Joseph Berwick
713.425.5842
joseph.berwick@jll.com

Eliza Klein
713.425.1816
eliza.klein@jll.com



Danielle Radtke
630.586.8146
dradtke@centerpoint.com

centerpoint.com

Key Distances

- 610** - Immediate access
- I-10** - 3 Miles
- Downtown** - 7 Miles
- Port of Houston** - 7 Miles
- Hobby Airport** - 13 Miles
- IAH** - 18.5 Miles
- Barbours Cut** - 25 Miles
- Bayport Terminal** - 30 Miles