

# 736 Allerton Avenue, Allerton, Bronx, NY

## Property Features

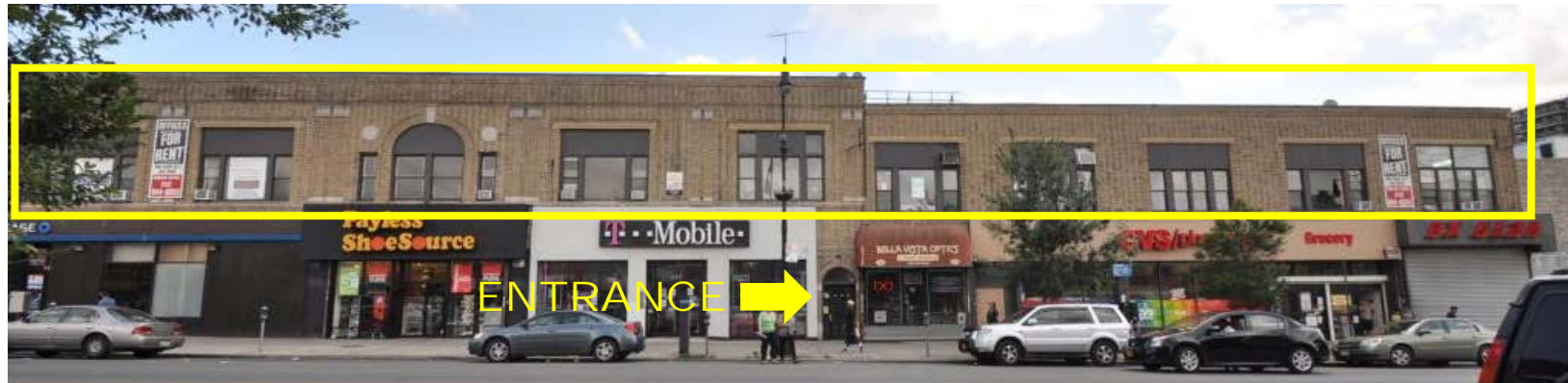
- ❖ Immediate availability
- ❖ Divisions available
- ❖ Flexible lease terms
- ❖ Build-to-suit
- ❖ Perimeter Windows
- ❖ Newly installed ADA passenger elevator

## Location

Prime Allerton location  
Easy access to Bronx  
River Parkway with  
connection to Cross Bronx  
Expressway/I-95

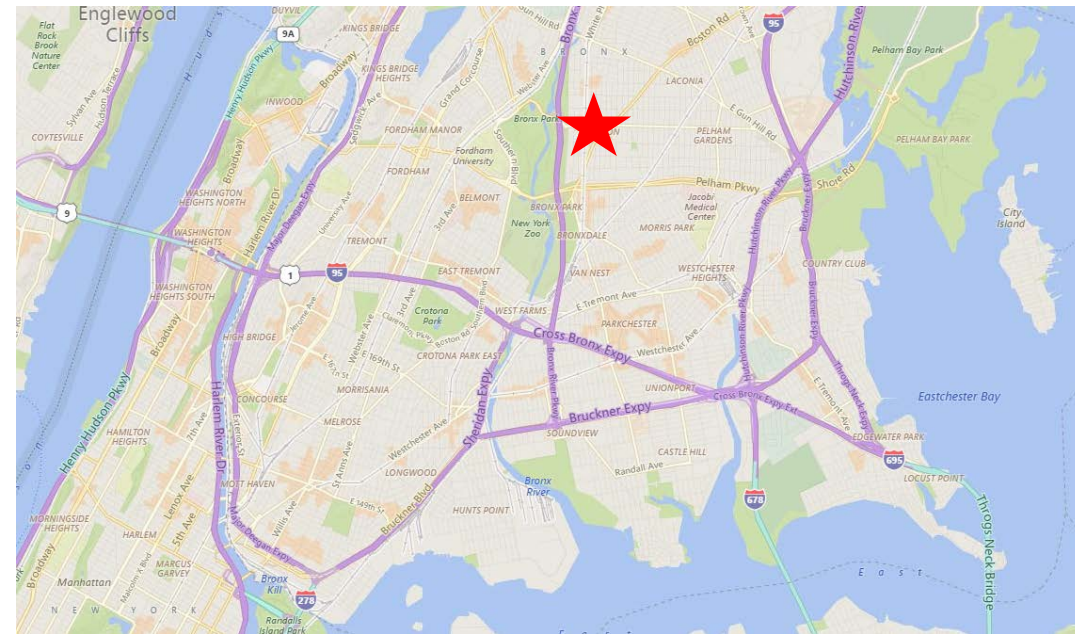
## Transportation

Close to 2 5 Allerton  
Avenue subway station  
and BX26 bus at door



**15,000 Sq. Ft.**  
**2<sup>nd</sup> Floor**  
**Prime Office**  
**Space**  
**Available**

*~ Ideal for General  
Office, Non-Profit,  
Medical, Educational,  
Legal Use ~*



**CALL FOR PRICING**

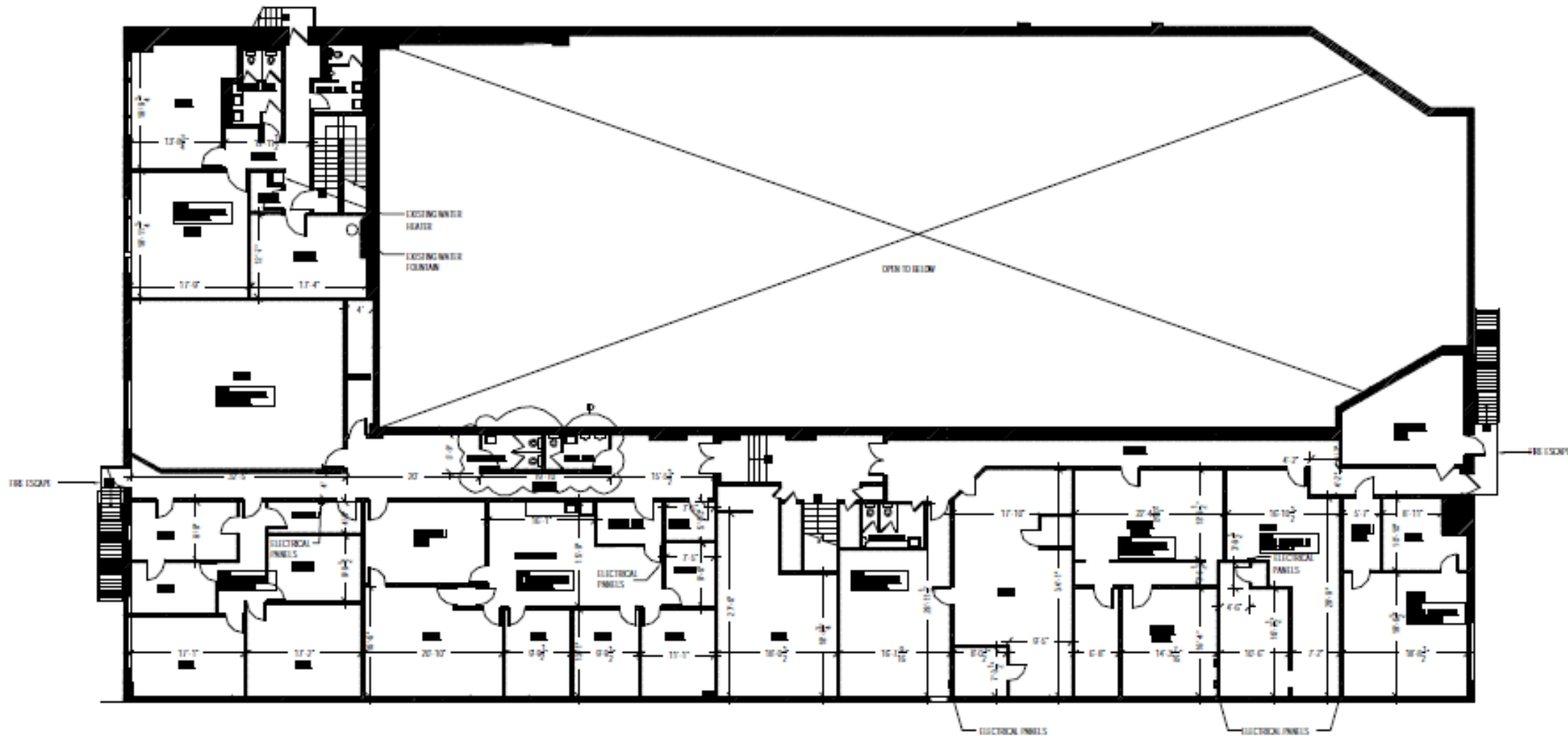
*For Further Information and Inspection, Please Contact Exclusive Agent:*

Melissa Grasso • (718) 371-0127 • mgrasso@s-z.com

Kaufman Astoria Studios 35-11 35<sup>th</sup> Avenue, Long Island City, NY 11106 • (718) 392-5959 • Fax (718) 937-6546

[www.s-z.com](http://www.s-z.com)

# 736 Allerton Avenue, Allerton, Bronx, NY



*For Further Information and Inspection, Please Contact Exclusive Agent:*

**Melissa Grasso • (718) 371-0127 • [mgrasso@s-z.com](mailto:mgrasso@s-z.com)**

**Kaufman Astoria Studios 35-11 35<sup>th</sup> Avenue, Long Island City, NY 11106 • (718) 392-5959 • Fax (718) 937-6546**

**[www.s-z.com](http://www.s-z.com)**