

FOR LEASE

1300 ETHAN WAY & 2025, 2035, 2045 HURLEY WAY

SACRAMENTO, CA



**5% Commission to
Procuring Agent**
Excludes existing Tenants & Lease Renewals



1300 Ethan Way



2025, 2035, & 2045 Hurley Way

NEWMARK

RICH ELLSWORTH

916-569-2343

rich.ellsworth@nmrk.com

CA RE License #00873637

HIGHLIGHTS



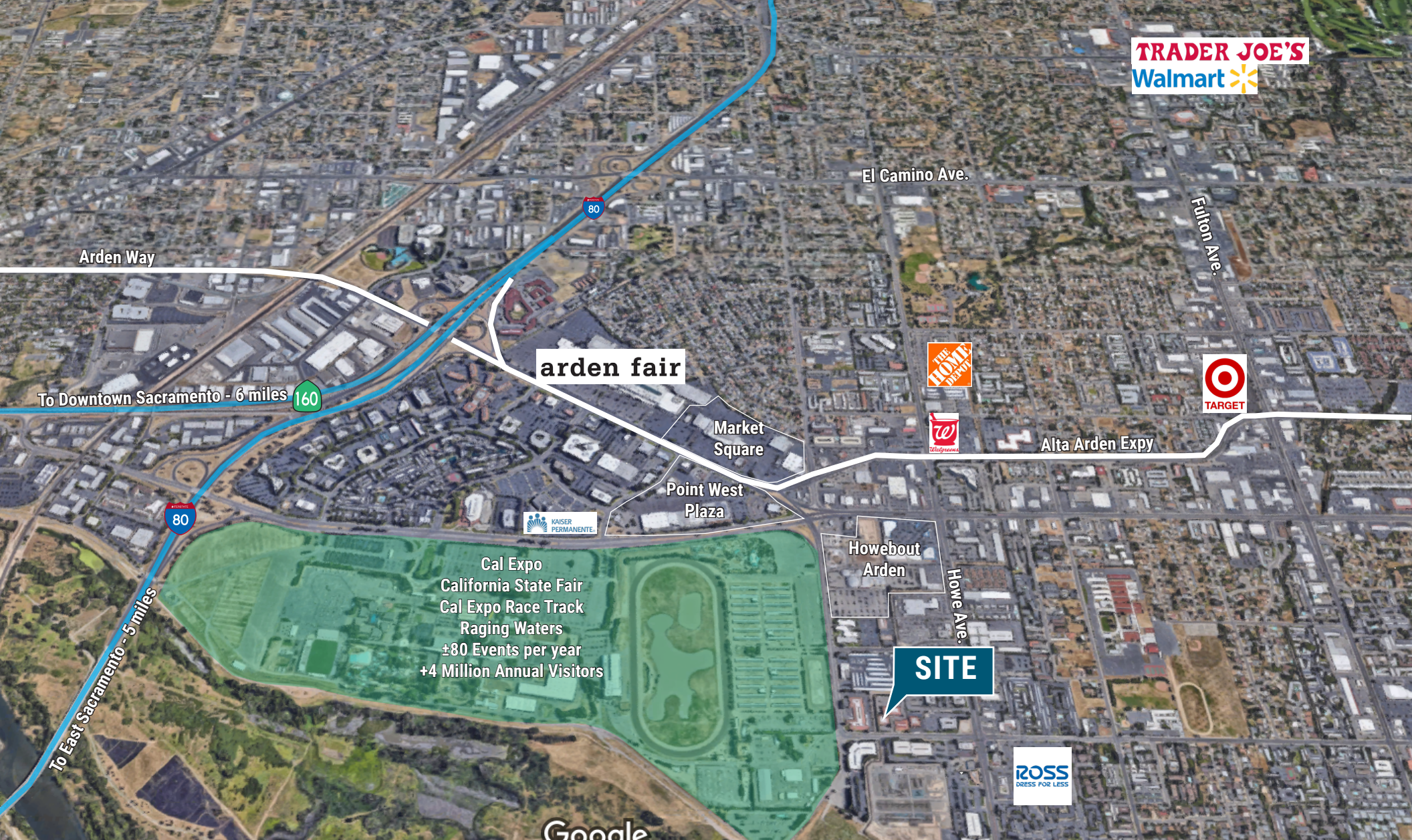
LEASE RATE: \$1.75/RSF, FULL SERVICE

Attractive one and two story buildings with beautifully renovated common areas, landscaping and signage

Competitive lease rates and tenant improvements available

Excellent location, close to Capital City Freeway and Highway 50

Less than one mile to Arden Fair Mall, Doubletree Hotel, banking, restaurants and other retail support services



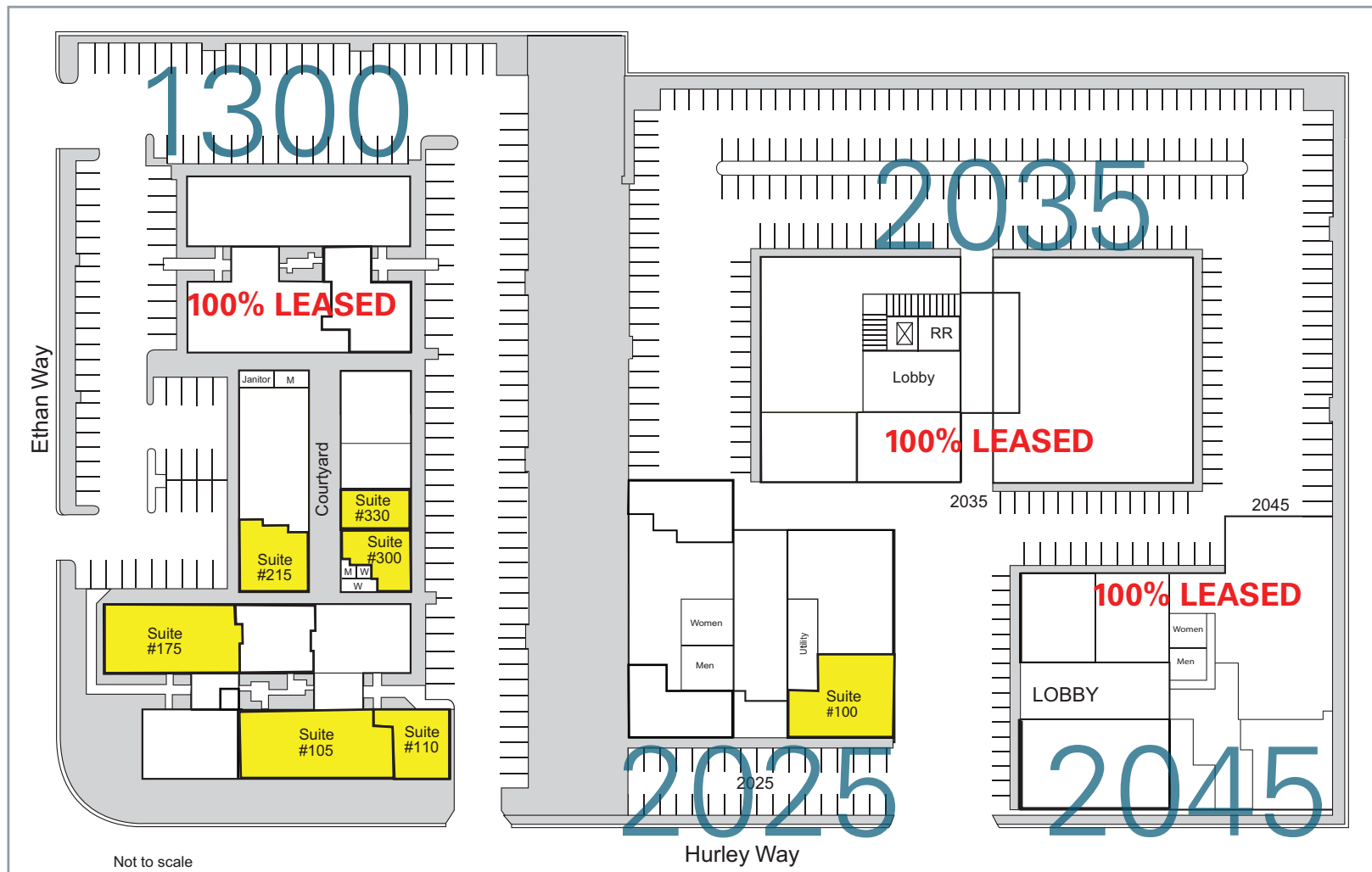
Arden Fair Mall is over 400,000 SF and offers shopping convenience to Macy's, Apple, Michael Kors and more

Point West Plaza offers over 120,000 SF of retail convenience such as Hobby Lobby, Kohl's, Davids Bridal and more

Market Square is a +200,000 SF retail destination and houses such retail giants as United Artists, Barnes and Noble, Ulta and more

HoweboutArden houses Century Theatres, Nordstrom Rack, Homegoods, The Container Store and more

AVAILABLE SPACES



1300 ETHAN WAY

Suite 105: $\pm 3,531$ RSF
 Suite 110: $\pm 1,723$ RSF
 Suites 105 & 110: $\pm 5,254$ RSF
 Suite 175: $\pm 4,625$ RSF
 Suite 215: $\pm 2,128$ RSF
 Suite 300: $\pm 1,229$ RSF (Avail 1/1/26)
 Suite 330: $\pm 1,290$ RSF

2025 HURLEY WAY

Suite 100: $\pm 1,577$ RSF
 (Former Law Office with building signage)

2035 HURLEY WAY

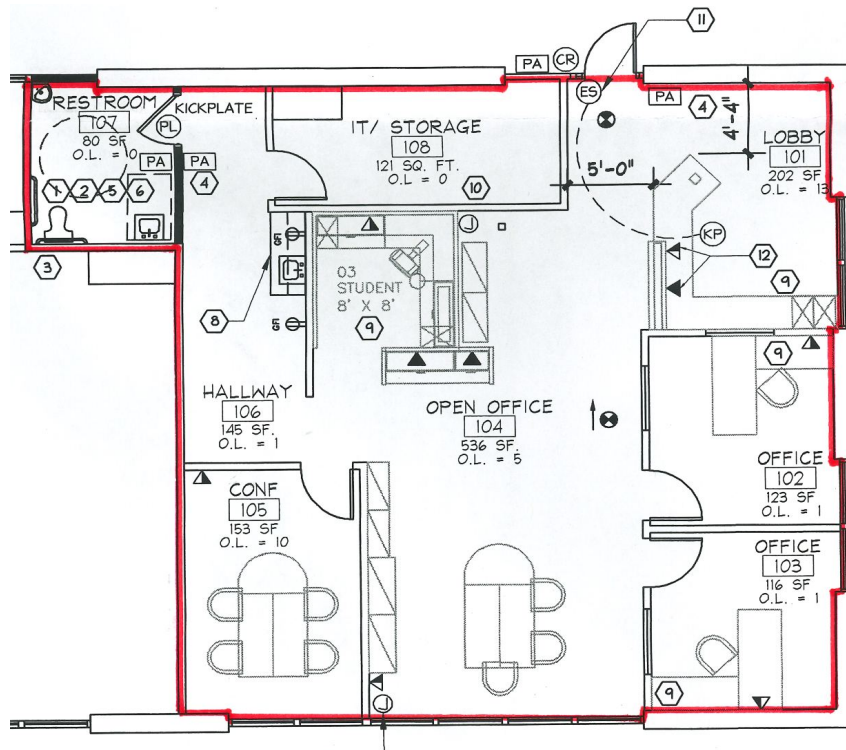
100% LEASED

2045 HURLEY WAY

100% LEASED

1300

ETHAN WAY



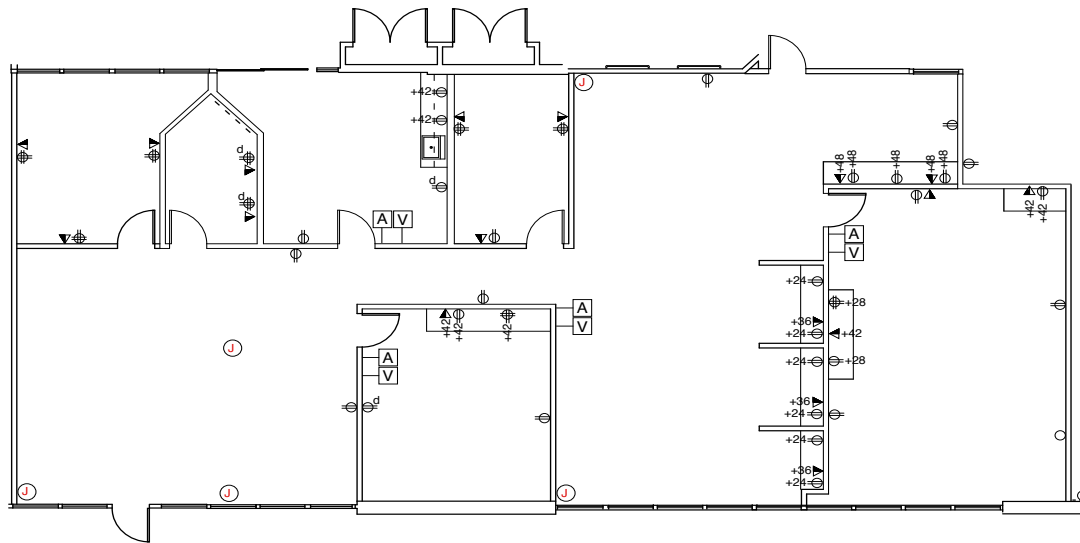
Suite 110: ±1,723 RSF



FLOOR PLAN

1300

ETHAN WAY

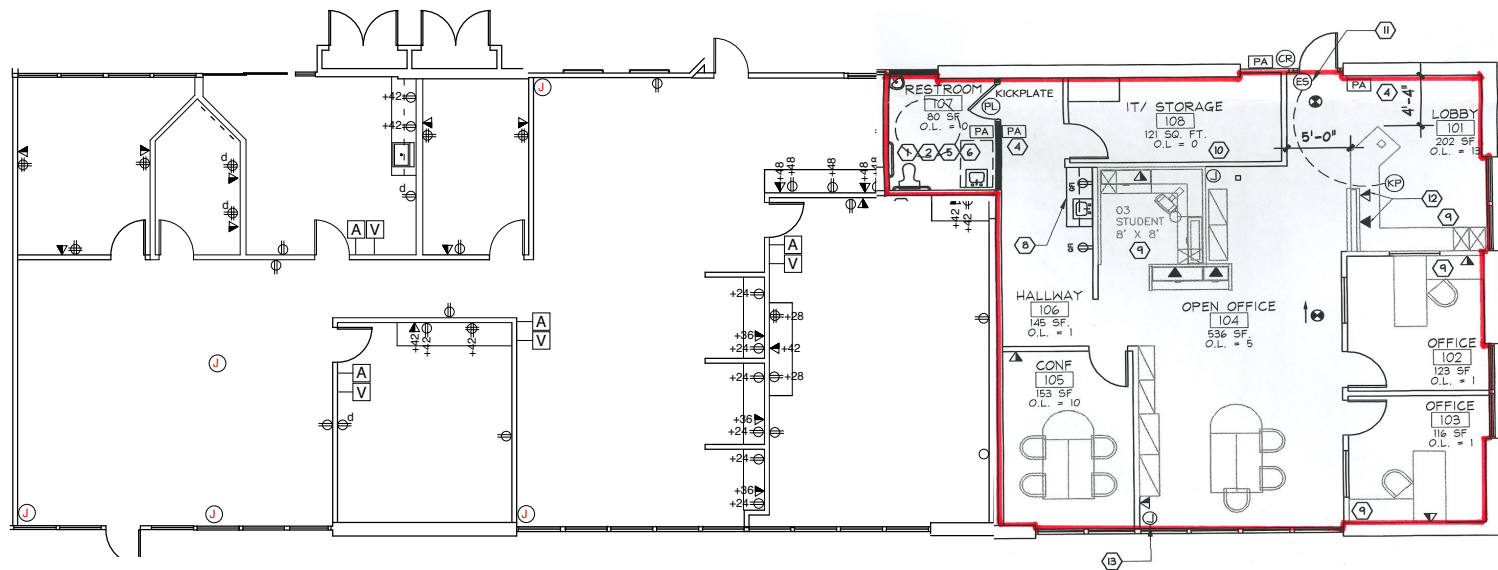


Suite 105: ±3,531 RSF



1300

ETHAN WAY

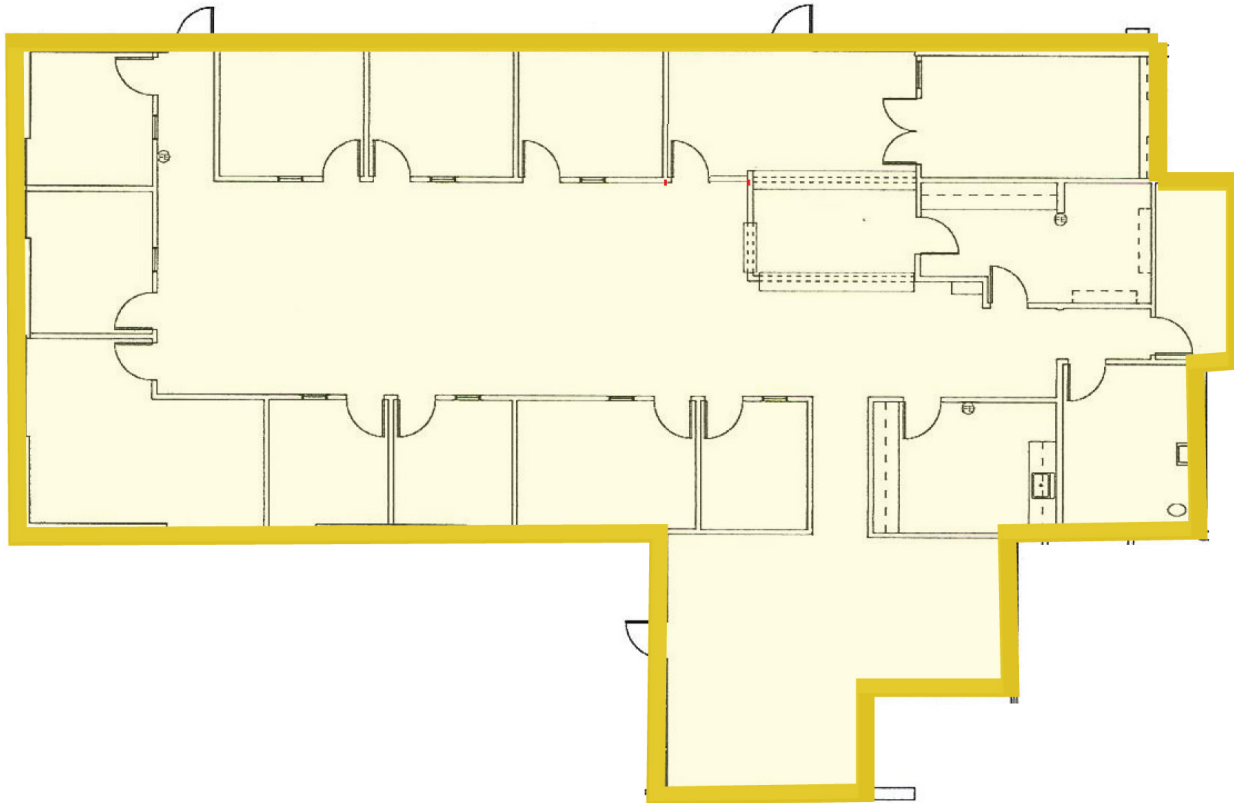


Suites 105 & 110: ±5,254 RSF



1300

ETHAN WAY



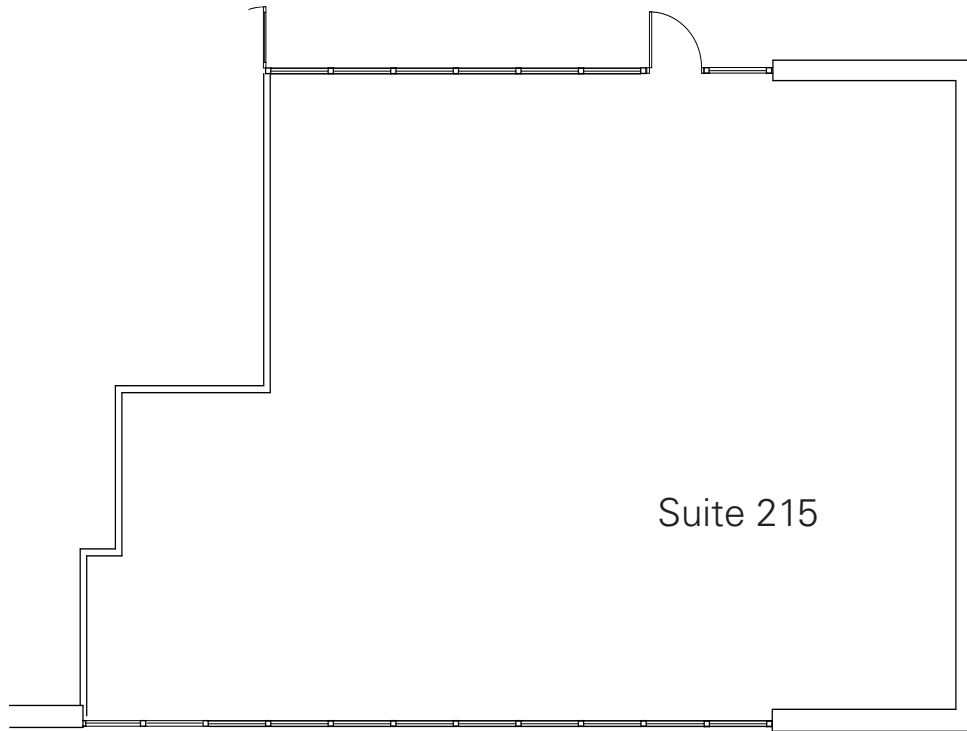
Suite 175: ±4,625 RSF



FLOOR PLAN

1300

ETHAN WAY



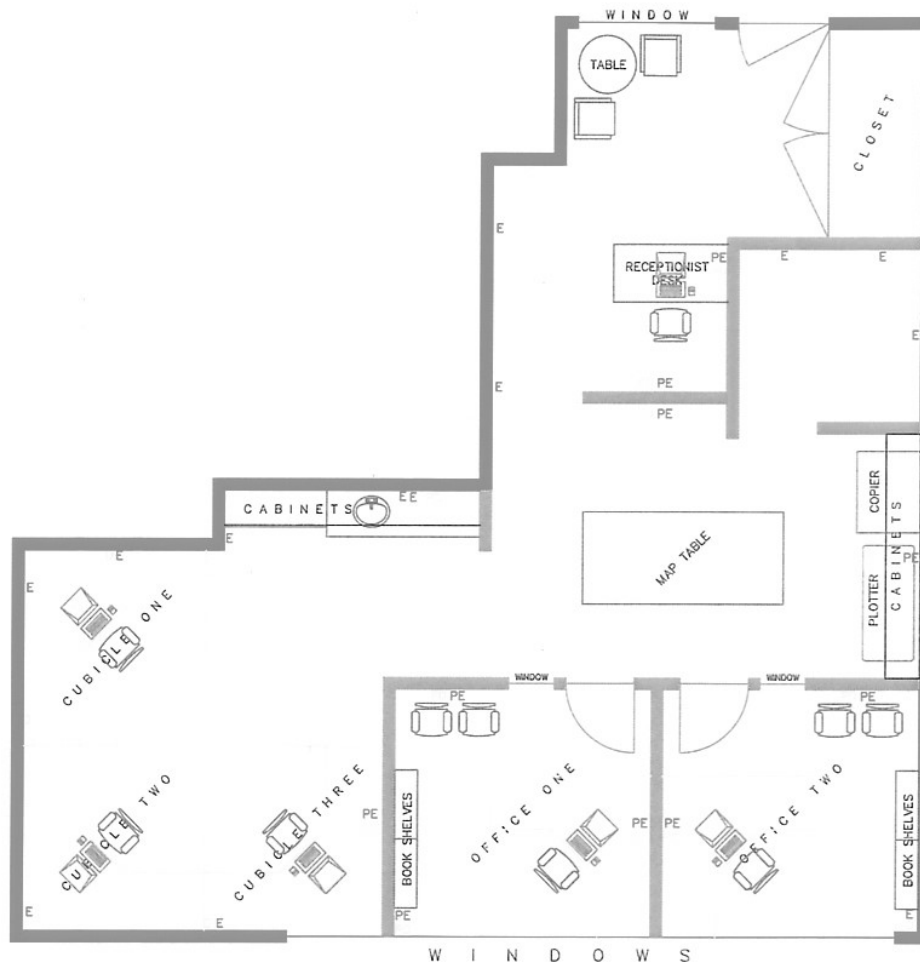
Suite 215: $\pm 2,128$ RSF



FLOOR PLAN

1300

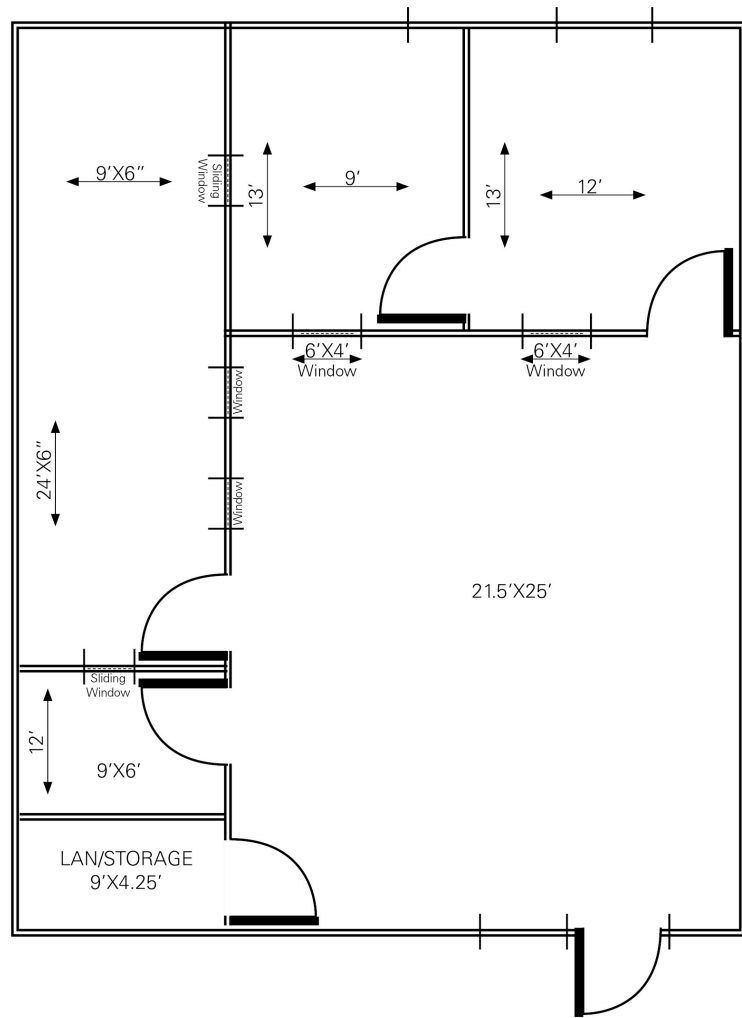
ETHAN WAY



Suite 300: ±1,229 RSF



FLOOR PLAN

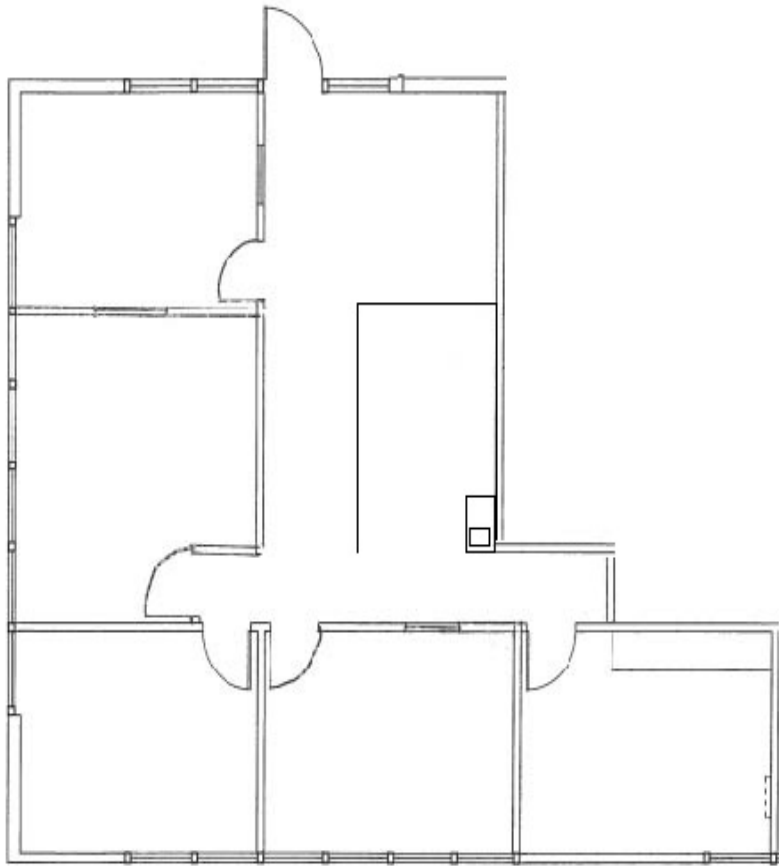


1300

ETHAN WAY

Suite 330: ±1,290 RSF





2025

HURLEY WAY

Suite 100: ±1,577 RSF

(Former Law Office)



PHOTO GALLERY



1300 ETHAN WAY & 2025, 2035, 2045 HURLEY WAY

SACRAMENTO, CA



The distributor of this communication is performing acts for which a real estate license is required. The information contained herein has been obtained from sources deemed reliable but has not been verified and no guarantee, warranty or representation, either express or implied, is made with respect to such information. Terms of sale or lease and availability are subject to change or withdrawal without notice.

08-1327 • 07/25

NEWMARK

RICH ELLSWORTH

916-569-2343

rich.ellsworth@nrmk.com

CA RE License #00873637