

# TOK

COMMERCIAL

# EDISON CENTER

RETAIL/OFFICE SPACE FOR LEASE | 588-594 SE BISHOP BLVD | PULLMAN, WA 99163



## DON CRAWFORD

208.660.1207

don@tokcommercial.com

## KIM MILLET

509.606.5087

kim@tokcommercial.com

Ideal for professional office or retail users.

Located near major national retailers with excellent visibility and access.

Suite B includes three offices, conference room, and kitchenette.

Suites E & F have been recently remodeled as a tap-house.

Ample shared on site parking.

Suite 104 has versatile Office/Retail Space.

SPACE	SIZE	RATE
Suite B	±1,500 SF	\$20.00/SF, NNN
Suite E & F	±2,000 SF	\$20.00/SF, NNN
Suite 104	±1,040 SF	\$21.75/SF, NNN

### CONTACT AGENT FOR SHOWING INSTRUCTIONS

BLDG TYPE	Retail/Office	ZONING	C-8
PARKING	Ample	AVAILABLE	Immediately
CTR. LOT SIZE	1.15 Acres	LEASE TERM	Negotiable
CTR. BLDG SIZE	13,908 SF	ANNUAL NNN EXP.	\$6.27/SF

CONTACT

HIGHLIGHTS

DETAILS

UPDATED: 10.20.2025

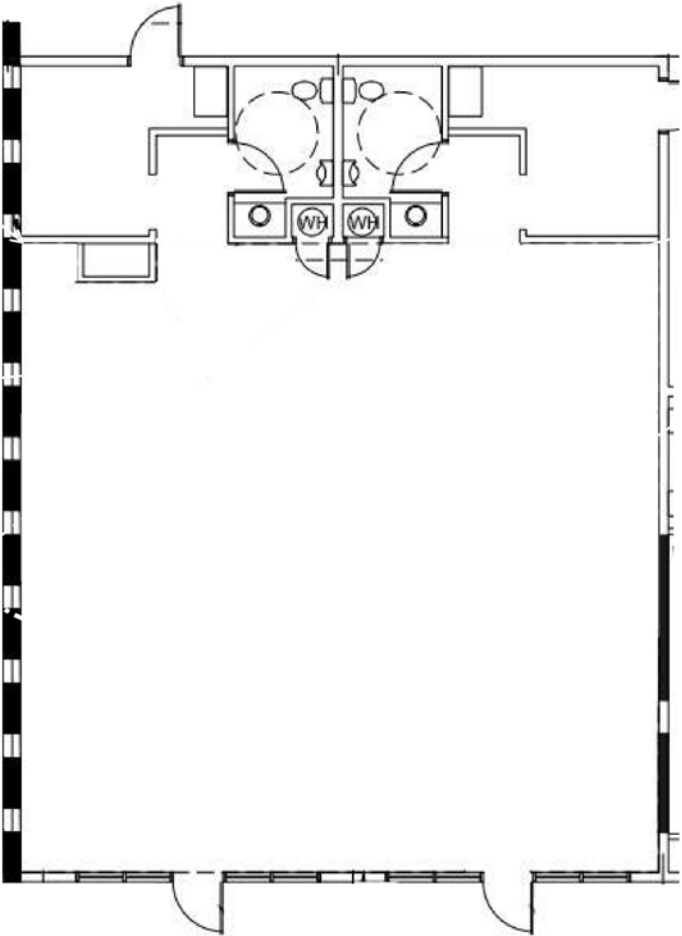
THIS PROPERTY IS EXCLUSIVELY MARKETING BY TOK INLAND NORTHWEST LLC DBA TOK COMMERCIAL

This information was obtained from sources believed reliable but cannot be guaranteed. Any opinions or estimates are used for example only.

TOKCOMMERCIAL.COM



# FLOOR PLAN | SUITE E&F







## SUITE B



**UPDATED: 10.20.2025**

THIS PROPERTY IS EXCLUSIVELY MARKETING BY TOK INLAND NORTHWEST LLC DBA TOK COMMERCIAL

This information was obtained from sources believed reliable but cannot be guaranteed. Any opinions or estimates are used for example only.

**TOK**COMMERCIAL.COM



## SUITE E & F



UPDATED: 10.20.2025

THIS PROPERTY IS EXCLUSIVELY MARKETING BY TOK INLAND NORTHWEST LLC DBA TOK COMMERCIAL

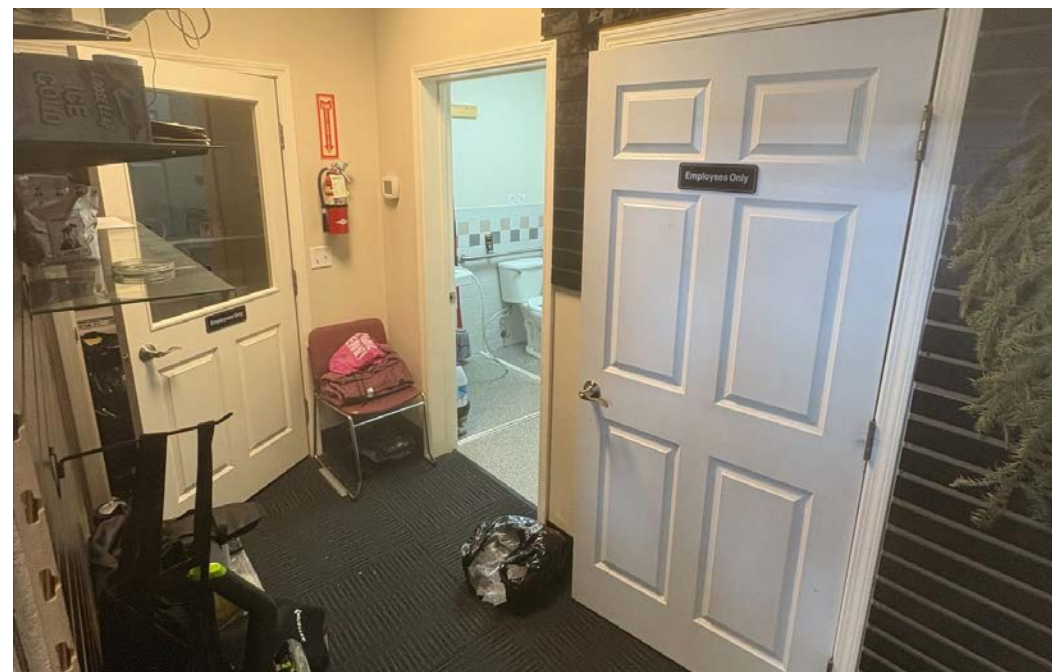
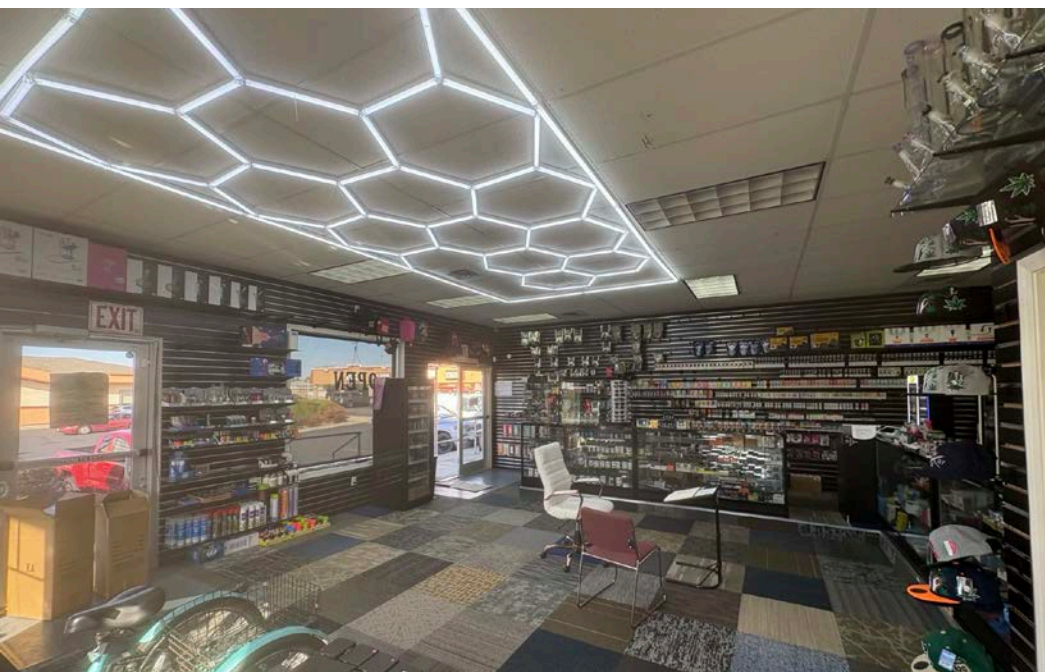
This information was obtained from sources believed reliable but cannot be guaranteed. Any opinions or estimates are used for example only.

**TOK**COMMERCIAL.COM





## SUITE 104



UPDATED: 10.20.2025

THIS PROPERTY IS EXCLUSIVELY MARKETING BY TOK INLAND NORTHWEST LLC DBA TOK COMMERCIAL

This information was obtained from sources believed reliable but cannot be guaranteed. Any opinions or estimates are used for example only.

**TOK**COMMERCIAL.COM



# SITE MAP

## HIGH TRAFFIC RETAIL LOCATION



UPDATED: 10.20.2025

THIS PROPERTY IS EXCLUSIVELY MARKETING BY TOK INLAND NORTHWEST LLC DBA TOK COMMERCIAL

This information was obtained from sources believed reliable but cannot be guaranteed. Any opinions or estimates are used for example only.



# SITE MAP

## HIGH TRAFFIC RETAIL LOCATION



UPDATED: 10.20.2025

THIS PROPERTY IS EXCLUSIVELY MARKETING BY TOK INLAND NORTHWEST LLC DBA TOK COMMERCIAL

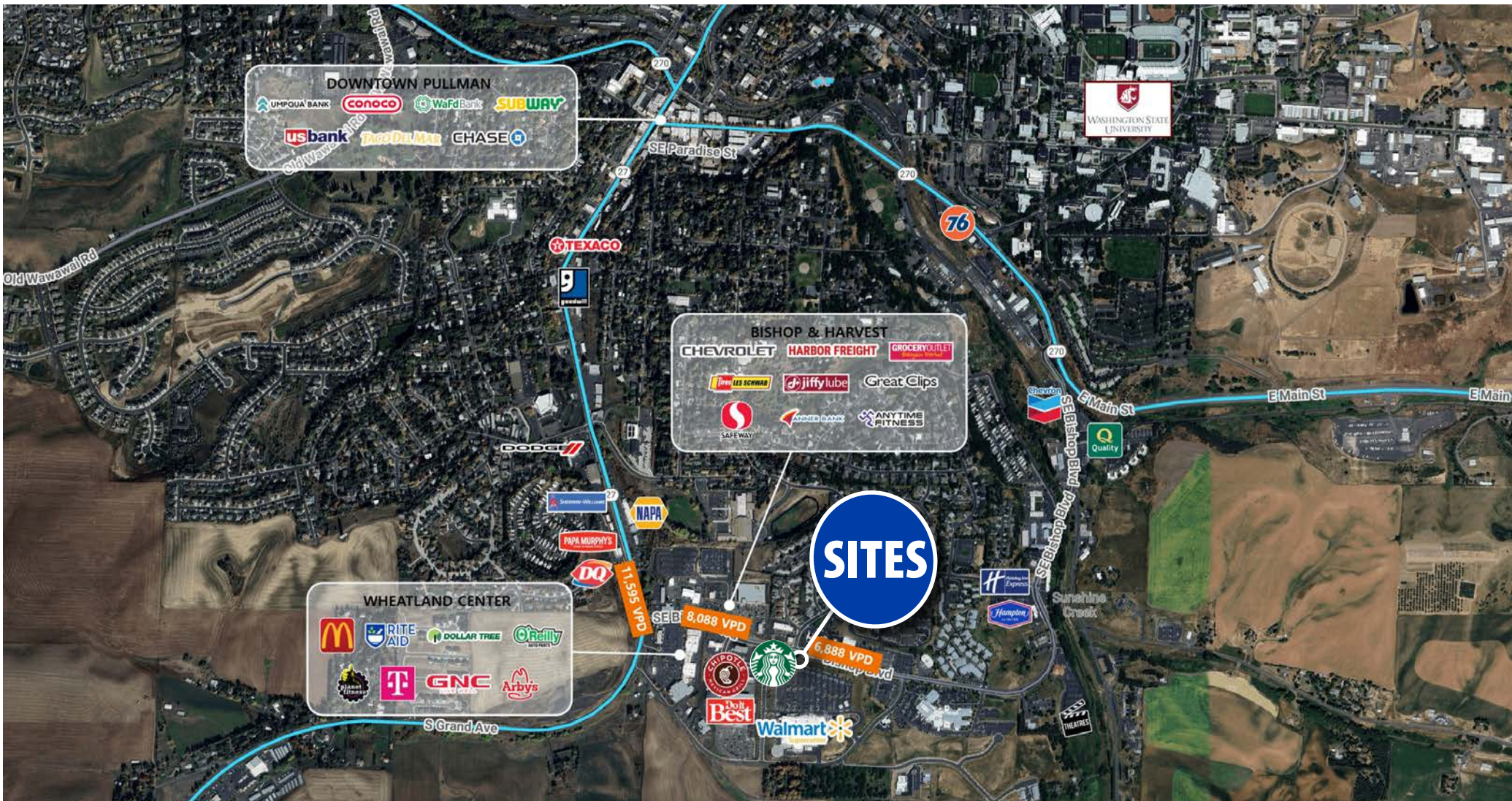
This information was obtained from sources believed reliable but cannot be guaranteed. Any opinions or estimates are used for example only.

**TOK**COMMERCIAL.COM



# AERIAL MAP

## SURROUNDED BY GREAT RETAIL SYNERGY



### 1 MILE RADIUS



POPULATION  
**6,724**



TOTAL RETAIL EXPENDITURE  
**\$121.01M**



AVG. HOUSEHOLD INC.  
**\$115,334**

### 3 MILE RADIUS



POPULATION  
**33,753**



TOTAL RETAIL EXPENDITURE  
**\$515.03M**



AVG. HOUSEHOLD INC.  
**\$80,895**

### 5 MILE RADIUS



POPULATION  
**34,262**



TOTAL RETAIL EXPENDITURE  
**\$525.56M**



AVG. HOUSEHOLD INC.  
**\$81,486**