



**123,958 SQ. FT. INDUSTRIAL FREESTAND WITH 1,200 AMPS OF POWER**

**For Lease 109 SUMMERLEA ROAD** | Brampton, ON

For more information, please contact:

**DRAKE LAFONTAINE**

Sales Representative

416 798 6224

[drake.lafontaine@cbre.com](mailto:drake.lafontaine@cbre.com)

**JOHN LAFONTAINE\***

Vice Chairman

416 798 6229

[john.lafontaine@cbre.com](mailto:john.lafontaine@cbre.com)

\*Sales Representative



**CBRE**



**For Lease**

# 109 SUMMERLEA ROAD | Brampton, ON

109 Summerlea is a well-maintained, high-quality industrial freestand with hard to find heavy power of 1,200 amps. It is situated in an area offering access to an abundant labour force and proximity to 400-series highways, amenities, and public transit. Zoning permits a wide variety of uses.

The property offers excellent shipping capabilities, with 3 points of access and 12 truck level doors, all equipped with levelers, and 1 drive-in door. White boxed warehouse is very bright and clean with fans for circulation and floors are in excellent condition.

## ASKING RENTAL RATE

**\$17.75 net**

## Additional Rent (2025)

**CAM - \$1.54 Per Sq. Ft.**  
(does not include utilities or management fee\*)

**Taxes - \$1.72 Per Sq. Ft.**

\*Landlord management fee equal to three percent (3%) of base rent. If the tenant wants to self manage, the management fee will be reduced to 1.5% of the basic rent.





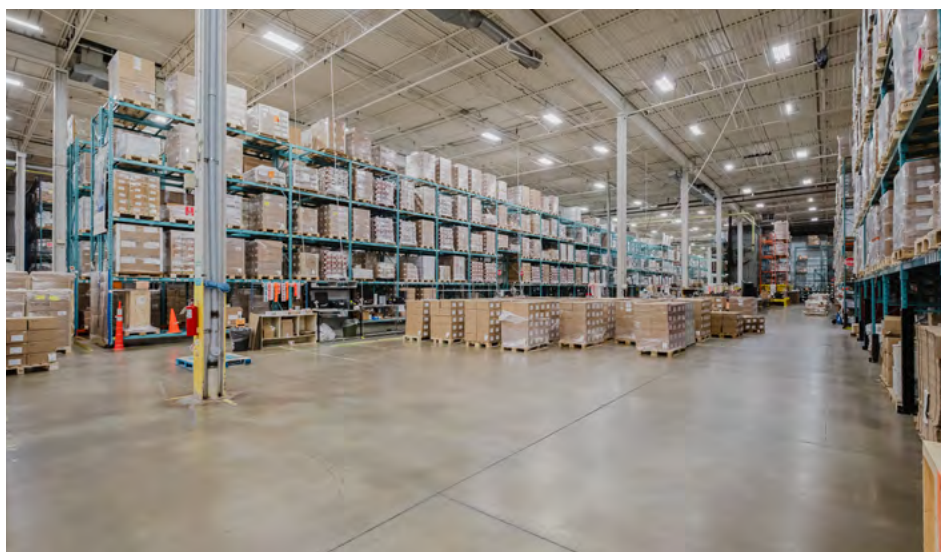
**For Lease**

**109 SUMMERLEA ROAD** | Brampton, ON

## PROPERTY DETAILS

<b>BUILDING SIZE</b>	123,958 Sq. Ft.
<b>LOT SIZE</b>	5.96 Acres
<b>WAREHOUSE AREA</b>	118,156 Sq. Ft.
<b>OFFICE AREA</b>	5,802 Sq. Ft.
<b>CLEAR HEIGHT</b>	30'
<b>SHIPPING</b>	12 Truck Level Doors All equipped with levelers 1 Drive-In Door
<b>BAY SIZE</b>	46' x 35'
<b>POWER</b>	1200 Amps / 600 Volts
<b>POSSESSION</b>	January 1, 2026
<b>ZONING</b>	M3A

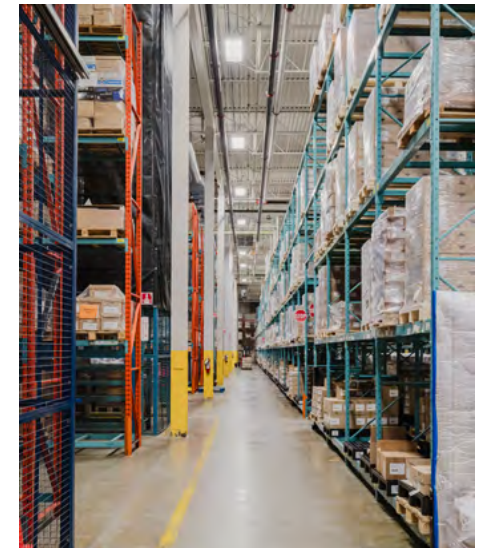
*All information to be verified*





**For Lease**

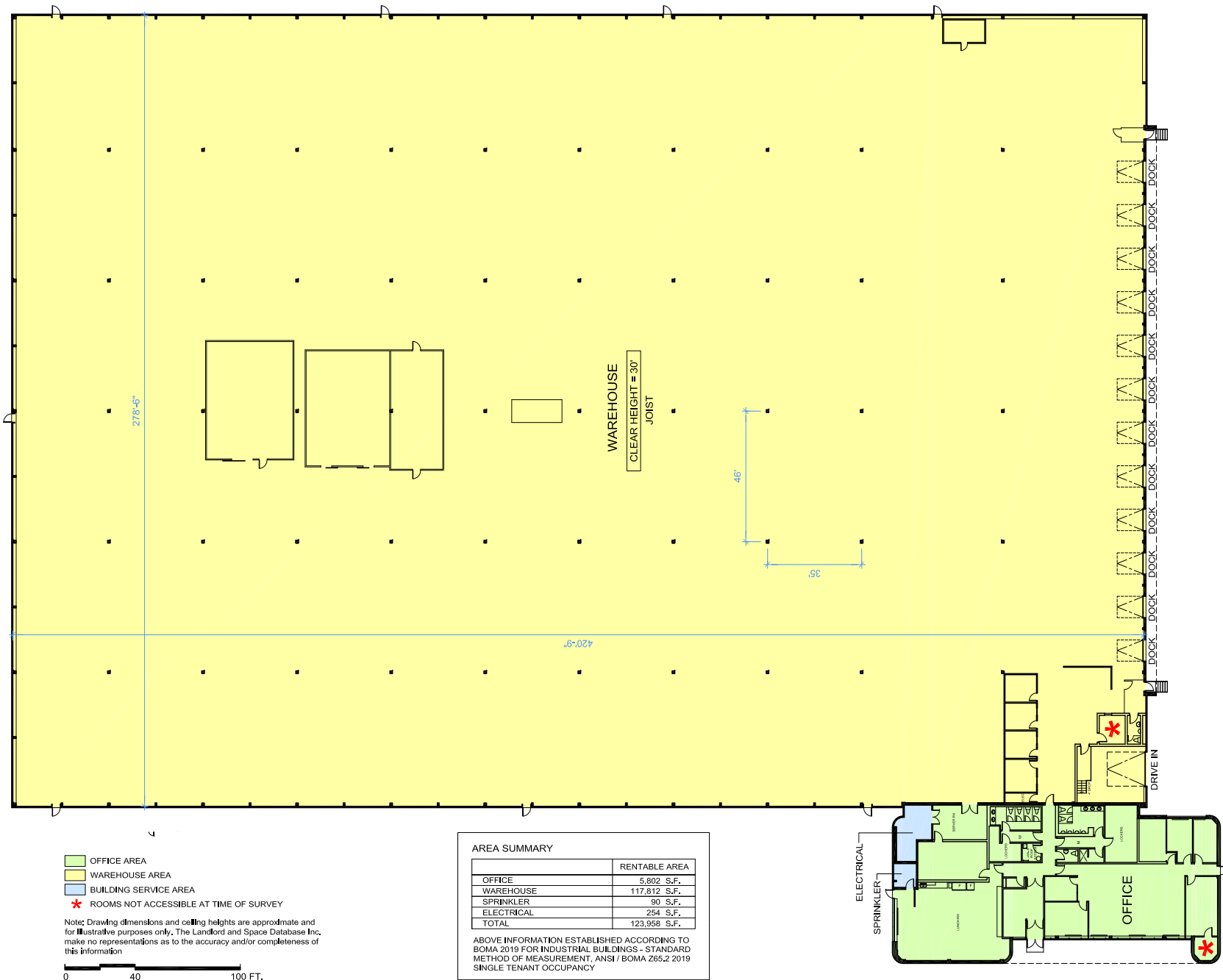
**109 SUMMERLEA ROAD** | Brampton, ON



## For Lease

**109 SUMMERLEA ROAD** | Brampton, ON

# FLOOR PLAN



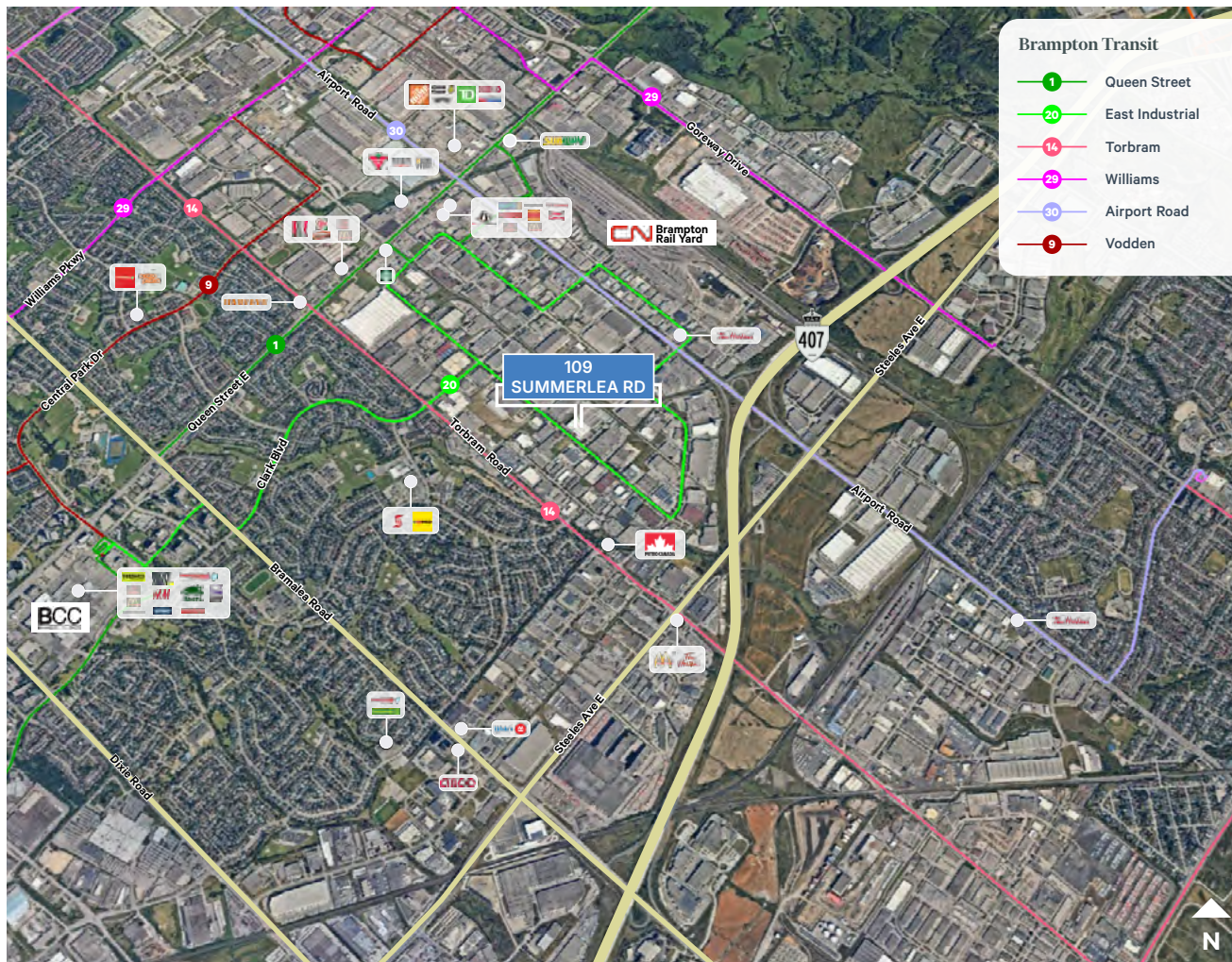


For Lease

# 109 SUMMERLEA ROAD | Brampton, ON

Easy access to 400-series highways, a variety of amenities, and public transit.

## NEARBY AMENITIES & TRANSIT



Map locations are approximate. All drive times are approximate (source: Google Maps).

## TRAVEL DISTANCES

### BRAMPTON CN INTERMODAL

4 MIN | 2.2 KM

### HIGHWAY 407

4 MIN | 2.3 KM

### HIGHWAY 410

7 MIN | 9.3 KM

### HIGHWAY 27

11 MIN | 9.0 KM

### HIGHWAY 401

11 MIN | 13.6 KM

### HIGHWAY 403

11 MIN | 14.4 KM

### HIGHWAY 427

13 MIN | 7.3 KM

### TORONTO PEARSON INTERNATIONAL AIRPORT

### VAUGHAN CP INTERMODAL

21 MIN | 16.8 KM

### TORONTO DOWNTOWN

34 MIN | 40.0 KM

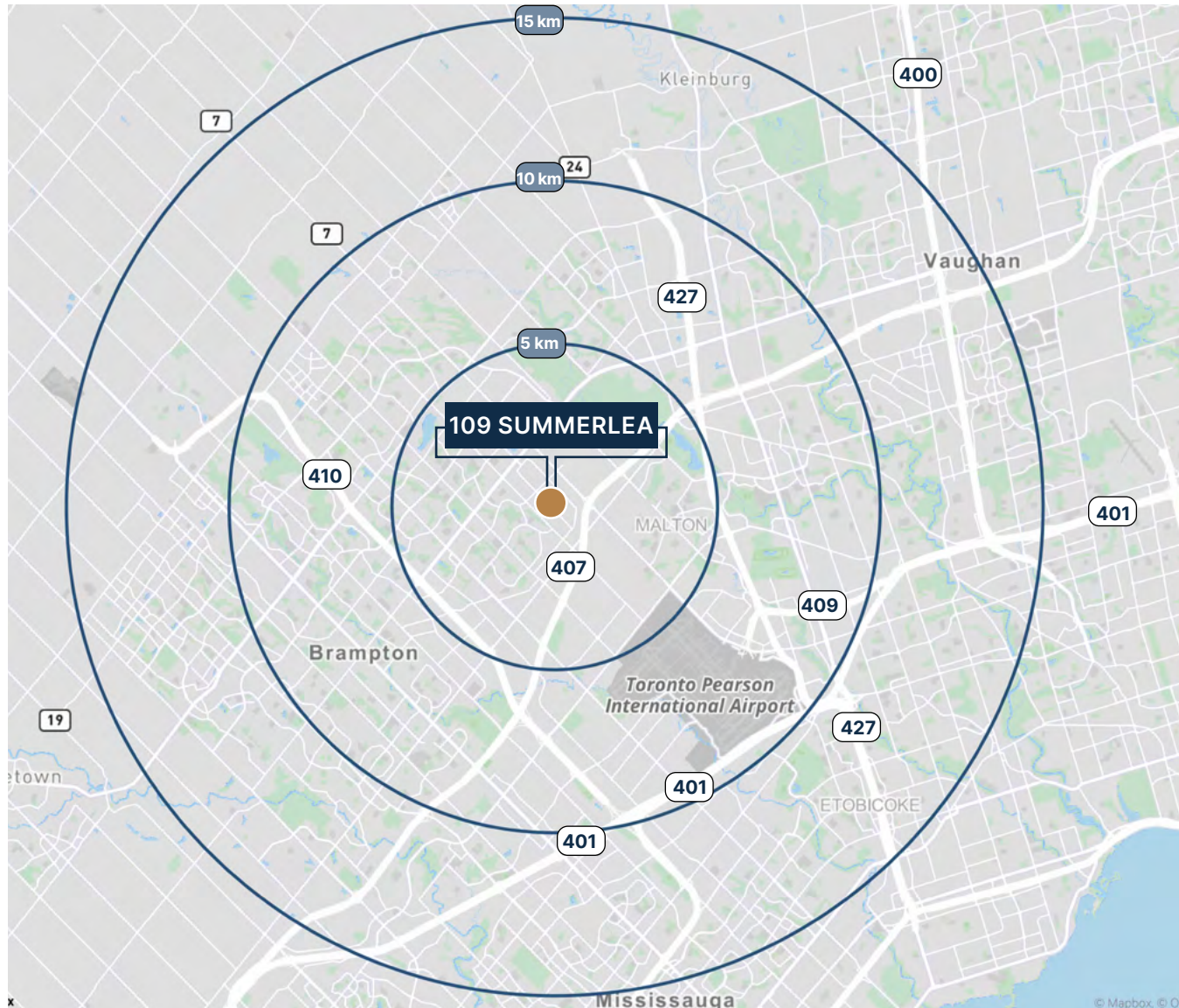


**For Lease**

**109 SUMMERLEA ROAD**

Brampton, ON

**LOCATION**



## Access to the GTA's Largest Labour Pool

**5 KM**

**POPULATION**

173,553

**LABOUR FORCE**

95,983

**10 KM**

**POPULATION**

695,769

**LABOUR FORCE**

385,301

**15 KM**

**POPULATION**

1,447,802

**LABOUR FORCE**

803,398

### BRAMPTON DEMOGRAPHICS



**466,208**

Population (2023)



**809,599**

Projected Population (2028)



**432,509**

Labour Force



**\$145,011**

Avg. Household Income

**CBRE**

**For Lease**

**109 SUMMERLEA ROAD** | Brampton, ON

## THE TEAM



Pure Industrial is one of Canada's leading providers of industrial real estate. With offices in Toronto, Montreal, Quebec City, and Vancouver and top tier properties across the country, we believe in the power of vision and the strength of partnership.

We're not just providing industrial real estate; we are laying the foundation for your business to thrive and are committed to being your partner in growth. We offer a portfolio of more than 42M square feet of prime locations across Canada, ranging from small warehouses to large industrial developments, and diligently serve more than 1,400 customers every day.

Our dedicated, customer-focused team is here to build lasting relationships, deliver highly responsive, personalized service, and keep your supply chain seamless, from the first mile to the last.



CBRE Limited is the world's most recognized commercial real estate services brand, we represent 90 of the Fortune 100.

Our global marketing platform helps maximize exposure and unlock value for our clients. Developing solutions for a broad range of clients has been at the forefront of our business and our expertise is unmatched. Our team of the top industrial market experts in Canada is on standby to assist you in navigating all aspects of your most important business decisions in the local market and beyond.

For more information, please contact:

**DRAKE LAFONTAINE**

Sales Representative

416 798 6224

drake.lafontaine@cbre.com

**JOHN LAFONTAINE\***

Vice Chairman

416 798 6229

john.lafontaine@cbre.com

\*Sales Representative



CBRE Limited, Real Estate Brokerage | 5935 Airport Road, Suite 700 | Mississauga ON L4V 1W5 | T 416 674 7900 | F 416 674 6575 | [www.cbre.com](http://www.cbre.com)

This disclaimer shall apply to CBRE Limited, Real Estate Brokerage, and to all other divisions of the Corporation ("CBRE"). The information set out herein, including, without limitation, any projections, images, opinions, assumptions and estimates obtained from third parties (the "Information") has not been verified by CBRE, and CBRE does not represent, warrant or guarantee the accuracy, correctness and completeness of the Information. CBRE does not accept or assume any responsibility or liability, direct or consequential, for the Information or the recipient's reliance upon the Information. The recipient of the Information should take such steps as the recipient may deem necessary to verify the Information prior to placing any reliance upon the Information. The Information may change and any property described in the Information may be withdrawn from the market at any time without notice or obligation to the recipient from CBRE. CBRE and the CBRE logo are the service marks of CBRE Limited and/or its affiliated or related companies in other countries. All other marks displayed on this document are the property of their respective owners. All Rights Reserved. Mapping Sources: Canadian Mapping Services [canadamapping@cbre.com](mailto:canadamapping@cbre.com); DMTI Spatial, Environics Analytics, Microsoft Bing, Google Earth