



For Lease

YARD

4200 PIGGLY WIGGLY DRIVE

CHARLESTON, SC 29418

for more information, please contact:

■ **MILES MARTSCHINK, CCIM** BROKER 843.414.4078 miles@cctre.com

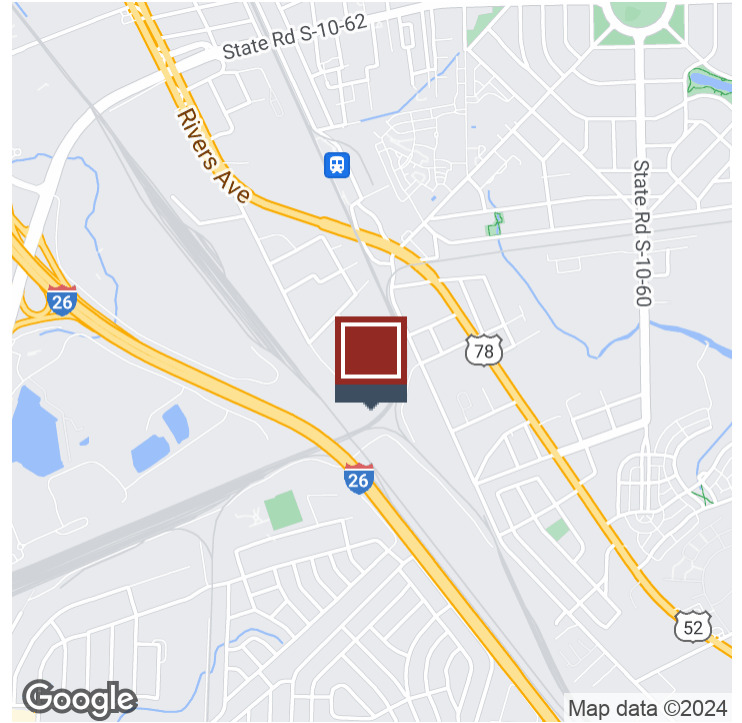
11 Cunnington Avenue 843.577.6722 **CCTRE.COM**



LAND FOR LEASE

3.0 ACRE STORAGE YARD

CHARLESTON, SC 29418



OFFERING SUMMARY

Lease Rate:	\$16,500.00 per month (NNN)
Lot Size:	3 Acres
Zoning:	(M1) Light Industrial

PROPERTY OVERVIEW

Newly constructed yard ready for occupancy. Utilities at the site. Centrally located with easy access to I-526 and I-26.

Listing agent has an ownership interest in the property.

PROPERTY HIGHLIGHTS

- 1.0 miles – intersection of I-526 & Rivers Avenue
- 6 miles to SPA Leatherman Terminal
- 5 miles to SPA North Charleston Terminal
- 14 miles to SPA Wando Terminal
- 1.5 miles to I-26 & I-526 Interchange

for more information, please contact:

MILES MARTSCHINK, CCIM

C: 843.870.5850 | O: 843.414.4078

miles@cctre.com

11 Cunnington Avenue Charleston, SC 29405 CCTRE.COM



This information has been obtained from sources believed reliable, but has not been verified for accuracy or completeness. Prospective buyer should conduct a careful, independent investigation of the property to verify all information and conditions. No warranties are expressed or implied. Reliance on this information is solely at your own risk.

LAND FOR LEASE

3.0 ACRE STORAGE YARD

CHARLESTON, SC 29418



for more information, please contact:

MILES MARTSCHINK, CCIM

C: 843.870.5850 | O: 843.414.4078

miles@cctre.com

11 Cunnington Avenue Charleston, SC 29405 CCTRE.COM

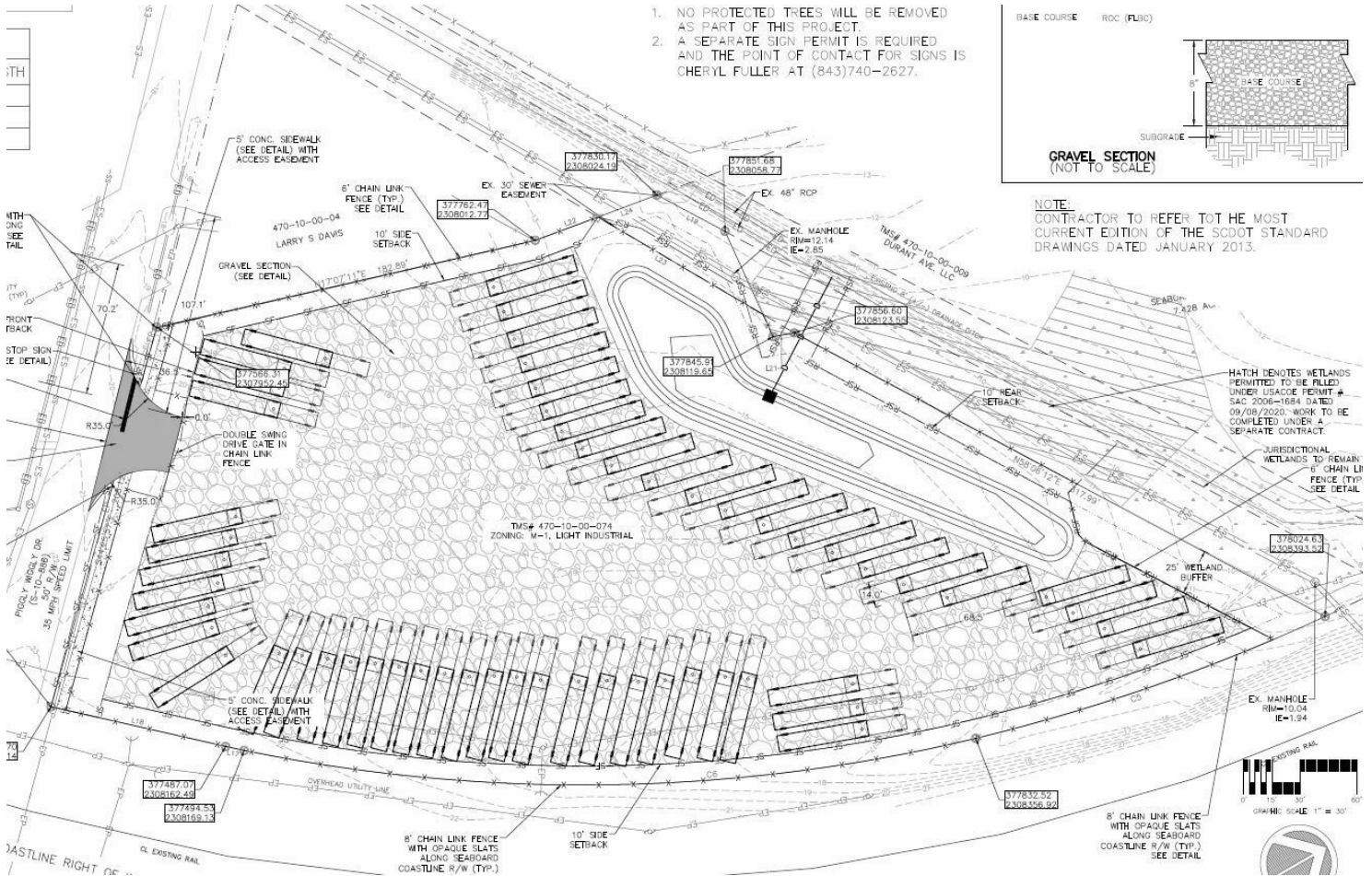
This information has been obtained from sources believed reliable, but has not been verified for accuracy or completeness. Prospective buyer should conduct a careful, independent investigation of the property to verify all information and conditions. No warranties are expressed or implied. Reliance on this information is solely at your own risk.



LAND FOR LEASE

3.0 ACRE STORAGE YARD

CHARLESTON, SC 29418



for more information, please contact:

MILES MARTSCHINK, CCIM

C: 843.870.5850 | O: 843.414.4078

miles@cctre.com

11 Cunningham Avenue Charleston, SC 29405 **CCTRE.COM**

This information has been obtained from sources believed reliable, but has not been verified for accuracy or completeness. Prospective buyer should conduct a careful, independent investigation of the property to verify all information and conditions. No warranties are expressed or implied. Reliance on this information is solely at your own risk.



LAND FOR LEASE

3.0 ACRE STORAGE YARD

CHARLESTON, SC 29418



for more information, please contact:

MILES MARTSCHINK, CCIM

C: 843.870.5850 | O: 843.414.4078

miles@cctre.com

11 Cunnington Avenue Charleston, SC 29405 CCTRE.COM

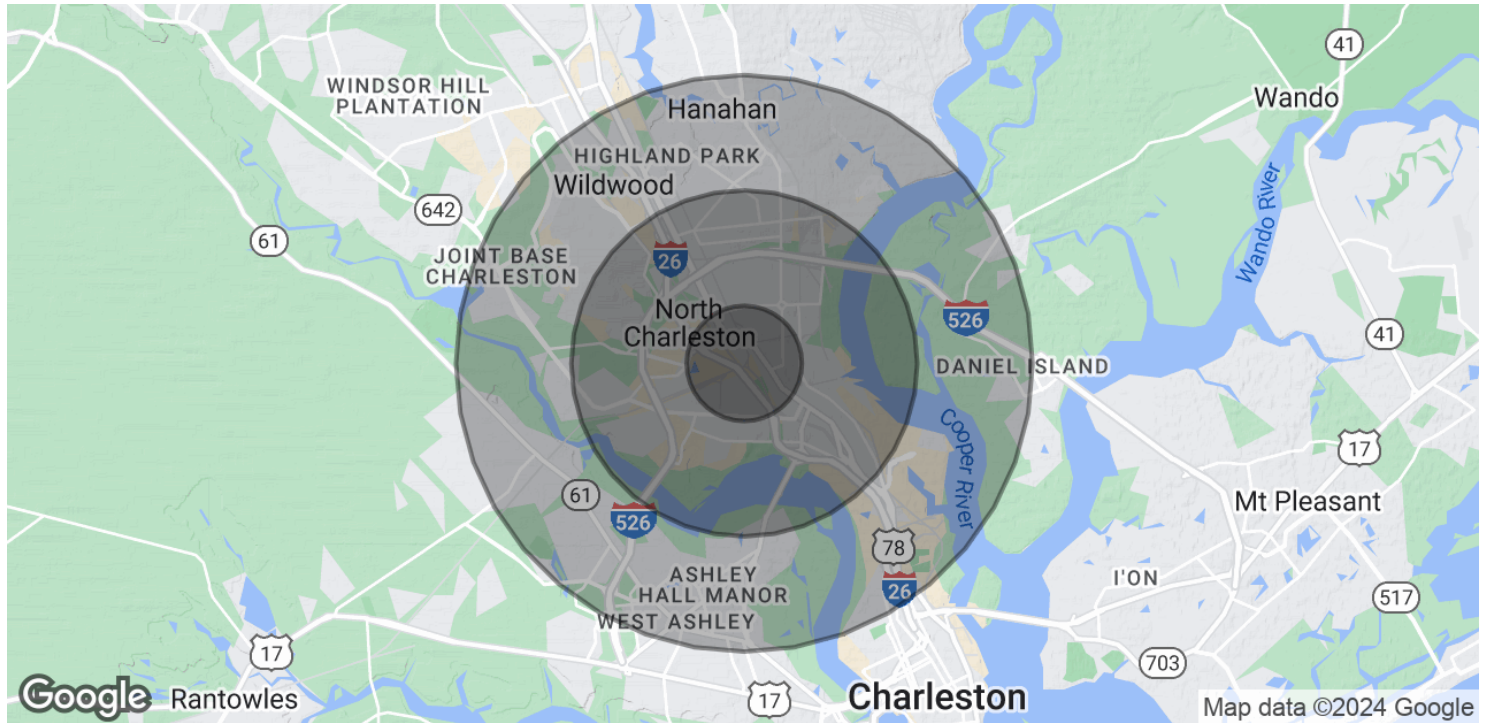
This information has been obtained from sources believed reliable, but has not been verified for accuracy or completeness. Prospective buyer should conduct a careful, independent investigation of the property to verify all information and conditions. No warranties are expressed or implied. Reliance on this information is solely at your own risk.



LAND FOR LEASE

3.0 ACRE STORAGE YARD

CHARLESTON, SC 29418



POPULATION

	1 MILE	3 MILES	5 MILES
Total Population	7,511	46,785	103,967
Average Age	33.9	33.3	33.8
Average Age (Male)	33.0	32.0	32.8
Average Age (Female)	34.6	34.6	35.0

HOUSEHOLDS & INCOME

	1 MILE	3 MILES	5 MILES
Total Households	2,956	17,407	40,423
# of Persons per HH	2.5	2.7	2.6
Average HH Income	\$36,484	\$40,205	\$49,559
Average House Value	\$131,173	\$145,273	\$186,321

* Demographic data derived from 2020 ACS - US Census

for more information, please contact:

MILES MARTSCHINK, CCIM

C: 843.870.5850 | O: 843.414.4078

miles@cctre.com

11 Cunnington Avenue Charleston, SC 29405 CCTRE.COM



This information has been obtained from sources believed reliable, but has not been verified for accuracy or completeness. Prospective buyer should conduct a careful, independent investigation of the property to verify all information and conditions. No warranties are expressed or implied. Reliance on this information is solely at your own risk.