



Office Sublease

Lease Rate:

\$17.51

SF / MG

# Post Office Place

248 West Center Street  
Orem, Utah 84057

## Property Details

- Building 5:
  - Suite 100: 4,400 SF
- 5 Private Offices
- Conference Room
- Breakroom
- Great Central Orem Location
- Easy access from I-15 and Orem
- Ample parking
- Plug & Play
- LED: May 2026

Contact:

**John Monson**  
Vice President  
+1 801 702 4675  
john.monson@colliers.com

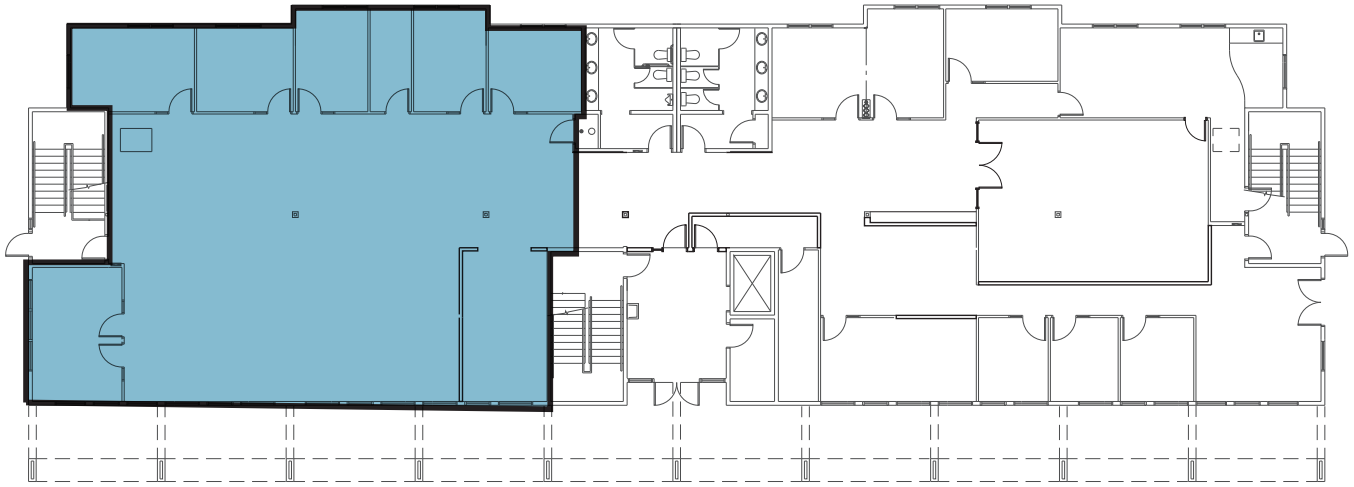
**Colliers**  
2100 Pleasant Grove Blvd., Suite 200  
Pleasant Grove, UT 84062  
Main: +1 801 947 8300  
colliers.com



# Site & Floor Plan

## BUILDING # 5

■ Suite 100: 4,400 SF



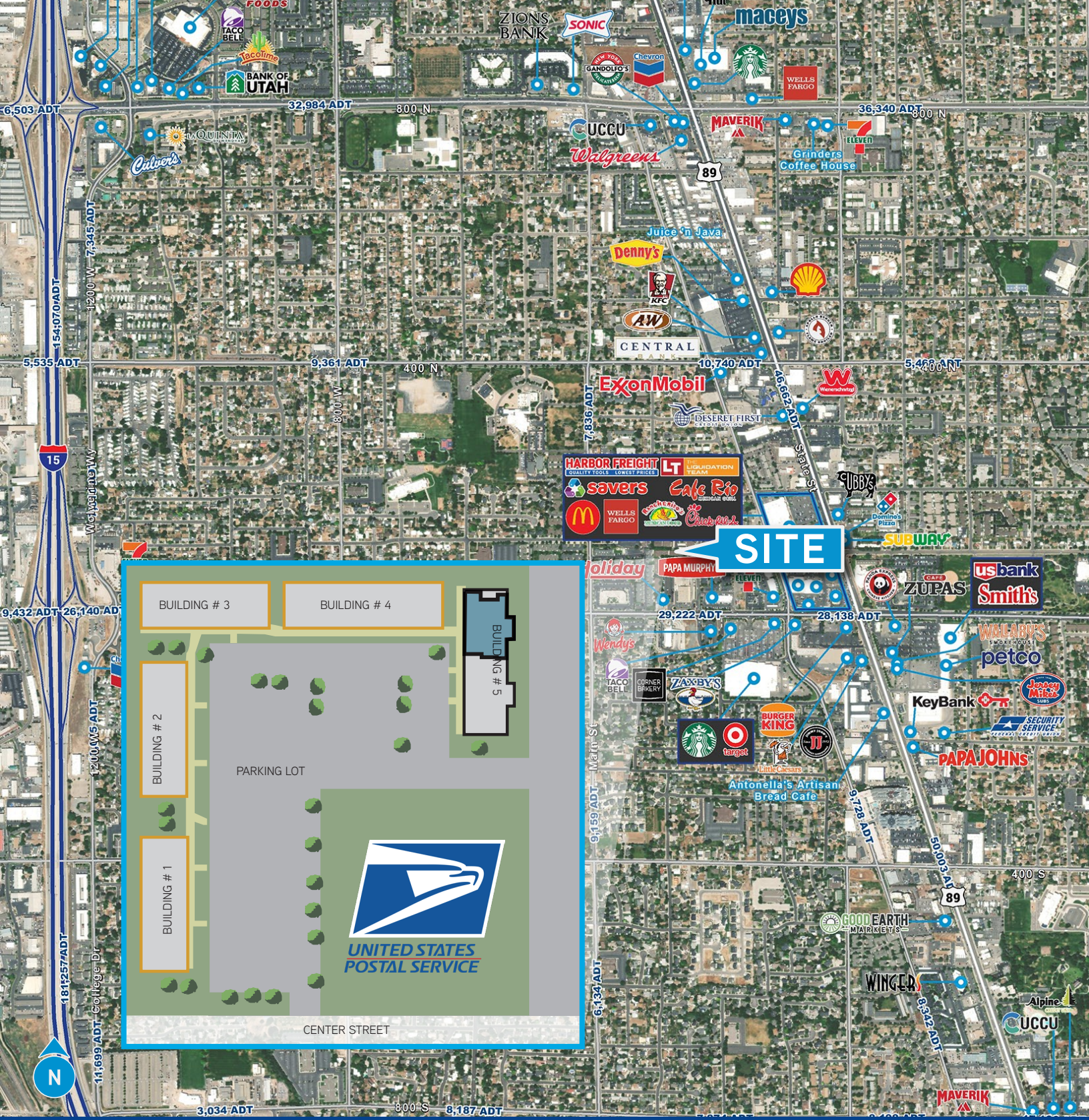




Suite 100: 4,400 SF







**John Monson**  
 Vice President  
 +1 801 702 4675  
 john.monson@colliers.com

This document has been prepared by Colliers International for advertising and general information only. Colliers International makes no guarantees, representations or warranties of any kind, expressed or implied, regarding the information including, but not limited to, warranties of content, accuracy and reliability. Any interested party should undertake their own inquiries as to the accuracy of the information. Colliers International excludes unequivocally all inferred or implied terms, conditions and warranties arising out of this document and excludes all liability for loss and damages arising therefrom. This publication is the copyrighted property of Colliers International and/or its licensor(s). ©2025. All rights reserved.