



## NORTH MEMORIAL - ROBBINSDALE

3366 Oakdale Avenue N. ♦ Robbinsdale, MN 55422



- ♦ Connected to the North Memorial Health Hospital (Level I Trauma Center)
- ♦ Referral Relationships among peers
- ♦ Covered parking options available
- ♦ Multiple Specialties on campus
- ♦ On-site Pharmacy
- ♦ Located in the heart of Robbinsdale

## FOR LEASE

**LAURA B. MOORE**  
(952) 395-5234  
laura.moore@frauenshuh.com



**JASON A. BUTTERFIELD**  
(952) 460-9830  
jason.butterfield@frauenshuh.com

# NORTH MEMORIAL - ROBBINSDALE

3366 Oakdale Avenue N. ♦ Robbinsdale, MN 55422

## ◆ BUILDING DETAILS

- Approximately 63,393 SF
- Built in 1969
- 2026 Annual Base Rent: Negotiable
- 2026 Ops/Taxes Est.: \$13.50 PSF
- Space Available:

Suite 140	1,610 RSF
Suite 215	10,650 RSF
Suite 302	2,809 RSF
Suite 315	11,346 RSF

## ◆ Specialties On-Campus

- Cancer/Oncology
- Child Life Services
- Emergency Services
- Heart & Vascular
- Labs & Imaging
- Infectious Disease
- Maternal Fetal Medicine
- Palliative Care
- Mental Health
- Neonatology
- Family Birth Center
- Rehabilitation
- Trauma Care
- Stroke



# FRAUENSHUH

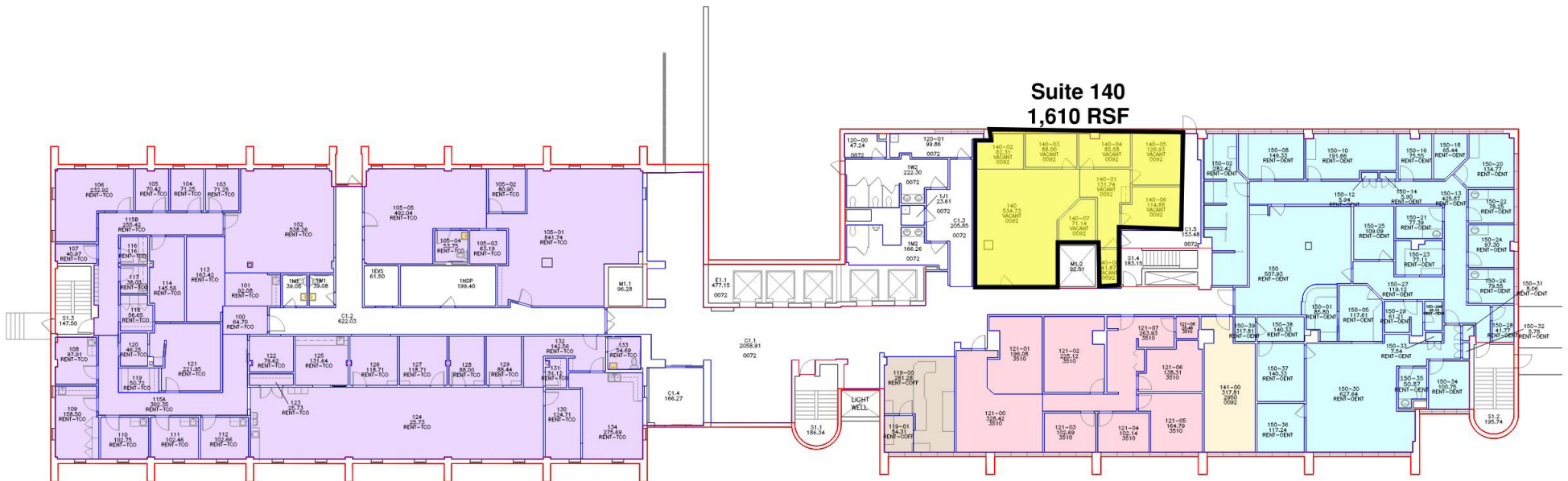
COMMERCIAL REAL ESTATE

[www.frauenshuh.com](http://www.frauenshuh.com)

7101 W. 78th Street ♦ Minneapolis, MN

# NORTH MEMORIAL - ROBBINSDALE ♦ FOR LEASE ♦ FLOOR PLAN

Robbinsdale, MN



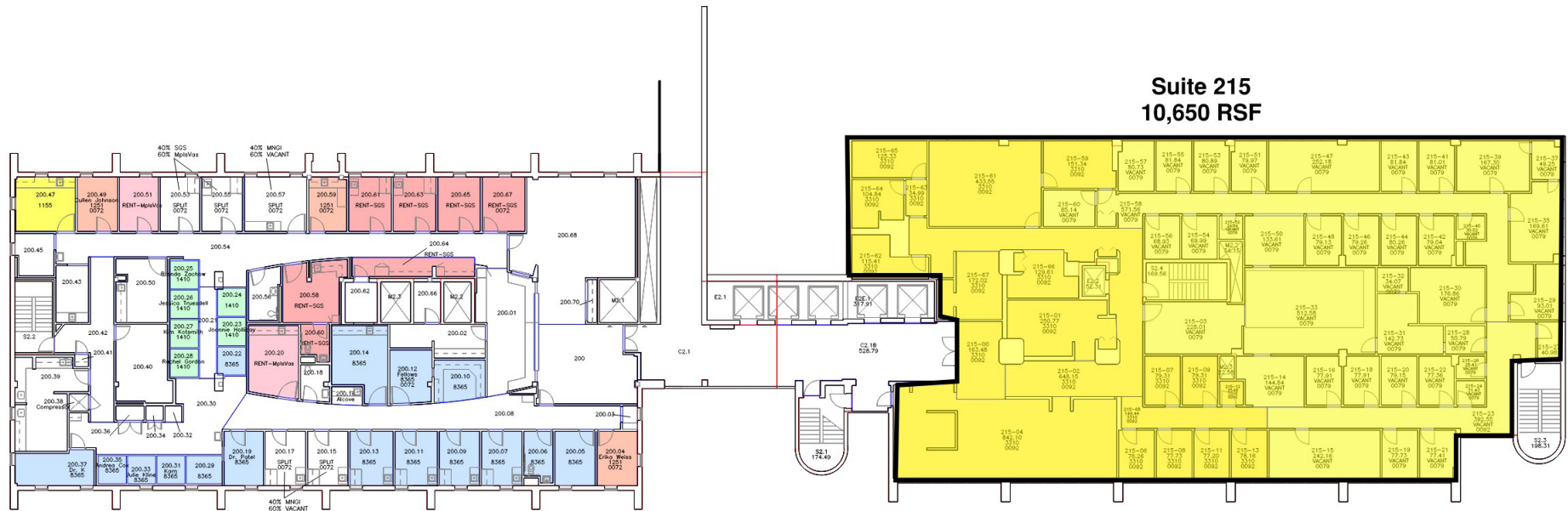
**LARUA B. MOORE**  
(952) 395-5234  
laura.moore@frauenshuh.com



**JASON A. BUTTERFIELD**  
(952) 460-9830  
jason.butterfield@frauenshuh.com

# NORTH MEMORIAL - ROBBINSDALE ♦ FOR LEASE ♦ FLOOR PLAN

Robbinsdale, MN



**LAURA B. MOORE**  
 (952) 395-5234  
 laura.moore@frauenshuh.com

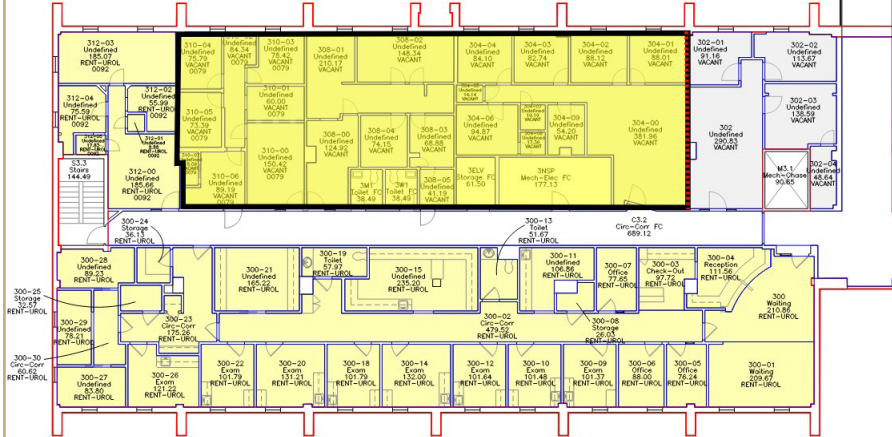


**JASON A. BUTTERFIELD**  
 (952) 460-9830  
 jaasn.butterfield@frauenshuh.com

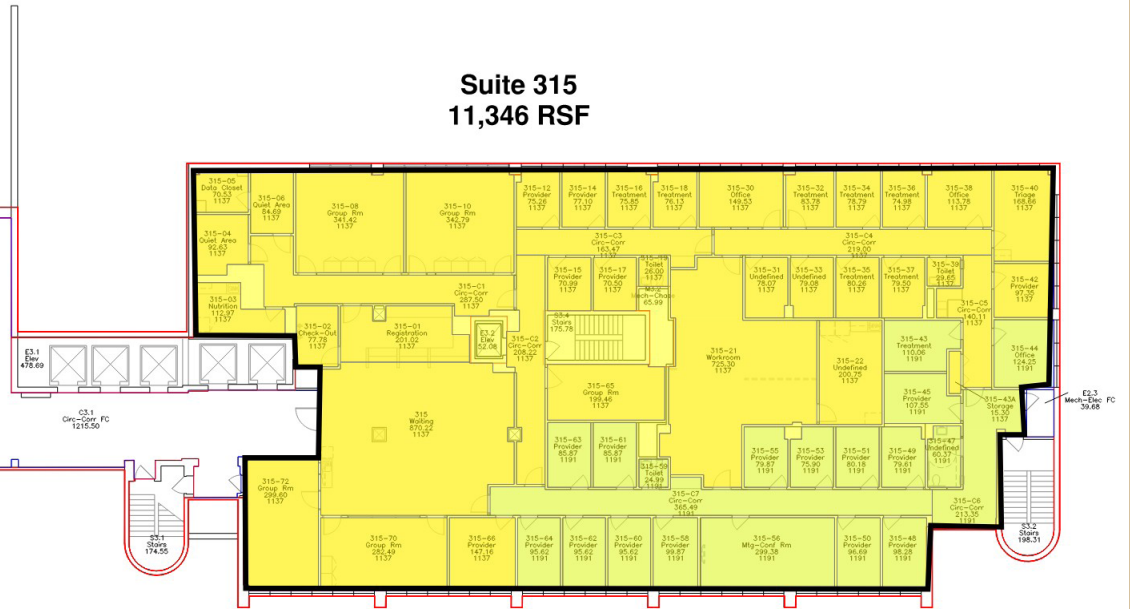
# NORTH MEMORIAL - ROBBINSDALE ♦ FOR LEASE ♦ FLOOR PLAN

Robbinsdale, MN

**Suite 302**  
2,809 RSF



**Suite 315**  
11,346 RSF



**LAURA B. MOORE**

(952) 395-5234

[laura.moore@frauenshuh.com](mailto:laura.moore@frauenshuh.com)

ESTD 1983



**FRAUENSHUH**

COMMERCIAL REAL ESTATE

**JASON A. BUTTERFIELD**

(952) 460-9830

[jason.butterfield@frauenshuh.com](mailto:jason.butterfield@frauenshuh.com)