

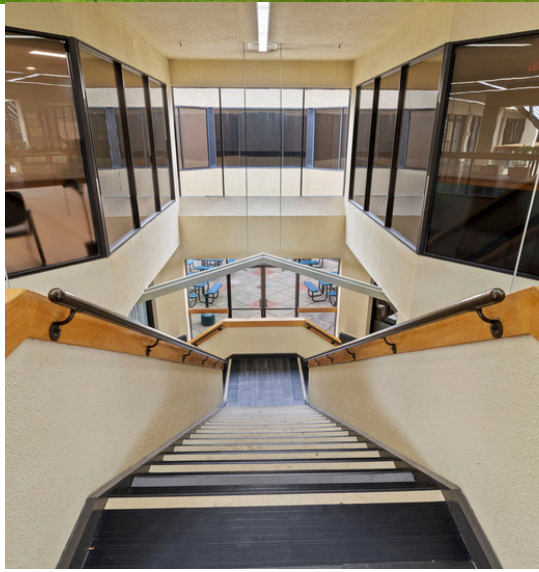


ELKINS PARK SQUARE

8080 OLD YORK RD
ELKINS PARK, PA

OFFICE
RETAIL
& RESTAURANT
SPACE FOR LEASE

700-7,187SF
AVAILABLE

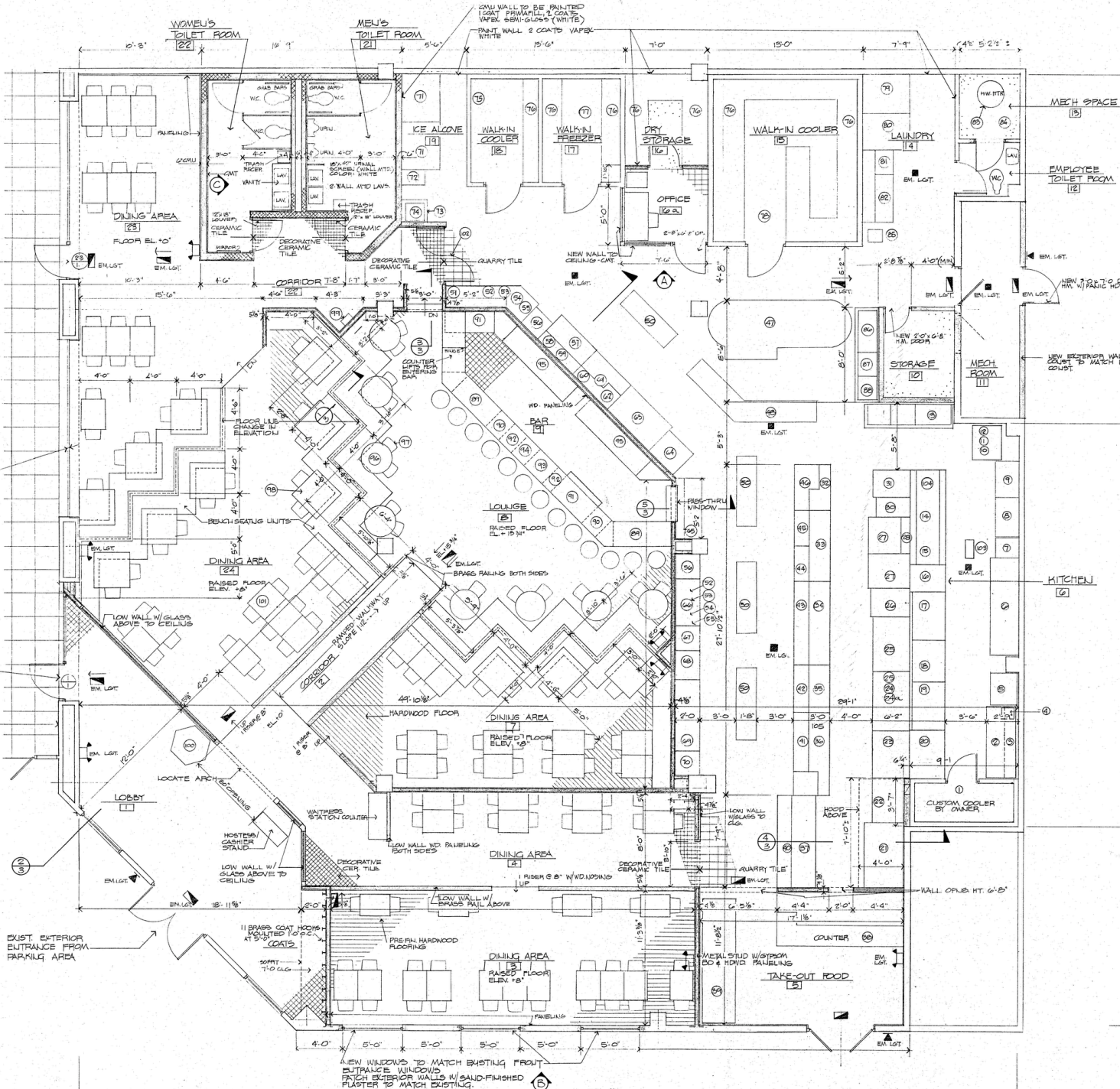


RESTAURANT FLOOR PLAN

7,187SF \$24.00/SF NNN

BUILT OUT MOVE-IN READY RESTAURANT/BAR (FORMER MARCO POLO RISTORANTE & BAR)

INCLUDES LIQUOR LICENSE AND ALL FF&E



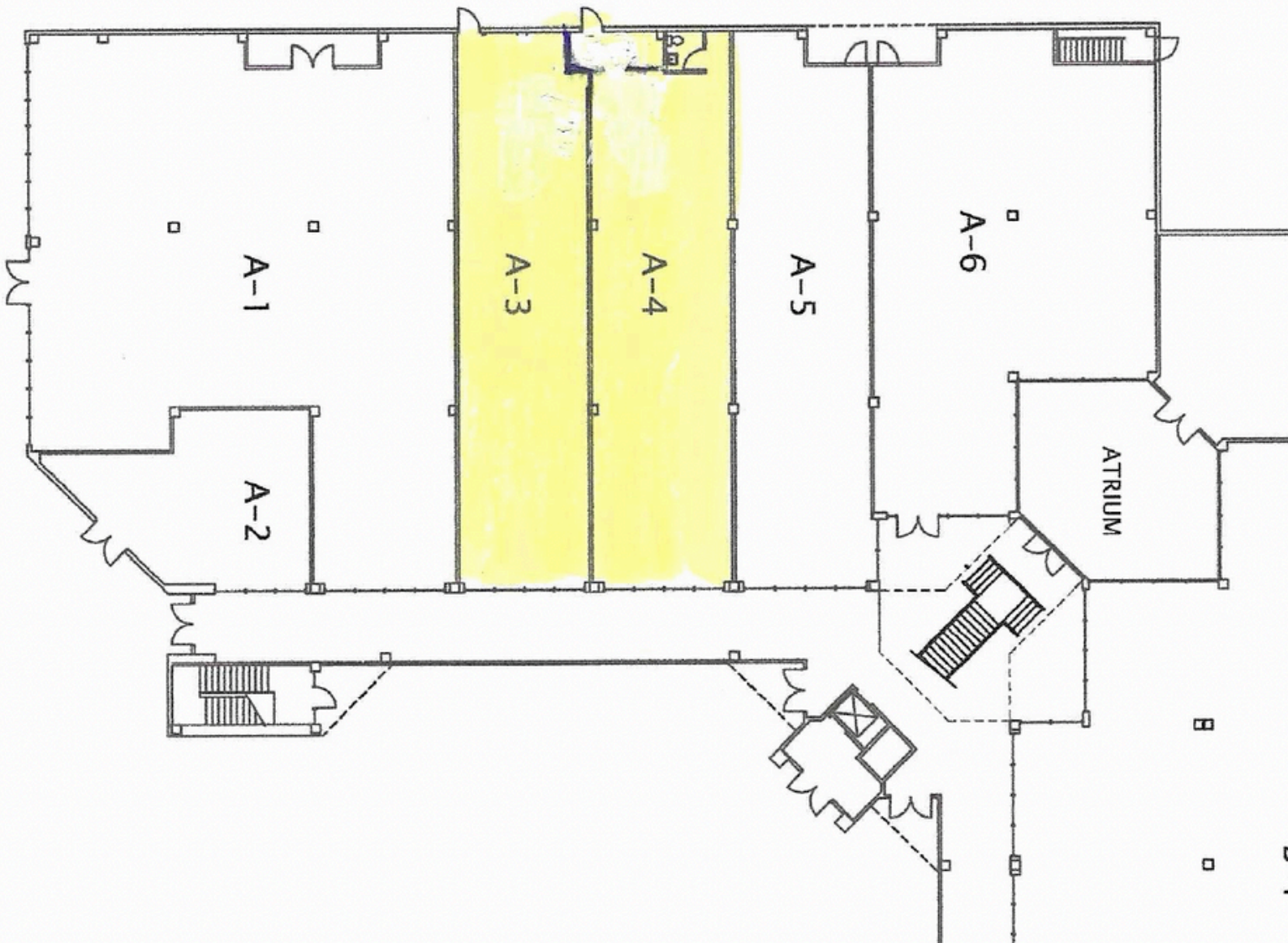
FLOOR PLAN

RETAIL/RESTAURANT FLOOR PLAN

\$18.00/SF NNN

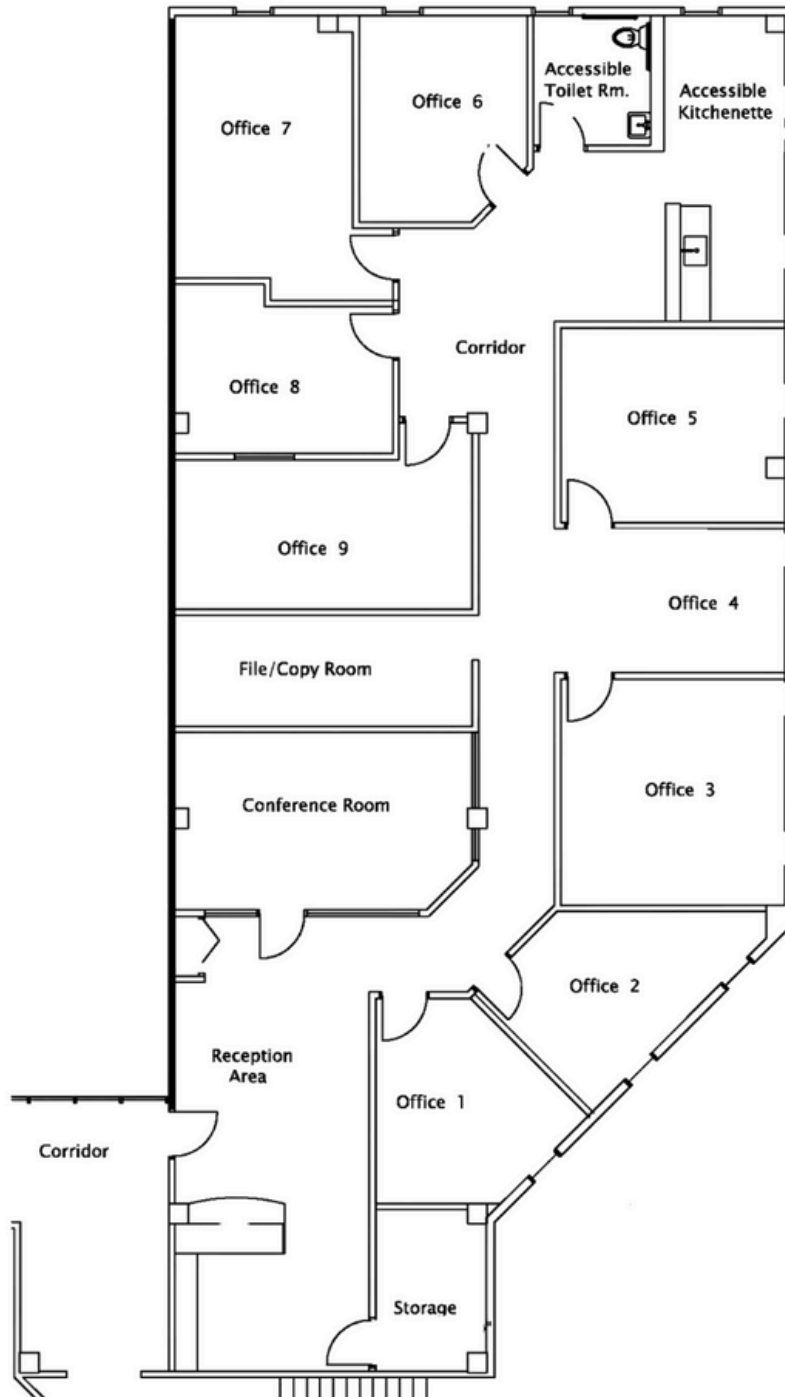
A-3 1,736SF

A-4 1,890SF



OFFICE FLOOR PLAN

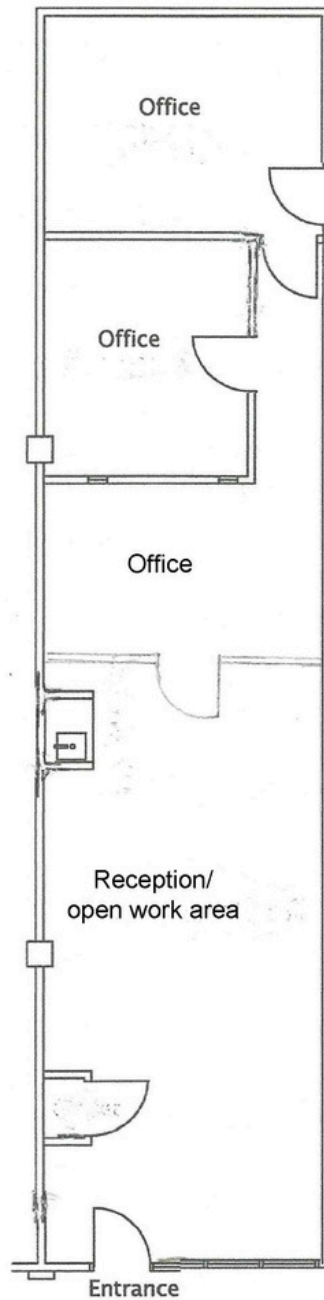
3,830SF \$22.00/SF + UTILITIES
PRIVATE BATHROOM AND
KITCHENETTE



OFFICE FLOOR PLAN

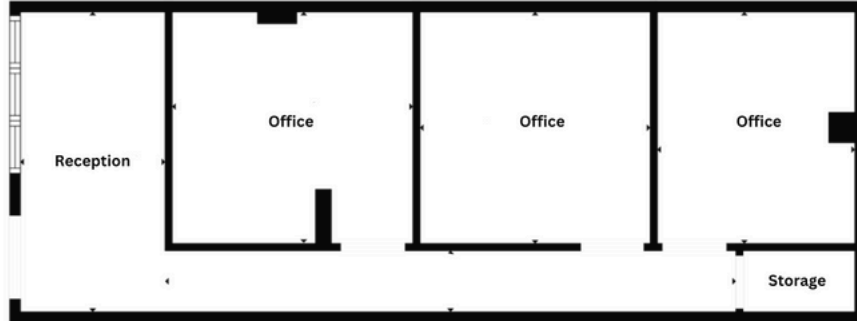
\$18.00/SF + UTILITIES

1,103SF



OFFICE FLOOR PLAN

\$18.00/SF + UTILITIES
719 SF



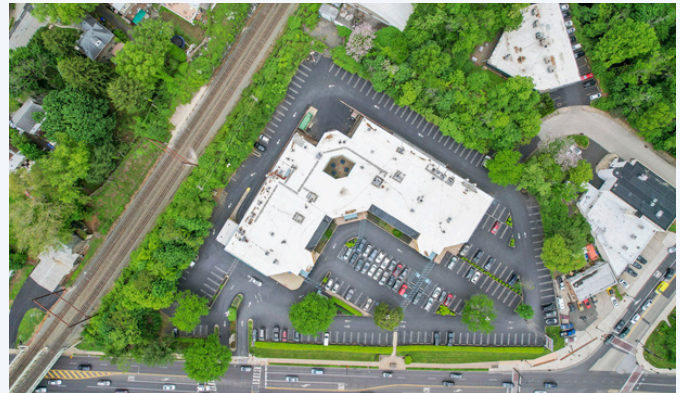
8080 OLD YORK RD

PROPERTY DESCRIPTION

Elkins Park Square is a thriving center in Elkins Park, a northern suburb of Philadelphia with a rich history. This convenient location offers a mix of retail, restaurant and office spaces, totaling over 61,500 square feet. Whether you're looking for a meal, a workout at the gym, or banking services, Elkins Park Square has something for everyone. It also boasts a variety of medical, physical therapy, and other professional offices.

Situated right on a busy highway (Route 611) at 8080 Old York Road with a traffic light for easy access, Elkins Park Square offers excellent visibility for businesses. Plus, with over 200 parking spaces surrounding the building, convenience is guaranteed for tenants and visitors alike.

- **Zoning:** Mixed Use MU-3
- Abundant On-Site Parking
- Signage Available
- Restaurant Space is Fully Fit out and Move In Ready
- Outside Patio Area and Community Room
- Spaces Available for Retail, Medical, Office and Restaurant Users



CONTACT US

Brett Fox

215.760.8488 | bfox@msfoxre.com

Michael Rush

215.837.7341 | mrush@msfoxre.com



M.S. FOX REAL ESTATE GROUP

M.S. Fox Real Estate Group

215.568.8000

Suite 1410, 1628 JFK
Boulevard, Philadelphia, PA
19103

