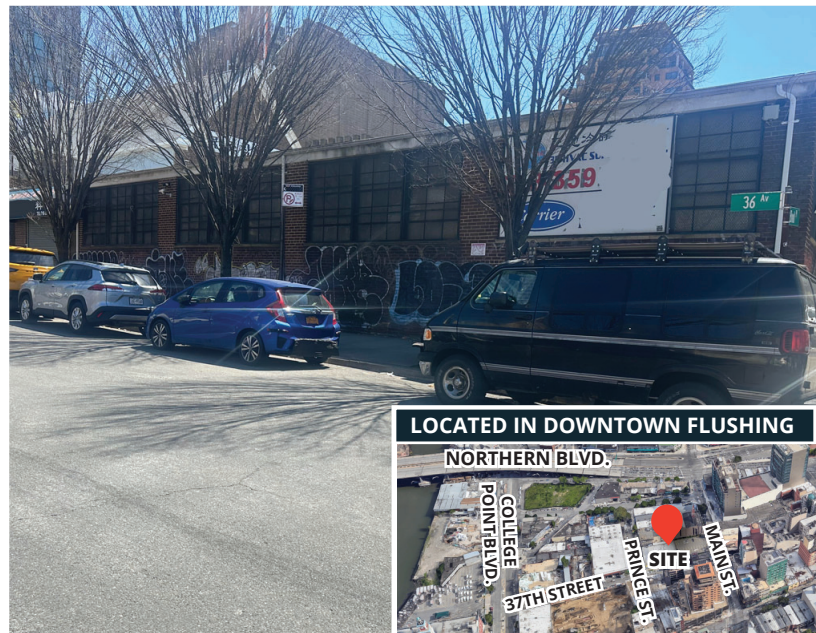


EXCLUSIVE

FOR LEASE: 17,730 SF WAREHOUSE WITH PARKING IN DOWNTOWN FLUSHING!

36-09 BUD PL. | FLUSHING, NY 11354




PROPERTY OVERVIEW

- SIZE: 17,730 SF TOTAL
- PARKING LOT: 570 SF +
- 6,000 SF ON BUD PL. & 36TH AVE.

PROPERTY FEATURES

- 12'-16' CEILINGS
- **BLOCK-TO-BLOCK FRONTAGE**
- 6 OVERHEAD DOORS
- M1-1 ZONING - GOOD FOR ALL USES

ACCESS:

- WALK TO: **7** MTA Long Island Rail Road Q24 BUS
- DRIVE TO:     

PRISTINE INDUSTRIAL BUILDING STEPS TO NORTHERN BOULEVARD



FOR MORE INFORMATION CONTACT:

CHARLES WONG
(917) 767-6137 (CELL)
cwong@greiner-maltz.com

GREINER-MALTZ
REAL ESTATE

Creating Opportunities Together
WWW.GREINER-MALTZ.COM

Any information set-forth herein has been obtained from sources deemed reliable, however, we have not verified it, and make no representation or warranty of any kind, including without limitation: condition: either latent or patent, size or manner of construction of the property, compliance with local law, and environmental conditions. All information submitted herein is subject to errors and omissions, and the right of our principal(s), to withdraw, modify, or condition the listing with-out prior notice. Broker cooperation encouraged.