

**20 W. COLLINGS AVE**  
COLLINGSWOOD, NJ 08108

**HEART OF  
THE BOROUGH**



## **UNITS B+C AVAILABLE**

UNIT B: 3,500 SF GROUND FLOOR | UNIT C: 3,913 SF 2<sup>ND</sup> FLOOR

**EXCLUSIVELY  
REPRESENTED BY  
THE FLYNN COMPANY**

**DAVID RICCI**  
DRICCI@FLYNNCO.COM  
215-561-6565 X 154

**BRANDO CASALICCHIO**  
BCASALICCHIO@FLYNNCO.COM  
215-561-6565 X 153



### **PROPERTY HIGHLIGHTS**



Steps from Collingswood Community Center, Haddon Avenue, Collingswood Farmers Market, and much more.



150' of street frontage provides excellent visibility.



Excellent for dining al fresco and open air retail.



Adjacent to the Boroughs largest surface parking lot, plus 4 off street parking spots for the building.



Walking distance to the PATCO station.



Central Business District (CBD): The purpose of this district is to recognize and encourage traditional downtown shopping and service opportunities within the Borough. Professional and medical offices are permitted on the second level.

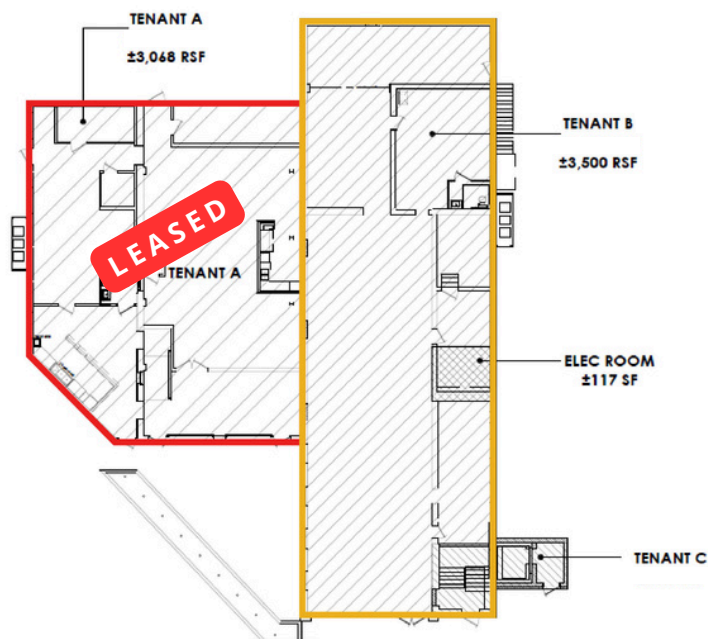
**THE FLYNN COMPANY**

WWW.FLYNNCO.COM | 1621 WOOD STREET, PHILADELPHIA, PA 19103 | 215.561.6565

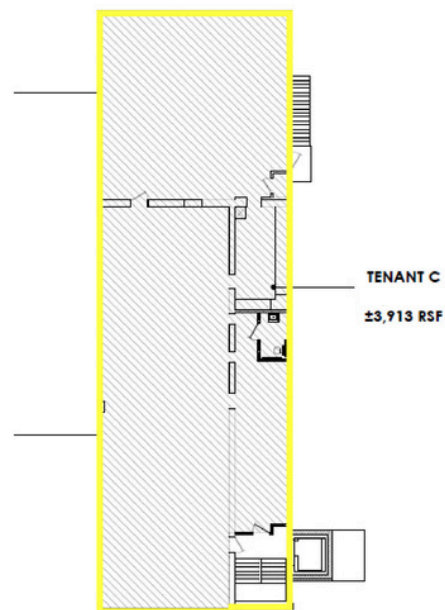


## FLOOR PLAN

### GROUND FLOOR



### 2ND FLOOR



## LOCATION



**For More Information  
Please Contact:**

**DAVID RICCI**  
DRICCI@FLYNNCO.COM  
215-561-6565 X 154

**BRANDO CASALICCHIO**  
BCASALICCHIO@FLYNNCO.COM  
215-561-6565 X 153