

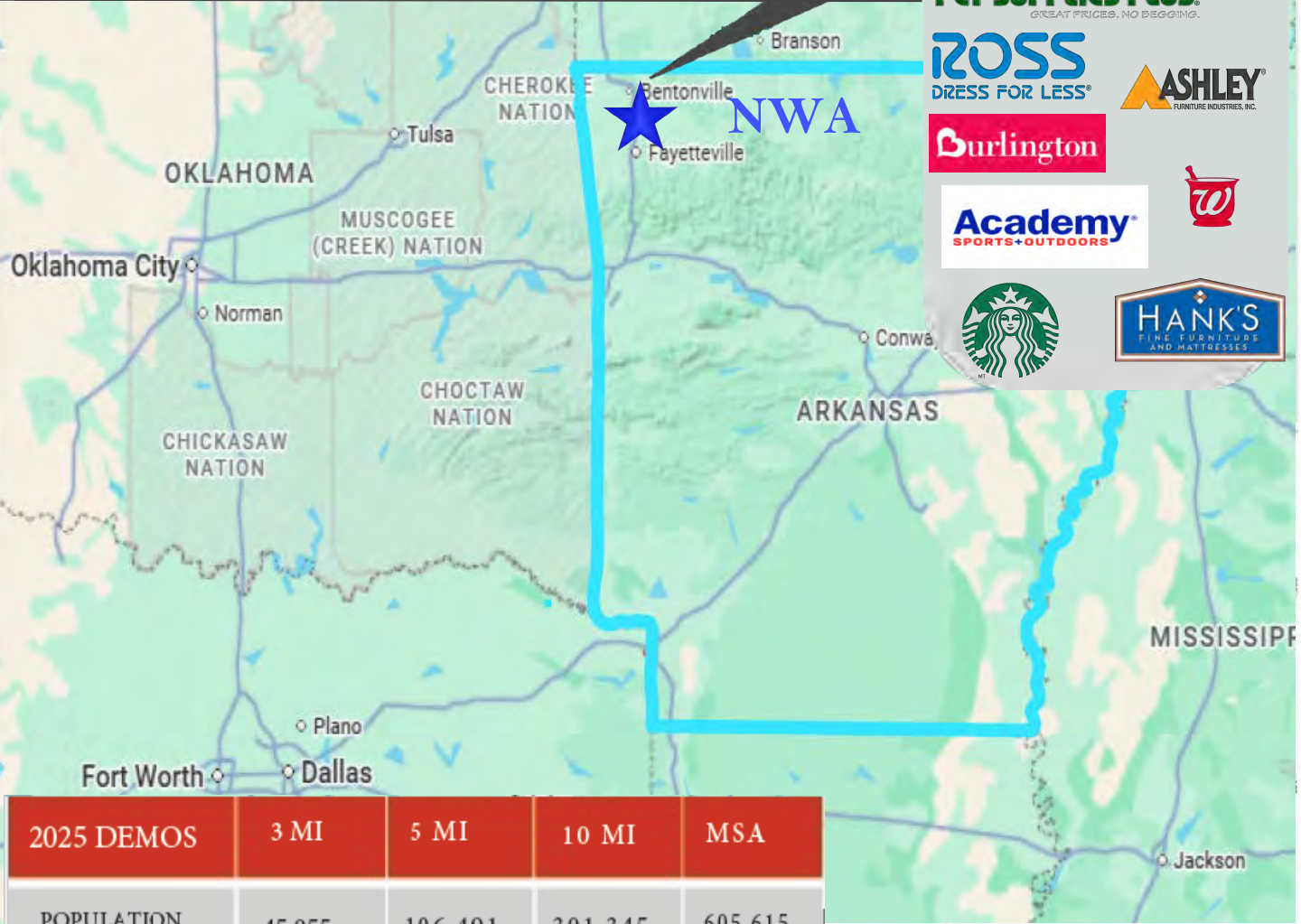
# PLEASANT CROSSING COMMONS

Pleasant Crossing RD & I-49 | Rogers Arkansas

### + Highlights

- Home to the world headquarters of Walmart, Tyson Foods, J.B. Hunt Transport, Sam's Club, and Daisy BB Guns, along with many other multinational corporations and regional retailers.
- One of the fastest-growing metropolitan areas in the nation.
- Features a high-volume Walmart Supercenter.

+A thriving business community  
-come join us!



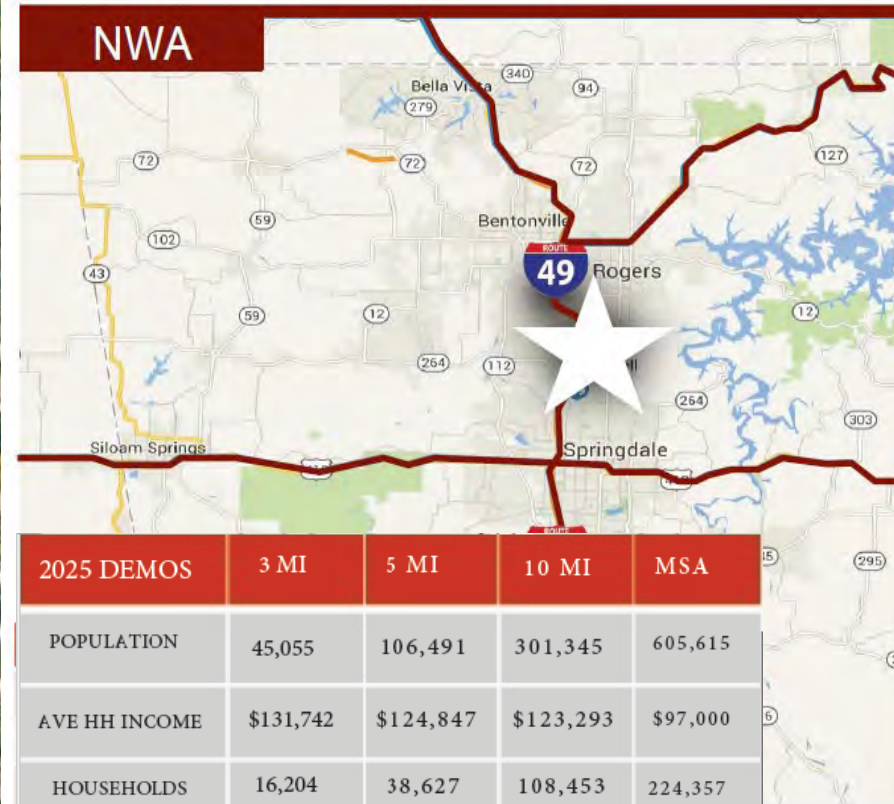
SITTON GROUP  
DEVELOPMENT





# LOCAL MAP

PLEASANT CROSSING RD & I-49 | ROGERS ARKANSAS



**+** JOIN THE FASTEST GROWING REGION IN FOUR-STATE.

- 1 SCOTTSDALE CENTER
- 2 PINNACLE HILLS PROMENADE

**3 PLEASANT CROSSING COMMONS**









**AVAILABLE**

**1,860 sf**

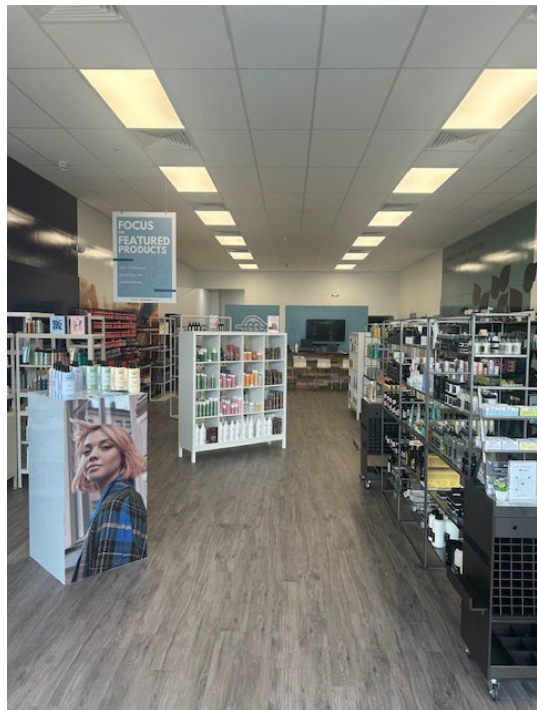
**HOTWORX**

**BARBERSHOP V&S**  
**crumbl**  
**EXO DENTAL**

**WOODSPRING SUITES**  
AN EXTENDED STAY HOTEL

**New Shops  
Coming  
2025  
7,650 sf**





## Pylon B

