



**OFFICE SPACE
FOR LEASE**

**Palm Barstow Professional Center
Two suites available - Move in ready!**

For Further Information Please Contact:

Justin Tancredi
CA DRE #01372876

(559) 449-2424

- 5412 N. Palm Ave: **Suite 101: Approximately 1,150 SF**
Suite 109: Approx. 1,875 SF
- Competitive lease rate; well-managed project
- Excellent location within walking distance to Fig Garden Village

Russell G.
Smith
Inc.

We assume the information contained to be correct. It is obtained from sources which we regard as reliable, but assume no liability for errors or omissions

Palm Barstow Professional Center

Area

The Palm Barstow Professional Center is a meticulously maintained, garden-style office complex located on the Northeast corner of Palm and Barstow Avenues. Hanging signage is available on the building.

Available

5412 N. Palm Ave.

Suite 101: Approx. 1,150 square feet

Suite 109: Approx. 1,875 square feet

Both suites are available February 1, 2024

Lease Rate

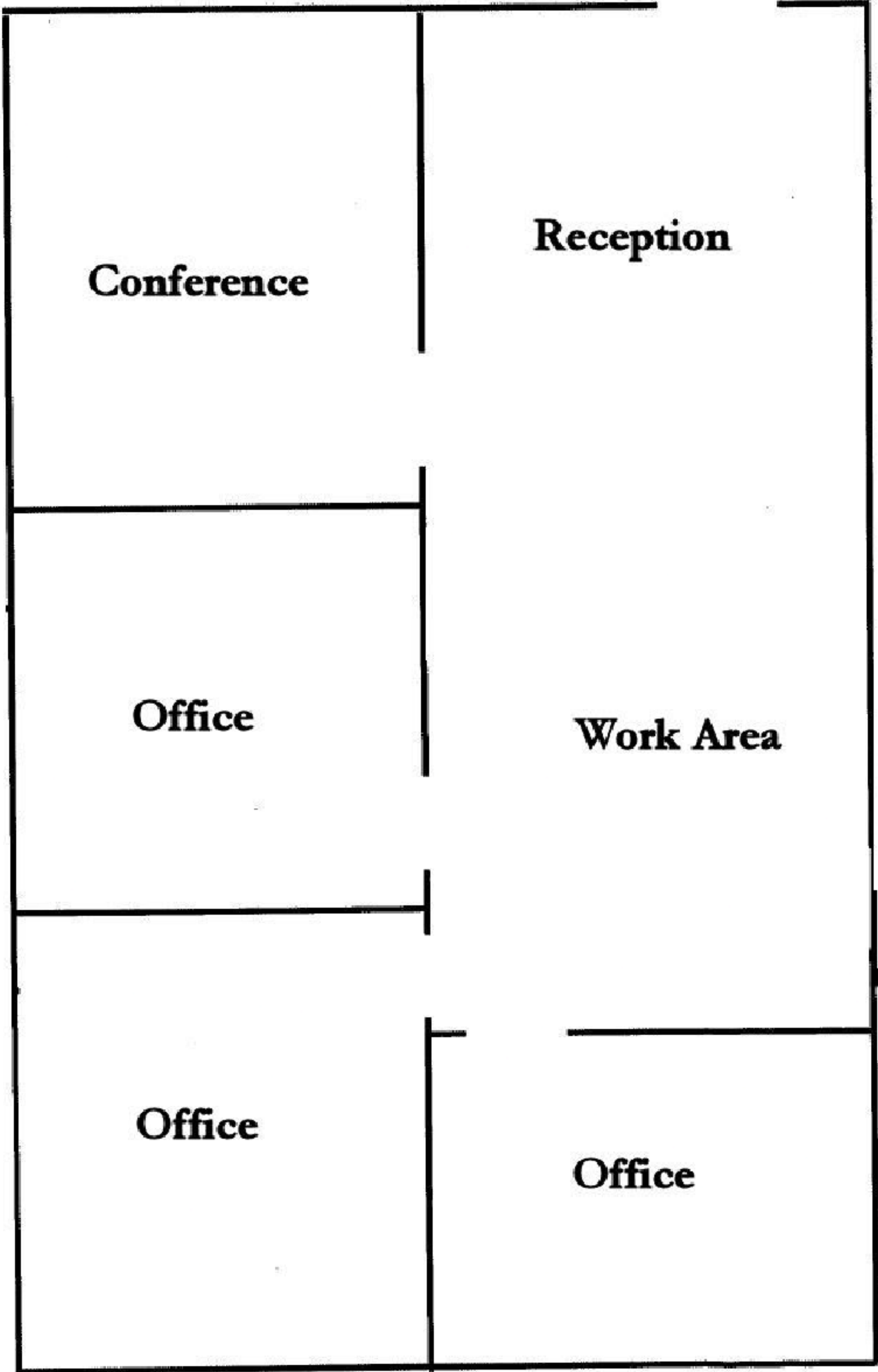
\$1.85 per square foot per month, Modified Gross

Tenant is responsible for their own janitorial and utility expenses

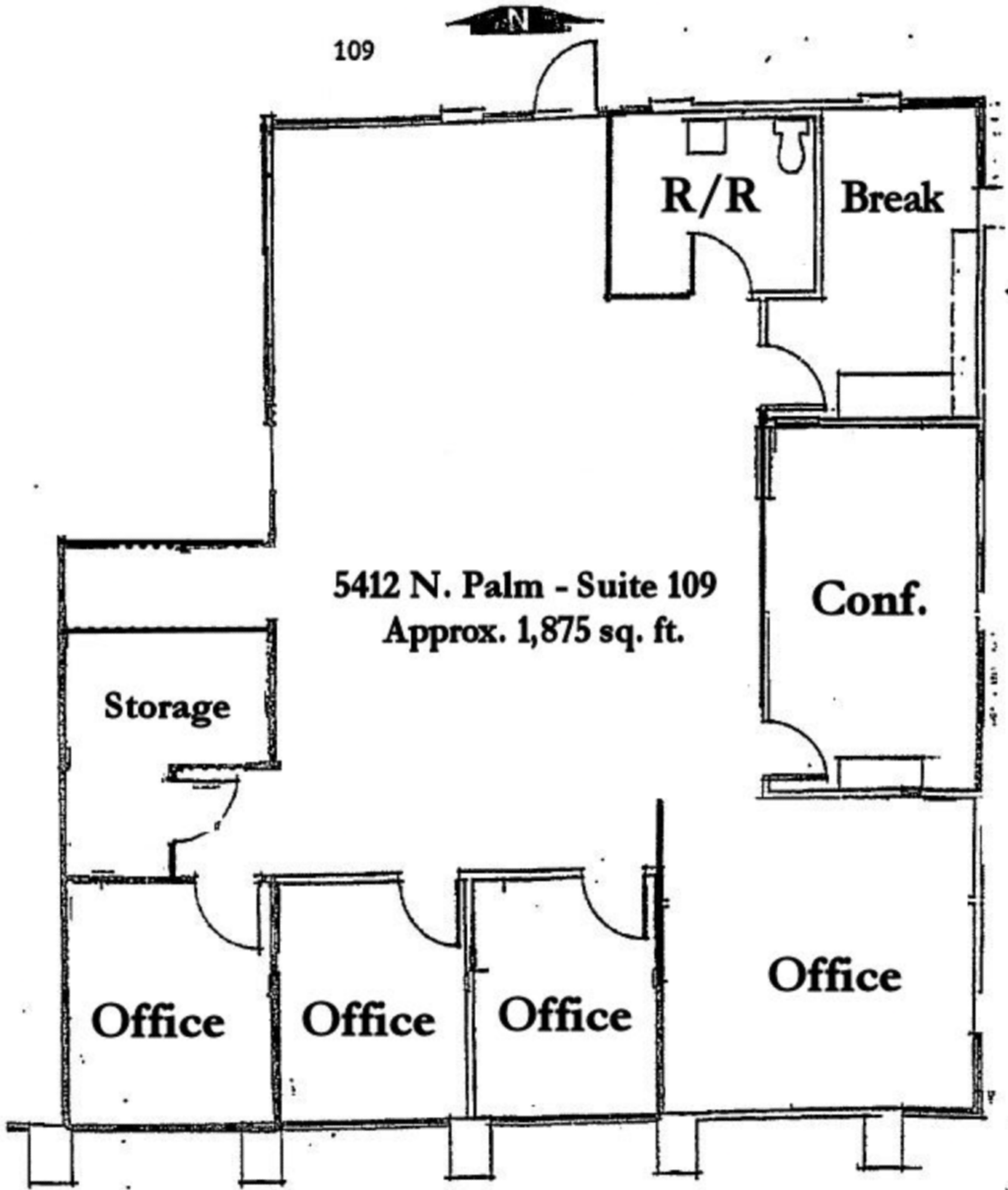
Three percent (3%) annual escalations



5412 N. Palm Avenue Floor Plans



Suite 101
Approx. 1,150 SF



Suite 109
Approx. 1,875 SF

5412 N. Palm Avenue, Suite 109 Interior Photos



Palm Barstow Professional Center Aerial View

