

10200 S U.S. Hwy 1, Port St. Lucie, FL 34952

FORMER BANK
BUILDING - US 1
LIGHTED CORNER



ALEX AYDELOTTE
Broker | Principal
O: 772.223.3646 C: 772.263.1130
E: alex@florida-commercial.net

3,856 SF | Port St. Lucie, FL

309 SE Osceola Street #104 • Stuart, FL 34994 • 772.223.3646 • florida-commercial.net

©Florida Commercial 2021 • This offering is subject to errors, prior to sale/lease, withdrawal, or change in price, terms or conditions without notice.

EXECUTIVE SUMMARY

10200 S U.S. Hwy 1, Port St. Lucie, FL 34952 | FORMER BANK BUILDING – US 1 LIGHTED CORNER

SPECS

Building Size:	3,856 SF
Price:	\$2,195,000
Land Size:	1.50 Acres
Year Built:	1998
Construction:	Reinforced Concrete
Land Use:	CG – City of Port St. Lucie
Zoning:	General Commercial – City of Port St. Lucie

PROPERTY OVERVIEW

Former Bank Building at the Premier Hard Corner of US 1 and Jennings Road in Port St. Lucie, FL, one of the Nation's Fastest Growing Cities! Bank Building features 3,856 SF with dual Drive-Thru Lanes, ideally positioned on an Oversized 1.50 Acre Parcel with a Huge Parking Lot. Parcel sits as an outparcel to a 114,000 SF Retail Center recently redeveloped with a Crunch Fitness and is in close proximity to numerous additional National Retailers and QSR Tenants. Strong AADT Traffic Counts of 43,500 (US 1) and 5,300 (Jennings Road). Priced to sell below Replacement Cost in a market Exploding with Growth!



ALEX AYDELOTTE
Broker | Principal
O: 772.223.3646 C: 772.263.1130
E: alex@florida-commercial.net

3,856 SF | **Port St. Lucie, FL**



ALEX AYDELOTTE
 Broker | Principal
 O: 772.223.3646 C: 772.263.1130
 E: alex@florida-commercial.net

3,856 SF

Port St. Lucie, FL

309 SE Osceola Street #104 • Stuart, FL 34994 • 772.223.3646 • florida-commercial.net

©Florida Commercial 2021 • This offering is subject to errors, prior to sale/lease, withdrawal, or change in price, terms or conditions without notice.



ALEX AYDELOTTE
Broker | Principal
O: 772.223.3646 C: 772.263.1130
E: alex@florida-commercial.net

3,856 SF | **Port St. Lucie, FL**



ALEX AYDELOTTE
 Broker | Principal
 O: 772.223.3646 C: 772.263.1130
 E: alex@florida-commercial.net

3,856 SF | **Port St. Lucie, FL**

309 SE Osceola Street #104 • Stuart, FL 34994 • 772.223.3646 • florida-commercial.net

©Florida Commercial 2021 • This offering is subject to errors, prior to sale/lease, withdrawal, or change in price, terms or conditions without notice.



ALEX AYDELOTTE
 Broker | Principal
 O: 772.223.3646 C: 772.263.1130
 E: alex@florida-commercial.net

3,856 SF

Port St. Lucie, FL

309 SE Osceola Street #104 • Stuart, FL 34994 • 772.223.3646 • florida-commercial.net

©Florida Commercial 2021 • This offering is subject to errors, prior to sale/lease, withdrawal, or change in price, terms or conditions without notice.

MAP & REPORT

10200 S U.S. Hwy 1, Port St. Lucie, FL 34952 | FORMER BANK BUILDING – US 1 LIGHTED CORNER



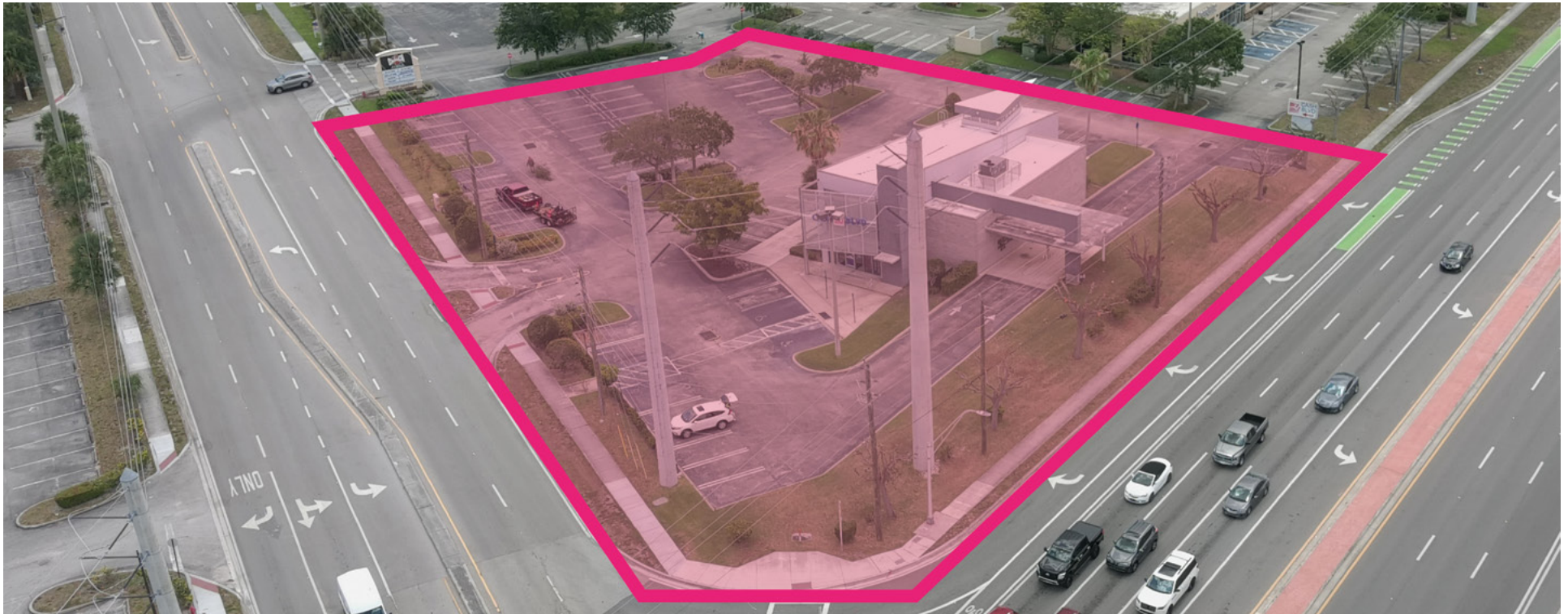
POPULATION

	1 MILE	3 MILES	5 MILES
Population	24.5K	73.6K	175K
Median age	43	48	46



HOUSEHOLDS & INCOME

	1 MILE	3 MILES	5 MILES
Total households	11,370	29.5K	68.1K
# of Employees	20.4K	61.7K	146K
Average HH income	\$64.3K	\$65K	\$70.2K



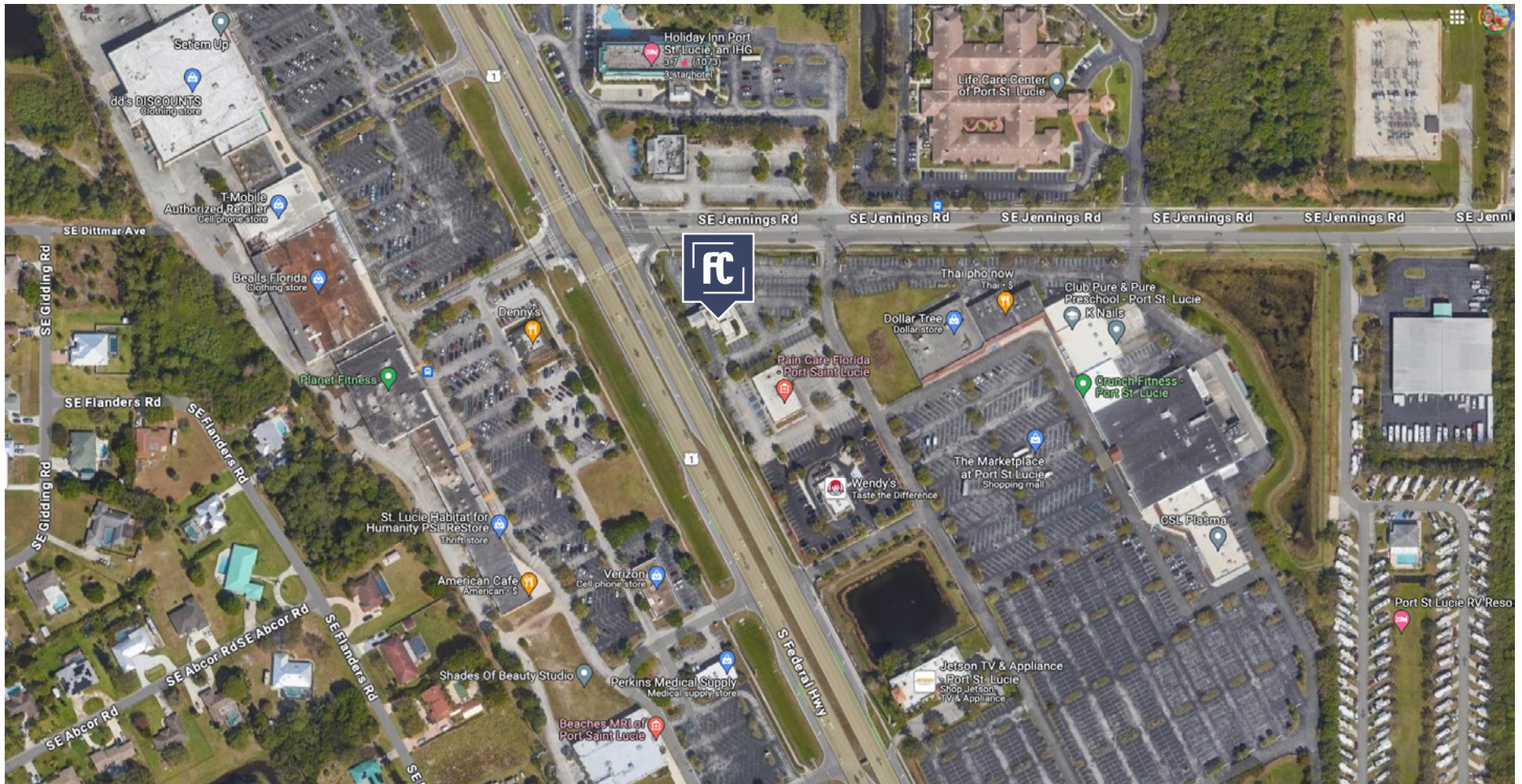
ALEX AYDELOTTE
Broker | Principal
O: 772.223.3646 C: 772.263.1130
E: alex@florida-commercial.net

3,856 SF

Port St. Lucie, FL

LOCATION

10200 S U.S. Hwy 1, Port St. Lucie, FL 34952 | FORMER BANK BUILDING – US 1 LIGHTED CORNER



ALEX AYDELOTTE
Broker | Principal
O: 772.223.3646 C: 772.263.1130
E: alex@florida-commercial.net

3,856 SF | Port St. Lucie, FL