

# ±15.32 ACRES OF LAND

## WILLIS, TX



**KRISTEN MCDADE**

*Managing Director*

+1 713 331 1796

[kristen.mcdade@cushwake.com](mailto:kristen.mcdade@cushwake.com)

**MATTHEW DAVIS**

*Senior Director*

+1 713 331 1798

[matthew.davis@cushwake.com](mailto:matthew.davis@cushwake.com)

**MELISSA ELIZONDO**

*Brokerage Specialist*

+1 346 396 4008

[melissa.elizondo@cushwake.com](mailto:melissa.elizondo@cushwake.com)

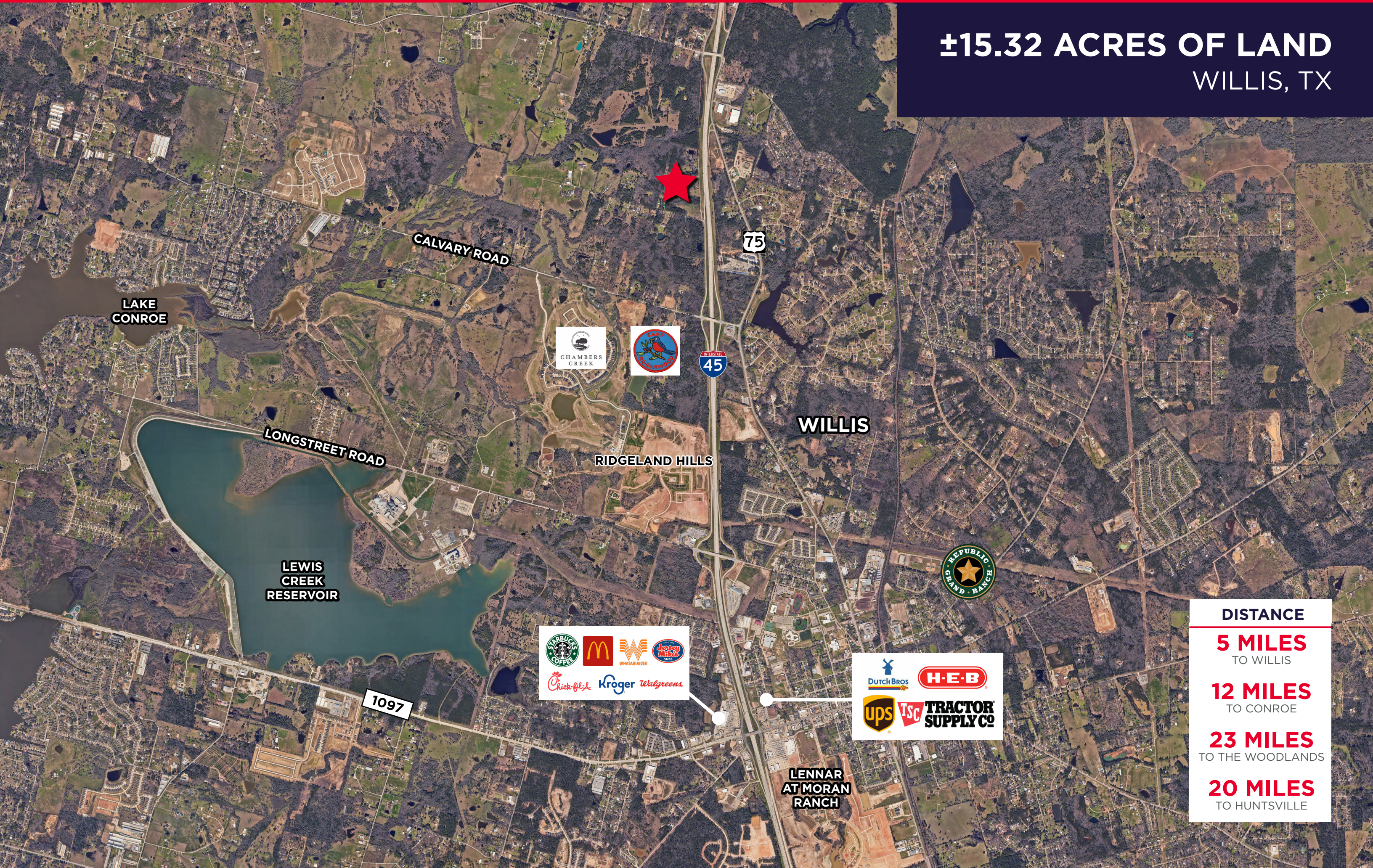
 **CUSHMAN & WAKEFIELD**

1330 Post Oak Boulevard, Suite 2600, Houston, TX  
[www.cushmanwakefield.com](http://www.cushmanwakefield.com)



# ±15.32 ACRES OF LAND

WILLIS, TX



CALVARY ROAD

75

LAKE CONROE



45

WILLIS

LONGSTREET ROAD

RIDGELAND HILLS

LEWIS CREEK RESERVOIR



LENNAR AT MORAN RANCH

1097

DISTANCE

**5 MILES**  
TO WILLIS

**12 MILES**  
TO CONROE

**23 MILES**  
TO THE WOODLANDS

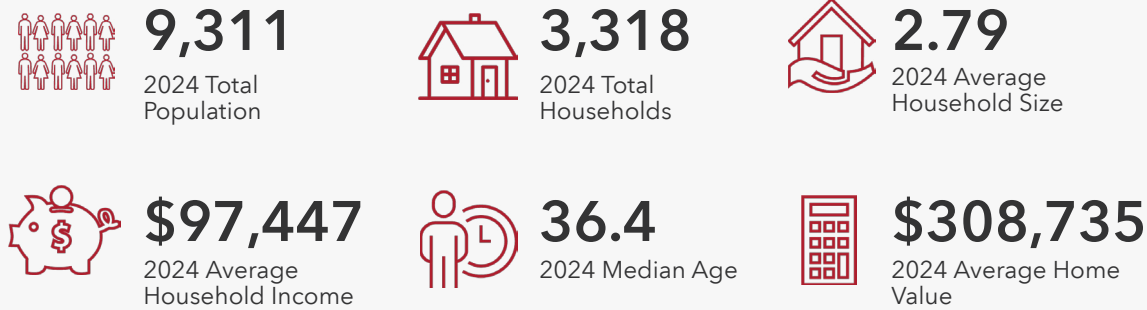
**20 MILES**  
TO HUNTSVILLE



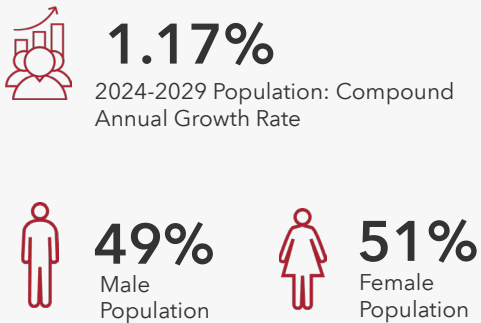
# DEMOGRAPHICS

±15.32 Acres Of Land | Willis, TX 77006  
3 miles

## HOUSEHOLDS



## POPULATION



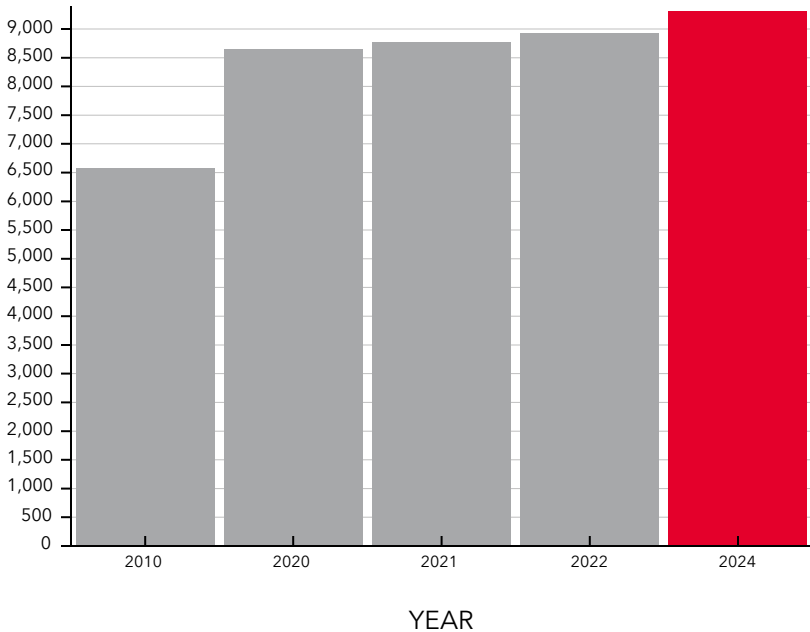
## EMPLOYMENT



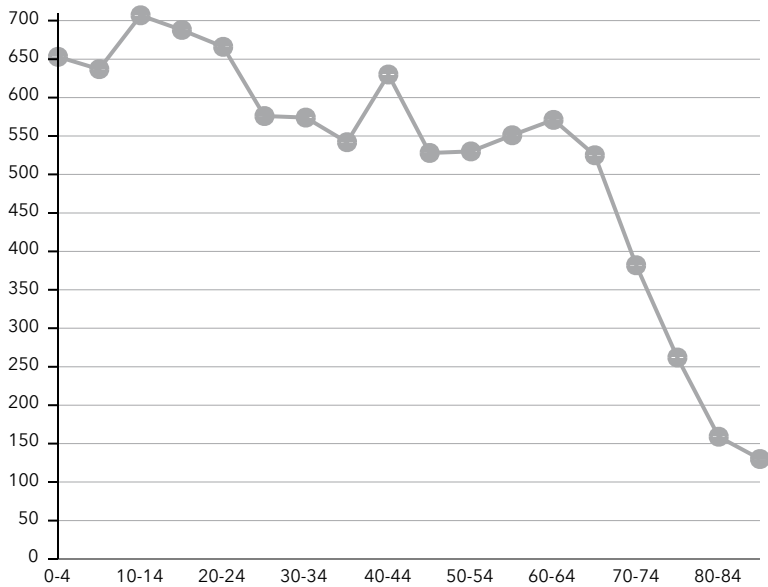
## EDUCATIONAL ATTAINMENT



## POPULATION TIME SERIES 2010-2024



## POPULATION BY AGE GROUP







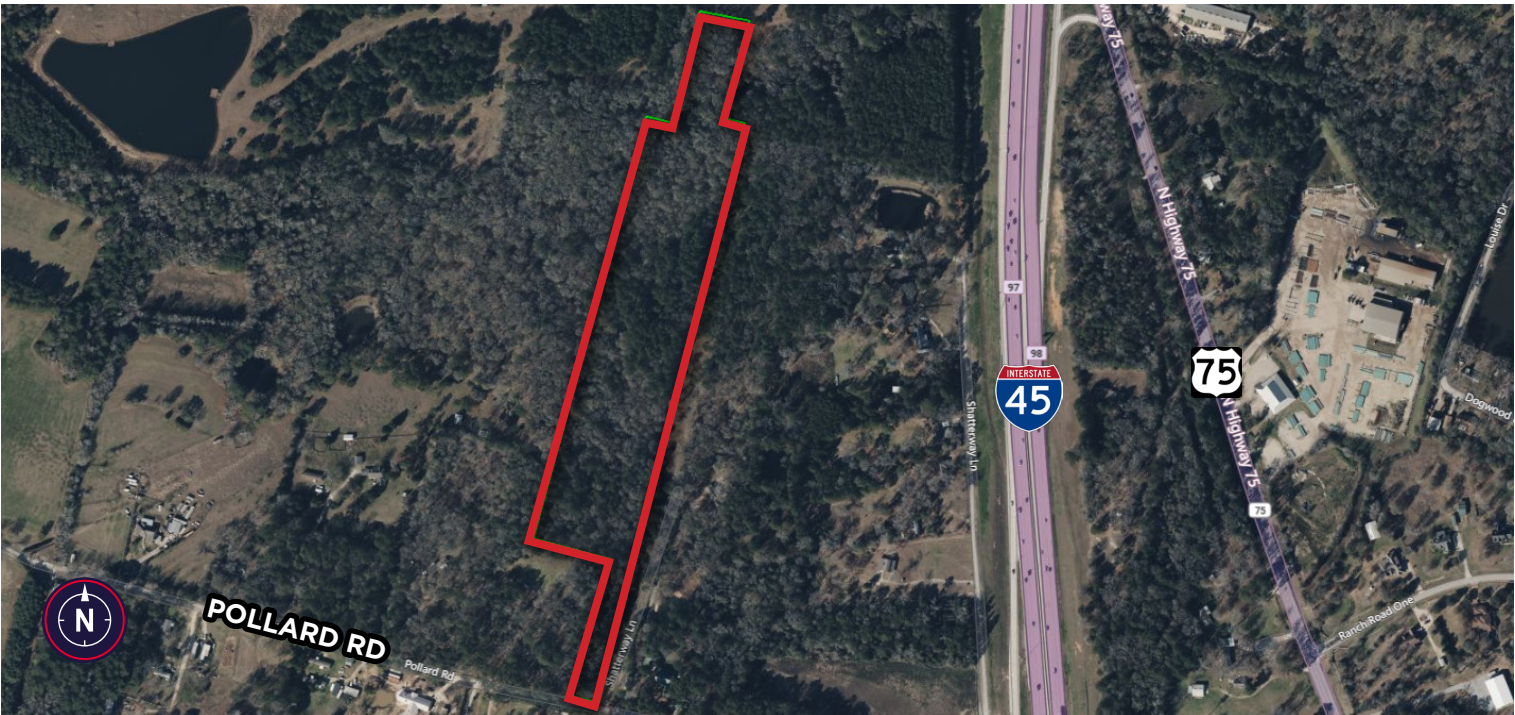
POLLARD ROAD





# ±15.32 ACRES OF LAND

## WILLIS, TX



±15.32-acres of land situated on Pollard Road in Willis, Montgomery County, Texas. The site is just 5 miles north of the thriving city of Willis, TX, with direct access to I-45, making it a convenient location. The undeveloped land provides a variety of potential uses, commercial development, residential development, or other ventures. The natural surroundings and strategic location provide connectivity to nearby amenities, such as Lake Conroe, the newly developed HEB anchored at I-45 and FM 1097, and Sam Houston National Forest. With the continued growth of the Willis area, this site provides a picturesque landscape and tranquil atmosphere near local communities.

Contact Broker for pricing

**KRISTEN MCDADE**  
Managing Director  
+1 713 331 1796  
kristen.mcdade@cushwake.com

**MATTHEW DAVIS**  
Senior Director  
+1 713 331 1978  
matthew.davis@cushwake.com

**MELISSA ELIZONDO**  
Brokerage Specialist  
+1 346 396 4008  
melissa.elizondo@cushwake.com

**CUSHMAN & WAKEFIELD**  
1330 Post Oak Boulevard, Suite 2600, Houston, TX  
www.cushmanwakefield.com

©2025 Cushman & Wakefield. All rights reserved. The information contained in this communication is strictly confidential. This information has been obtained from sources believed to be reliable but has not been verified. NO WARRANTY OR REPRESENTATION, EXPRESS OR IMPLIED, IS MADE AS TO THE CONDITION OF THE PROPERTY (OR PROPERTIES) REFERENCED HEREIN OR AS TO THE ACCURACY OR COMPLETENESS OF THE INFORMATION CONTAINED HEREIN, AND SAME IS SUBMITTED SUBJECT TO ERRORS, OMISSIONS, CHANGE OF PRICE, RENTAL OR OTHER CONDITIONS, WITHDRAWAL WITHOUT NOTICE, AND TO ANY SPECIAL LISTING CONDITIONS IMPOSED BY THE PROPERTY OWNER(S). ANY PROJECTIONS, OPINIONS OR ESTIMATES ARE SUBJECT TO UNCERTAINTY AND DO NOT SIGNIFY CURRENT OR FUTURE PROPERTY PERFORMANCE.