

# FOR SALE

512 Clark, St. Charles, MO, 63301



## PROPERTY SUMMARY

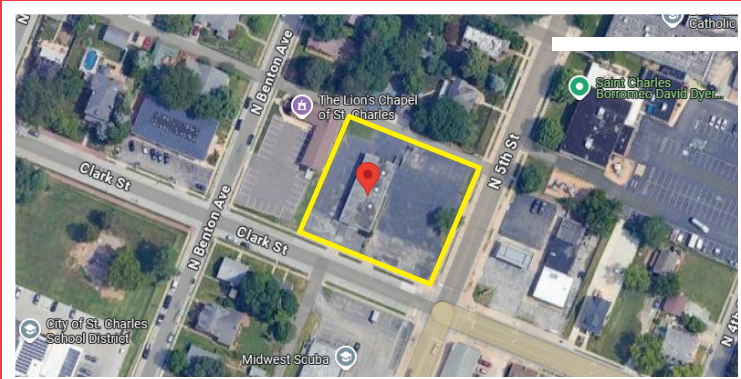
### PRIME CORNER LOT

- 0.75 acre lot
- 4,545 sf Building
- Potential Redevelopment
- Clear span building
- Has a floor drain
- Corner lot just blocks away from proposed new City Hall, Historic Main St, Government Center and Hospital.

• **SALE PRICE: \$950,000**

### Directions:

I-70 to North on 5th St or MO-370 to East on MO-94 to North on Little Hills Expwy to West on Mel Weller Pkwy (5th St.).



*Listing Agent* **Danny Kluesner**



*Cell* **314-712-0055**



**kluesner@shockleycommercial.com**



501 First Capital Dr. Suite 5,  
St. Charles MO 63301



*Office* **636-946-9753**



**www.shockleycommercial.com**