

# 501 UNION STREET

DOWNTOWN OFFICE SUITES FOR LEASE



**R. Stephen Prather**  
First Vice President

O: 615.345.7254  
sprather@charleshawkinsco.com

**Brents Herron**  
Vice President

C: 615.485.4538  
brherron@charleshawkinsco.com

2920 Berry Hill Dr., Ste 100  
Nashville, TN 37204  
P: 615.256.3189  
www.charleshawkinsco.com

**CHARLES  
HAWKINS CO.**

## Property Highlights

Seven Story Office Building

---

Diverse Suite Size Ranges: 694 – 3,528 SF

---

Prime Downton Nashville Location

---

Competitive Rates

---

24-Hour Access

---

Walking distance to a myriad of retail,  
dining, and entertainment options

---

Excellent proximity to the State Capitol and  
Nashville Courthouse



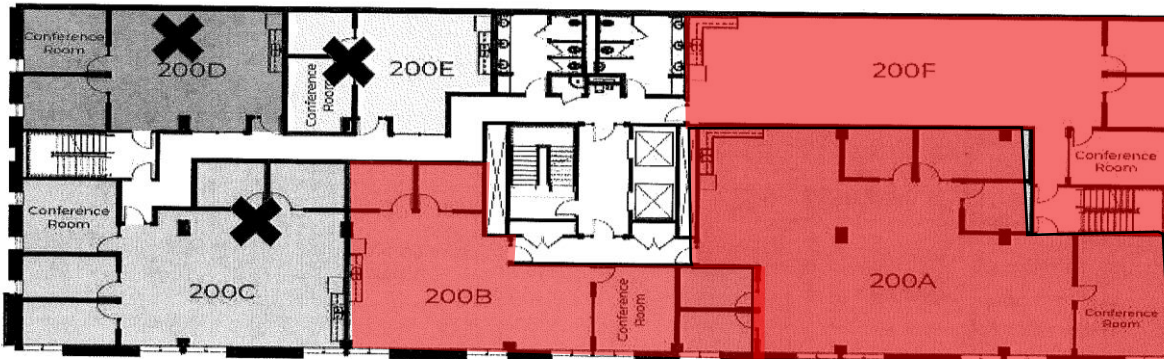
# 501 UNION STREET

CHARLES  
HAWKINS CO.

2<sup>nd</sup> FLOOR FLOOR PLAN

## Office Suites

2nd Floor Suites



# 501

2<sup>nd</sup> FLOOR AVAILABILITIES

Suite 200A: 3,528 SF

Suite 200B: 1,612 SF

Suite 200F: 2,256 SF

LEASE RATES: \$18-25/SF FSG

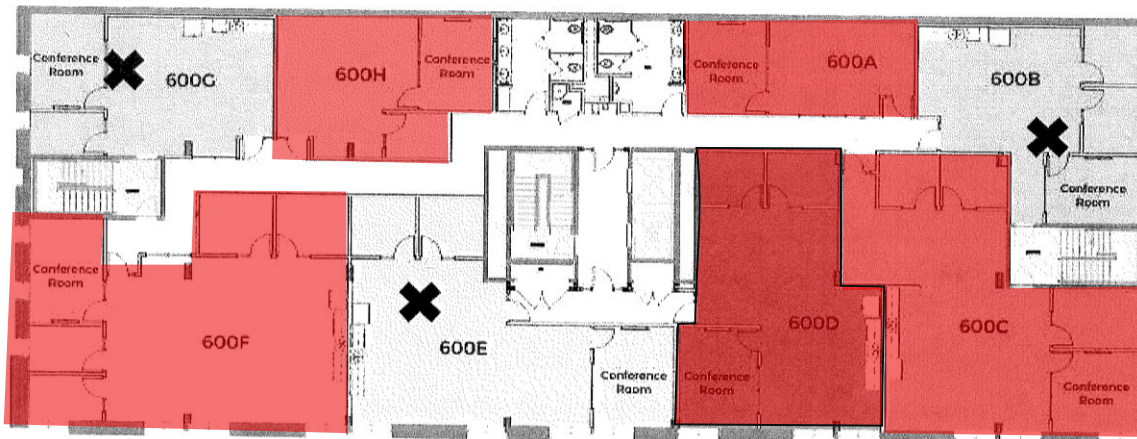


# 501 UNION STREET

CHARLES  
HAWKINS CO.

6<sup>th</sup> FLOOR FLOOR PLAN

## Office Suites



# 501

6<sup>th</sup> FLOOR AVAILABILITIES

Suite 600A: 694 SF

Suite 600C: 1,974 SF

Suite 600D: 1,612 SF

Suite 600F: 2,137 SF

Suite 600H: 885 SF

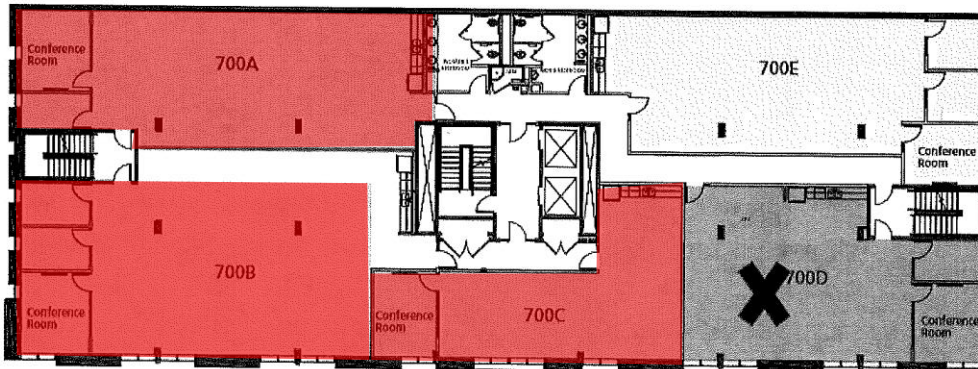
LEASE RATES: \$18-25/SF FSG



## 7<sup>th</sup> FLOOR FLOOR PLAN

## Office Suites

7TH FLOOR



700A = 2,319 SF   700B = 3,250 SF   700C = 1,491 SF   700D = 2,025 SF   700E = 2,355 SF

# 501

## 7<sup>th</sup> FLOOR AVAILABILITIES

Suite 700A: 2,319 SF

Suite 700B: 3,250 SF

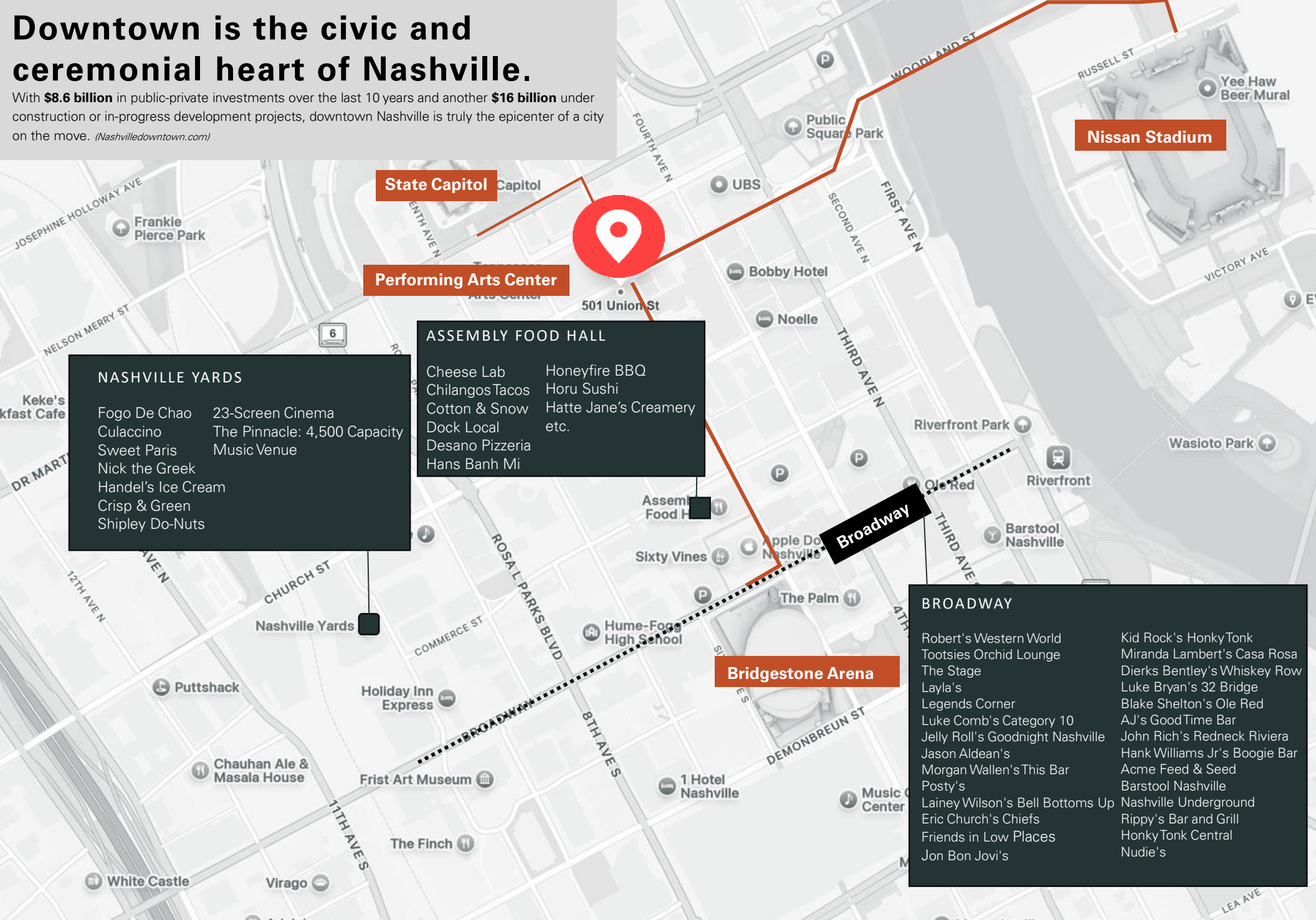
Suite 700C: 1,491 SF

LEASE RATES: \$18-25/SF FSG



# Downtown is the civic and ceremonial heart of Nashville.

With **\$8.6 billion** in public-private investments over the last 10 years and another **\$16 billion** under construction or in-progress development projects, downtown Nashville is truly the epicenter of a city on the move. *(Nashvilledowntown.com)*



**State Capitol** Capitol

**Performing Arts Center**

**Nissan Stadium**

**NASHVILLE YARDS**

Fogo De Chao	23-Screen Cinema
Culaccino	The Pinnacle: 4,500 Capacity
Sweet Paris	Music Venue
Nick the Greek	
Handel's Ice Cream	
Crisp & Green	
ShIPLEY Do-Nuts	

**ASSEMBLY FOOD HALL**

Cheese Lab	Honeyfire BBQ
Chilangos Tacos	Horu Sushi
Cotton & Snow	Hatte Jane's Creamery
Dock Local	etc.
Desano Pizzeria	
Hans Banh Mi	

**Broadway**

**Bridgestone Arena**

**BROADWAY**

Robert's Western World	Kid Rock's HonkyTonk
Tootsies Orchid Lounge	Miranda Lambert's Casa Rosa
The Stage	Dierks Bentley's Whiskey Row
Layla's	Luke Bryan's 32 Bridge
Legends Corner	Blake Shelton's Ole Red
Luke Comb's Category 10	AJ's GoodTime Bar
Jelly Roll's Goodnight Nashville	John Rich's Redneck Riviera
Jason Aldean's	Hank Williams Jr's Boogie Bar
Morgan Wallen's This Bar	Acme Feed & Seed
Posty's	Barstool Nashville
Lainey Wilson's Bell Bottoms Up	Nashville Underground
Eric Church's Chiefs	Rippy's Bar and Grill
Friends in Low Places	HonkyTonk Central
Jon Bon Jovi's	Nudie's

## HEART OF DOWNTOWN NASHVILLE

501 Union benefits from its immediate proximity the State Capitol and Courthouse, and the Tennessee Performing Arts Center. The property is within walking distance to some of Nashville's most eclectic bars and restaurants, Ryman Auditorium, Bridgestone Area, and the brand new Titans' stadium.

# 501 UNION STREET

**NASHVILLE CBD**

**R. Stephen Prather**  
First Vice President  
O: 615.345.7254  
sprather@charleshawkinsco.com

**Brents Herron**  
Vice President  
C: 615.485.4538  
brherron@charleshawkinsco.com

2920 Berry Hill Dr., Ste 100  
Nashville, TN 37204  
P: 615.256.3189  
www.charleshawkinsco.com

**CHARLES  
HAWKINS CO.**