

# 3611 Motor Ave., Los Angeles

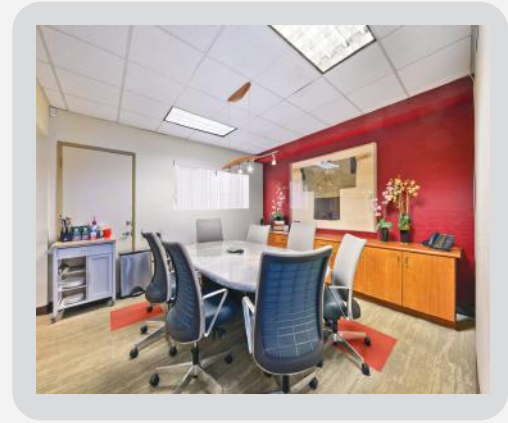
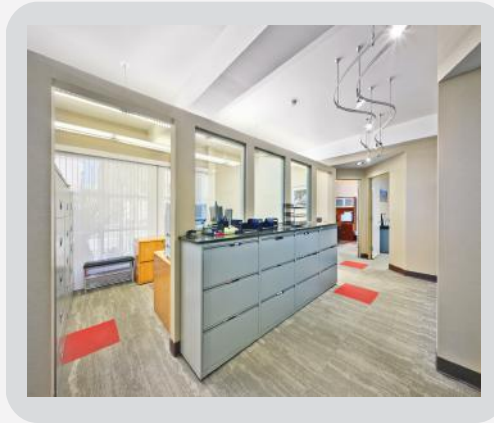
## 2,662 SF Office for Sub-Lease, Suite 100



Located in one of the nicest buildings in the Motor Ave. area  
Minutes from the Santa Monica Freeway  
Beautiful and relaxing courtyard views from private offices  
Kitchenette and two (2) private restrooms  
Available Immediately  
Substantially Renovated in 2022

\* PREMISES: 2,662 Square Feet  
\* RENT: \$2.25 SF MG Per Month  
\* Near Sony Studios

\* TERM: To 3/31/2027  
\* PARKING: 4 Spaces / \$80 per mo./per space  
\* Excellent for Creative Office



CONTACT: Tom Walsmith  
Direct: (310) 204-4040  
tomwalsmith@gmail.com

**CommercialPropertyGroup**  
10020 National Blvd., Ste. B  
Los Angeles, CA 90034