

# WALTON RANCH 80 AC FARMGROUND 40,000 SF GREENHOUSE WITH WELL

OPPORTUNITY  
ZONE

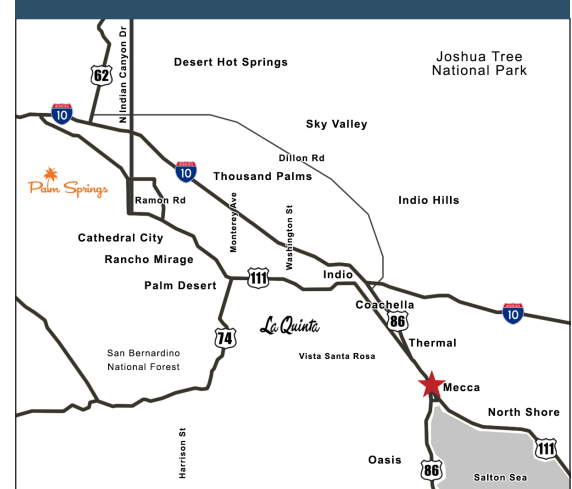
93-751 71ST AVE, MECCA, CA

## FEATURES

- Greenhouse consists of:
  - 6,000 SF propagation house
  - 34,000 SF main green-house
  - 13 walk-in green-house tunnels
- Mobile home for care taker
- Warm micro-climate proximity to Salton Sea
- Additional 65 acres farmland with reservoir to expand
- In Ag Preserve, keeps property taxes low

**PRICE: \$1,280,000 (\$16,000/AC)**

## COACHELLA VALLEY



## VICINITY MAP

**DESERT PACIFIC  
PROPERTIES**

5/23/25 JC



**SUSAN HARVEY**

DRE #00957590

susan@dppllc.com

Cell: 760.250.8992



**EMILY HARVEY**

DRE #02229612

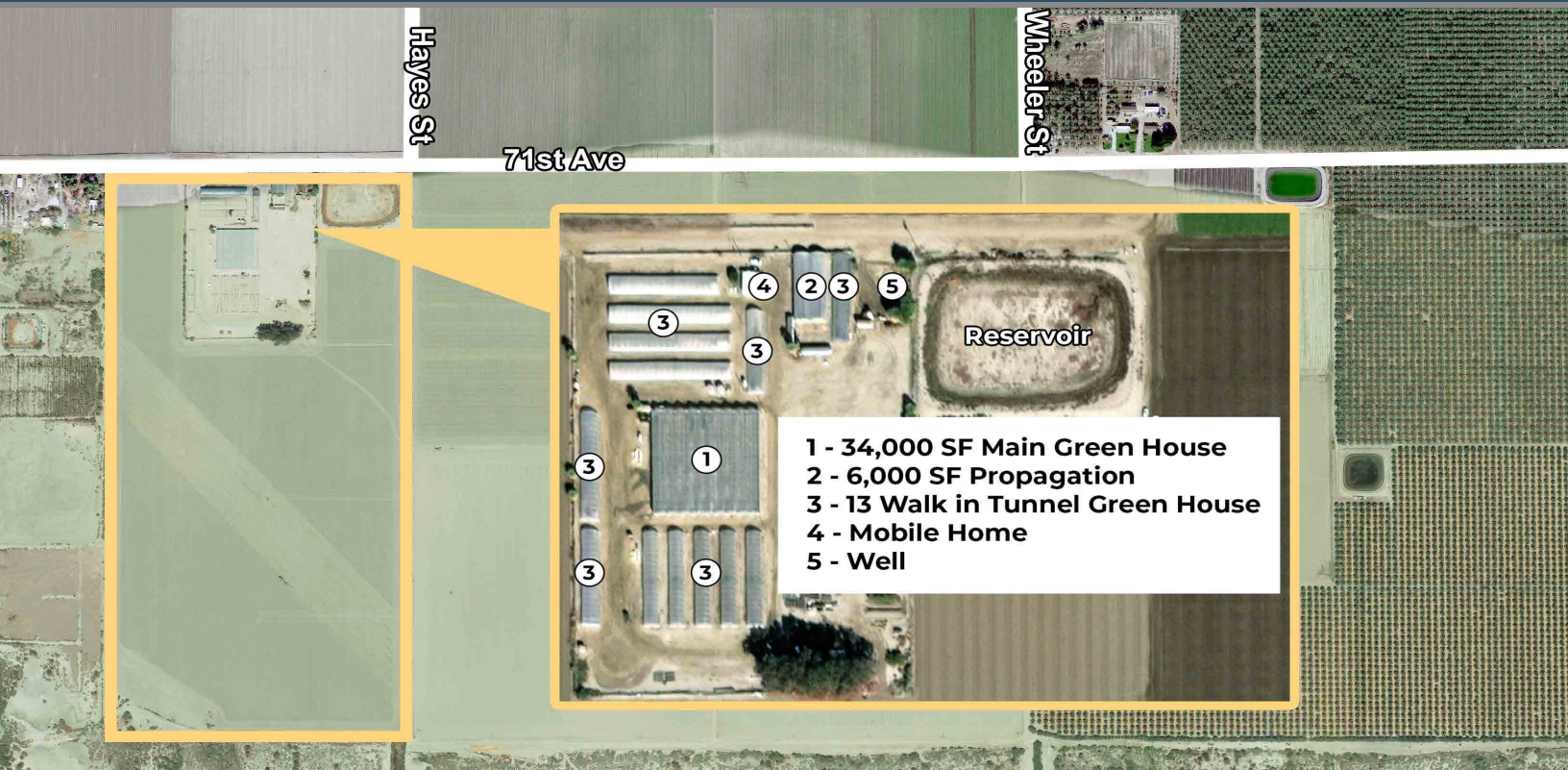
emily@dppllc.com

Cell: 760.636.3500

**DesertPacificProperties.com 760.360.8200**

# 80 AC FARMGROUND WITH GREENHOUSES

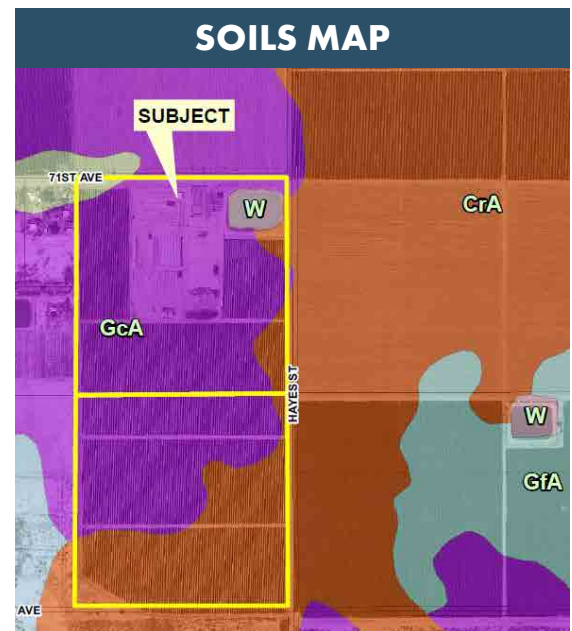
## AERIAL SITE PLAN



**Directions:** Take Expressway 86 to Avenue 66 and turn left (east) on Avenue 66. Turn right (south) on to Highway 111 (Grapefruit Blvd) and travel 4 miles to Hayes St. Turn right (south) on. Property is at the southwest corner of 71 st and Hayes St.

## SITE AMENITIES

- **Location:** The property is located at the south west corner of 71 st Avenue & Hayes Street in Mecca
- **APNs/Parcel Sizes:** 729-120-017 (40 AC), 019 (40 AC)
- **Zoning:** [Click here to view A-1-20 \(Light Agriculture, 20 AC min.\), W-1 \(Watercourse, Watershed & Conservation Areas\)](#)
- **General Plan:** [Click here to view AG \(Agriculture\), OS-W \(Open Space, Water\)](#)
- **Soils:** GcA (Gilman fine sandy loam, wet, 0-2% slopes), CrA (Coachella fine sand, wet, 0-2% slopes)
- **Ag Preserve:** Yes
- **Irrigation Meter #:** 2908 (Serves only APN 729-120-017)
- **Utilities:** 3 Phase power, well, canal water for farm land
- **Tiled:** Yes, TD-561
- **Elevation:** -200 to -220
- **Comments:** Great agricultural opportunity with greenhouse nursery operation in the Coachella Opportunity Zone. Priced to sell.



760.360.8200 | [DesertPacificProperties.com](http://DesertPacificProperties.com) | 44267 Monterey Ave, Ste. A, Palm Desert, CA 92260

Disclaimer: The information provided has been obtained from sources believed reliable. While we do not doubt its accuracy, we have not verified it and make no guarantee, warrant or representation about it. Buyer is strongly encouraged to independently confirm its accuracy and completeness. Any projections, opinions assumptions or estimates used are for example only, and may not accurately represent the current or future performance of the property.