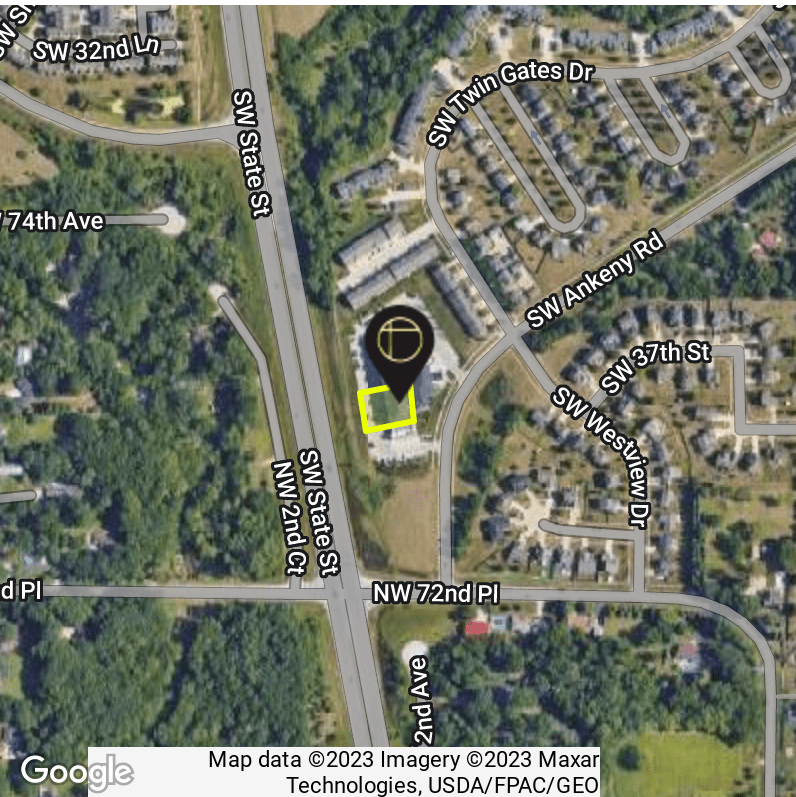


Skyline Lofts Commercial

1680 SW Ankeny Rd #2D, Ankeny, IA 50023



PROPERTY DESCRIPTION

Professional office space with four private offices, conference room, front reception area, break area with kitchenette, and bull pen. Updated finishes and modern feel throughout! Excellent visibility to 2nd Ave and convenient access to I-80 and Ankeny.

OFFERING SUMMARY

Lease Rate:	\$3,000.00 per month (NNN)
Available SF:	1,422 SF

DEMOGRAPHICS	0.25 MILES	0.5 MILES	1 MILE
Total Households	269	1,158	3,258
Total Population	731	3,020	8,443
Average HH Income	\$106,154	\$101,978	\$102,605

Map data ©2023 Imagery ©2023 Maxar Technologies, USDA/FPAC/GEO

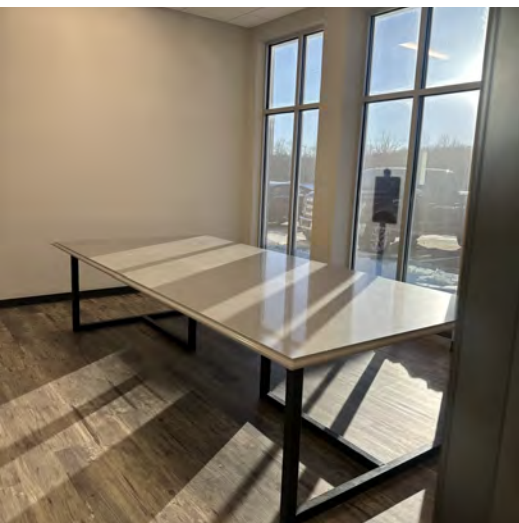
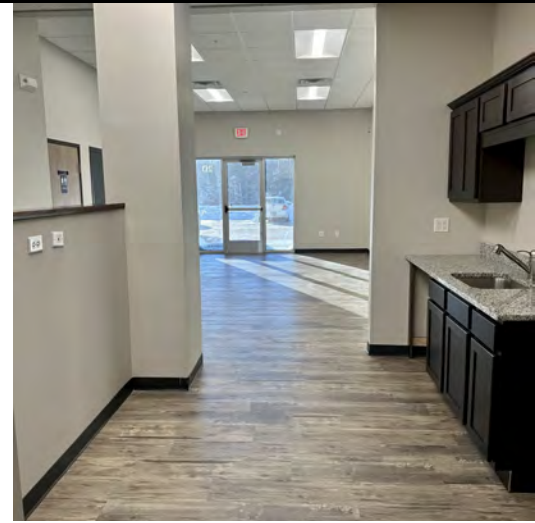
OFFICE BUILDING FOR LEASE

Skyline Lofts Commercial

1680 SW Ankeny Rd #2D, Ankeny, IA 50023



CALIBER
REALTY



Justin Washburn 515-238-4528
Julianah Loutsch 515-249-9260

| Licensed by the State of Iowa

| caliberiowa.com

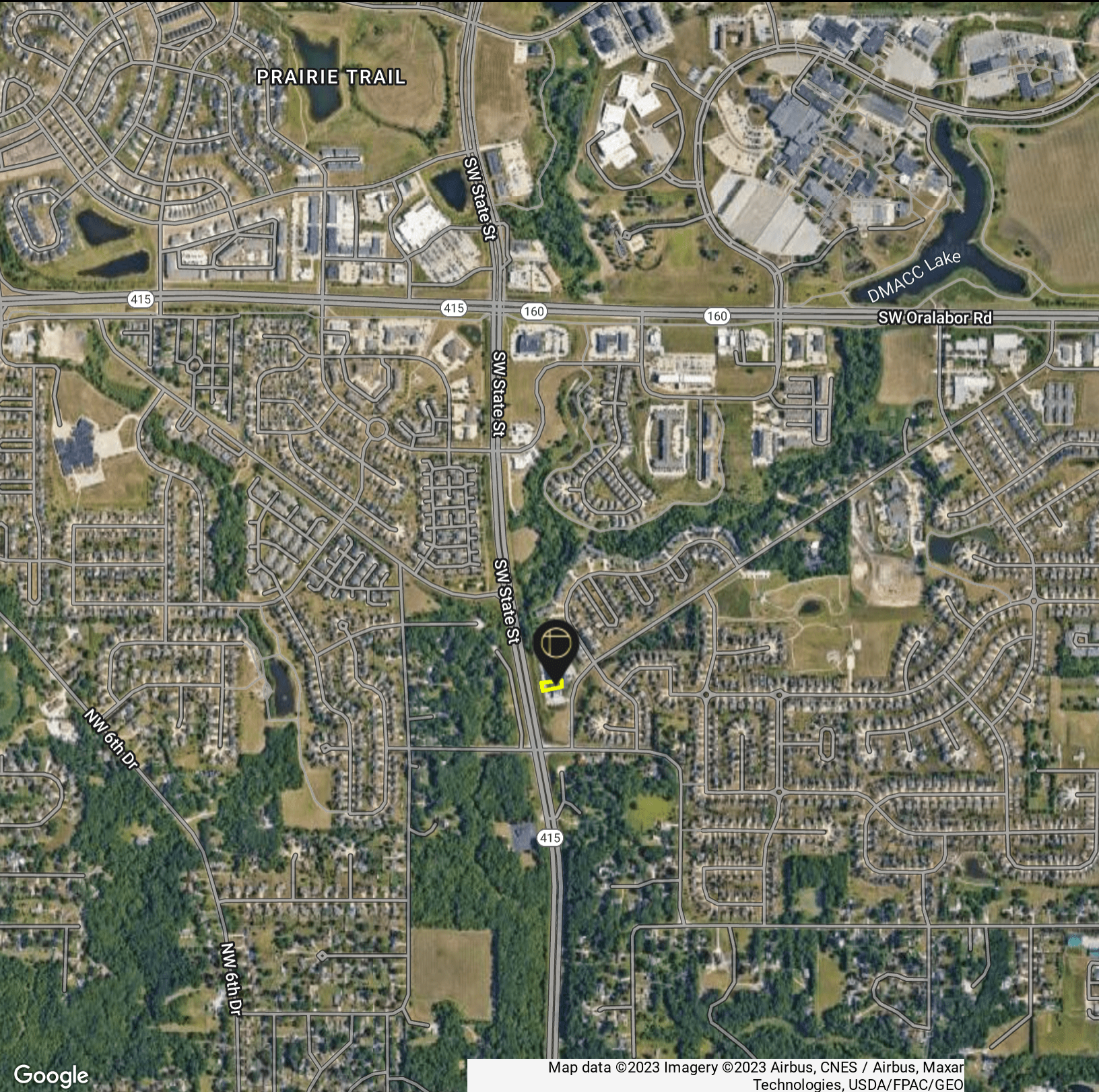
OFFICE BUILDING FOR LEASE

Skyline Lofts Commercial

1680 SW Ankeny Rd #2D, Ankeny, IA 50023



CALIBER
REALTY



Google

Map data ©2023 Imagery ©2023 Airbus, CNES / Airbus, Maxar Technologies, USDA/FPAC/GEO

Justin Washburn 515-238-4528
Julianah Loutsch 515-249-9260

| Licensed by the State of Iowa

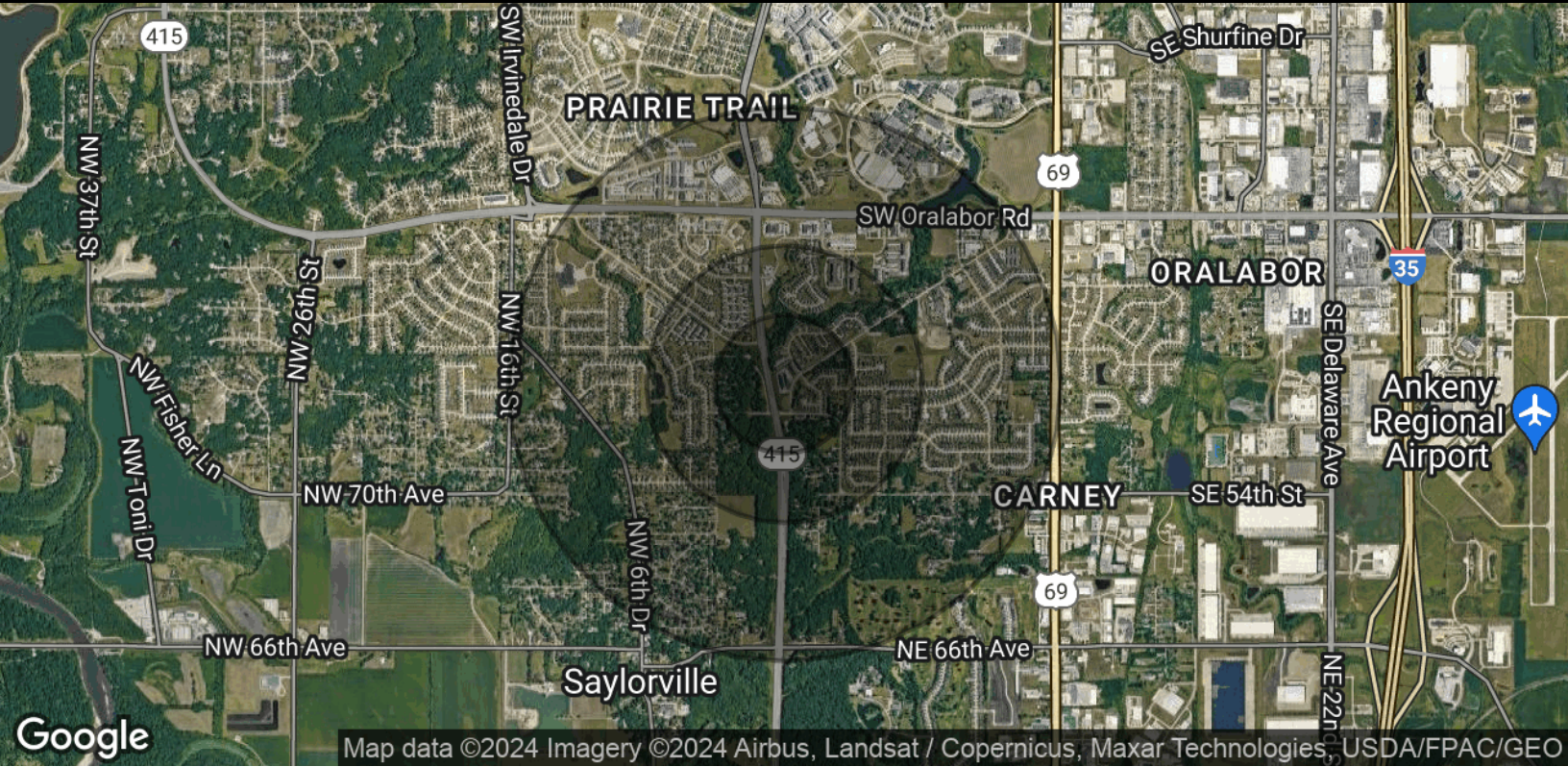
| caliberiowa.com

Skyline Lofts Commercial

1680 SW Ankeny Rd #2D, Ankeny, IA 50023



CALIBER
REALTY



POPULATION	0.25 MILES	0.5 MILES	1 MILE
Total Population	731	3,020	8,443
Average Age	32.9	32.8	32.7
Average Age (Male)	33.7	33.8	33.9
Average Age (Female)	34.8	33.9	33.2

HOUSEHOLDS & INCOME	0.25 MILES	0.5 MILES	1 MILE
Total Households	269	1,158	3,258
# of Persons per HH	2.7	2.6	2.6
Average HH Income	\$106,154	\$101,978	\$102,605
Average House Value	\$232,352	\$224,166	\$223,473

* Demographic data derived from 2020 ACS - US Census