

OFFICE SPACE FOR SUB-LEASE



700 QUAKER LANE

Warwick, RI 02886

LEEDS MITCHELL IV, SIOR
Executive Vice President
401.751.3200 x307
leeds@mgcommercial.com

MG COMMERCIAL
365 Eddy Street, Penthouse Suite
Providence, RI 02903
401.751.3200 | mgcommercial.com

PROPERTY SUMMARY



PROPERTY DESCRIPTION

MG Commercial is pleased to bring to market this recently renovated and professionally designed first-class office space ready for immediate occupancy. In addition to the expansive work areas, this cutting edge office space affords abundant natural light throughout and boasts multiple kitchens, coffee bar stations, conference rooms and huddle/meeting rooms. Rare opportunity to occupy the most forward looking office space on the market today.

PROPERTY HIGHLIGHTS

- Sublease through 12/30/27
- First class fit and finishes
- Serene setting with great views
- Property management and security on-site
- Plug & Play

LOCATION DESCRIPTION

700 Quaker Lane is located at the southern end of Route 2 and is less than 3/4 of a mile from the Route 95 on/of ramps at Exit 8. It is just 20 minutes from downtown Providence and 13 minutes from T.F. Green Airport. In addition it is surrounded by countless retail amenities situated along Route 2.

OFFERING SUMMARY

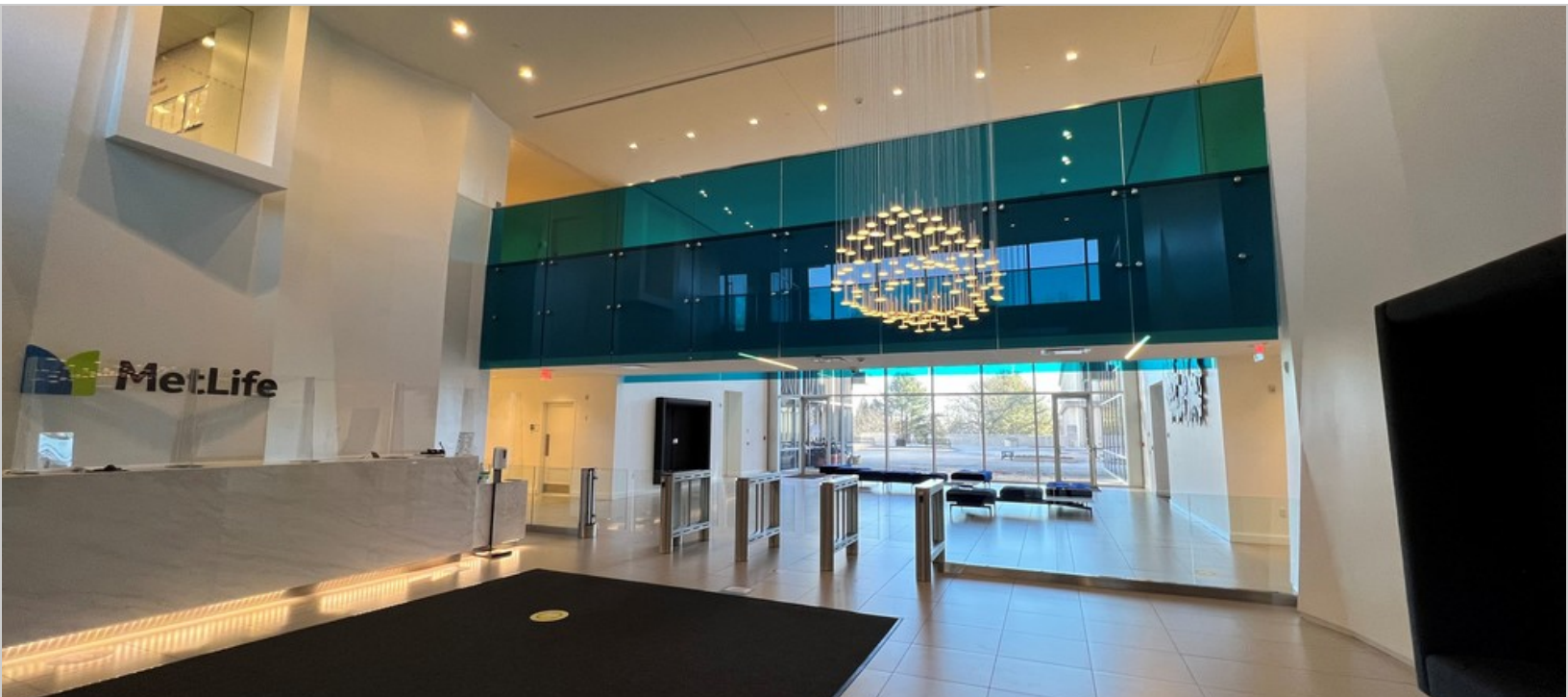
Lease Rate:	\$17.00 SF/yr (MG)
Available SF:	20,000 - 99,238 SF
Building Size:	370,300 SF

LEEDS MITCHELL IV, SIOR
Executive Vice President
401.751.3200 x307
leeds@mgcommercial.com

365 Eddy Street, Penthouse Suite
Providence, RI 02903
mgcommercial.com



LOCATION MAPS

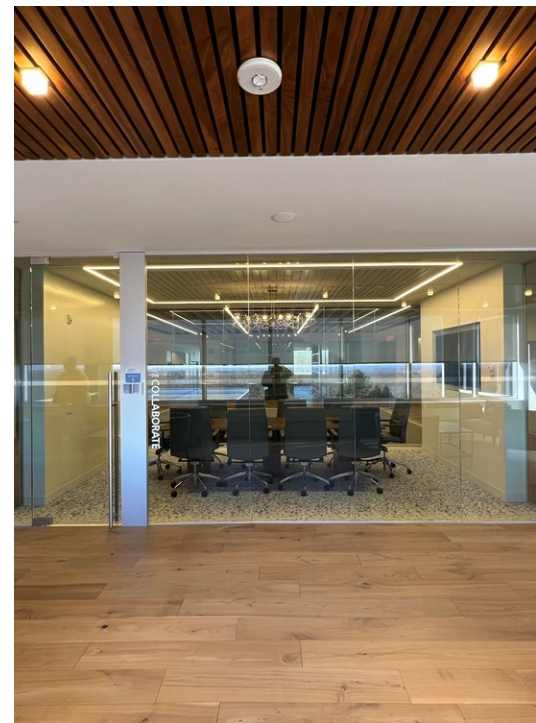


LEEDS MITCHELL IV, SIOR
Executive Vice President
401.751.3200 x307
leeds@mgcommercial.com

365 Eddy Street, Penthouse Suite
Providence, RI 02903
mgcommercial.com



ADDITIONAL PHOTOS



LEEDS MITCHELL IV, SIOR
Executive Vice President
401.751.3200 x307
leeds@mgcommercial.com

365 Eddy Street, Penthouse Suite
Providence, RI 02903
mgcommercial.com

