



Ranked in Top 50
Commercial Firms in U.S.



For Sale - Industrial Portfolio

39A & 39B Industrial Park Road, Essex, CT (aka Plains Road)

TWO INDUSTRIAL BUILDINGS TOTALING 64,000± SF

SALE PRICE: \$5,400,000

HIGHLIGHTS

- Value-Add Investment Opportunity
- **39A Industrial Park Rd – 100% Occupied**
 - 40,000± SF – Strong Single Tenancy in Place
 - 26' Clear Ceiling Heights
 - 2 (8x10) Drive-in Doors
 - 4 (8x10) Docks
 - 24'x50' Column Spacing
- **39B Industrial Park Rd – Vacant**
 - Functional Space Immediately For Lease
 - 24,000± SF Available
 - 17.6' – 20' Clear Ceiling Heights
 - 1 (10x13) Drive-in Door
 - 4 (8x10) Docks
 - 20'x54' Column Spacing



Will Braun,
Cell: 203-804-6001
wbraun@orlcommercial.com

Sam Crampton
Cell: 203-343-8426
scrampton@orlcommercial.com

Nick Leone
Cell: 203-903-6709
nleone@orlcommercial.com

J. Richard Lee
Office: 203-488-1555
rlee@orlcommercial.com



2 Summit Place, Branford, CT 06405 | (203) 488-1555 | (203) 315-4046
2430 Silas Deane Highway, Rocky Hill, CT 06067 | (860) 721-0033 | (860) 721-7882
Broker of Record: J. Richard Lee | (203) 643-1006 | rlee@orlcommercial.com | License: REB.0758300

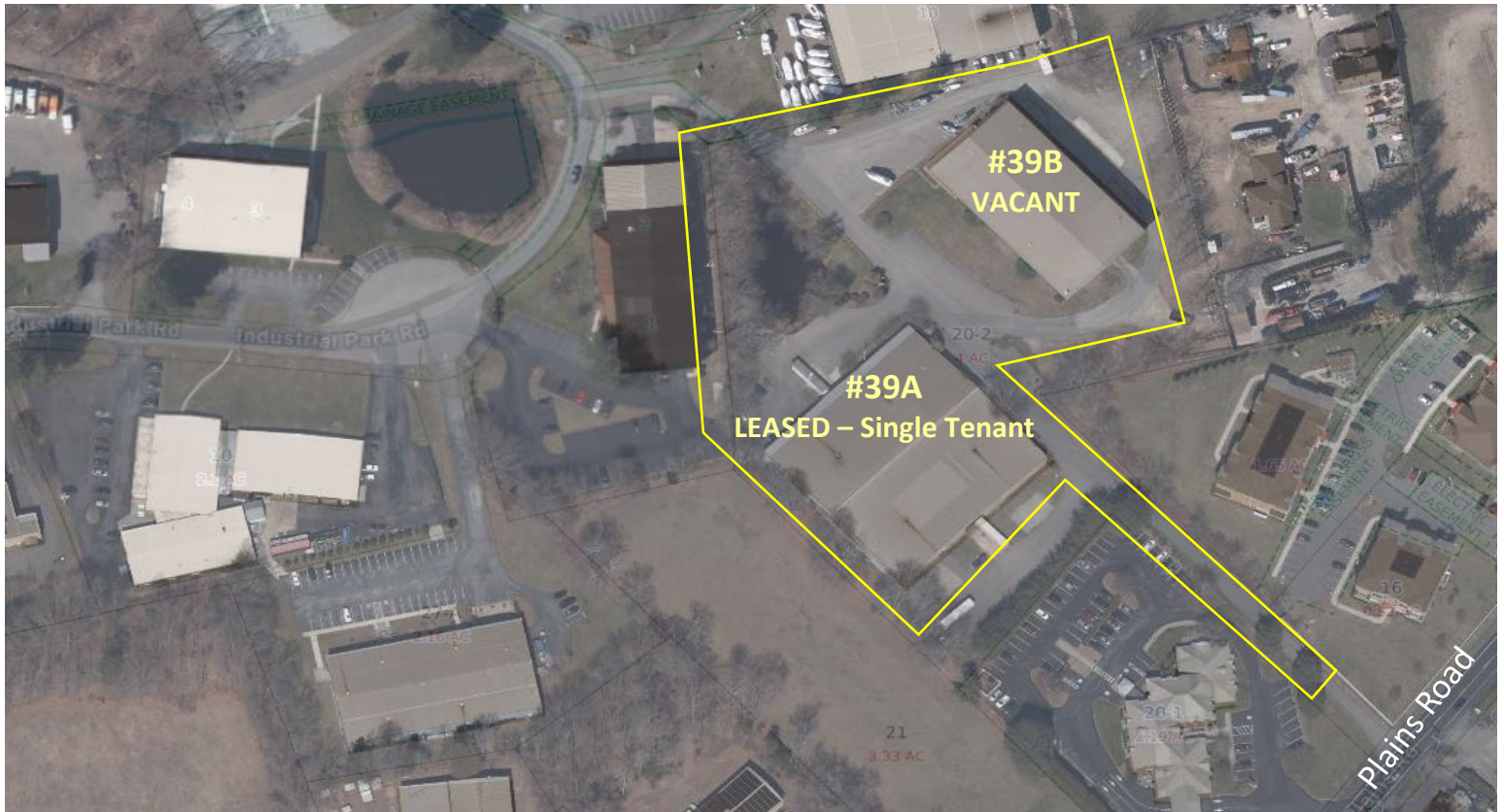


FOR SALE

SALE PRICE: \$5,400,000

39A & 39B Industrial Park Road, Essex, CT (aka Plains Road)

Two Industrial Buildings Totaling 64,000± SF



WWW.ORLCOMMERCIAL.COM



2 Summit Place, Branford, CT 06405 | (203) 488-1555 | (203) 315-4046

2430 Silas Deane Highway, Rocky Hill, CT 06067 | (860) 721-0033 | (860) 721-7882

Broker of Record: J. Richard Lee | (203) 643-1006 | rlee@orlcommercial.com | License: REB.0758300

SALE PRICE: \$5,400,000

39A & 39B Industrial Park Road, Essex, CT (aka Plains Road)

Two Industrial Buildings Totaling 64,000± SF

FOR SALE 

39A INDUSTRIAL PARK ROAD
4 Loading Docks & 2 Drive-in Doors



39B INDUSTRIAL PARK ROAD
4 Loading Docks & 1 Drive-in Door



WWW.ORLCOMMERCIAL.COM



2 Summit Place, Branford, CT 06405 | ☎ (203) 488-1555 | 📠 (203) 315-4046

2430 Silas Deane Highway, Rocky Hill, CT 06067 | ☎ (860) 721-0033 | 📠 (860) 721-7882

Broker of Record: J. Richard Lee | (203) 643-1006 | rlee@orlcommercial.com | License: REB.0758300

While the information contained herein has been obtained from sources deemed to be reliable, no guarantee is made as to its accuracy. | PAGE 3 OF 4

BUILDING INFORMATION

	Bldg 39A	Bldg 39B
GROSS BLDG AREA:	40,000± SF	24,000± SF
AVAILABLE AREA:	None	24,000± SF
OCCUPANCY:	100% Leased	Vacant
LOADING DOCKS:	4 (8x10)	4 (8x10)
DRIVE-IN DOORS:	2 (8x10)	1 (10x13)
CLEAR HEIGHT:	26'	17.6' – 20'
COLUMN SPACING:	24' x 50'	20' x 54'
CONSTRUCTION:	Steel	Steel
ROOF TYPE:	Metal	Metal
YEAR BUILT:	1988	1990

MECHANICAL EQUIPMENT

AIR CONDITIONING:	Partial	Partial
HEAT:	Forced Air	Forced Air
ELECTRIC/POWER:	1200 amp, 3 Phase	400 amp, 3 Phase
GENERATOR:	Full Building	

SITE INFORMATION

SITE AREA:	4.0± Acre Site
ZONING:	LI – Light Industrial
PARKING:	Shared Between Buildings
SIGNAGE:	Building, Monument
HWY ACCESS:	Route 9, I-95

UTILITIES

SEWER/WATER:	Septic / Public Connected
GAS:	Yes

TAXES

ASSESSMENT:	\$1,864,900
MILL RATE:	18.63
TAXES:	\$34,743.10 (thru Jan 2026)

EXPENSES

RE TAXES:	<input checked="" type="checkbox"/> Tenant <input type="checkbox"/> Landlord
UTILITIES:	<input checked="" type="checkbox"/> Tenant <input type="checkbox"/> Landlord
INSURANCE:	<input checked="" type="checkbox"/> Tenant <input type="checkbox"/> Landlord
MAINTENANCE:	<input checked="" type="checkbox"/> Tenant <input type="checkbox"/> Landlord
JANITORIAL:	<input checked="" type="checkbox"/> Tenant <input type="checkbox"/> Landlord



39A Industrial Park Road - LEASED



39A Industrial Park Road - LEASED



39B Industrial Park Road - VACANT

Will Braun,  
 Cell: 203-804-6001
wbraun@orlcommercial.com

Sam Crampton
 Cell: 203-343-8426
scrampton@orlcommercial.com

Nick Leone
 Cell: 203-903-6709
nleone@orlcommercial.com

J. Richard Lee
 Office: 203-488-1555
rlee@orlcommercial.com



WWW.ORLCOMMERCIAL.COM



2 Summit Place, Branford, CT 06405 | ☎ (203) 488-1555 | 📠 (203) 315-4046
 2430 Silas Deane Highway, Rocky Hill, CT 06067 | ☎ (860) 721-0033 | 📠 (860) 721-7882
 Broker of Record: J. Richard Lee | (203) 643-1006 | rlee@orlcommercial.com | License: REB.0758300