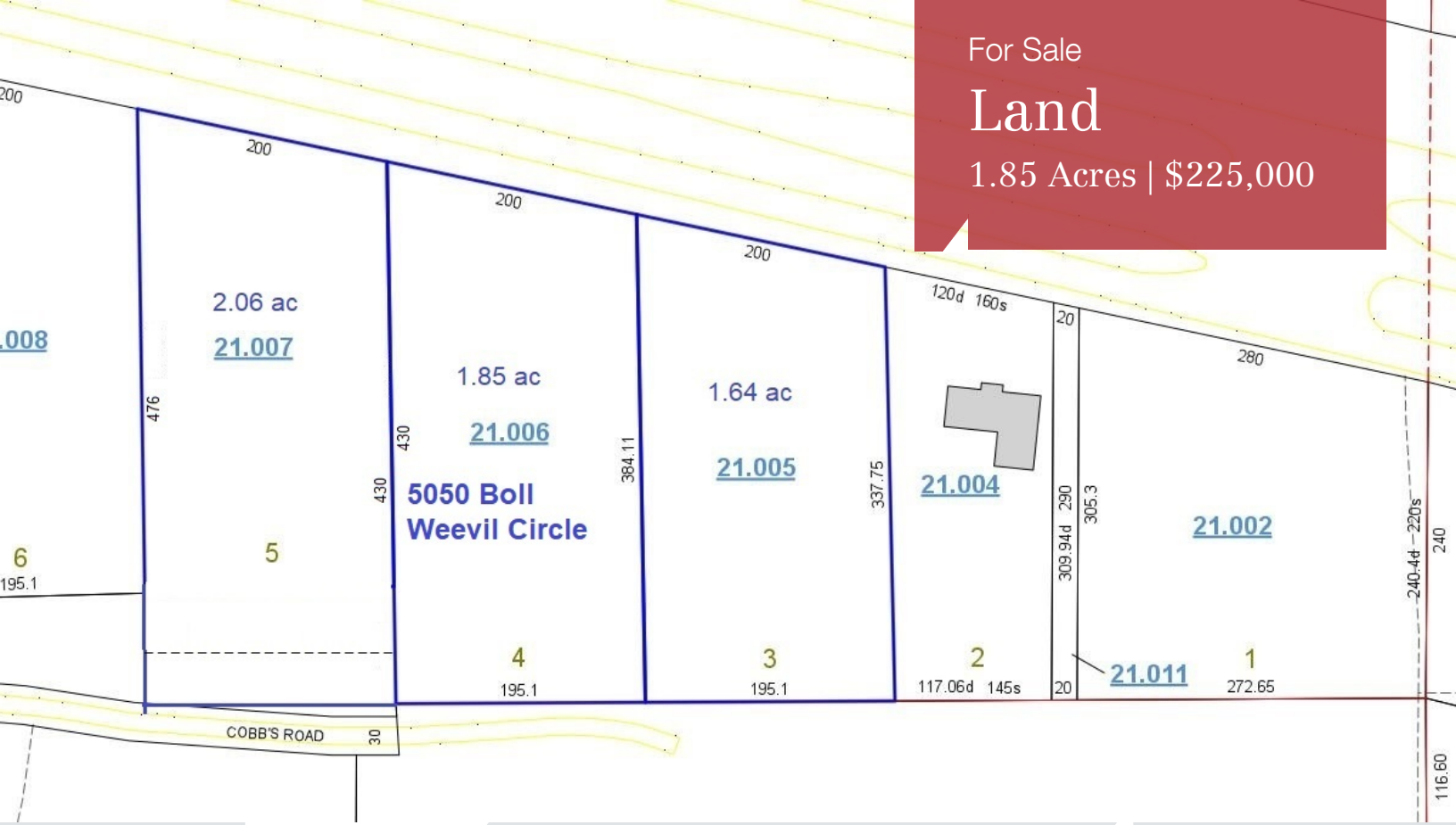


For Sale

Land

1.85 Acres | \$225,000



5050 Boll Weevil Circle

Enterprise, Alabama 36330

Property Highlights

- Flat, level lot
- Access road parallel to Boll Weevil Circle with access to Boll Weevil Circle and Highway 27 South.
- Near new Junior High School, Santa Fe Steakhouse, motels, and Camellia Commons.
- Can be combined with 2 adjacent lots for a combined total of 600 ft. frontage.

Property Description

Can be combined with 2 adjacent lots for a combined total of 600 ft. frontage. Easy access to Boll Weevil Circle and Highway 27 South. High traffic area near restaurants, shopping and motels.

OFFERING SUMMARY

Sale Price	\$225,000
Lot Size	1.85 Acres

DEMOGRAPHICS

Stats	Population	Avg. HH Income
5 Miles	25,366	\$56,097
10 Miles	47,751	\$59,204
20 Miles	106,450	\$54,480

For more information

Kenny Whatley

O: 334 699 8000 | C: 334 596 7890
kwhatley@talcor.com

For Sale

Land

1.85 Acres | \$225,000



Map data ©2018 Google



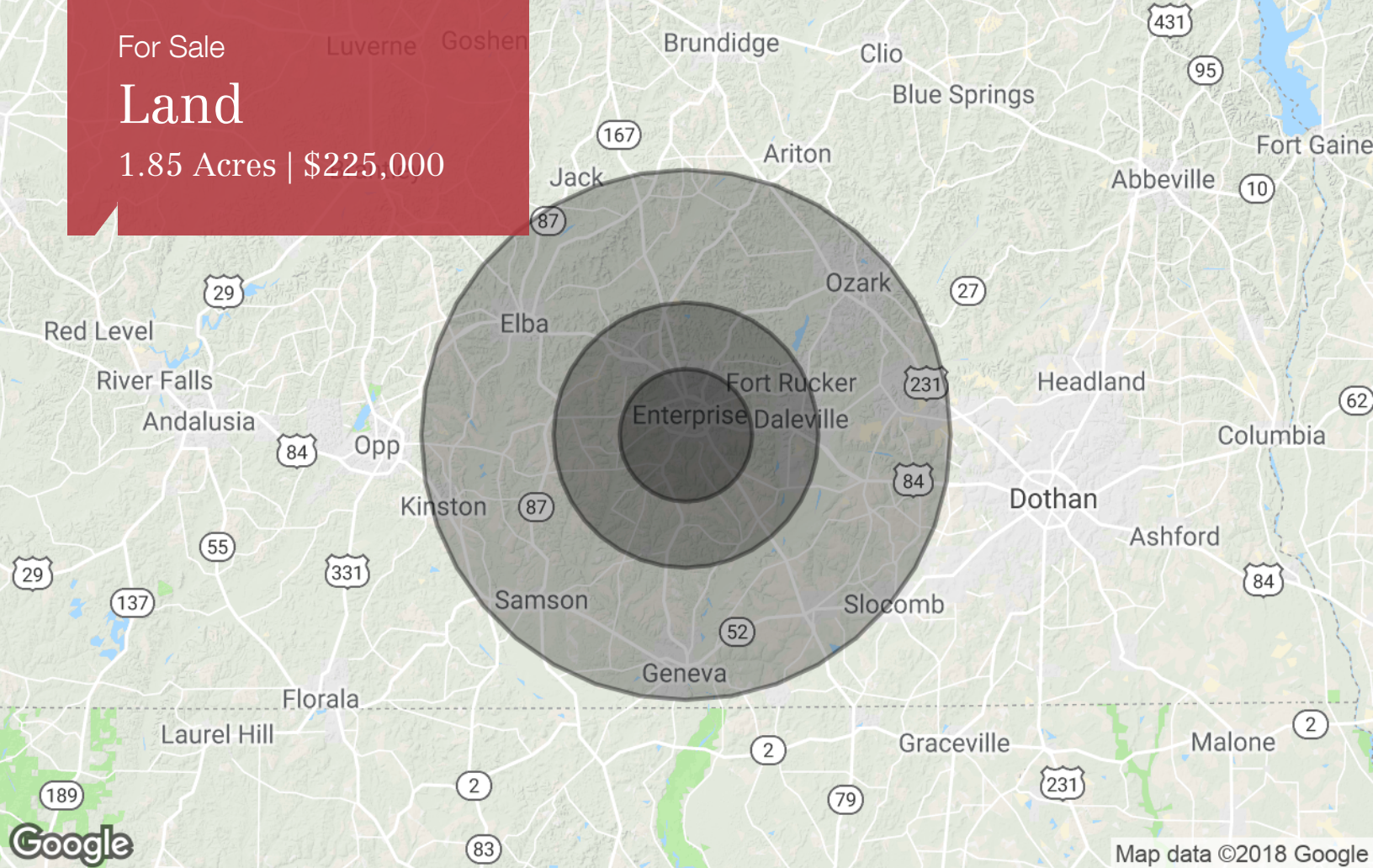
Map data ©2018 Google

For Sale

Luverne Goshen

Land

1.85 Acres | \$225,000



Population

	5 Miles	10 Miles	20 Miles
TOTAL POPULATION	25,366	47,751	106,450
MEDIAN AGE	36.7	36.9	38.0
MEDIAN AGE (MALE)	34.0	34.6	36.1
MEDIAN AGE (FEMALE)	38.3	38.4	39.7

Households & Income

	5 Miles	10 Miles	20 Miles
TOTAL HOUSEHOLDS	10,050	18,800	41,860
# OF PERSONS PER HH	2.5	2.5	2.5
AVERAGE HH INCOME	\$56,097	\$59,204	\$54,480
AVERAGE HOUSE VALUE	\$139,468	\$139,905	\$134,085

Race

	5 Miles	10 Miles	20 Miles
% WHITE	74.4%	78.5%	79.3%
% BLACK	22.5%	18.1%	18.1%
% ASIAN	1.3%	1.6%	1.2%
% HAWAIIAN	0.1%	0.1%	0.1%
% INDIAN	0.8%	0.7%	0.5%
% OTHER	1.0%	1.0%	0.9%

Ethnicity

	5 Miles	10 Miles	20 Miles
% HISPANIC	9.6%	8.6%	5.9%

* Demographic data derived from 2010 US Census

For Sale

Land

1.85 Acres | \$225,000



Kenny Whatley

Commercial Advisor

334.699.8000 tel
334.596.7890 cell
334.479.8128 fax
kwhatley@talcor.com

Education

University of Alabama

Memberships & Affiliations

Dothan Multiple Listing Service, Dothan Association of Realtors, Alabama Association of Realtors, National Association of Realtor, Dothan Chamber of Commerce, Bay County Association of Realtors, Bay County Multiple Listing Service and Panama City Beach Chamber of Commerce.

Professional Background

Kenny has many years experience in the business world as a business owner and operator. He has been involved in Commercial Real Estate since 1996. Kenny and his wife have 4 children and 7 grandchildren. In his spare time he enjoys traveling, especially to visit his children and grandchildren and Alabama football.