



VALUE INDUSTRIAL PARTNERS, LLC

Industrial Real Estate Investment, Brokerage and Management

477 W. Wrightwood Avenue, Elmhurst, Illinois 60126 TEL: 630-333-1900 FAX: 630-333-1910



5400 Newport Drive, Unit 9 Rolling Meadows, Illinois

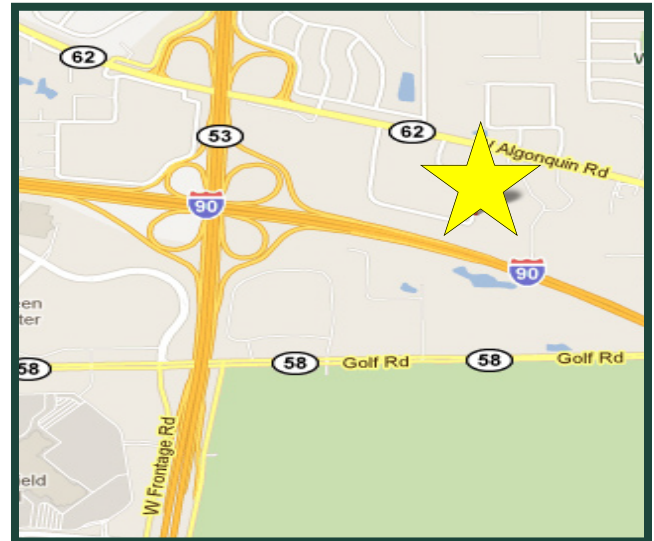
FOR LEASE
2,626 SF

Building Specifications

Available Size:	2,626 Square Feet
Building Size:	157,167 Square Feet
Office Size:	1,211 Square Feet
Ceiling Height:	12'
Loading:	3 Common Interior Docks 1 Drive-up Ramp
Heat:	Gas
Sprinklers:	Yes
Power:	100 Amps/3 Phase
Taxes:	Included with Current Stop
Operating Expenses:	Included with Current Stop
Lease Rate:	\$2,845.00 Per Month Gross

Comments

- Professionally owned and managed
- Prime location at Rt. 53 & I-90
- Open office area



For Further Information, Please Contact:

Brian P. Gedvilas, Director of Leasing
bgedvilas@valueindustrialpartners.com

Jennifer L. Dobrowolski
jdobrowolski@valueindustrialpartners.com

TEL: 630-333-1900 FAX: 630-333-1910

Officers of the firm have an ownership interest in this property.
Submitted subject to error, change in status, or withdrawal without notice.



VALUE INDUSTRIAL PARTNERS, LLC

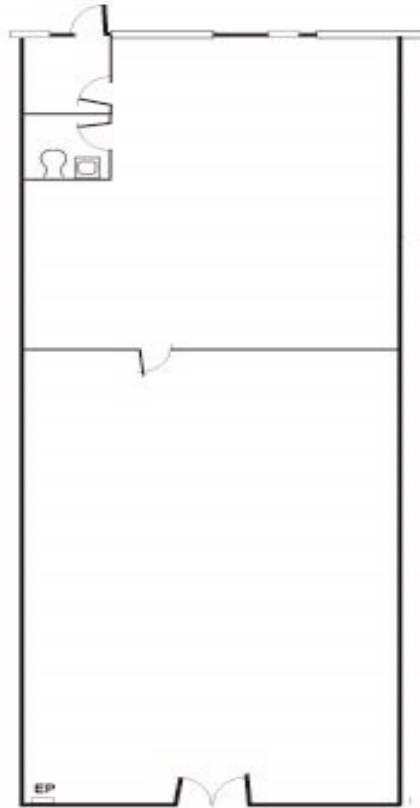
Industrial Real Estate Investment, Brokerage and Management

477 W. Wrightwood Avenue, Elmhurst, Illinois 60126 TEL: 630-333-1900 FAX: 630-333-1910

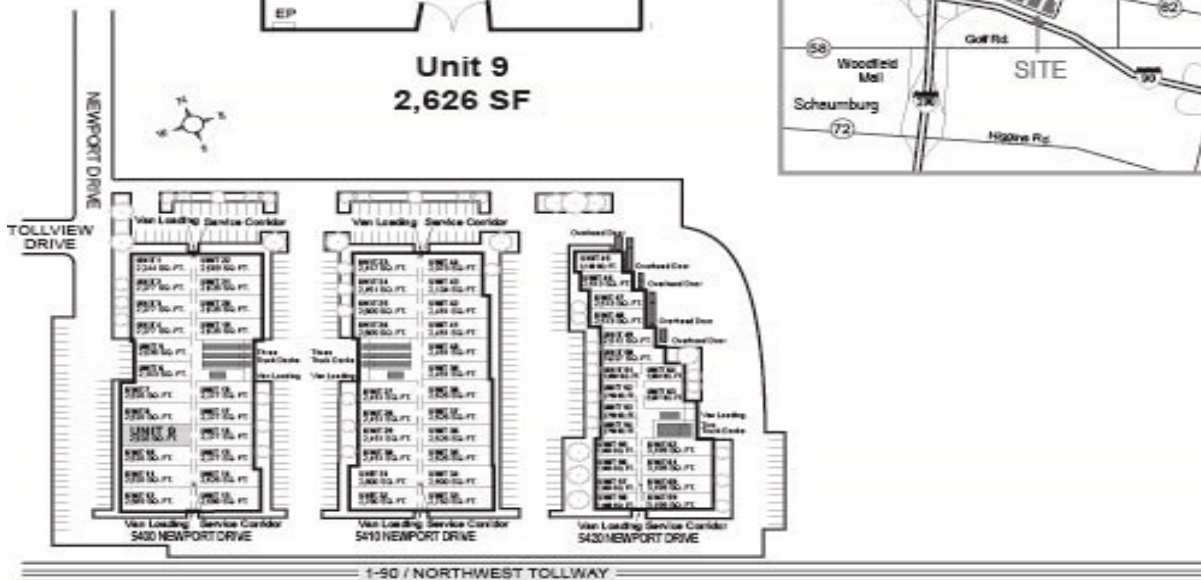
LAYOUT

Mercury Corporate Centre – Rolling Meadows

5400 Newport Drive • Unit 9 • Rolling Meadows, IL



**Unit 9
2,626 SF**



FOR ILLUSTRATION PURPOSES ONLY

Officers of the firm have an ownership interest in this property.
Submitted subject to error, change in status, or withdrawal without notice.