

2500 County Rd B W

St. Paul, MN 55130



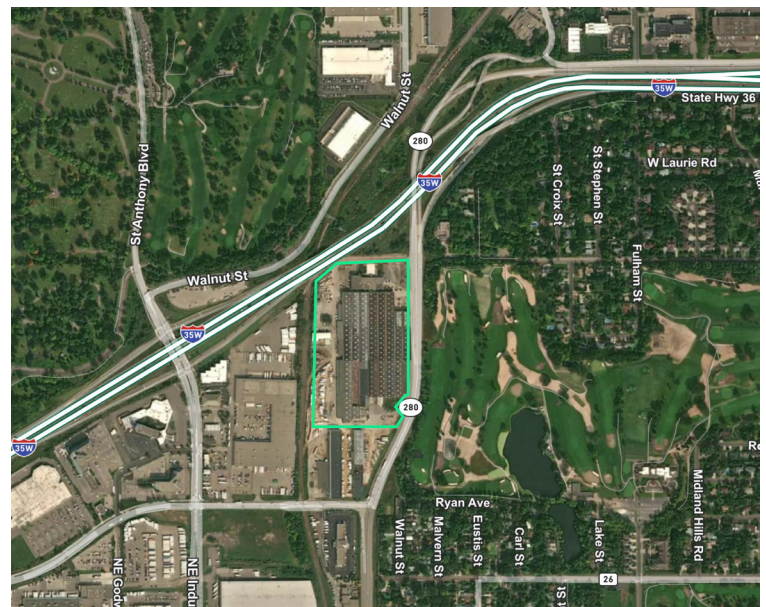
Property Highlights

- + Total Building: 53,000 SF
- + Available 1,600 to 14,000 SF
- + Flexible Terms and size
- + Rate: \$14.00/SF Gross

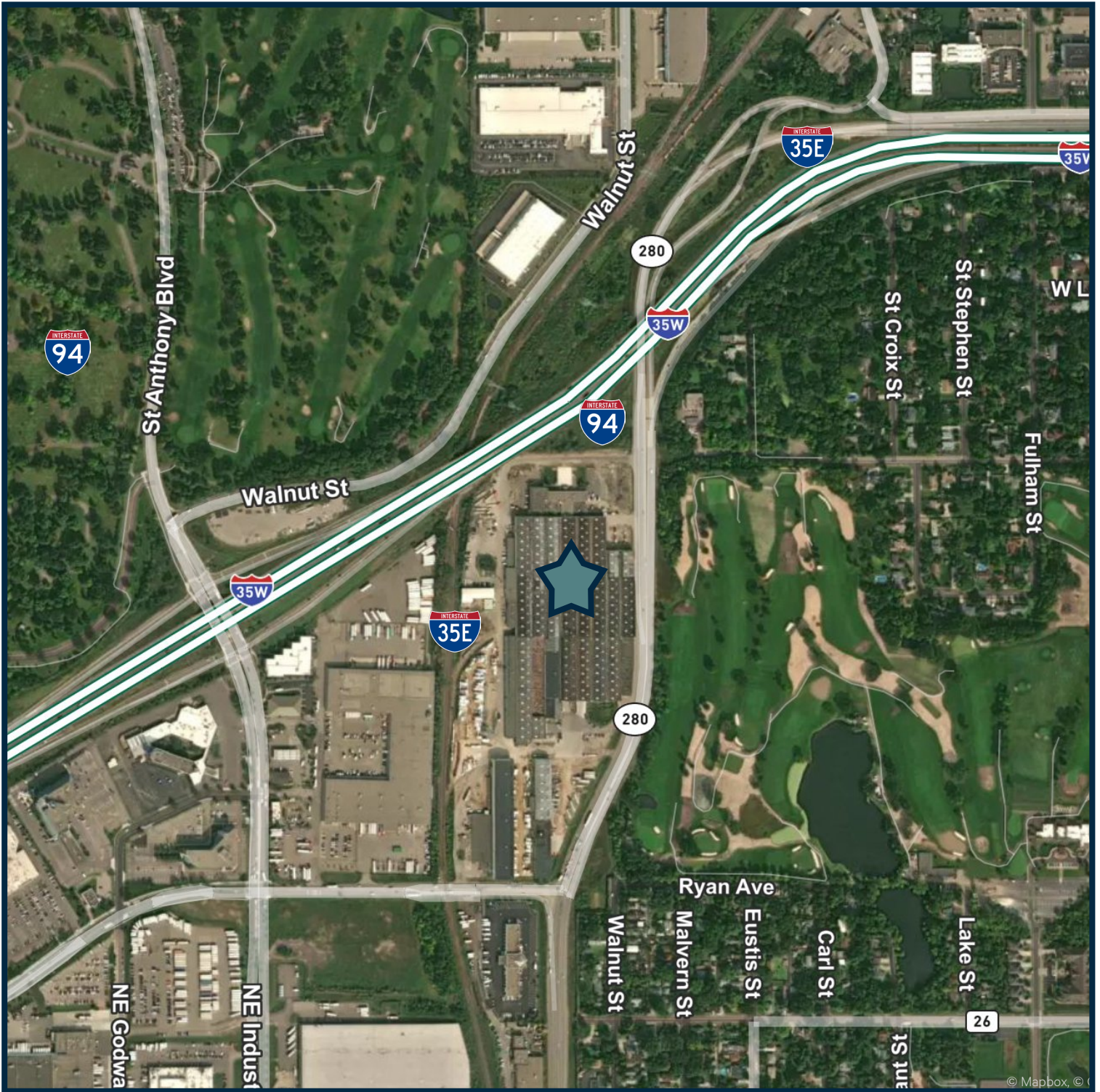
Contact Us

Sandy Barin
Senior Vice President
+1 952 924 4816
sandy.barin@cbre.com

Jeff Przytarski
Senior Vice President
+1 952 924 4895
jeff.prytarski@cbre.com



2500 County Rd B W
Roseville, MN 5513



Contact Us

Sandy Barin
Senior Vice President
+1952 924 4816
sandy.barin@cbre.com

Jeff Przytarski
Senior Vice President
+1 952 924 4895
jeff.przytarski@cbre.com

© 2025 CBRE, Inc. All rights reserved. This information has been obtained from sources believed reliable, but has not been verified for accuracy or completeness. You should conduct a careful, independent investigation of the property and verify all information. Any reliance on this information is solely at your own risk. CBRE and the CBRE logo are service marks of CBRE, Inc. All other marks displayed on this document are the property of their respective owners, and the use of such logos does not imply any affiliation with or endorsement of CBRE. Photos herein are the property of their respective owners. Use of these images without the express written consent of the owner is prohibited.