

12810 – 12818 TESSON FERRY ROAD
ST. LOUIS, MO 63128



Contact Information

Matt Hirsch
(314) 646-3305
mhirsch@mdrea.com

PROPERTY HIGHLIGHTS

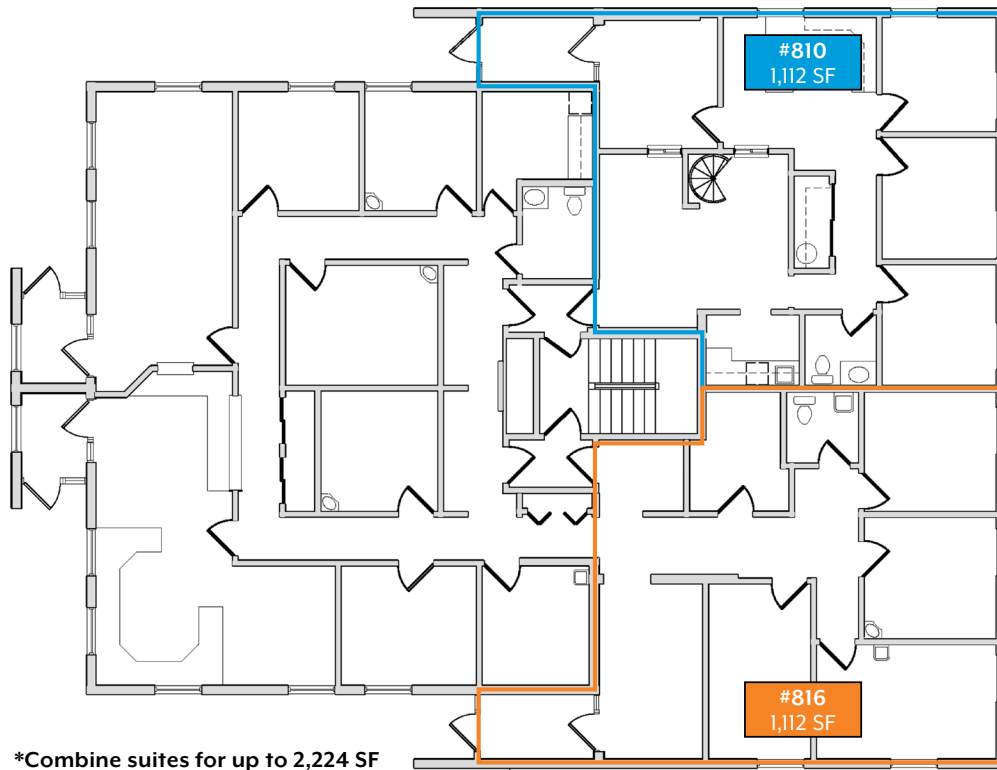
- ▶ Up to 2,224 SF Medical Office
- ▶ Located 1/4 mile from Mercy Hospital South with easy access to I-270
- ▶ Building and digital pylon signage with high visibility to 37,000 VPD on Tesson Ferry Road
- ▶ Easily accessible building with surface level access to all physician suites
- ▶ Garage and surface level parking
- ▶ Newly updated exterior and interior common areas with high-end finishes
- ▶ **Lease Rate: \$26.00/sf FS**



Cozad Commercial Real Estate
MD Real Estate Advisors, LLC
16 Sunnen Drive, Ste. 164
St. Louis, Missouri 63143

12810 – 12818 TESSON FERRY ROAD

ST. LOUIS, MO 63128



*Combine suites for up to 2,224 SF

Information herein has been obtained from the owner of the property or from other sources. The brokers do not guarantee the accuracy of this information. Sellers and brokers make no representation as to the environmental or other conditions of the property and that purchaser investigate fully.

COZAD COMMERCIAL REAL ESTATE
MD REAL ESTATE ADVISORS
A subsidiary of Cozad Commercial Real Estate, Ltd.
16 Sunnen Dr., Ste. 164 • St. Louis, MO 63143