

# WAREHOUSE DISTRICT

CLEVELAND

PREMIER OFFICE SPACE FOR LEASE

## 1220 W 6TH BRADLEY BUILDING

### REMAINING AVAILABILITIES

Suite 205 1,610 RSF  
Suite 400 3,240 RSF



True mixed-use



Rich history, modern feel



Convenient Access

## CONTACTS

CBRE

SIXTY NORTH

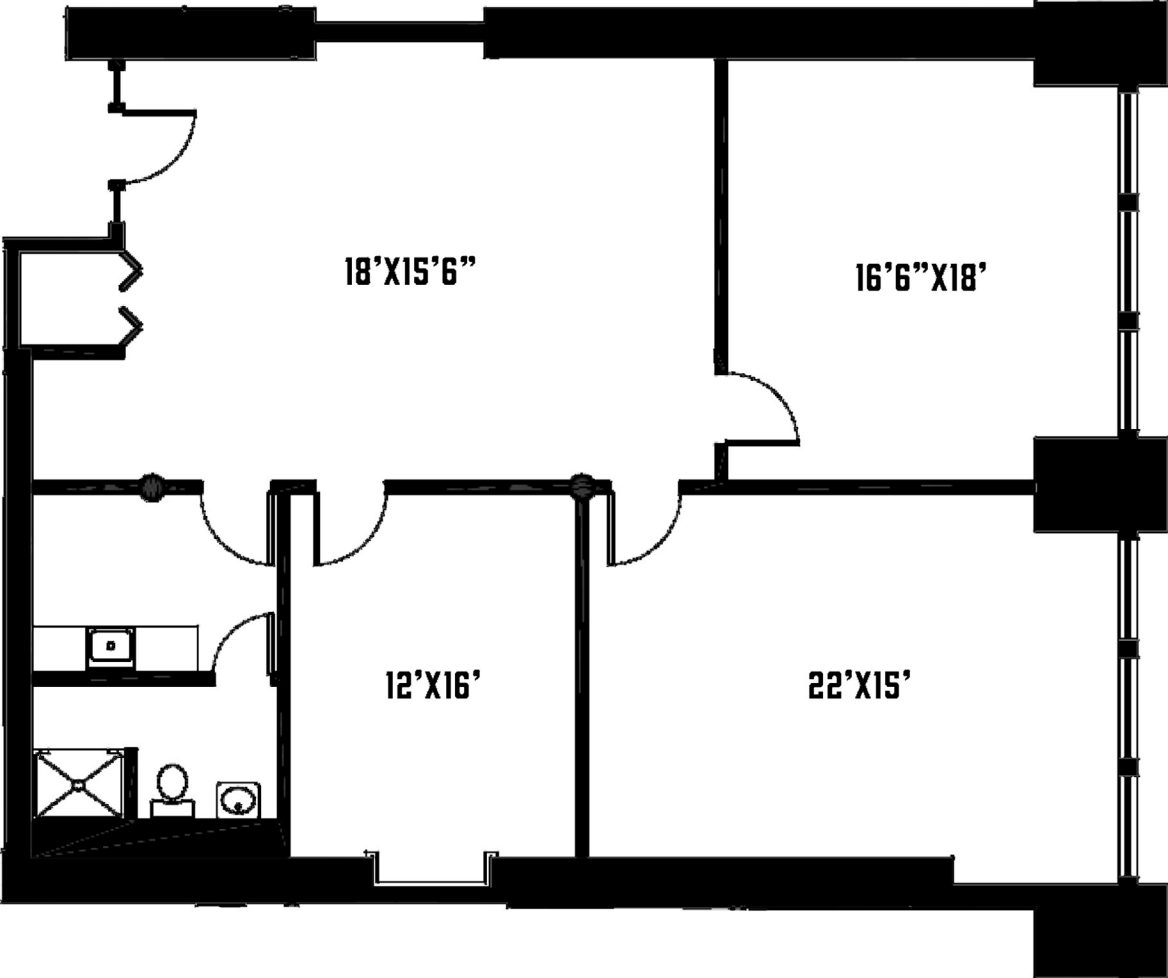
WARREN  
BLAZY III

+1 330 606 5917  
warren.blazy@cbre.com

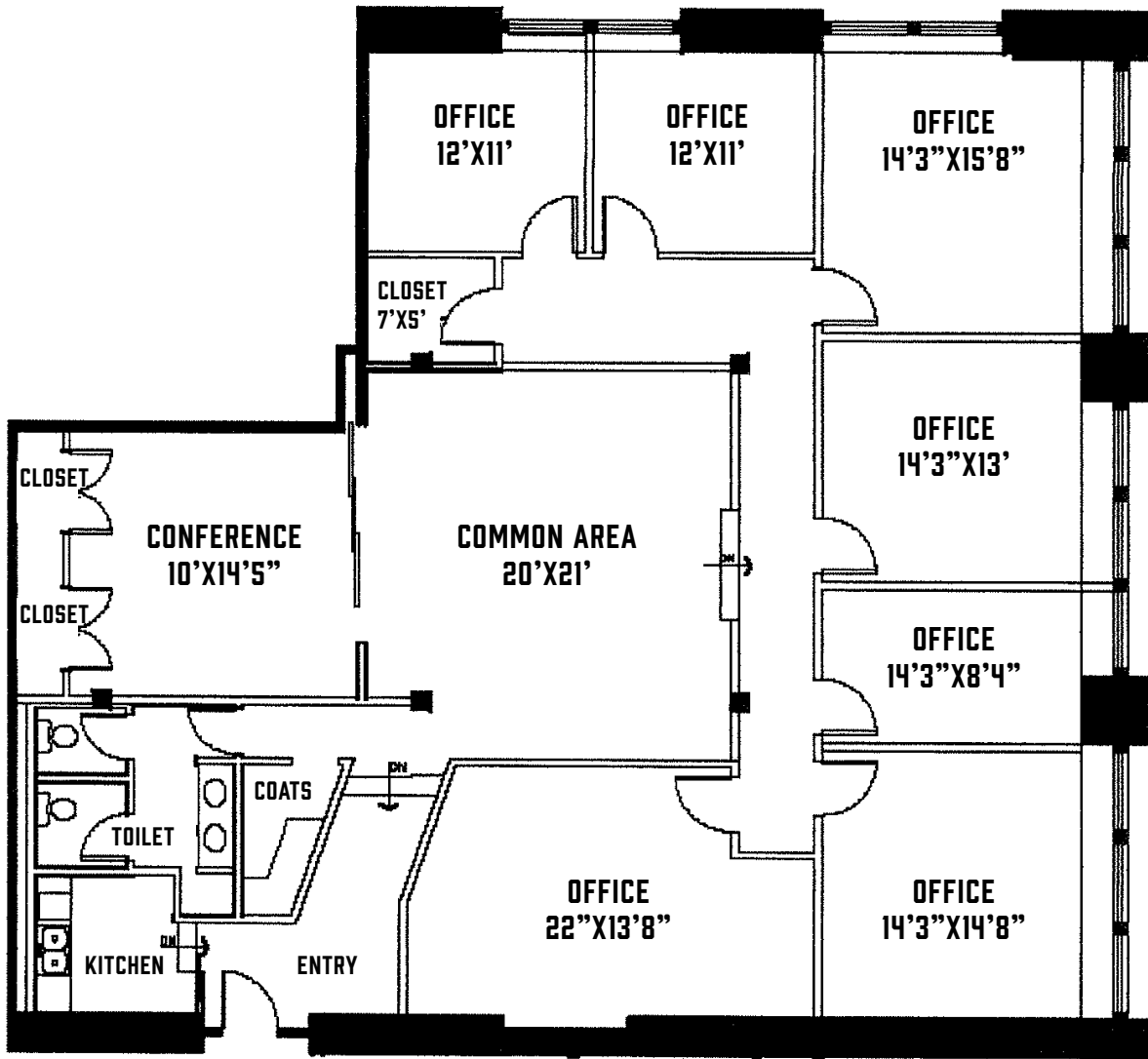
ERIC  
SMITH

+1 330 714 6558  
eric.smith3@cbre.com

**SUITE 205 - 1,610 RSF**



# SUITE 400 - 3,240 RSF



## CONTACTS



**WARREN  
BLAZY III**

+1 330 606 5917  
warren.blazy@cbre.com

**ERIC  
SMITH**

+1 330 714 6558  
eric.smith3@cbre.com

© 2024 CBRE, Inc. All rights reserved. This information has been obtained from sources believed reliable but has not been verified for accuracy or completeness. CBRE, Inc. makes no guarantee, representation or warranty and accepts no responsibility or liability as to the accuracy, completeness, or reliability of the information contained herein. You should conduct a careful, independent investigation of the property and verify all information. Any reliance on this information is solely at your own risk. CBRE and the CBRE logo are service marks of CBRE, Inc. All other marks displayed on this document are the property of their respective owners, and the use of such marks does not imply any affiliation with or endorsement of CBRE. Photos herein are the property of their respective owners. Use of these images without the express written consent of the owner is prohibited. PMStudio\_January2024