

# Salem Street Arboretum

1930 N Salem, Apex, NC 27523

FOR SALE

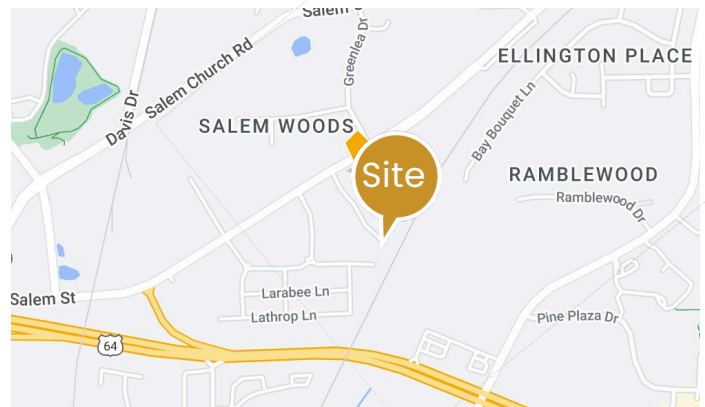


✦ \$3,500,000

✦ Office building on 7 acres, zoned LI

✦ High growth area

✦ City water and sewer



  
**KALISIAK**  
PROPERTIES, INC.  
kalisiakproperties.com

Jill Kalisiak  
Broker-in-Charge  
919.518.6538  
jill@kalisiakproperties.com



# Demographics

Source: CoStar

## 41,643

TOTAL POPULATION

WITHIN 2-MILE RADIUS

## 212,408

TOTAL POPULATION

WITHIN 5-MILE RADIUS

## \$137,325

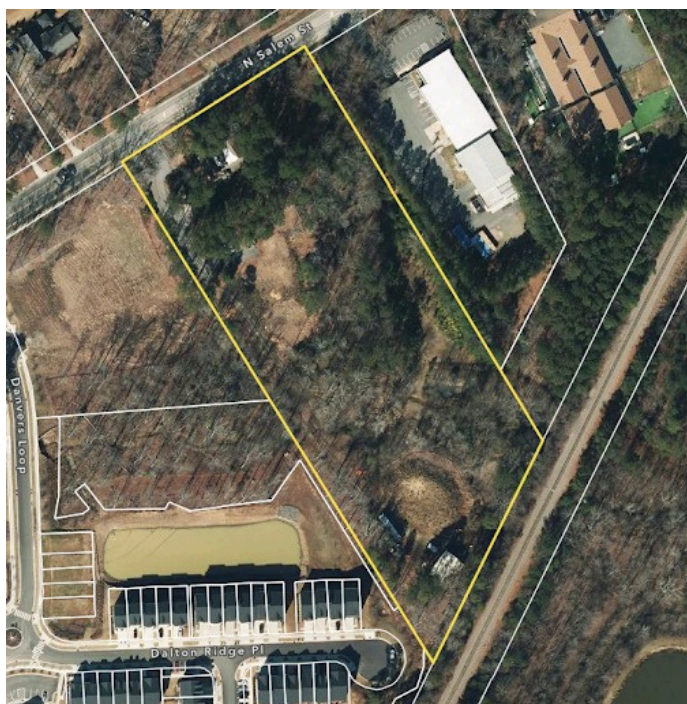
AVG HOUSEHOLD INCOME

WITHIN 2-MILE RADIUS

## \$136,388

AVG HOUSEHOLD INCOME

WITHIN 5-MILE RADIUS



Salem Street Arboretum is a 7-acre parcel with 5000SF of office space. Approved Site Plan from the Town of Apex for 6 additional buildings totaling 61,250 SF. Approved parking totals 200 spaces (50 of those covered). All buildings are approved for two-story configuration with elevator access. This exceptional location is in the fastest growing town in NC. Convenient to historic downtown Apex, Cary, downtown Raleigh and RDU International Airport.

## For more information:

## 919.518.6538

The information presented here is deemed to be accurate, but it has not been independently verified. We make no guarantee, warranty or representation to independently confirm accuracy and completeness.