



SPACE AVAILABLE

CARMANS PLAZA

941 CARMANS PLAZA
MASSAPEQUA, NY



PROPERTY HIGHLIGHTS

- 195,000 SF shopping center with 966 parking spaces
- 159,149 population in a 3-mile radius
- Accessible from Sunrise Highway, Southern State Parkway and Route 110
- Shopping center renovations completed with building facade, updated storefront signage, re-paved & re-striped parking lot and pylons
- Strong national tenant lineup, to include:



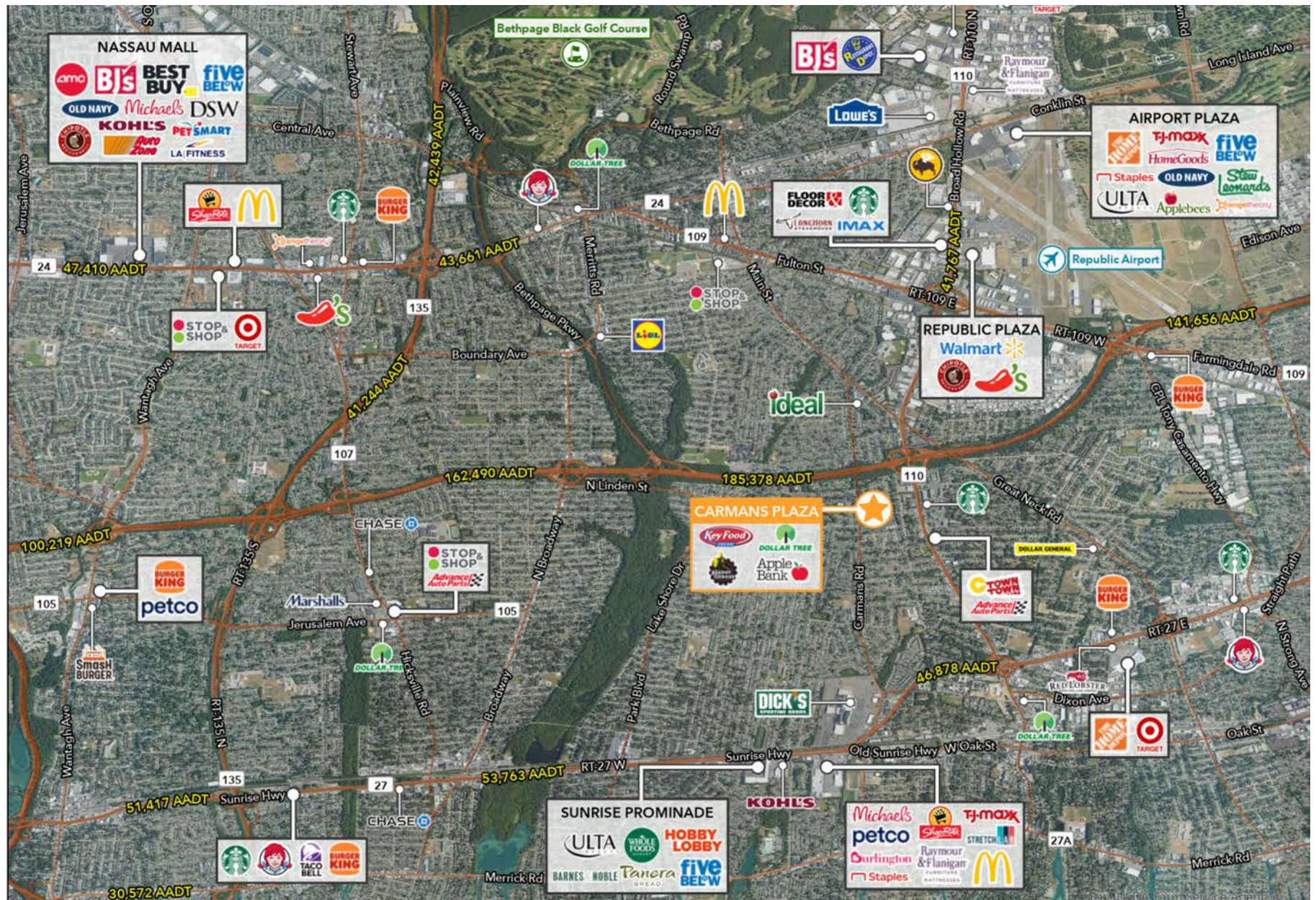
AVAILABLE SPACES

- Space 4: 9,603 SF
- Space 12: 13,404 SF - **LEASED**
- Space 22: 1,120 SF

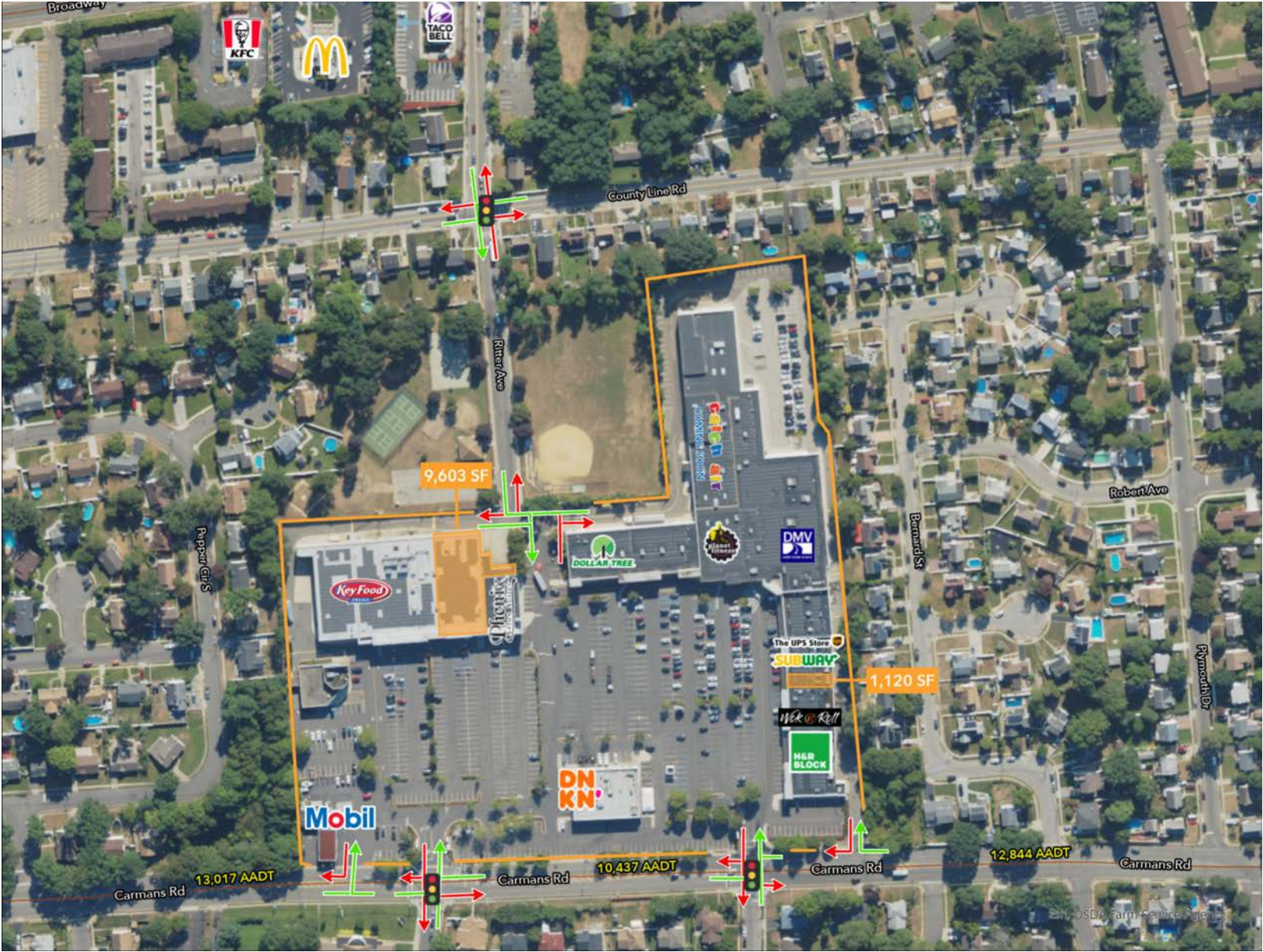


PROPERTY OVERVIEW

MARKET OVERVIEW



ACCESS AERIAL



AVAILABLE SPACE: #4



FRONT
51'

DEPTH
140'

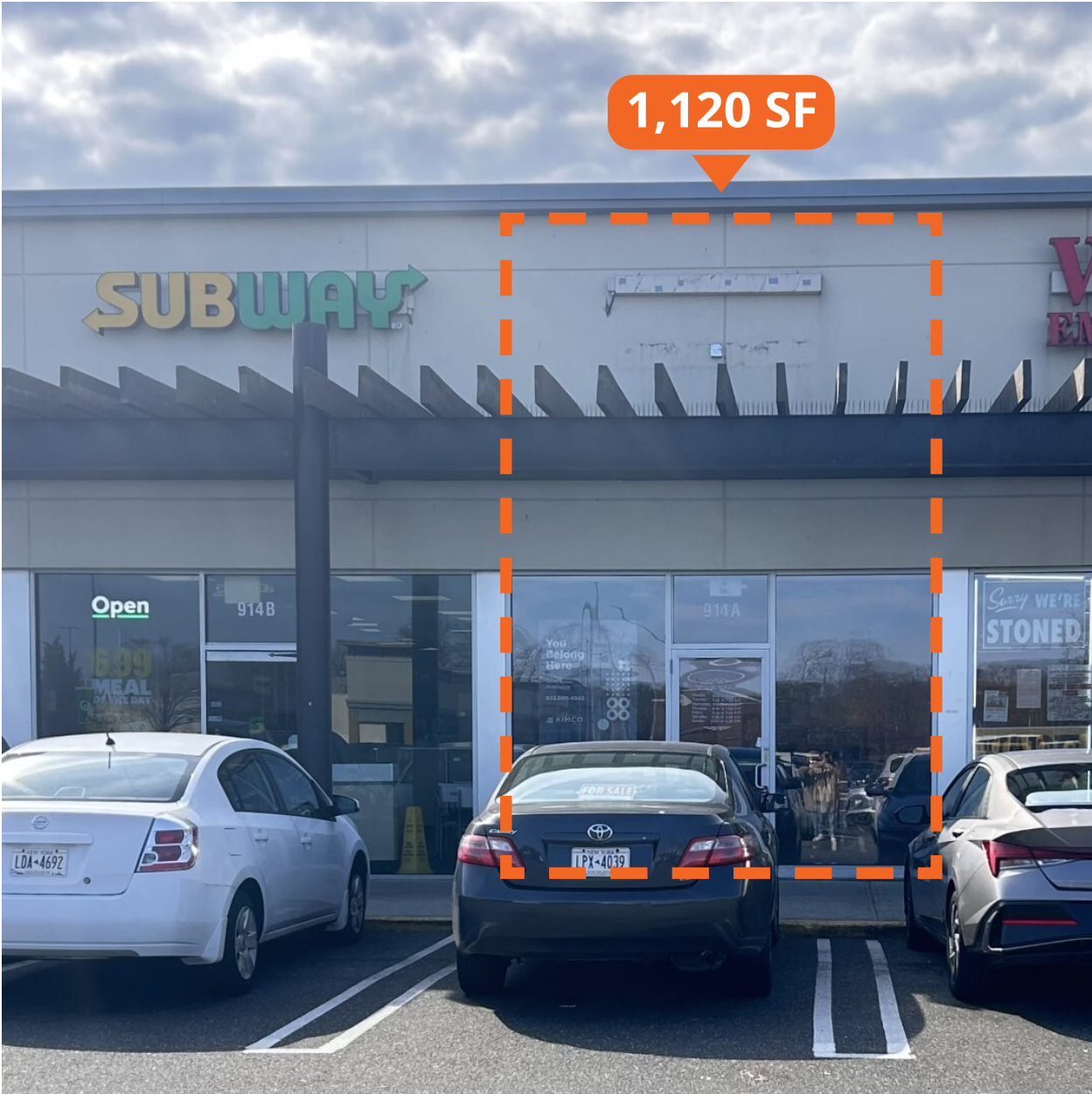
DESIGNATED
LOADING DOCK

CEILING HEIGHT
[FROM FLOOR TO BOTTOM OF DECK]
21' 5" Front
24' 4" Back

CEILING HEIGHT
[FROM FLOOR TO BOTTOM OF JOIST]
19' 0" Front
22' 1" Back

CLEAR CEILING HEIGHT
12' 0"

AVAILABLE SPACE: #22



1,120 SF

FRONT
14'

DEPTH
80'

CEILING HEIGHT
[FROM FLOOR TO CEILING]
9' 5" Front
7' 10" Back

CEILING HEIGHT
[FROM FLOOR TO BOTTOM OF DECK]
11' 9" Front
11' 2" Back

CLEAR CEILING HEIGHT
7' 10"



SPACE 4: 9,603 SF

SPACE 4: 9,603 SF



Building ID:	117780
Building Name:	Carman's Plaza
Location:	Massapequa, NY
Submitted by:	
Drawn by:	ID Plans
Date:	07/27/2022

This drawing is a general representation of the shopping center and individual spaces and should not be used as a construction document. No representations are made to the accuracy of interior or exterior dimensions, conditions or existing improvements, and the owner reserves the right to change the shopping center and individual spaces at any time and without notice. It is the responsibility of the tenant or its agent to verify actual dimensions and conditions prior to design and construction of improvements.

Lease Outline Drawing Gross Leasable Area

+/- 9,603 SF

Demising

FRONT	WIDTH	DEPTH
+/- 51'	+/- 51'	+/- 140'
SUITE 00004		

Plans Produced by:
ID PLANS

400 North Tampa St. Suite 2210
Tampa, FL 33602
Phone: (866) 657-2545
tdplans.com

© 2002

Plan is for general use and purposes only. ID Plans does not guarantee the accuracy or validity of provided information. Measurements are not intended to be architecturally valid for construction purposes or accepted as replacement for documents, drawings, or made intended or claiming to be architecturally accurate, such as blueprints. The property owner has and reserves the right and responsibility to verify, change or alter the provided information at any time for any reason.

SPACE 22: 1,120 SF

SPACE 22: 1,120 SF



Building ID:	117780
Building Name:	Carman's Plaza
Location:	Massapequa, NY
Submitted by:	
Drawn by:	ID Plans
Date:	12/20/2024

This drawing is a general representation of the shopping center and individual spaces and should not be used as a construction document. No representations made as to the accuracy of interior or exterior dimensions, conditions or existing improvements, and the owner reserves the right to change the shopping center and individual spaces at any time and without notice. It is the responsibility of the tenant or its agent to verify actual dimensions and conditions prior to design and construction of improvements.

Lease Outline Drawing Gross
Leasable Area

+/- 1,120 SF

Demising

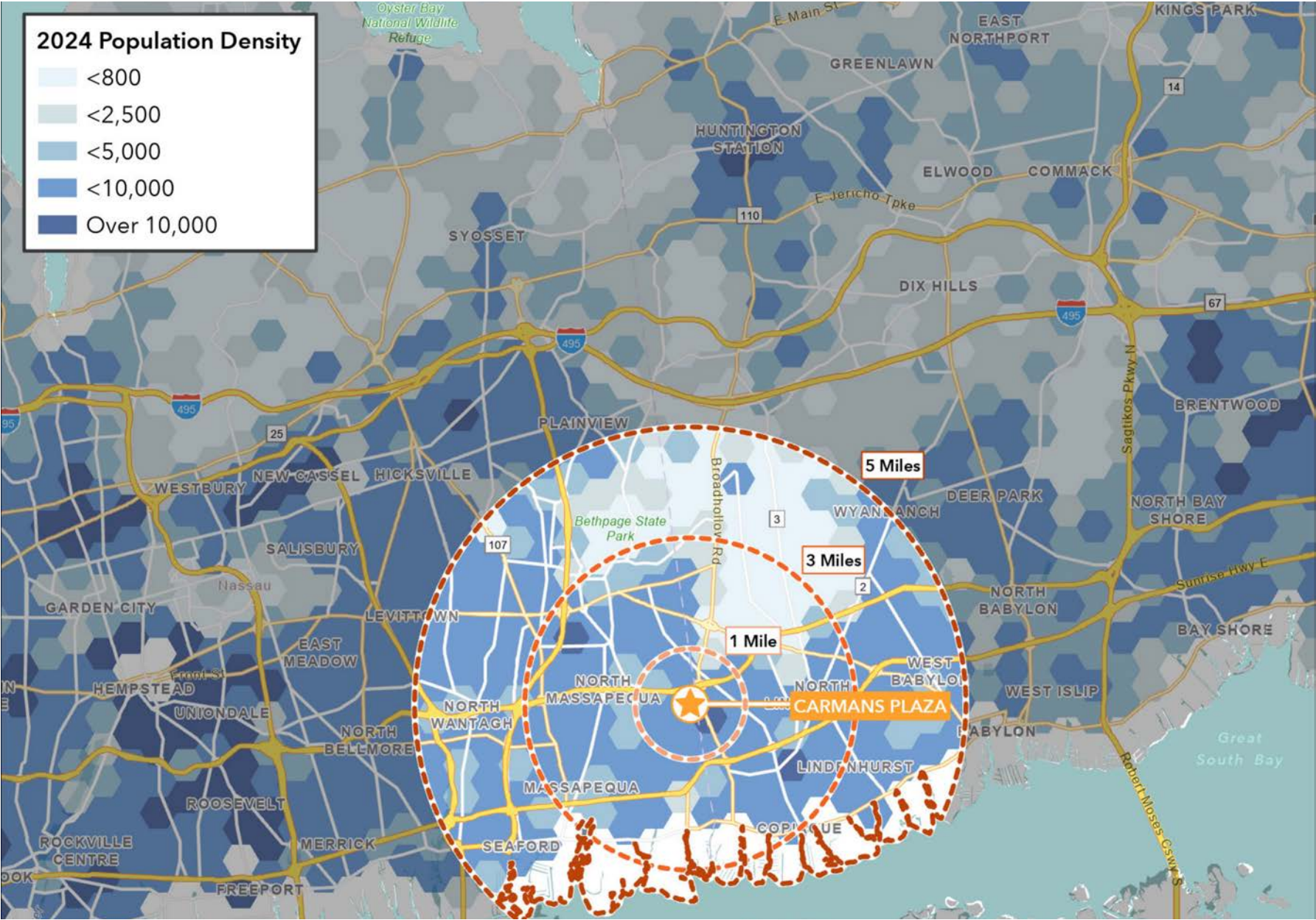
FRONT	WIDTH	DEPTH
+/- 14'	+/- 14'	+/- 80'
SUITE 00022		

Plans Produced by:
ID PLANS

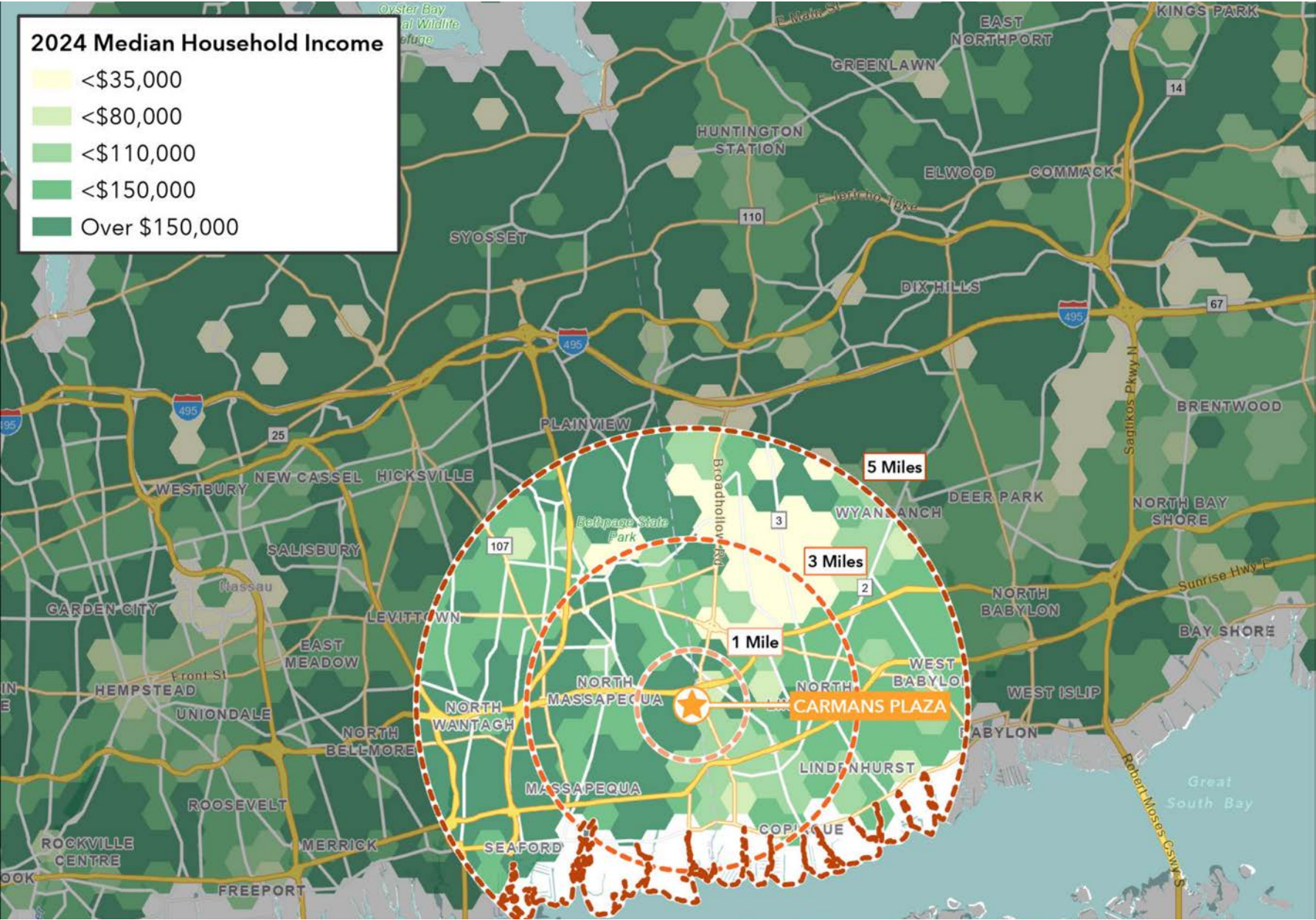
4300 West Cypress Street, Suite 160,
Tampa, Florida 33607
Phone: (866) 657-2545
idplans.com

© 2004

POPULATION DENSITY









MEDIAN HOUSEHOLD INCOME



1 MILE

3 MILES

5 MILES

 2024 Population	23,726	159,445	356,518
 2024 Daytime Population	15,928	137,303	315,404
 2024 Daytime Worker Population	4,689	60,169	143,620
 2024 Households	7,344	52,590	119,260
 2024 Median HH Income	\$126,572	\$126,437	\$130,132
 2024 Average HH Income	\$162,666	\$165,924	\$171,677

DEMOGRAPHICCOMPARISON



EXCLUSIVE AGENT(S):

STEVE GILLMAN

Steve.Gillman@tscg.com
516.312.7676

ANGEL CORDERO

Angel.Cordero@tscg.com
516.903.0432

777 WESTCHESTER AVENUE
WHITE PLAINS, NY 10604
914.328.2222
TSCG.COM