



Second floor office space in prime Pelham Rd location

- Professional suite in two-story office building featuring three private offices with large open space perfect for partitioned desks, conference room, etc.
- Ample on-site parking
- Conveniently located off I-85
- 10 minutes to GSP Airport
- 15 minutes to downtown Greenville

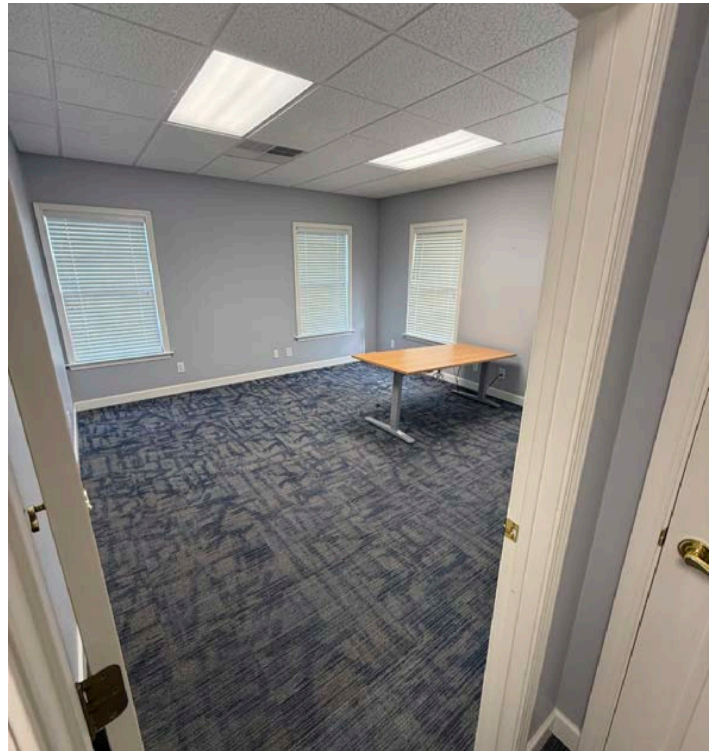
Get more information

Ned Reynolds, Vice President
+1 336.260.3148
ned.reynolds@avisonyoung.com

Will Hannah, Associate
+1 864.508.4525
will.hannah@avisonyoung.com

Property overview

| | |
|-----------------|------------------------|
| Municipality | Greenville |
| County | Greenville |
| Zoning | POD |
| Space size | ±1,850 sf |
| Asking rate | \$13.50/sf/yr |
| Lease type | NNN |
| Pass through(s) | \$4.92/sf/yr |
| Notes | 2nd floor, no elevator |

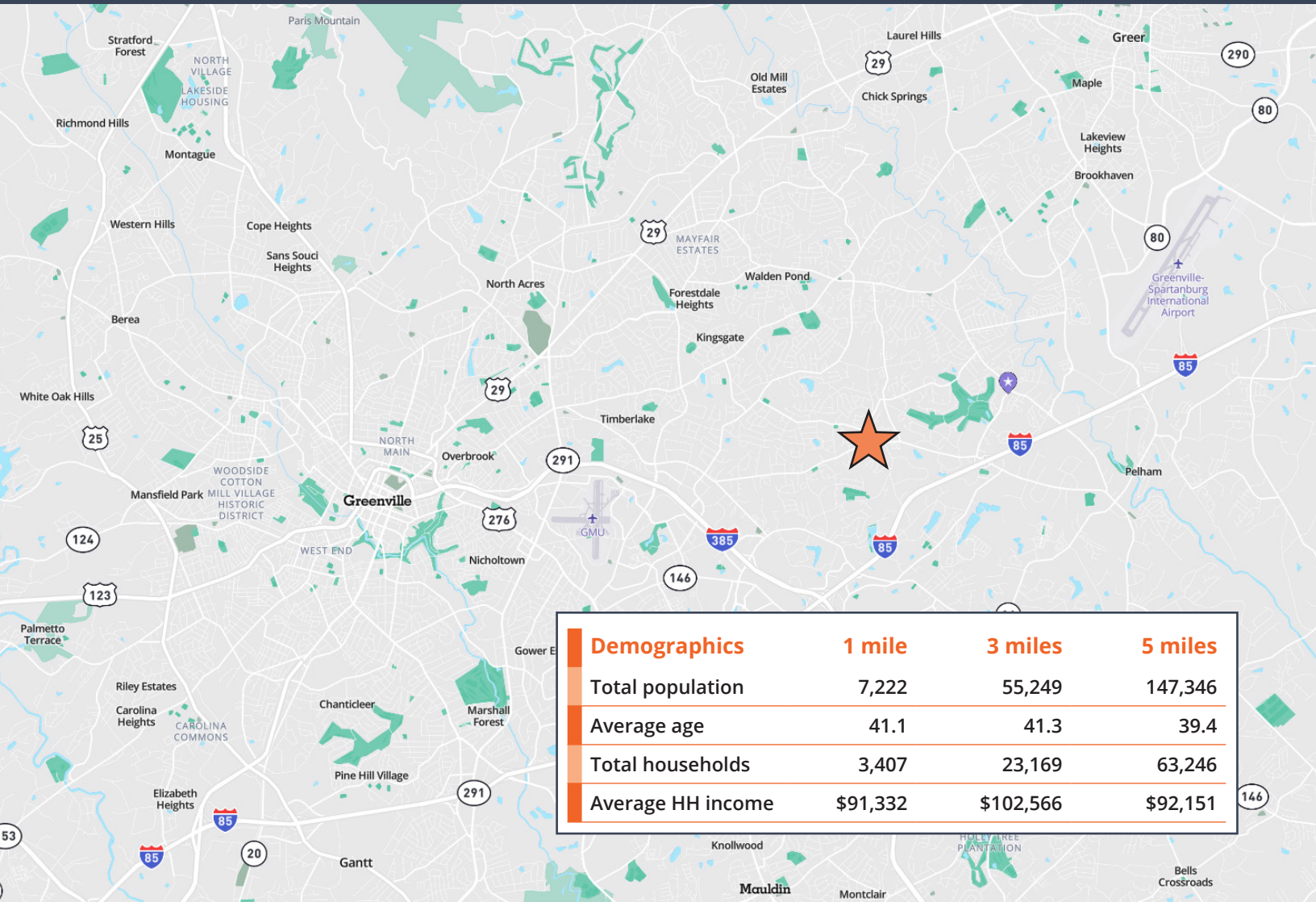


Location overview

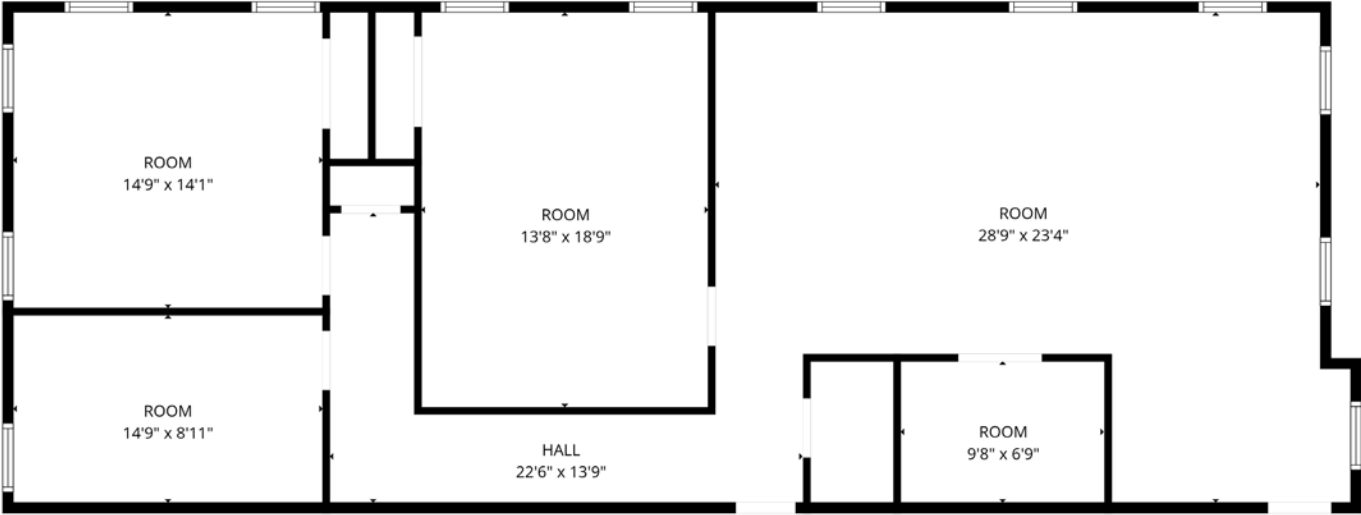
The property enjoys immediate proximity to I-85 and Pelham Road, providing seamless connectivity to Greenville, Spartanburg, and GSP International Airport. Surrounded by a mix of corporate offices, medical practices, and upscale residential communities, the area is anchored by major employers such as Michelin North America and is just minutes from the Thornblade Club. The surrounding 29615 zip code is known for its strong demographics, top-rated schools, and a growing commercial presence, making it an ideal location for businesses seeking visibility, convenience, and long-term value.

East Park at Pelham tenant mix:

- Core Financial Services
- AnnieMac Home Mortgage
- April Huguenin Studios
- Homewatch CareGivers of Greenville
- Blackwelder Law
- The Matchmaking Company
- redi-Group North America
- Crescent Mortgage Company
- ImageQuix
- Tyler Simpson: Allstate Insurance
- Appraisal Agency of Greenville
- Tuttle and Associates
- Zion Community Church
- Blue Letter Bible
- Crescent and Main boutique
- Canopy Lawn Care
- Bright Arising Home Care
- Moore Accounting & Tax services
- Moore Beauston & Woodham
- Fred Adams Tax Group
- World Awaits Cultural Tours
- Cohen Company
- Keystone Health & Wellness
- Providence Realty
- Affinity Hospice
- Berkshire Hathaway



Floorplan



Ned Reynolds
Vice President
+1 336.260.3148

Will Hannah
Associate
+1 864.508.4525