

ROUTE 28

ROUTE 28

BOY SCOUT RESERVATION RD 40'

RAMP "A" ABOVE

PLANT LIST:

BOTANICAL NAME	COMMON NAME	SIZE	QUANTITY	REMARKS
ORATAEGUS C. THERMIS "CRUZAM"	CRUZAM (CRUSADER) HAWTHORN	1-1/2" B&B	12	SPECIMEN
LAMIS PARVIFLORA	CHINESE ELM	2 1/2" B&B	13	SPECIMEN
GLEDITSIA TRACANTHOS INERMIS "IMPCOLE"	IMPERIAL HONEYLOCUST	2 1/2" B&B	12	SPECIMEN
KOELREUTERIA PANICULATA	GOLDEN RAIN TREE	2 1/2" B&B	10	SPECIMEN

NOTES:

- CONTRACTOR TO VERIFY ALL QUANTITIES.

LANDSCAPING NOTES:

PLANTS:

PLANTS SHALL CONFORM TO VARIETIES SPECIFIED IN THE PLANT LIST. PLANTS SHALL BE TRUE TO BOTANICAL NAMES, STANDARDS OF SIZE, CULTURE QUALITY FOR HIGHEST GRADES AND STANDARDS AS ADOPTED IN AMERICAN STANDARD FOR NURSERY STOCK. PLANTS SHALL HAVE NORMAL GROWTH, BE FRESHLY DUG, NURSERY-GROWN, SOUND, HEALTHY AND FREE OF DISEASE, INSECTS AND LARVAE, DELIVER WITH FEDERAL AND STATE CERTIFICATES OF INSPECTION ATTACHED. SHRUBS SHALL MEET REQUIREMENTS FOR SPREAD OR HEIGHT AS STATED IN THE PLANT LIST. MEASUREMENT FOR HEIGHT SHALL BE TAKEN FROM GROUND LEVEL TO AVERAGE HEIGHT OF TOP OF SHRUB, NOT LONGEST BRANCH. SIDE BRANCHES SHALL BE GENEROUS AND WELL-TWIGGED. THE PLANT AS A WHOLE SHALL BE WELL-BUSHED TO THE GROUND.

TOPSOIL MIX:

FOR BACKFILLING DECIDUOUS PLANT PITS, MIX 4 PARTS BY VOLUME OF TOPSOIL AND 1 PART OF DECOMPOSED MUSHROOM, CATTLE OR STABLE MANURE. FOR BACKFILLING EVERGREEN PLANT PITS, MIX 4 PARTS BY VOLUME OF TOPSOIL AND 1 PART PEAT HUMUS. TOPSOIL SHALL NOT CONTAIN ADMIXTURES OF SUBSOL AND SHALL BE CLEAN AND REASONABLY FREE FROM CLAY LUMPS WHICH MIGHT BE A HINDRANCE TO PLANTING OPERATION. TOPSOIL MUST BE BROUGHT IN FROM AN OFFSITE SOURCE.

FERTILIZERS:

FOR TREES AND SHRUBS, INCORPORATE FIVE (5) LBS. OF 6-10-4 FOR EACH CUBIC YARD OF BACKFILL. COMMERCIAL FERTILIZER SHALL BE STANDARD PRODUCTS COMPLYING WITH APPLICABLE LAWS.

GUARANTEE:

THE LIFE AND SATISFACTORY CONDITION OF ALL TREES AND SHRUBS, EXCEPT THOSE AFFECTED BY VANDALISM, DESTRUCTION BY WILDFIRE OR NATURAL ELEMENTS, SHALL BE GUARANTEED BY THE CONTRACTOR FOR A PERIOD OF NOT LESS THAN ONE (1) YEAR FROM THE DATE OF FINAL ACCEPTANCE OR SUBSTANTIAL COMPLETION.

PLANTED AREAS:

ALL PLANTED AREAS SHALL RECEIVE A 2" LAYER OF SHREDDED BARK MULCH. MULCH SHALL BE CLEAN SHREDDED BARK, FREE OF SAND, STONES, WEEDS, DEBRIS AND HARMFUL CHEMICALS, AND BE AGED FOR AT LEAST 2 YEARS.

SEEDING AREAS:

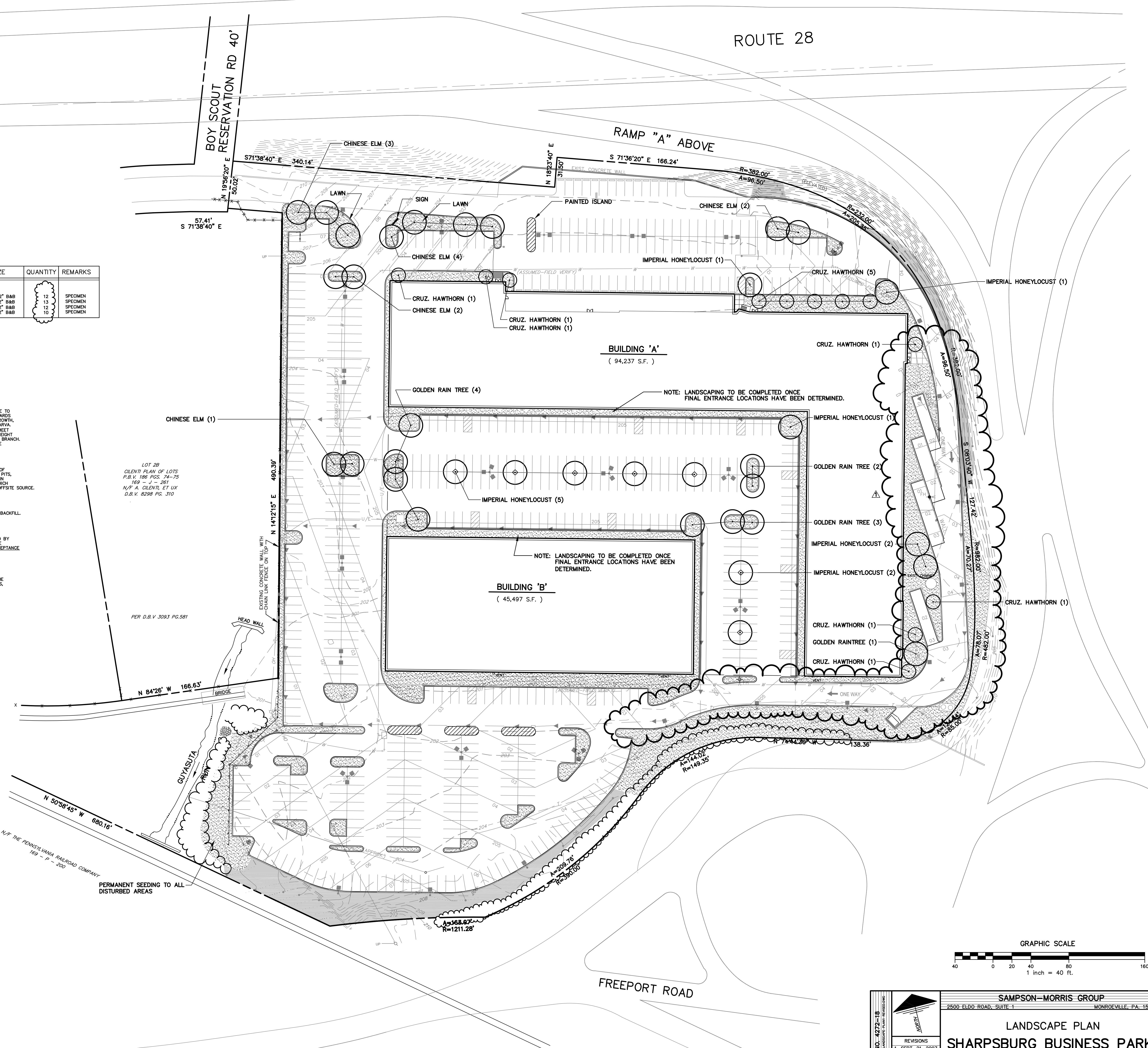
ALL DISTURBED AREAS NOT RECEIVING PLANTINGS SHALL BE SEEDING WITH SPECIFIED SEED MIX, SEE DWG. S-3, SOIL EROSION AND SEDIMENTATION CONTROL DETAILS.

MISCELLANEOUS:

- PRIOR TO PLANTING IT SHALL BE THE RESPONSIBILITY OF THE LANDSCAPE CONTRACTOR TO DETERMINE THE LOCATIONS OF ALL UTILITIES. REFER TO THE SITE UTILITIES PLAN (S-5).
- PRIOR TO SPREADING TOPSOIL, THE LANDSCAPE CONTRACTOR SHALL REMOVE ALL DEBRIS, ROCK, MORTAR, ETC. FROM ISLANDS AND LAWN AREAS.
- ALL PLANTING ISLANDS TO RECEIVE A MINIMUM OF 8" OF TOPSOIL (AFTER SETTLEMENT). ALL LAWN AREAS SHALL RECEIVE A MINIMUM OF 4" OF TOPSOIL (AFTER SETTLEMENT).
- REFER TO SITE DETAILS (S-13) FOR PLANTING DETAILS.
- PROJECT AREA SHALL BE CLEANED OF ALL FOREIGN MATTER AND PLACED IN A FIRST-CLASS CONDITION IMMEDIATELY BEFORE FINAL ACCEPTANCE OF WORK.

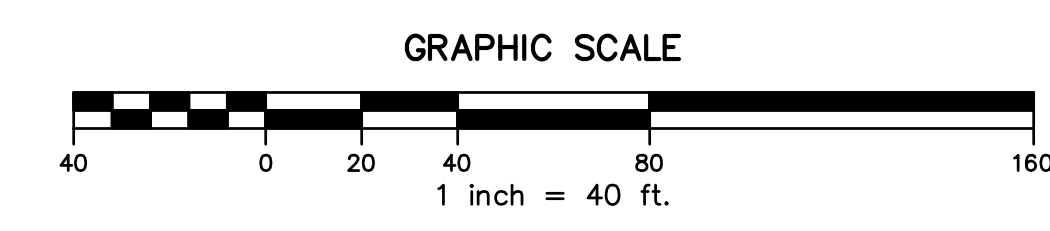
LEGEND:

- LAWN AREAS
- SLOPE SEEDING



23rd STREET EXT. (APPROX.)

MAIN STREET



SAMPSON-MORRIS GROUP 2500 ELDO ROAD, SUITE 1 MONROEVILLE, PA. 15146	SCALE 1"=40'
	DATE DEC. 11, 2006
	DRAWN BY SMW/RGG
	SHEET NUMBER S-14
LANDSCAPE PLAN SHARPSBURG BUSINESS PARK	
SHARPSBURG BOROUGH ALLEGHENY COUNTY, PA. FAHRINGER, McCARTY, GREY, INC. LANDSCAPE ARCHITECTS AND ENGINEERS MONROEVILLE, PA.	

DELETE AMUR MAPLE (2); ADJUST PARKING STALLS AROUND ISLANDS; RELOCATE PARKING ISLAND ALONG WEST PROPERTY LINE.