



NEIGHBORHOOD

**CORKTOWN**

LOCATION

**NE CORNER OF TRUMBULL  
AND LABROSSE**

SPACE TYPE

**RETAIL / OFFICE**

Located on a highly desirable stretch of Trumbull Avenue in Corktown, this 2,611-square-foot corner building is perfect for creative office or retail space. Built for a single-use tenant and meticulously maintained, this historic brick building commands a visible location at the corner of Labrosse and Trumbull in the busy retail corridor.

**ASKING RENT**

---

**\$25/SF NNN**

**SIZE**

---

**2,611 SF**

**NEIGHBORS**

---

Alpino, Folk, Meta Physica Wellness Center, Rocket Data Center, Michigan Central Station, Ford Motor Company, Level 3 Communications, Southwest Greenway, Honeybee Market, Slows BBQ, Airspace Link, Ford Motor Co.'s Book Depository, New Lab Michigan Central, Detroit Bus Company, IMA, Metropolis Cycles, Mercury Burger Bar, Grandma Bob's, Corktown Health Center, Detroit Public Safety Academy and UPS Detroit International Import Hub.

**CEILING HEIGHTS**

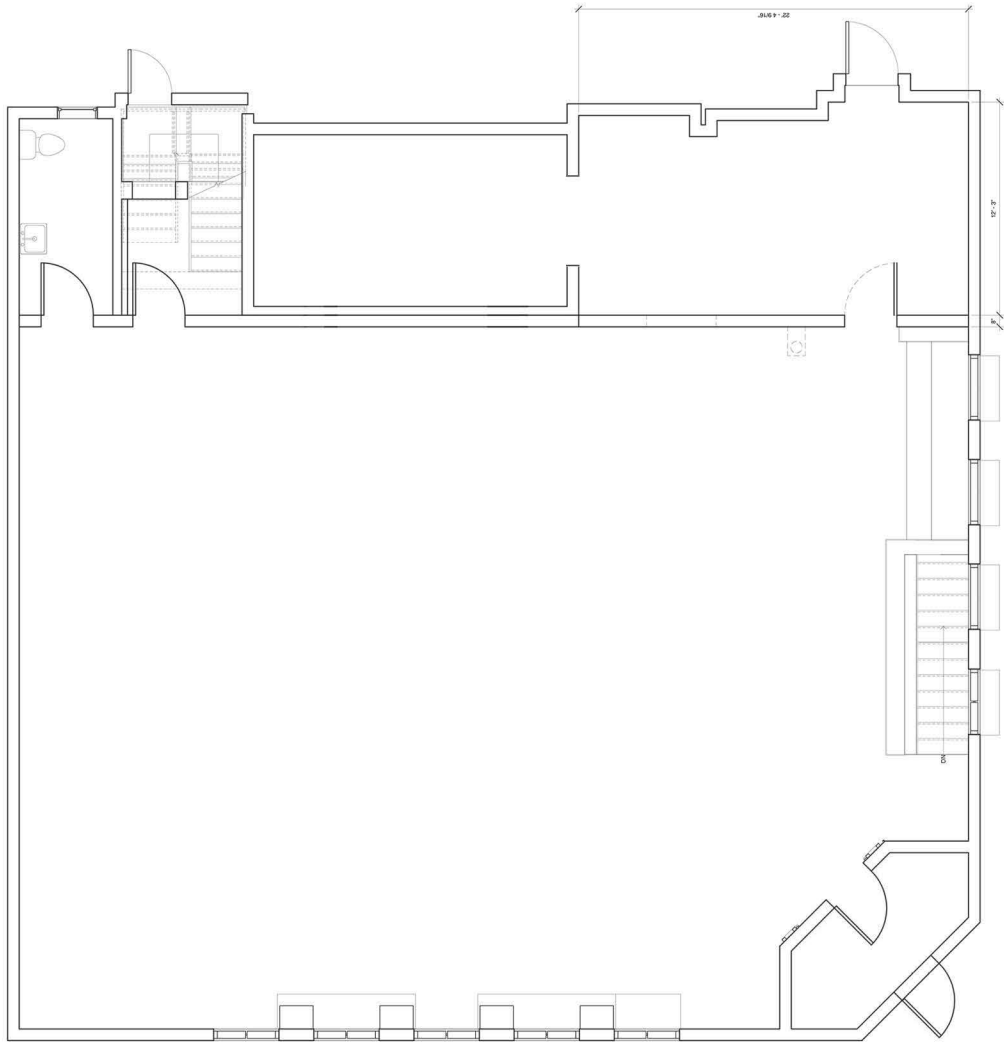
---

**24'**

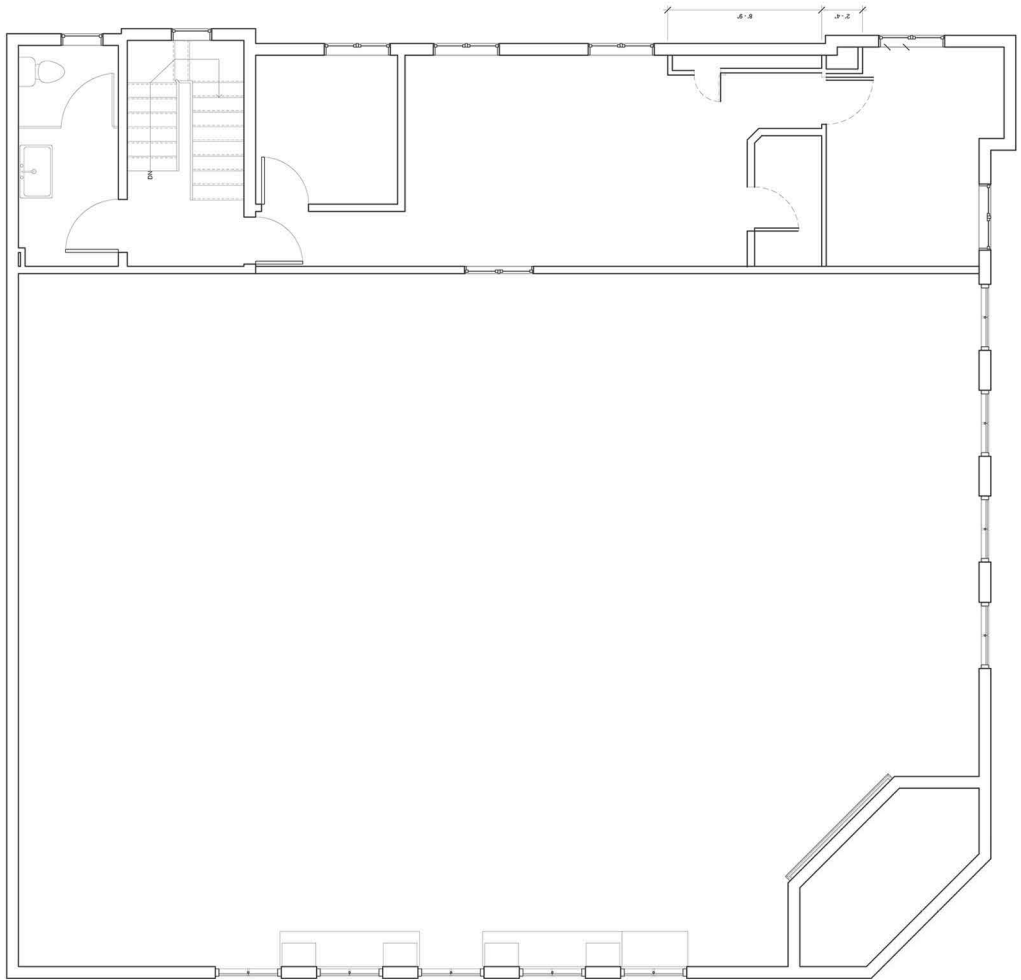
# 1500 TRUMBULL Corktown

## FEATURES

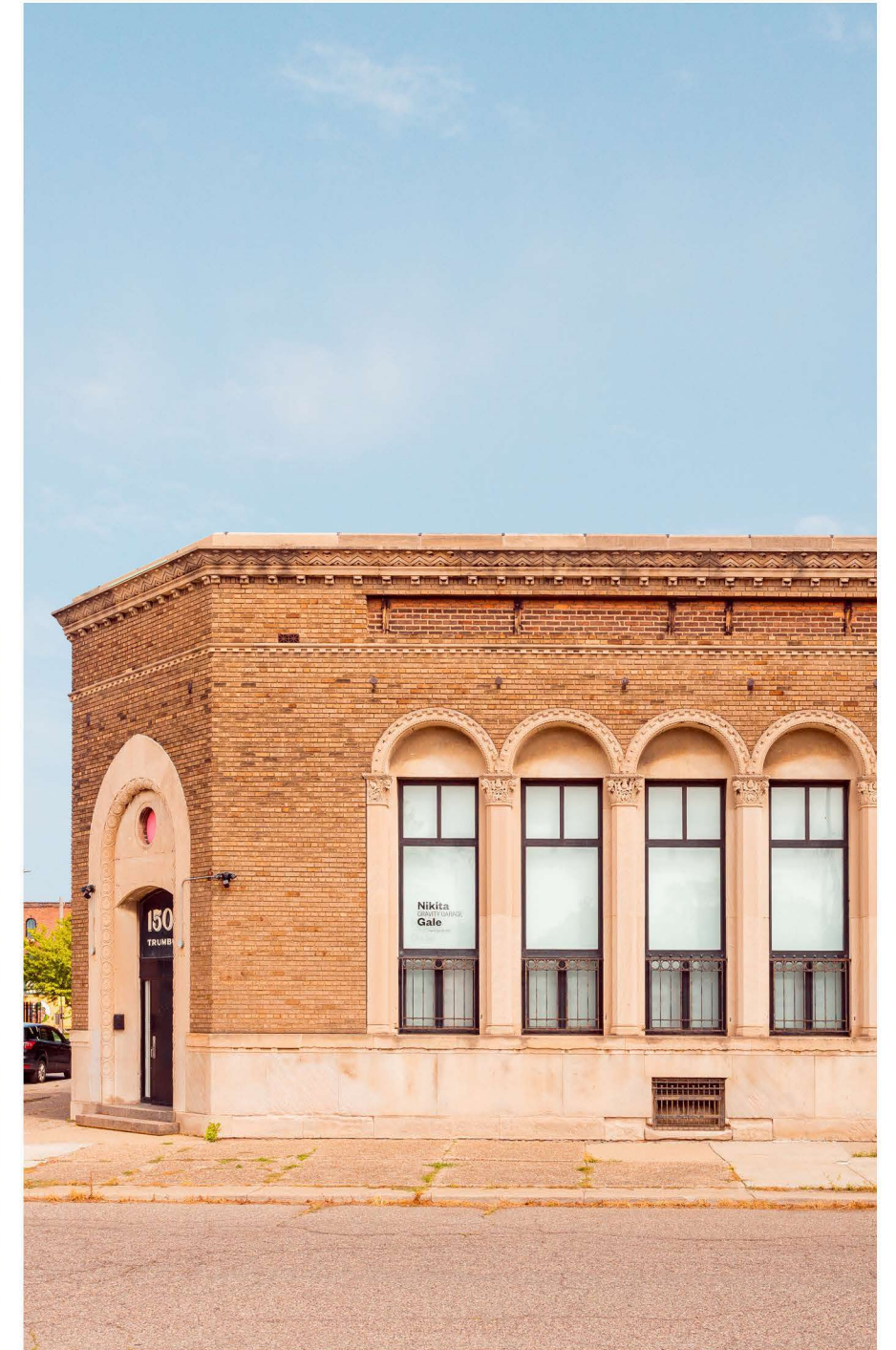
- 2,611 Square Feet
- Kitchen
- 2 Private Offices
- 1 Conference Room
- Ensuite Toilet Rooms

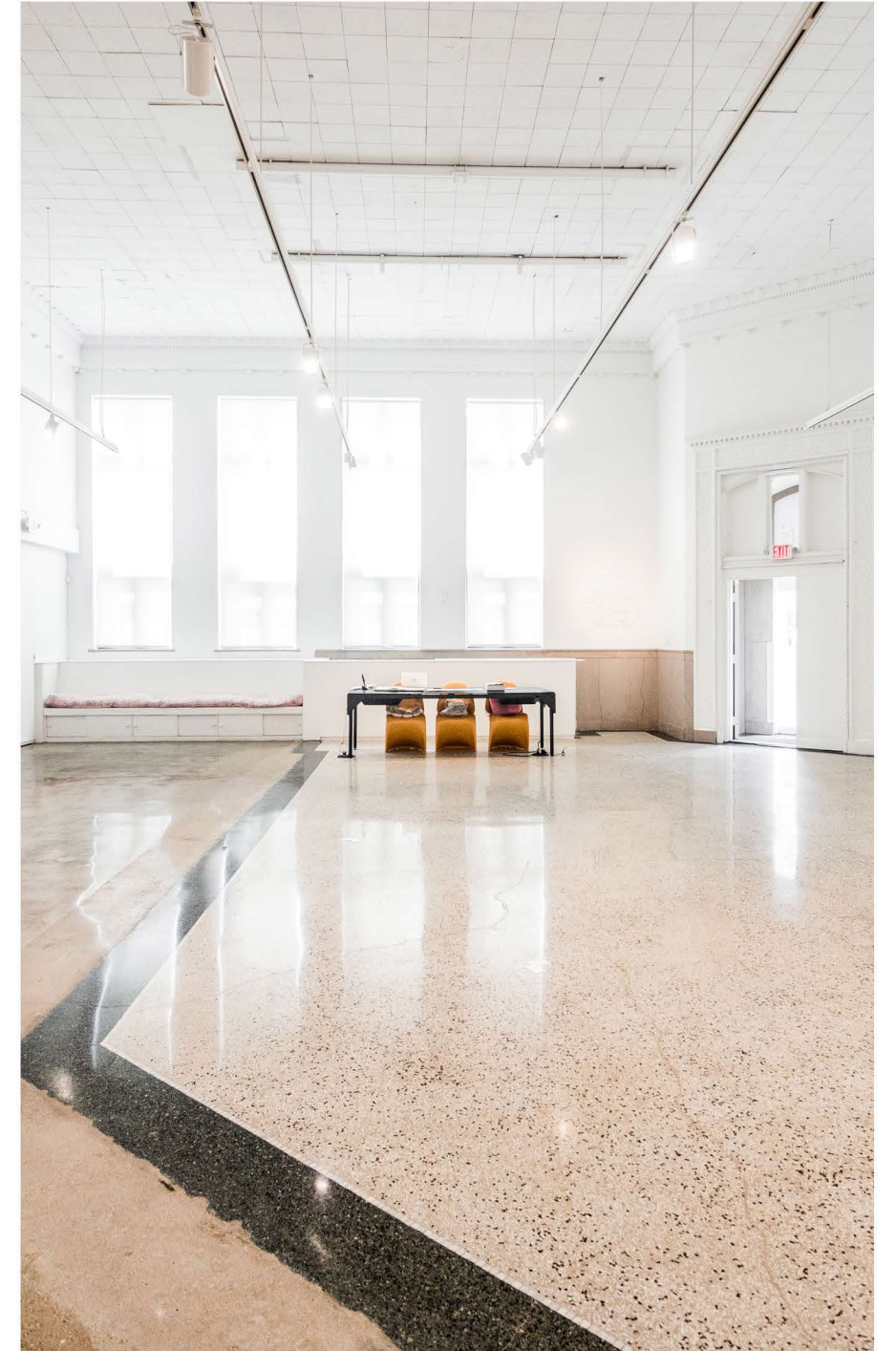


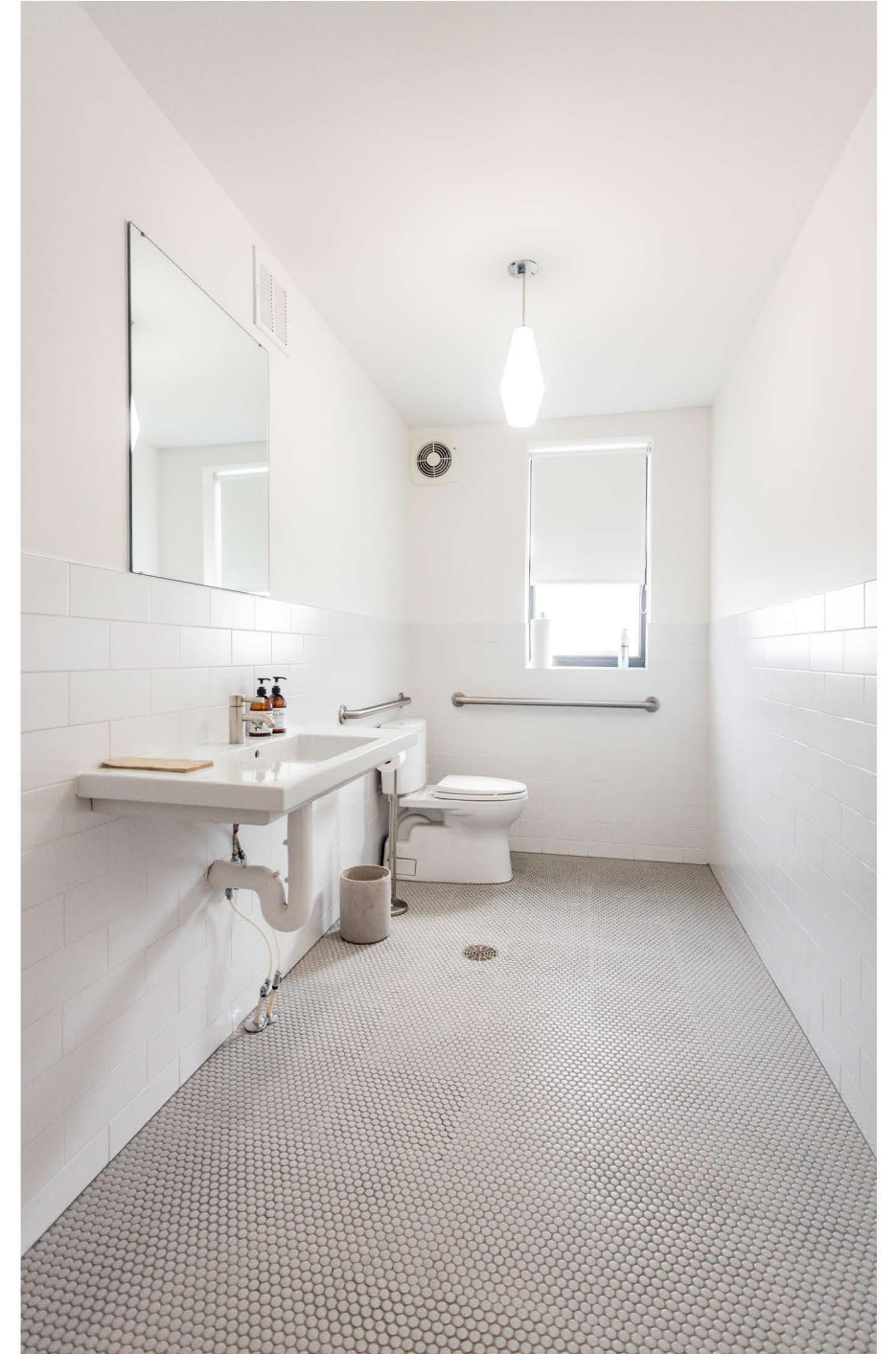
FIRST FLOOR



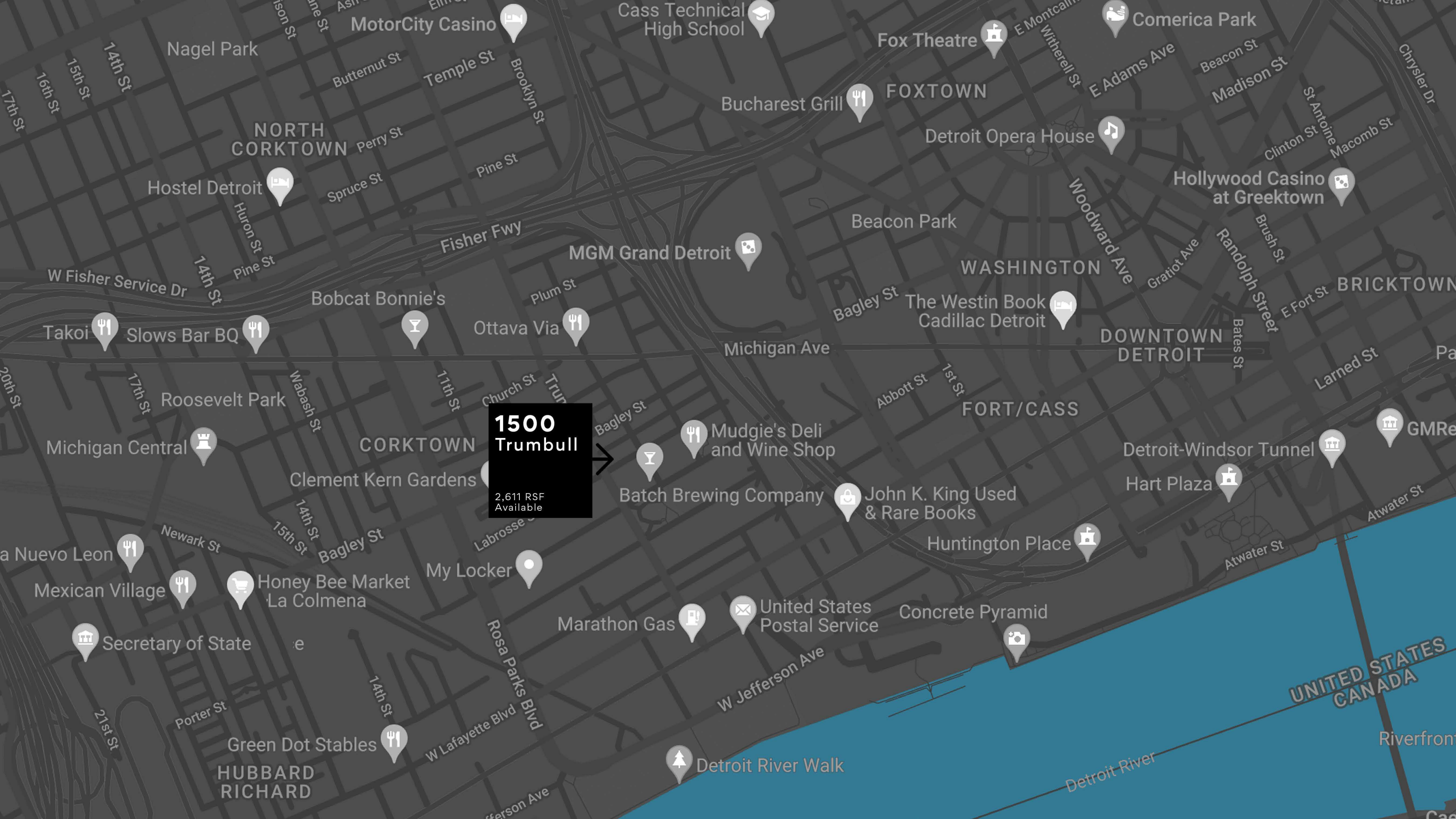
SECOND FLOOR











**1500  
Trumbull**  
2,611 RSF  
Available

MotorCity Casino

Cass Technical High School

Fox Theatre

Comerica Park

Nagel Park

NORTH  
CORKTOWN

FOXTOWN

Bucharest Grill

Detroit Opera House

Hollywood Casino  
at Greektown

Hostel Detroit

MGM Grand Detroit

Beacon Park

WASHINGTON

Bobcat Bonnie's

Ottava Via

The Westin Book  
Cadillac Detroit

DOWNTOWN  
DETROIT

Takoi

Slows Bar BQ

Michigan Ave

BRICKTOWN

Roosevelt Park

CORKTOWN

**1500  
Trumbull**

Mudgie's Deli  
and Wine Shop

FORT/CASS

Michigan Central

Clement Kern Gardens

Batch Brewing Company

John K. King Used  
& Rare Books

Detroit-Windsor Tunnel

Hart Plaza

GMRe

a Nuevo Leon

Mexican Village

Honey Bee Market  
La Colmena

My Locker

Marathon Gas

United States  
Postal Service

Concrete Pyramid

Huntington Place

Atwater St

UNITED STATES  
CANADA

Secretary of State

Marathon Gas

United States  
Postal Service

Concrete Pyramid

Green Dot Stables

HUBBARD  
RICHARD

Detroit River Walk

Detroit River

Riverfront



A TRUSTED AND RESPECTED  
MEMBER OF THE COMMUNITY,  
O'CONNOR REAL ESTATE  
BRINGS 20 YEARS OF  
EXPERIENCE AND EXPERTISE  
TO THE COMMERCIAL OFFICE  
AND RETAIL MARKET.

For more information about the space  
available at 1500 Trumbull,  
please contact O'Connor Real Estate

**Vincent Mazzola**  
+ 313 704 2678  
vincent@oconnordetroit.com

**Ryan Cooley**  
+ 313 963 9891  
ryan@oconnordetroit.com

**O'Connor** Real Estate

The information used in this marketing material was taken from sources believed to be reliable. O'Connor Real Estate makes no representation, warranty, or endorsement made as to the accuracy, reliability, adequacy, or completeness of any information or analysis contained herein and disclaims any and all liability that may be based on such information, errors therein or omissions therefrom. You and your advisors should conduct a careful and independent investigation of the property to determine your satisfaction with the suitability of the property for your needs.