



**Keegan & Coppin**  
COMPANY, INC.

FOR LEASE

2985 DUTTON AVE., SUITE 12  
SANTA ROSA, CA

**OFFICE & WAREHOUSE  
INDUSTRIAL SPACE**



Go beyond broker.

PRESENTED BY:

**SHAWN JOHNSON, MANAGING PARTNER / SIOR**  
LIC # 00835502 (707) 528-1400, EXT. 238  
[SJOHNSON@KEEGANCOPPIN.COM](mailto:SJOHNSON@KEEGANCOPPIN.COM)

**KEVIN FLAHERTY, BROKER ASSOCIATE**  
LIC # 01855674 (707) 528-1400, EXT. 246  
[KFLAHERTY@KEEGANCOPPIN.COM](mailto:KFLAHERTY@KEEGANCOPPIN.COM)





# PROPERTY DETAILS



2985 DUTTON AVE.  
SANTA ROSA, CA

## OFFICE/WAREHOUSE INDUSTRIAL SPACE FOR LEASE

### PROPERTY INFORMATION

#### BUILDING HIGHLIGHTS

##### SUITE 12

- Two(2) Finished 1st Floor Offices - 350+/- sq. ft.
- Storage Above Offices - 350+/- sq. ft.
- Warehouse - 3,350+/- sq. ft.
- **Total of 4,050+/- sq. ft.**

#### DETAILS

##### ZONING

IL - Light Industrial

##### PARKING FOR BUILDING

On-Site

##### BUILDING SF

4,050+/- SF

##### TYPE

Stran-Steel Building

##### DESCRIPTION OF PREMISES

Located on Dutton Ave just north of Bellevue Ave behind Corby Auto Row in the Southwest area of Santa Rosa. This area has a well established industrial base with many businesses in close vicinity and a hub for the contractor trades and suppliers. Access to Highway 101 is from Todd Road to the south and Hearn Ave to the north.

### LEASE TERMS

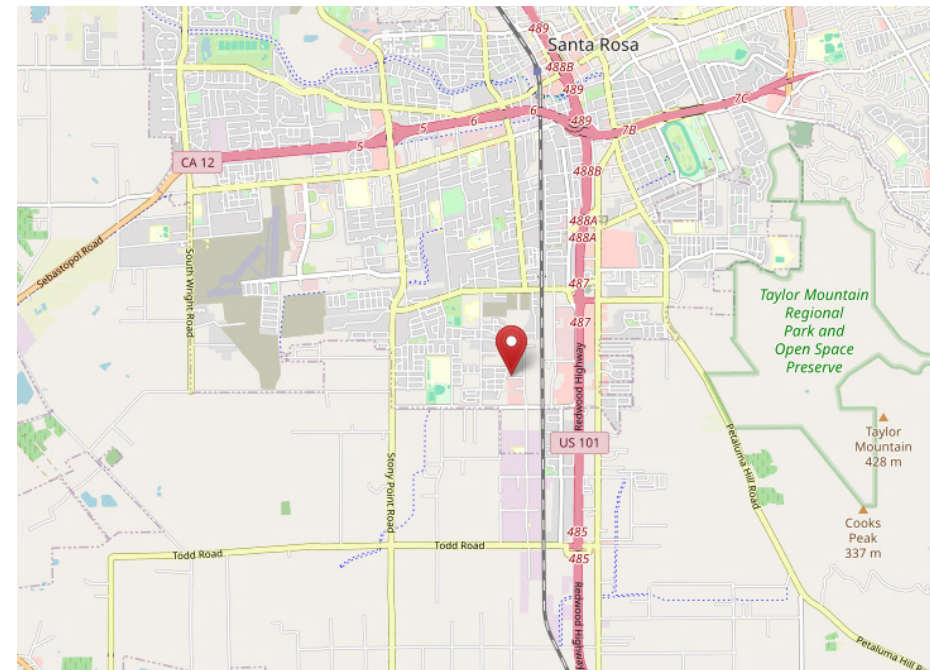
##### Rate

\$4,500.00 per Month ; \$1.11psf

##### Terms

Minimum 1 Year Lease

Deposit: 1st Month Rent + Security Deposit



**PRESENTED BY:** SHAWN JOHNSON, MANAGING PARTNER / SIOR  
KEEGAN & COPPIN CO., INC.  
LIC # 00835502 (707) 528-1400  
SJOHNSON@KEEGANCOPPIN.COM

KEVIN FLAHERTY, BROKER ASSOCIATE  
KEEGAN & COPPIN CO., INC.  
LIC # 01855674 (707) 528-1400, EXT. 246  
KFLAHERTY@KEEGANCOPPIN.COM

The above information, while not guaranteed, has been secured from sources we believe to be reliable. Submitted subject to error, change or withdrawal. An interested party should verify the status of the property and the information herein.

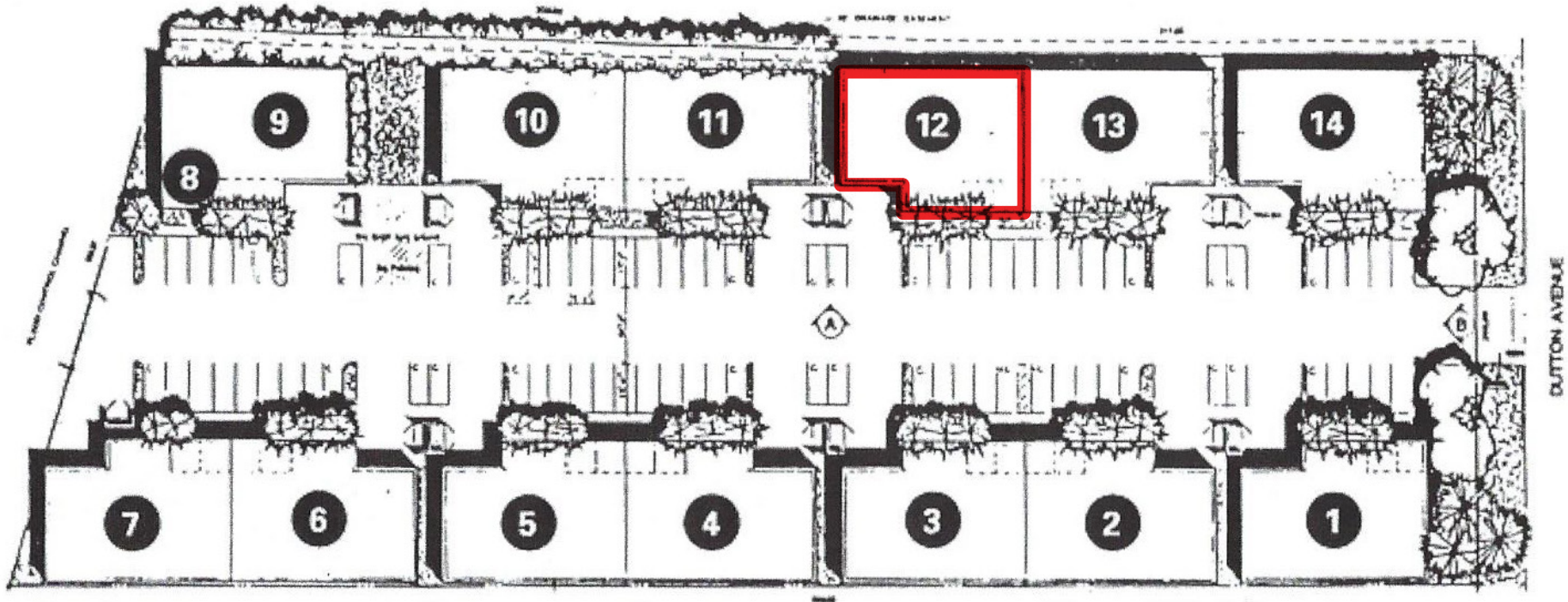


## SITE PLAN



2985 DUTTON AVE.  
SANTA ROSA, CA

OFFICE/WAREHOUSE  
INDUSTRIAL SPACE  
FOR LEASE



☐ AVAILABLE

☐ NOT AVAILABLE

**PRESENTED BY:** SHAWN JOHNSON, MANAGING PARTNER / SIOR  
KEEGAN & COPPIN CO., INC.  
LIC # 00835502 (707) 528-1400  
SJOHNSON@KEEGANCOPPIN.COM

KEVIN FLAHERTY, BROKER ASSOCIATE  
KEEGAN & COPPIN CO., INC.  
LIC # 01855674 (707) 528-1400, EXT. 246  
KFLAHERTY@KEEGANCOPPIN.COM

The above information, while not guaranteed, has been secured from sources we believe to be reliable. Submitted subject to error, change or withdrawal. An interested party should verify the status of the property and the information herein.





## AERIAL MAP



2985 DUTTON AVE.  
SANTA ROSA, CA

OFFICE/WAREHOUSE  
INDUSTRIAL SPACE  
FOR LEASE



Keegan & Coppin Co., Inc.  
1355 N Dutton Ave.  
Santa Rosa, CA 95401  
[www.keegancoppin.com](http://www.keegancoppin.com)  
(707) 528-1400

The above information, while not guaranteed, has been secured from sources we believe to be reliable. Submitted subject to error, change or withdrawal. An interested party should verify the status of the property and the information herein.

PRESENTED BY:

**SHAWN JOHNSON, MANAGING PARTNER / SIOR**  
LIC # 00835502 (707) 528-1400  
[SJOHNSON@KEEGANCOPPIN.COM](mailto:SJOHNSON@KEEGANCOPPIN.COM)

**KEVIN FLAHERTY, BROKER ASSOCIATE**  
LIC # 01855674 (707) 528-1400, EXT. 246  
[KFLAHERTY@KEEGANCOPPIN.COM](mailto:KFLAHERTY@KEEGANCOPPIN.COM)





## AREA DESCRIPTION



2985 DUTTON AVE.  
SANTA ROSA, CA

### OFFICE/WAREHOUSE INDUSTRIAL SPACE FOR LEASE



## SANTA ROSA SUMMARY

Santa Rosa, California is the county seat of Sonoma County. It is the largest city in the North Bay Area and all of California's Wine Country. The city of Santa Rosa is the North Bay's premier location and as a business and service hub, Santa Rosa is the economic engine that drives the region.

As the largest city between Portland and San Francisco, Santa Rosa serves a four county region as the hub for technology and entrepreneurial businesses, retail, banking and employment. Santa Rosa has a dynamic and well-balanced economy, anchored by strengths in tourism, high-tech manufacturing and retail. Residents enjoy a superb quality of life while employers benefit from a skilled workforce. Santa Rosans have a deep appreciation for the arts, education, conscientious business development and quality living.

The city of Santa Rosa offers a one-stop permitting process, easy access to Economic Development program staff and Community Development staff, collaborative partnerships with key business players; from our local chambers of commerce, the higher education institutes, brokers, benchmark industries, and community organizations to a global venture community, just to name a few.

The city of Santa Rosa is conveniently located just 55 miles north of San Francisco via the Golden Gate Bridge. Santa Rosa is a main shopping hub for the

surrounding neighborhoods near and along the 101 corridor, such as Petaluma, Rohnert Park, Windsor, Sonoma, Healdsburg, and Sebastopol. Santa Rosa has several prominent shopping districts, including Downtown, Santa Rosa Avenue, and Montgomery Village, offering a variety of general retail, boutique shops, dining, and entertainment. There are two regional shopping malls, Coddington Mall and Santa Rosa Plaza.

Home to approx. 500,000 people, Sonoma County is a prime location for tourism as well as residence. Just a short drive from the San Francisco Bay Area, there are nine incorporated cities in the county, in addition to seventeen unincorporated areas. The city of Santa Rosa is the most populous area, home to approximately one-third of the county's population and was recently named as one of the nation's "most livable communities" by Partners for Livable Communities.

Sonoma County's unemployment rate is one of the lowest in California and the county continues to show long-term job growth in the health care, hospitality and business service sectors. For the leisure, hospitality, educational and health services, which includes trade schools, social workers and health care professionals, has seen employment growth improve on a year-over-year basis. And business and professional services jobs have increased from a year earlier. In addition, new housing continues to increase throughout the county, while job growth and taxable sales also continue to rise.

**PRESENTED BY:** **SHAWN JOHNSON, MANAGING PARTNER / SIOR**  
**KEEGAN & COPPIN CO., INC.**  
LIC # 00835502 (707) 528-1400  
SJOHNSON@KEEGANCOPPIN.COM

**KEVIN FLAHERTY, BROKER ASSOCIATE**  
**KEEGAN & COPPIN CO., INC.**  
LIC # 01855674 (707) 528-1400, EXT. 246  
KFLAHERTY@KEEGANCOPPIN.COM

The above information, while not guaranteed, has been secured from sources we believe to be reliable. Submitted subject to error, change or withdrawal. An interested party should verify the status of the property and the information herein.