

# For Lease

📍 Unit 6, 1001 Roosevelt Avenue, Carteret, NJ

🏠 17,203 SF For Lease



## Get in Touch

**Jordan Metz**

Senior Vice President

**973-493-0385**

[jordan@metzindustrial.com](mailto:jordan@metzindustrial.com)

**Benito Abbate**

Senior Associate

**908-655-8331**

[ben@metzindustrial.com](mailto:ben@metzindustrial.com)

**James Friel**

Sales Associate

**908-305-9001**

[james@metzindustrial.com](mailto:james@metzindustrial.com)



# Property Highlights

## Property Features

 **17,203 SF Available** | 2,569 SF Office

 **4 Tailboards**

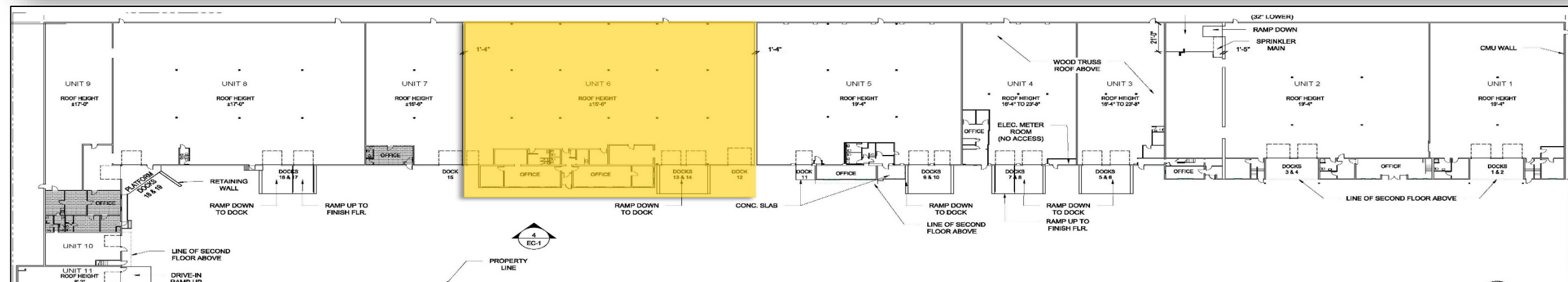
 **15' Clear**

 **Wet Sprinkler** | Ample Power

 **Ample Surface** Parking

## Location Highlights

- **Urban Enterprise Zone**
- Near Exit 12 of **NJ Turnpike, Routes 1-9 & I-78**
- Close Proximity to **Goethals Bridge**
- Minutes to **Newark Liberty Airport & Port Elizabeth/Newark**









# Location Map

★ 1001 Roosevelt Avenue, Carteret, NJ

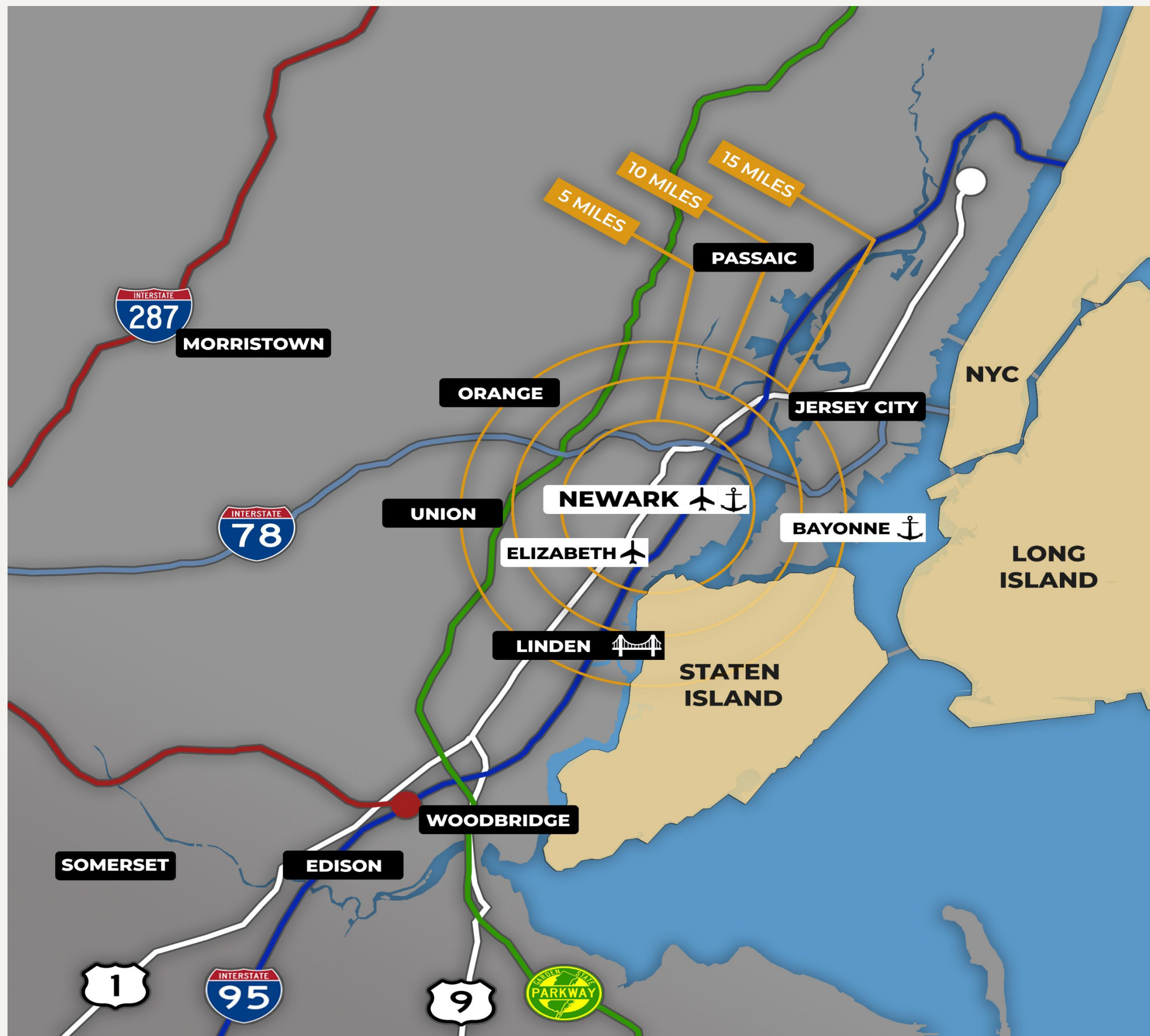


## Proximity Highlights

- Urban Enterprise Zone
- Near Exit 12 of NJ Turnpike, Routes 1-9 & I-78
- Close Proximity to Goethals Bridge
- Minutes to Newark Liberty Airport & Port Elizabeth/Newark







★ 1001 Roosevelt Avenue, Carteret, NJ

The city of **Carteret, NJ** is in a prime port-adjacent location with access to:

- **Newark Liberty Airport**
- **Port Elizabeth/Newark**
- Staten Island via the **Goethals Bridge**

With road access to:

- **Route 1-9**
- **Exit 12 NJ Turnpike / I-95**
- **I-78**





For more information please contact  
our exclusive brokers:

**Jordan Metz**

Senior Vice President

**973-493-0385**

jordan@metzindustrial.com

**Benito Abbate**

Senior Associate

**908-655-8331**

ben@metzindustrial.com

**James Friel**

Sales Associate

**908-305-9001**

james@metzindustrial.com



This document has been prepared by Bussel Realty Corp. based on public information. Bussel Realty Corp. makes no guarantees, representations or warranties of any kind, expressed or implied, regarding the information including, but not limited to, warranties of content, accuracy and reliability. Any interested party should undertake their own inquiries as to the accuracy of the information. Bussel Realty Corp. excludes unequivocally all inferred or implied terms, conditions and warranties arising out of this document and excludes all liability for loss and damages arising there from. This publication is the copyrighted property of Bussel Realty Corp. and/or its licensor(s).