



For Sale
Iconic and Prestigious Historical Building
Former Bank Headquarters

Offered for sale for the first time in over 25 years. This highly visible landmark and iconic building which sets the landscape of Shawsheen Square is an ideal location for owner occupancy and a corporate headquarter. The three story building was occupied for decades by Lawrence Savings Bank as corporate office and banking branch. Ample paved parking and covered drive-through lanes would make this an ideal re-use.

Recent mechanical upgrades and replacement along with its history of detailed maintenance show throughout the property.

The interior includes about 13,500 square feet over the three floors.

Call Larry Marocco at 978.479-3137 for additional details.

MINCO Corporation

231 Sutton Street
North Andover, MA
01845
978 687-6200
Ext. 227

Email:
lmarocco@mincocrp.com

www.mincocrp.com

362 North Main Street, Andover, MA

Property Details



Building Size:13,500 +/-sq. ft.

Land Area:24,830 +/- sf

Construction: Masonry/Steel

Age:1920

Design: Office/Retail/Bank

Roof: Slate

Electric:600 amp

Heat/AC:Gas / Electric

Water:Public

Sewer:Public

Fire Protection: Hard-Wired Modern

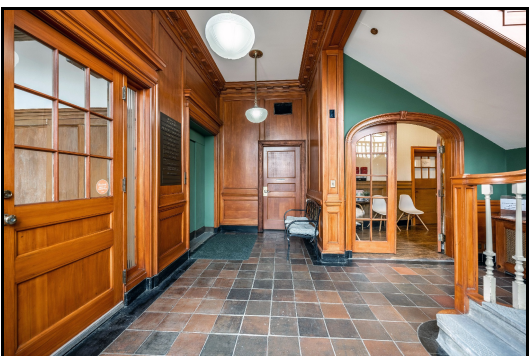
Parking:30 Lined Spaces

Elevator: 4-stop Passenger



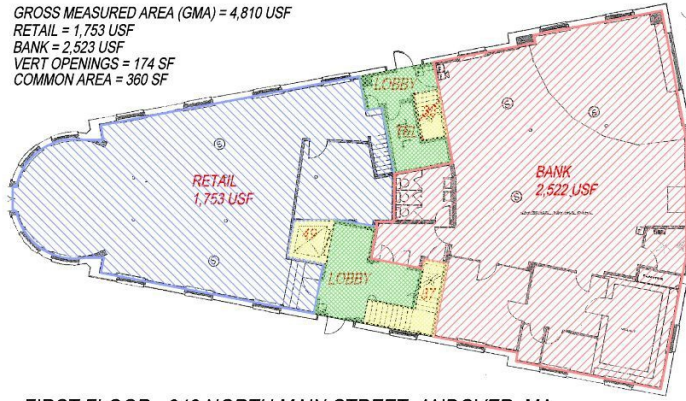
MINCO Corporation

No warranty or representation, express or implied, is made as to the accuracy of the information contained herein, and same is submitted subject to errors, omissions, change of price, rental or other conditions, withdrawal without notice, and to any special listing conditions imposed by our principals.



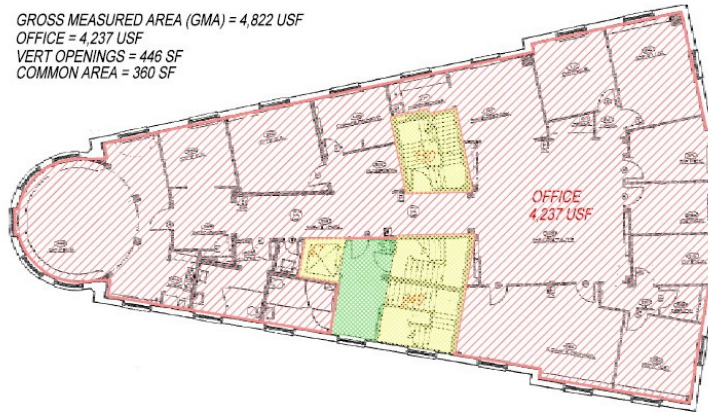


GROSS MEASURED AREA (GMA) = 4,810 USF
RETAIL = 1,753 USF
BANK = 2,523 USF
VERT OPENINGS = 174 SF
COMMON AREA = 360 SF



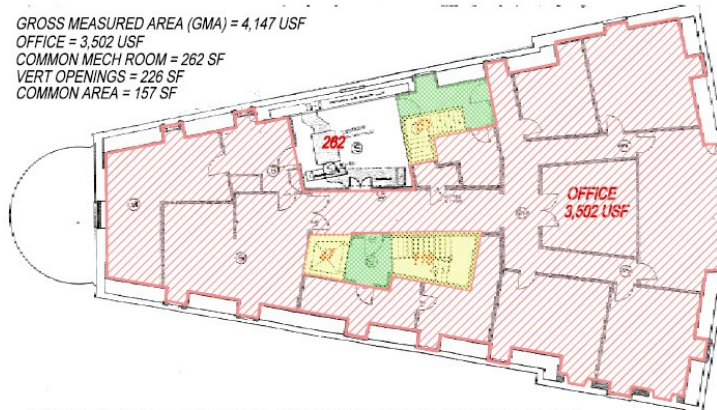
FIRST FLOOR - 342 NORTH MAIN STREET, ANDOVER, MA

GROSS MEASURED AREA (GMA) = 4,822 USF
OFFICE = 4,237 USF
VERT OPENINGS = 446 SF
COMMON AREA = 360 SF



SECOND FLOOR - 342 NORTH MAIN STREET, ANDOVER, MA

GROSS MEASURED AREA (GMA) = 4,147 USF
OFFICE = 3,502 USF
COMMON MECH ROOM = 262 SF
VERT OPENINGS = 226 SF
COMMON AREA = 157 SF



THIRD FLOOR - 342 NORTH MAIN STREET, ANDOVER, MA