

# Retail For Sublease

±1,150 SF or ±1,017 SF

**Available Nov 1, 2024**

# Marsh Creek Village Shopping Center

Building C, Suite 109/110

6780 Roswell Road, Atlanta, GA 30328



## Property Highlights

- **Sublease Available November 1, 2024**
- Rate: \$28.81 PSF through 5/14/2025 + \$7.50 PSF NNN's
- ± 2,157 SF combined Space in Suite C-109 & C-110
- Three (3)% annual increases runs through 5/14/2025
- Great location in Sandy Springs with strong visibility and over 600 feet of frontage on Roswell Road
- Year built 2010, Easy Ingress/Egress
- Over 30,000 cars per day pass by on Roswell Road

<b>KEY FACTS</b> 2.1 Average Household Size 93,955 Population 37 Median Age		<b>ROSWELL ROAD TRAFFIC COUNT</b> 32,800 Per Day <b>ANNUAL GROWTH RATE</b> 1.5%	
<b>BUSINESS</b> 175,200 Total Daytime Population 134,380 Total Employees		<b>INCOME</b> \$ 87,286 Median Household Income \$60,566 Per Capita Income	

The information contained herein has been received from sources considered reliable, but no liability is assumed by Richard Bowers & Co. or its Agents for errors and omissions.

**Richard Bowers & Co.**  
 260 Peachtree Street | Suite 2400  
 Atlanta, GA 30303  
 (404) 816-1600  
 www.richardbowers.com



### For More Information contact

**Exclusive Agent:**  
**Jeff McMullen**  
 (770) 380-6538 - Mobile  
 (jmcullen@richardbowers.com)

# Retail For Sublease

±1,150 SF or ±1,017 SF

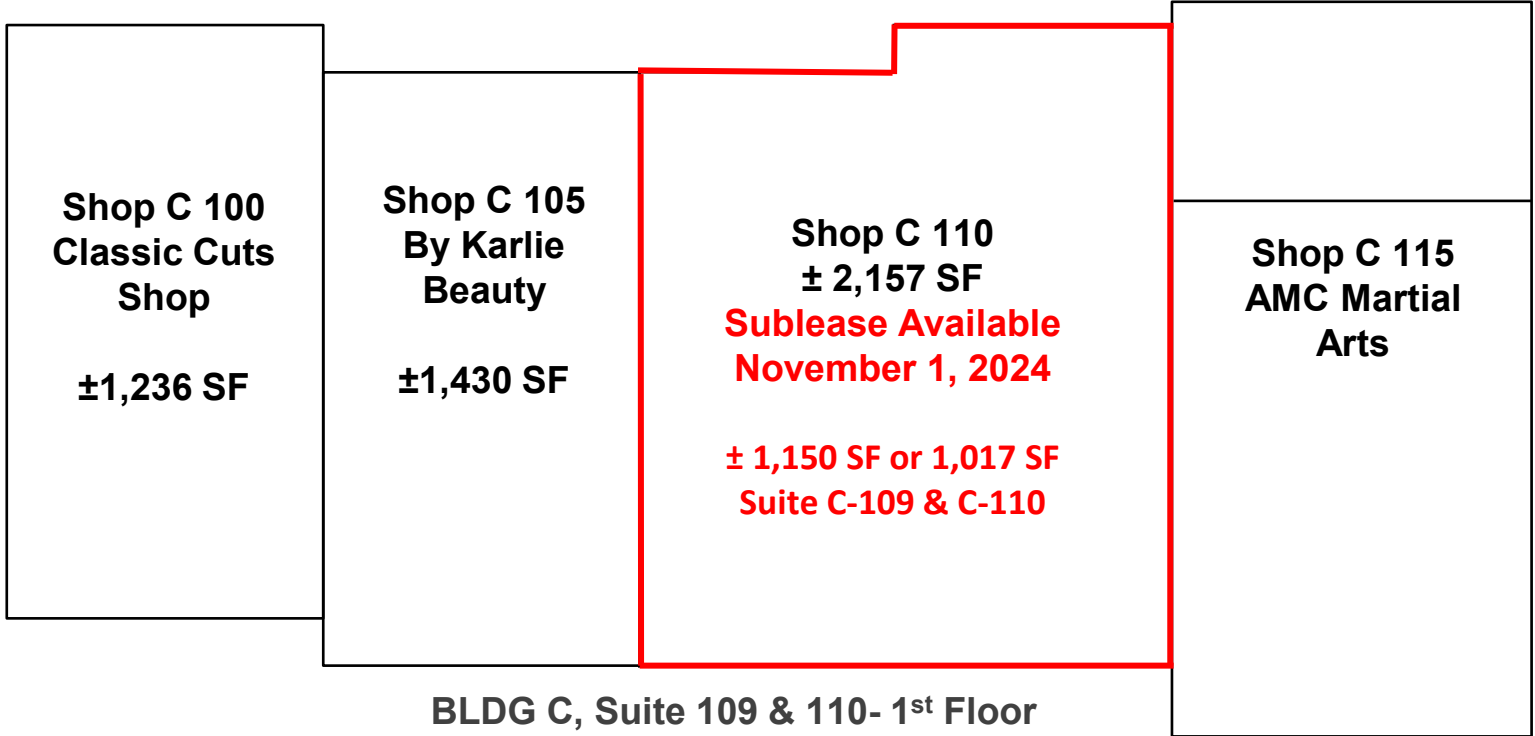
**Available Nov 1, 2024**

# Marsh Creek Village Shopping Center

Building C, Suite 109/110

6780 Roswell Road, Atlanta, GA 30328

## SITE PLAN



Suite 110



Both Suites As Viewed From  
Suite 109



Suite 109

The information contained herein has been received from sources considered reliable, but no liability is assumed by Richard Bowers & Co. or its Agents for errors and omissions.



**Richard Bowers & Co.**  
260 Peachtree Street | Suite 2400  
Atlanta, GA 30303  
(404) 816-1600  
[www.richardbowers.com](http://www.richardbowers.com)



For More Information contact

Exclusive Agent:

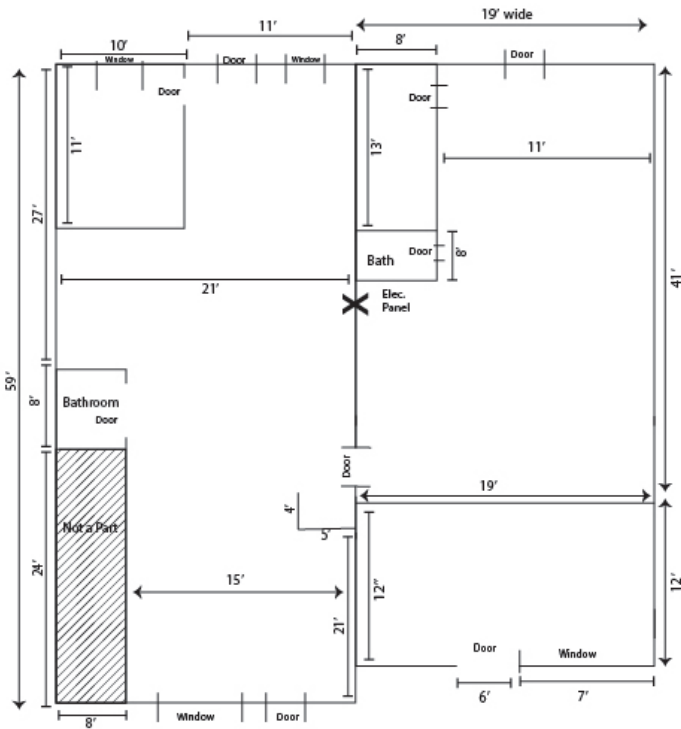
**Jeff McMullen**  
(770) 380-6538 - Mobile  
[jmcmullen@richardbowers.com](mailto:jmcmullen@richardbowers.com)

**Retail For Sublease**  
 ±1,150 SF or ±1,017 SF  
**Available Nov 1, 2024**

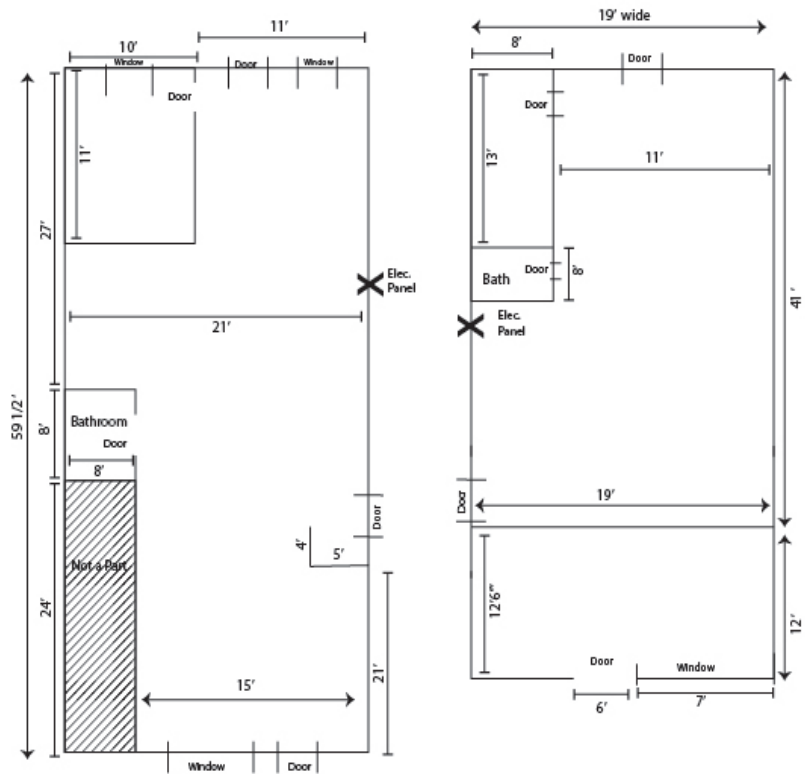
**Marsh Creek Village Shopping Center**  
 Building C, Suite 109/110  
 6780 Roswell Road, Atlanta, GA 30328

## FLOOR PLANS

**Suite C 109 & 110 combined, ± 2,157 sf**



**Suite C 109 & C 110**



Suite 110  
 1,150 SF

**Suite C 109**  
 ±1,150 sf

Suite 109  
 1,017 SF

**Suite C 110**  
 ±1,017 sf

The information contained herein has been received from sources considered reliable, but no liability is assumed by Richard Bowers & Co. or its Agents for errors and omissions.



**Richard Bowers & Co.**  
 260 Peachtree Street | Suite 2400  
 Atlanta, GA 30303  
 (404) 816-1600  
 www.richardbowers.com



**For More Information contact**

**Exclusive Agent:**

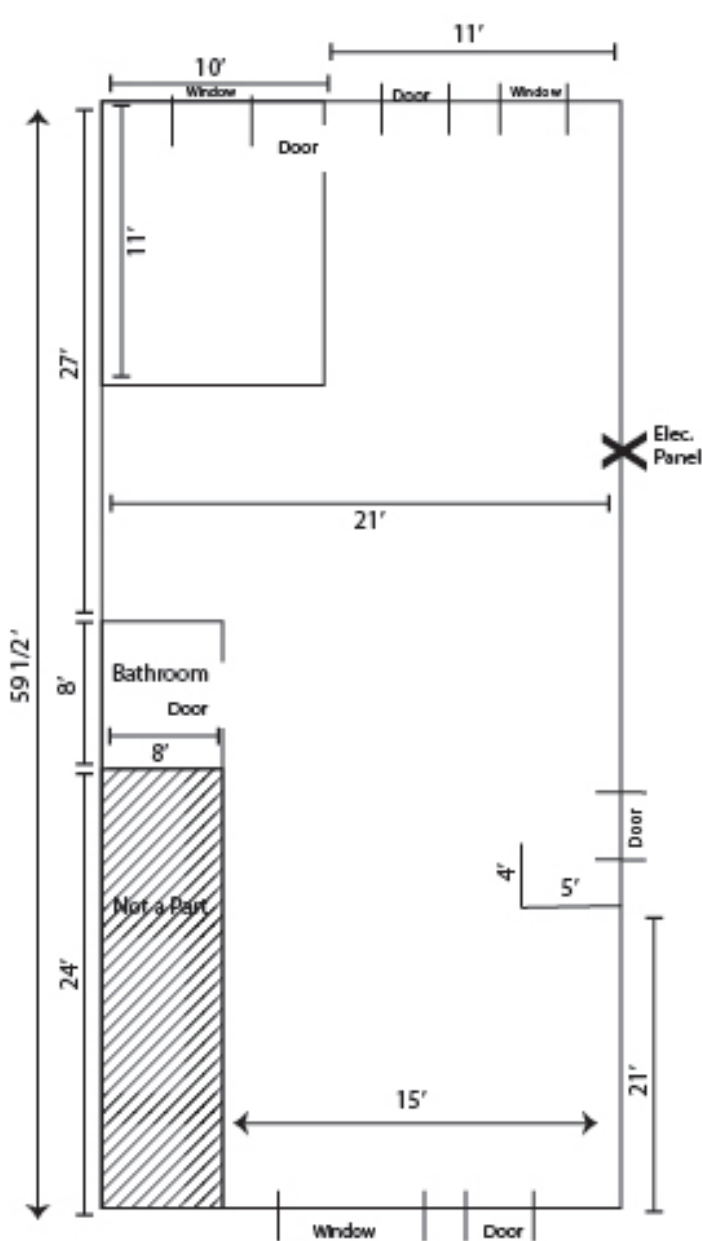
**Jeff McMullen**  
 (770) 380-6538 - Mobile  
 (jmcullen@richardbowers.com)

**Retail For Sublease**  
±1,150 SF or ±1,017 SF  
**Available Nov 1, 2024**

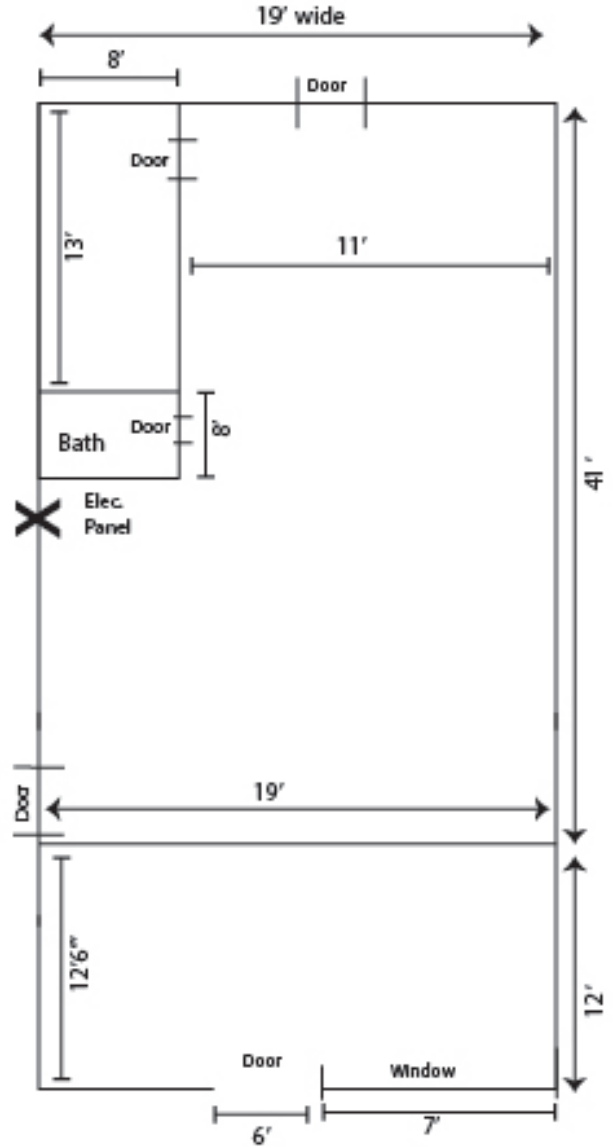
**Marsh Creek Village Shopping Center**  
Building C, Suite 109/110  
6780 Roswell Road, Atlanta, GA 30328

## FLOOR PLANS

Suite C 109 & C 110



**Suite C 109**  
±1,150 sf



**Suite C 110**  
±1,017 sf

The information contained herein has been received from sources considered reliable, but no liability is assumed by Richard Bowers & Co. or its Agents for errors and omissions.



**Richard Bowers & Co.**  
260 Peachtree Street | Suite 2400  
Atlanta, GA 30303  
(404) 816-1600  
www.richardbowers.com



For More Information contact

Exclusive Agent:

**Jeff McMullen**  
(770) 380-6538 - Mobile  
jmcullen@richardbowers.com