

THE ALL BUSINESS PARK

6723 – 6825 THEALL ROAD, HOUSTON, TX 77066



**WILLOWBROOK / CYPRESS
SUBMARKET**



**GREAT ACCESS TO TOMBALL
PARKWAY & BELTWAY 8**



18' CLEAR HEIGHT



CLIMATE-CONTROLLED WAREHOUSE



**OVERSIZED 12'X14' GRADE LEVEL
LOADING DOORS**



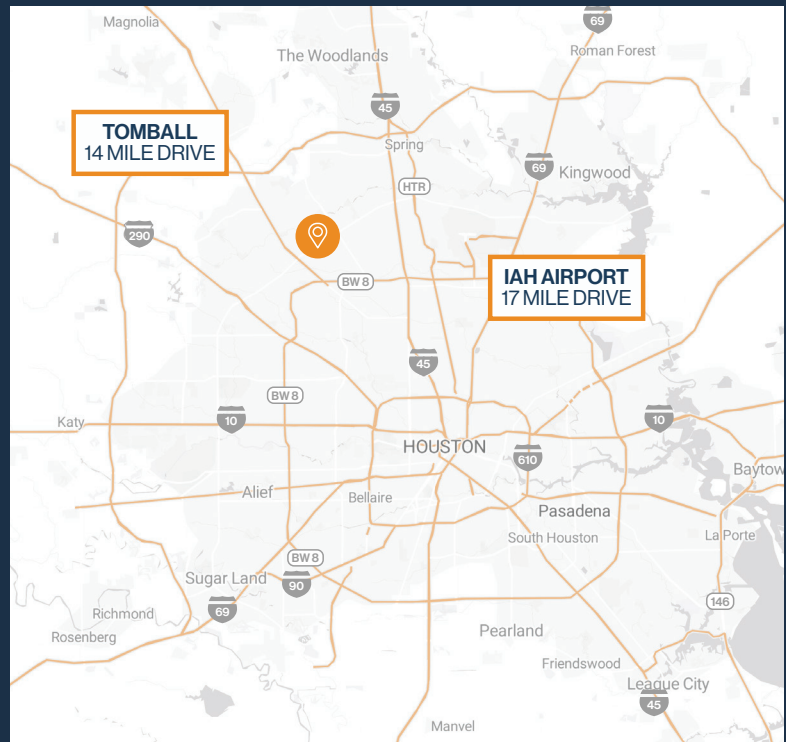
3-PHASE POWER (240 V)



FENCED AND GATED



2,500 – 15,600 SF SUITES AVAILABLE



RYAN YOUNG

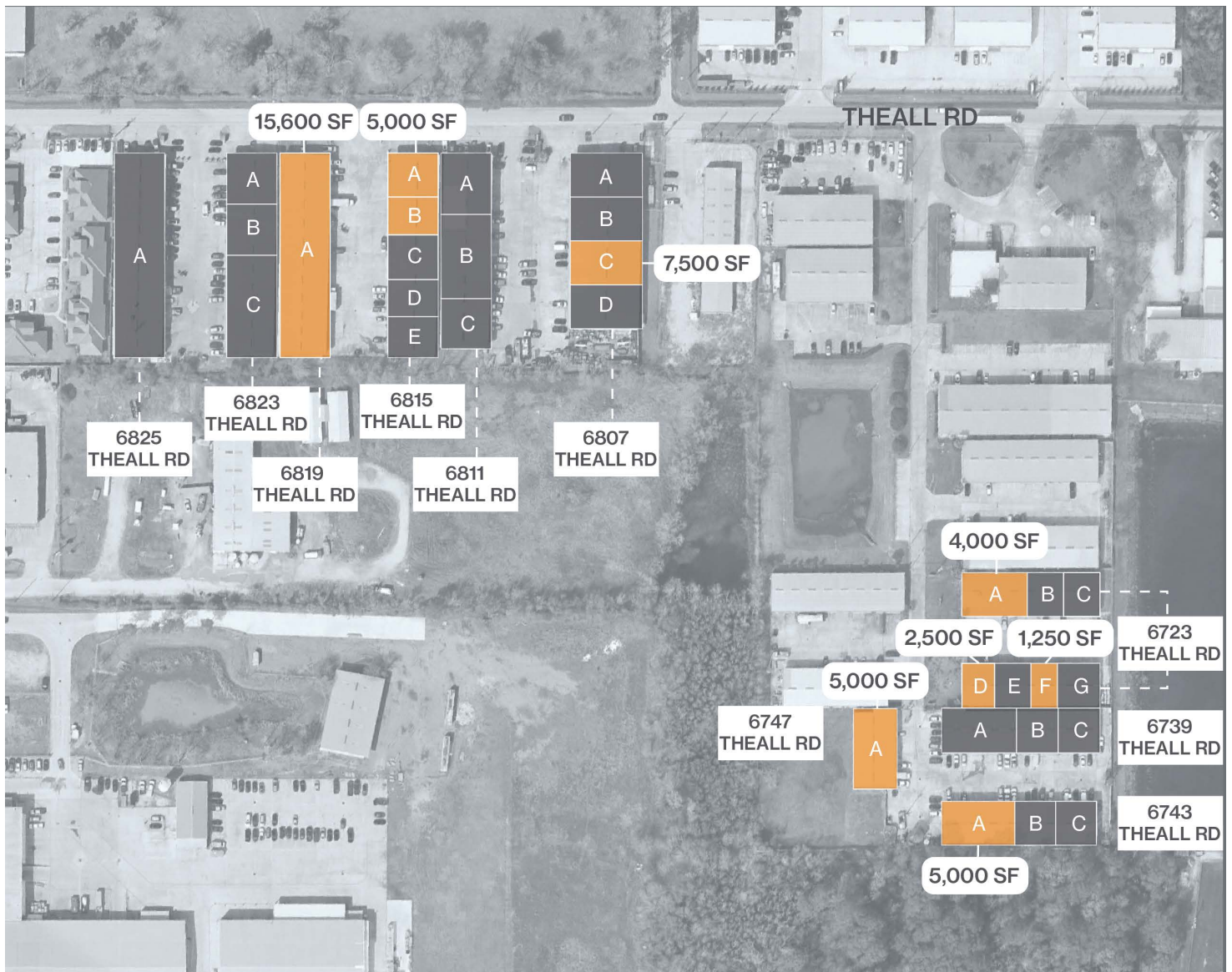
281.584.3320

ryan.young@fort-companies.com



This information is deemed reliable, however, Fort makes no guarantee, warranties, or representations as to the completeness or accuracy thereof.

SITE PLAN





THEALL BUSINESS PARK

6723-6825 THEALL RD
HOUSTON, TEXAS 77066

UNIT 6819-A – 15,600 SF

1,500 SF OFFICE / 14,100 SF WAREHOUSE

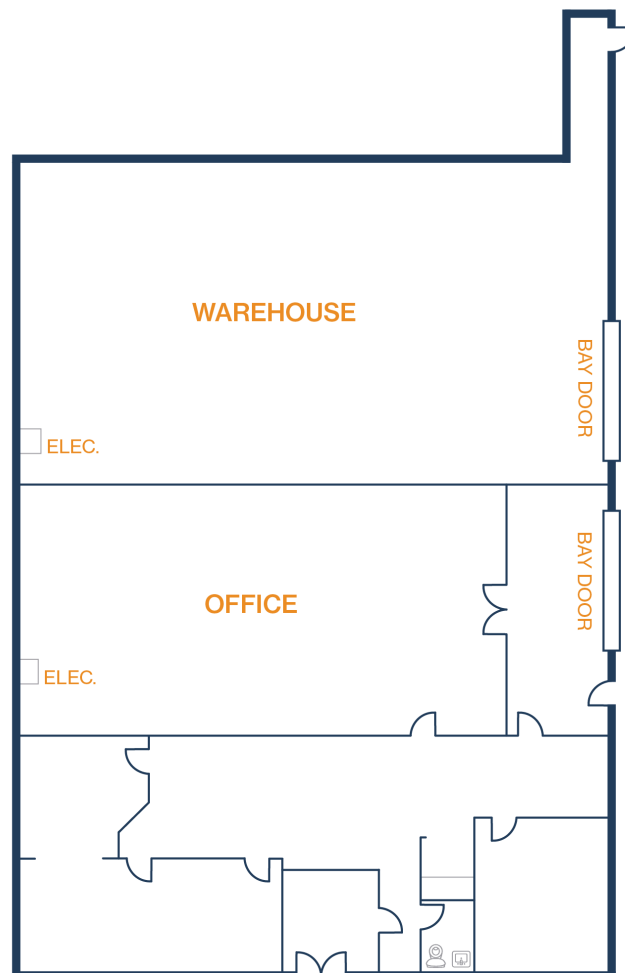
- 18' Clear Height
- (6) 12' x 14' Grade Level Doors
- Fenced and Gated
- Fully Insulated Warehouse



UNIT 6815-A & B – 5,000 SF

990 SF OFFICE / 4,010 SF WAREHOUSE

- 18' Clear Height
- (2) 12' x 14' Grade Level Doors
- Fully Insulated Warehouse
- Fenced and Gated





FORT
LEASING

THEALL BUSINESS PARK

6723-6825 THEALL RD
HOUSTON, TEXAS 77066

UNIT 6807-C – 7,500 SF

1,300 SF OFFICE / 6,200 SF WAREHOUSE

- 18' Clear Height
- (1) 12' x 14' Grade Level Door
- Fully Insulated
- Upstairs Office Space



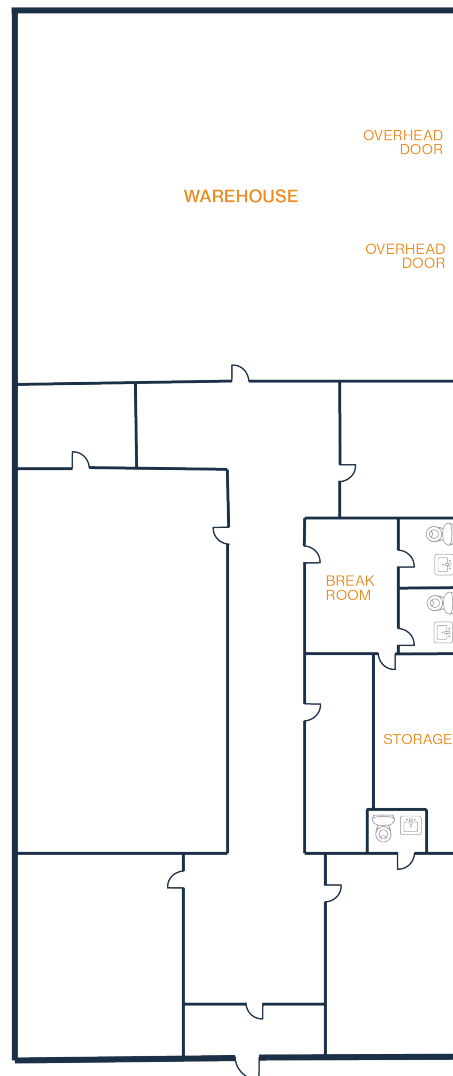
RYAN YOUNG
281.584.3320
ryan.young@fort-companies.com

This information is deemed reliable, however, Fort makes no guarantee, warranties, or representations as to the completeness or accuracy thereof.

UNIT 6723-A – 4,000 SF

1,240 SF OFFICE / 2,760 SF WAREHOUSE

- 18' Clear Height
- (2) 12' x 14' Grade Level Door
- Fully Insulated





FORT
LEASING

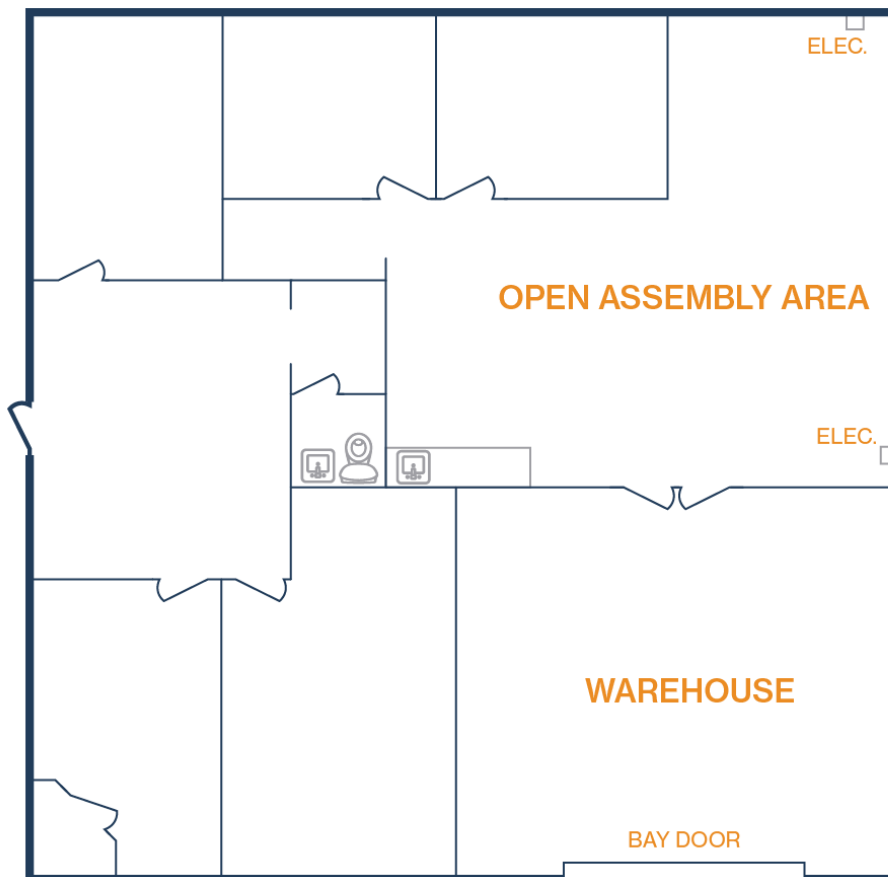
THEALL BUSINESS PARK

6723-6825 THEALL RD
HOUSTON, TEXAS 77066

UNIT 6723-D – 2,500 SF

775 SF OFFICE / 1,725 SF WAREHOUSE

- 18' Clear Height
- Fully Insulated Warehouse
- Fenced and Gated
- (1) 12' X 14' Grade-Level Door



RYAN YOUNG
281.584.3320
ryan.young@fort-companies.com

This information is deemed reliable, however, Fort makes no guarantee, warranties, or representations as to the completeness or accuracy thereof.



FORT
LEASING

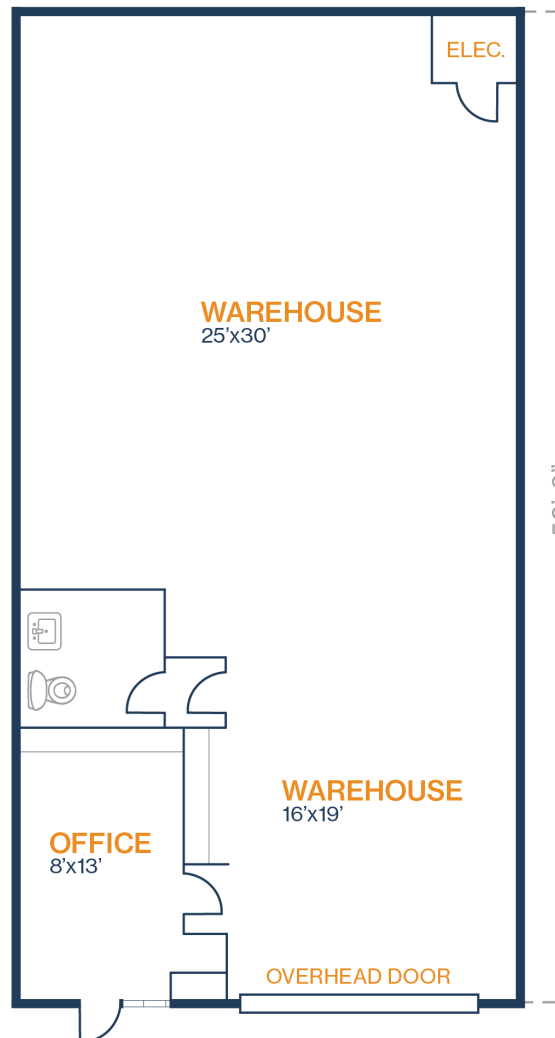
THEALL BUSINESS PARK

6723-6825 THEALL RD
HOUSTON, TEXAS 77066

UNIT 6723-F – 1,250 SF

388 SF OFFICE / 863 SF WAREHOUSE

- 18' Clear Height
- (1) 12' x 14' Grade Level Door
- Fully Insulated



RYAN YOUNG
281.584.3320
ryan.young@fort-companies.com

This information is deemed reliable, however, Fort makes no guarantee, warranties, or representations as to the completeness or accuracy thereof.

UNIT 6743-A – 5,000 SF

1,575 SF OFFICE / 3,425 SF WAREHOUSE

- 18' Clear Height
- (2) 12' x 14' Grade Level Doors
- Break Room
- Private Offices

