



**Street Commercial Real Estate**  
522 Lander St #200 Reno, NV 89509  
(775) 852-5225  
www.street-cre.com

FOR LEASE

**7930 SUGAR PINE CT**  
**RENO, 89523**

**STE A & STE B**



**Matthew Harris**  
Principal - Broker  
Matt.Harris@street-cre.com  
NV RE #B.1002868  
O: (775) 852-5225 Ext 1002  
C: (775) 250-4684



**Ben Harris**  
Principal  
Ben.Harris@street-cre.com  
NV RE #S.0187049  
O: (775) 852-5225 Ext 1001  
C: (775) 221-6846



**Christian Stolo**  
Industrial Associate  
Christian.Stolo@street-cre.com  
NV RE #S.0196067  
O: (775) 852-5225 Ext 1003  
C: (775) 842-7450



# PROPERTY DETAILS

## 7930 SUGAR PINE CT

- APN 212-050-09 23
- 23,244 Total SF
- 5 Grade Level Doors
- 1400+ Amps 3 Phase Power
- Option for Fenced Yard

Street Commercial Real Estate is pleased to present this 23,224 SF flex industrial building for lease.

This multi-tenant building is located in the desirable West Reno sub-market and is 1.5 Mi to I-80, making it conveniently close to the main vessel into Northern California and Downtown Reno. This property is currently comprised of a 7,693 SF unit and a 15,551 SF unit but can be combined for a single occupier.

Neighboring tenants include Patagonia, BeaverFit, and Nutrient Survival.



# BUILDING FLOORPLAN 7930 SUGAR PINE CT

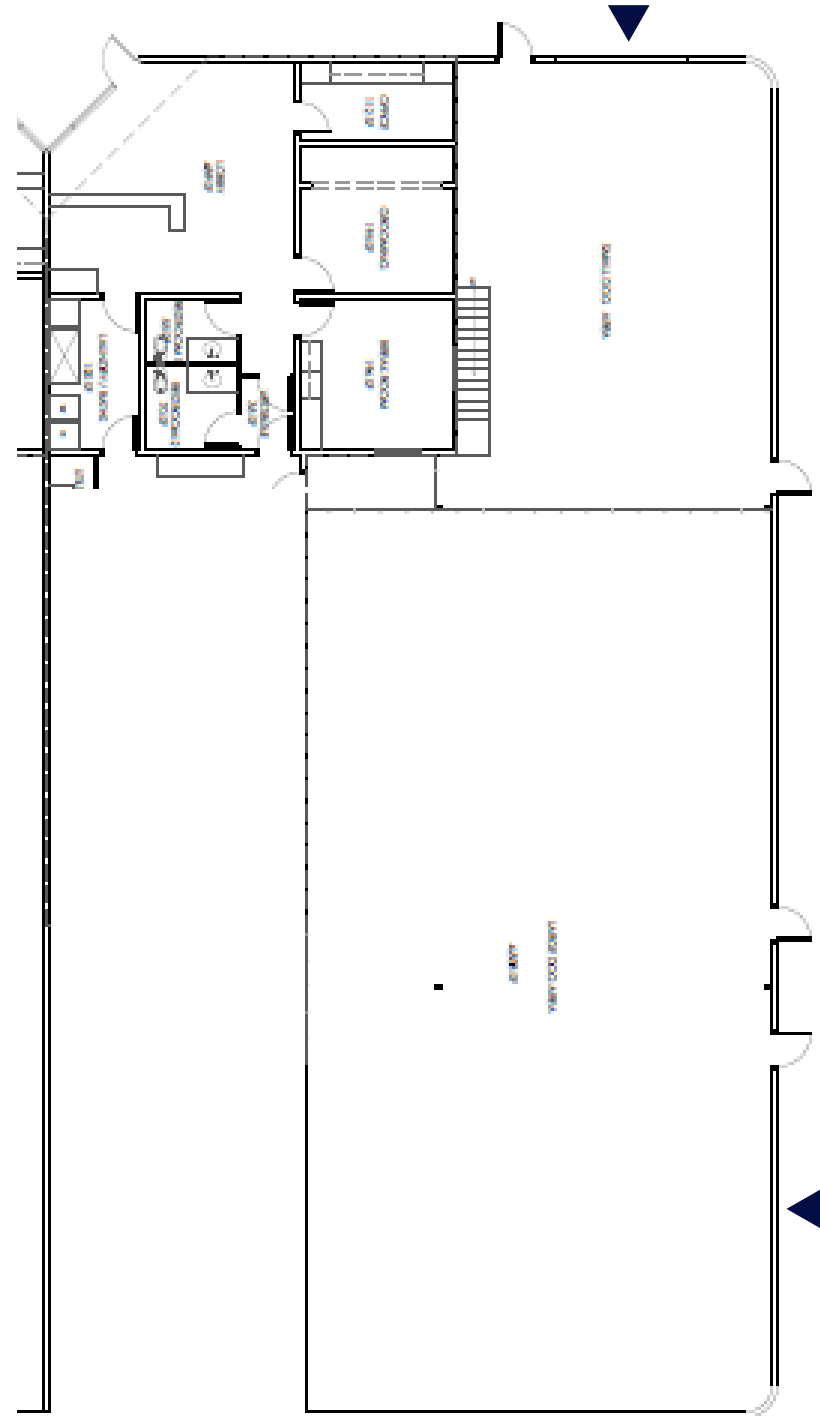


# STE A

## UNIT FEATURES

### 7930 SUGAR PINE CT

- 7,693 SF
- +/- 1,272 SF of Office
- 18' Clear Height
- 400 AMP (TBV)
- (2) Drive in Doors



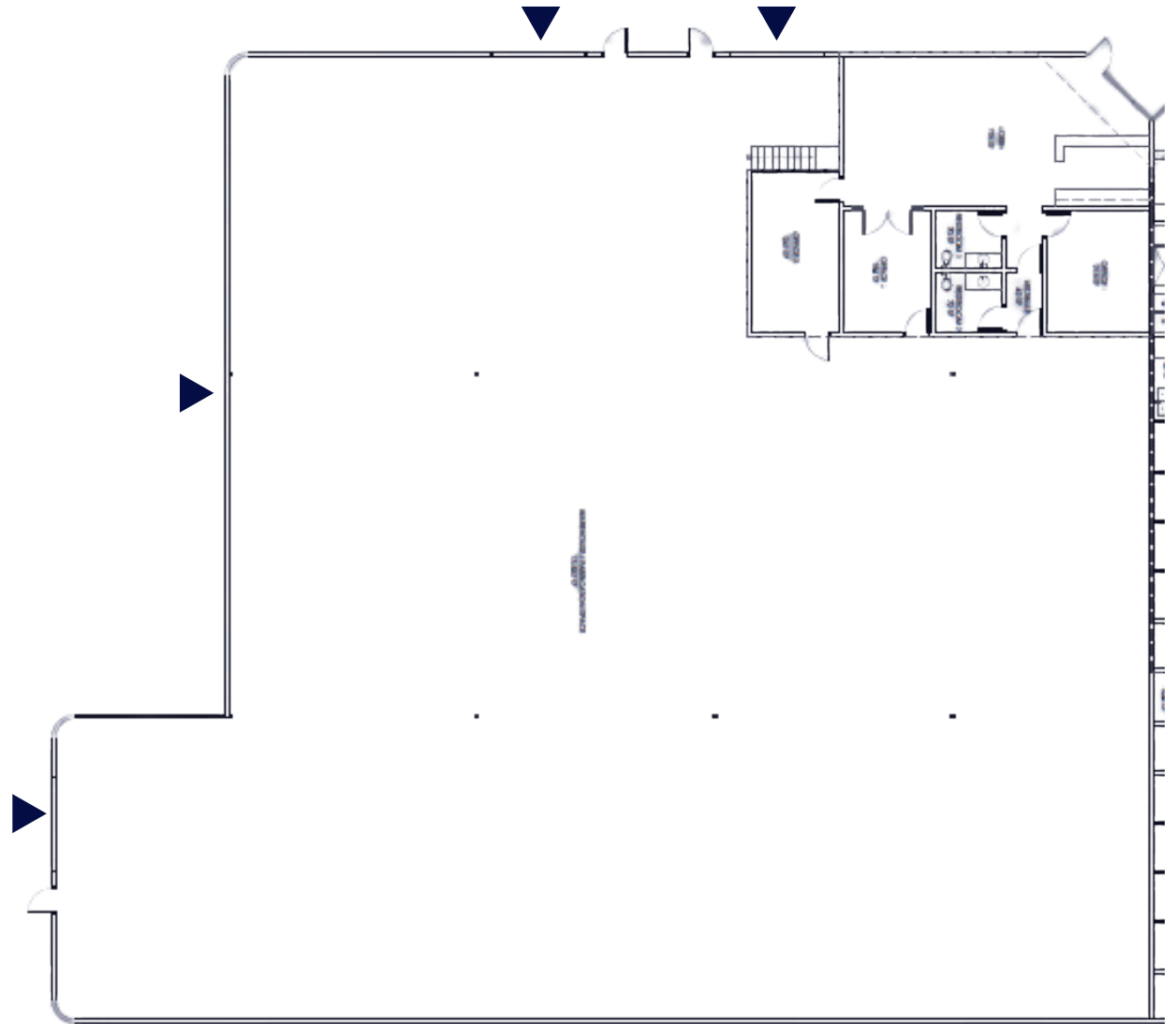


# STE B

## UNIT FEATURES

### 7930 SUGAR PINE CT

- 15,551 SF
- +/- 1,600 SF of Office
- 18' Clear Height
- 1,600 AMP (TBV)
- (4) Drive in Doors
- Option for (1) Dock High
- Option for Fenced Yard







LOCATION  
**HIGHLIGHTS**  
7930 SUGAR PINE CT

- West Reno Industrial Submarket
- Quick Access to I-80
- Along West Bank of Truckee River
- MUW4 Zoning allows for wide range of uses








# CONTACT US

 522 Lander St #200  
Reno, NV 89509

 (775) 852-5225

 [www.street-cre.com](http://www.street-cre.com)

 [admin@street-cre.com](mailto:admin@street-cre.com)

STREET COMMERCIAL REAL ESTATE

For any questions regarding the industrial market here in the Reno area, or inquiries on a specific property, contact us today!

## LANDLORD SERVICES TEAM



### **Matthew Harris**

Principal - Broker  
NV RE #B.1002868  
O. (775) 852-5225 Ext 1002  
C. (775) 250-4684  
[matt.harris@street-cre.com](mailto:matt.harris@street-cre.com)



### **Benjamin Harris**

Principal  
NV RE# S.0187049  
O. (775) 852-5225 Ext 1001  
C. (775) 221-6846  
[ben.harris@street-cre.com](mailto:ben.harris@street-cre.com)



### **Christian Stolo**

Associate- Landlord Services  
NV RE #S.0196067  
O. (775) 852-5225 Ext 1003  
C. (775) 842-7450  
[christian.stolo@street-cre.com](mailto:christian.stolo@street-cre.com)