

205 STOCKHAM

FOR LEASE



PROPERTY DETAILS

205 Stockham Blvd., Rigby, ID 83442

- Retail office or medical office available
- 2,658 SF in Suite C-2 available
 - » Seven offices, reception, open space, restroom
 - » Updated finishes

2025 DEMOS



EST. POPULATION

1 MILE » **5,425**
3 MILE » **16,106**
5 MILE » **25,622**



EST. HOUSEHOLDS

1 MILE » **1,846**
3 MILE » **5,091**
5 MILE » **8,051**



EST. AVERAGE HH INCOME

1 MILE » **\$90,671**
3 MILE » **\$95,767**
5 MILE » **\$100,961**

NEWMARK



MOUNTAIN WEST

DUSTIN MORTIMER

dmortimer@newmarkmw.com

direct 208.874.0230

[View Profile](#)

FULL SERVICE
COMMERCIAL REAL ESTATE

3345 Chasewood Drive

Ammon, ID 83406

Office 208.874.0230

www.newmarkmw.com

205 STOCKHAM

FLOOR PLAN



SUITE C-2
2,658 SF
AVAILABLE

NEWMARK



MOUNTAIN WEST

DUSTIN MORTIMER

dmortimer@newmarkmw.com

direct 208.874.0230

[View Profile](#)

**FULL SERVICE
COMMERCIAL REAL ESTATE**

3345 Chasewood Drive

Ammon, ID 83406

Office 208.874.0230

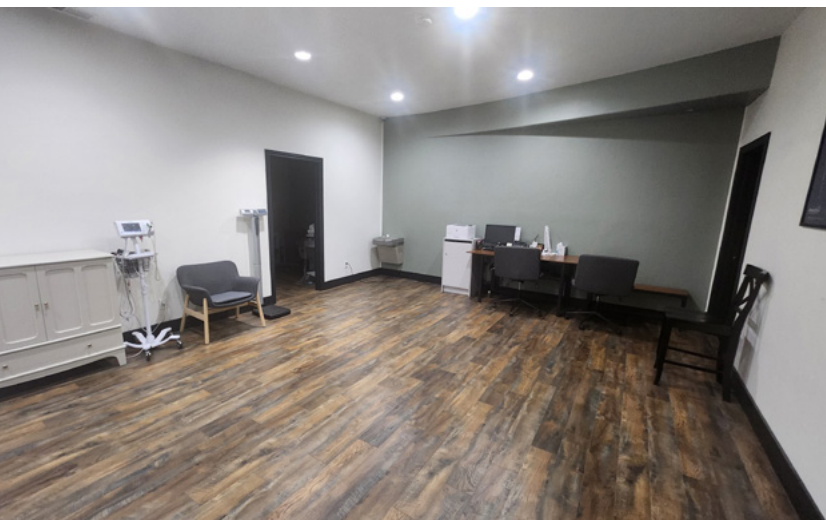
www.newmarkmw.com



NEWMARK

MOUNTAIN WEST

DUSTIN MORTIMER
 dmortimer@newmarkmw.com
 direct 208.874.0230
[View Profile](#)

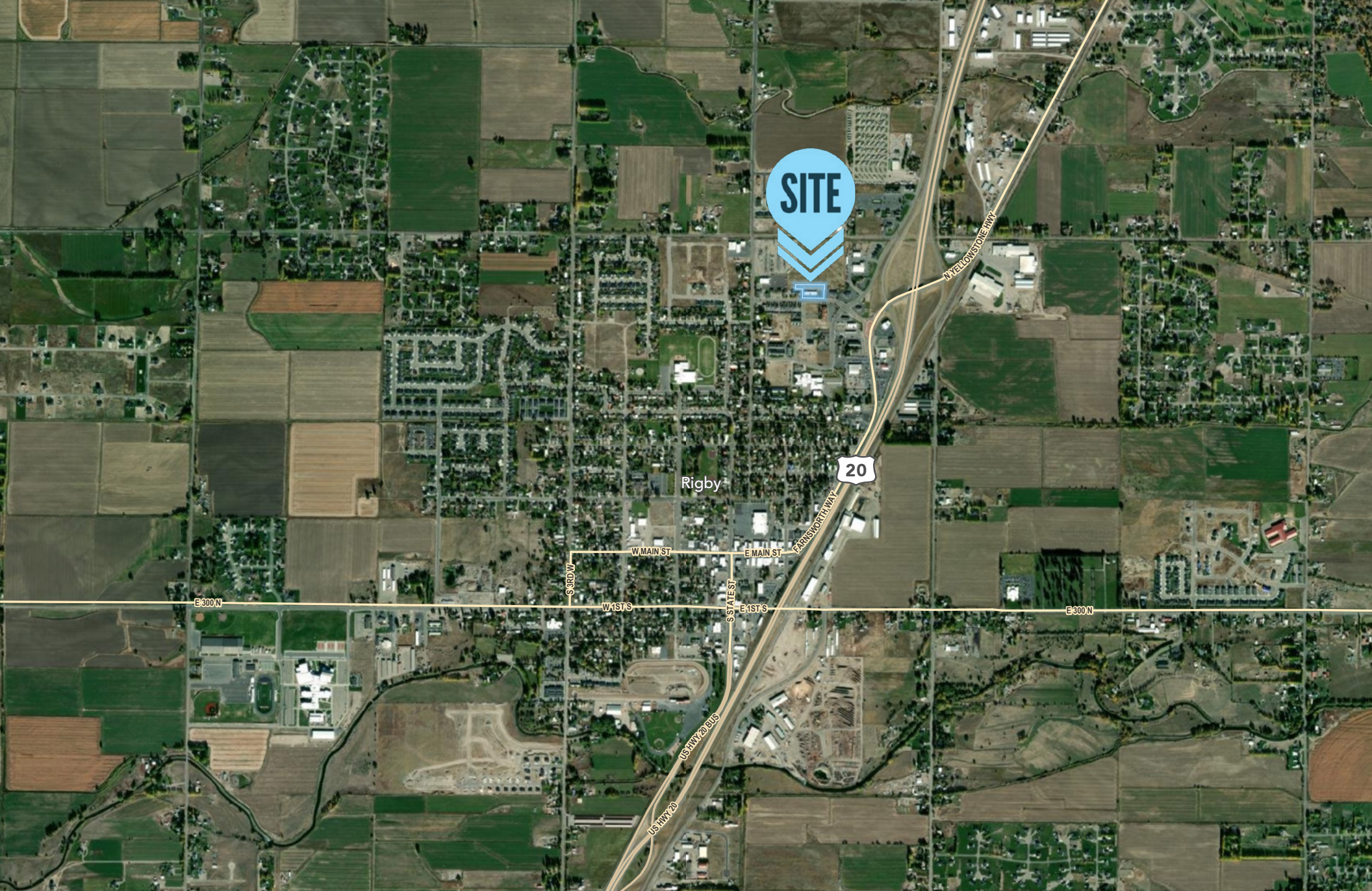


**FULL SERVICE
 COMMERCIAL REAL ESTATE**
 3345 Chasewood Drive
 Ammon, ID 83406
 Office 208.874.0230
www.newmarkmw.com



DUSTIN MORTIMER
dmortimer@newmarkmw.com
direct 208.874.0230
[View Profile](#)

**FULL SERVICE
COMMERCIAL REAL ESTATE**
3345 Chasewood Drive
Ammon, ID 83406
Office 208.874.0230
www.newmarkmw.com



DUSTIN MORTIMER
dmortimer@newmarkmw.com
direct 208.874.0230
[View Profile](#)

**FULL SERVICE
COMMERCIAL REAL ESTATE**
3345 Chasewood Drive
Ammon, ID 83406
Office 208.874.0230
www.newmarkmw.com