

7420 Dry Creek Suite 200 (Second Floor) Boulder, CO

17,235 Square Feet

Plug and Play Office For Lease!

Move-in Ready:

Premier Class-A office space in the heart of Boulder County's innovation corridor

Furniture Included:

Fully furnished, plug-and-play environment — includes high-quality office furniture

Strategically Located:

Strategically located just 7 miles north of Downtown Boulder and 35 miles from Denver with excellent regional access to Hwy 52 and Hwy 119 for seamless connectivity

Boulder Tech Center:

Surrounded by top-tier technology and research companies, including the nearby IBM campus

Professionally Designed:

Modern architecture and expansive floor plate ideal for collaborative or flexible layouts

Ample Parking:

Easy access and convenient parking

Full Floor:

Mix of private office and open bullpen



TEBO
PROPERTIES

Contact us for more information:

leasing@teboproperties.com

303-447-8326

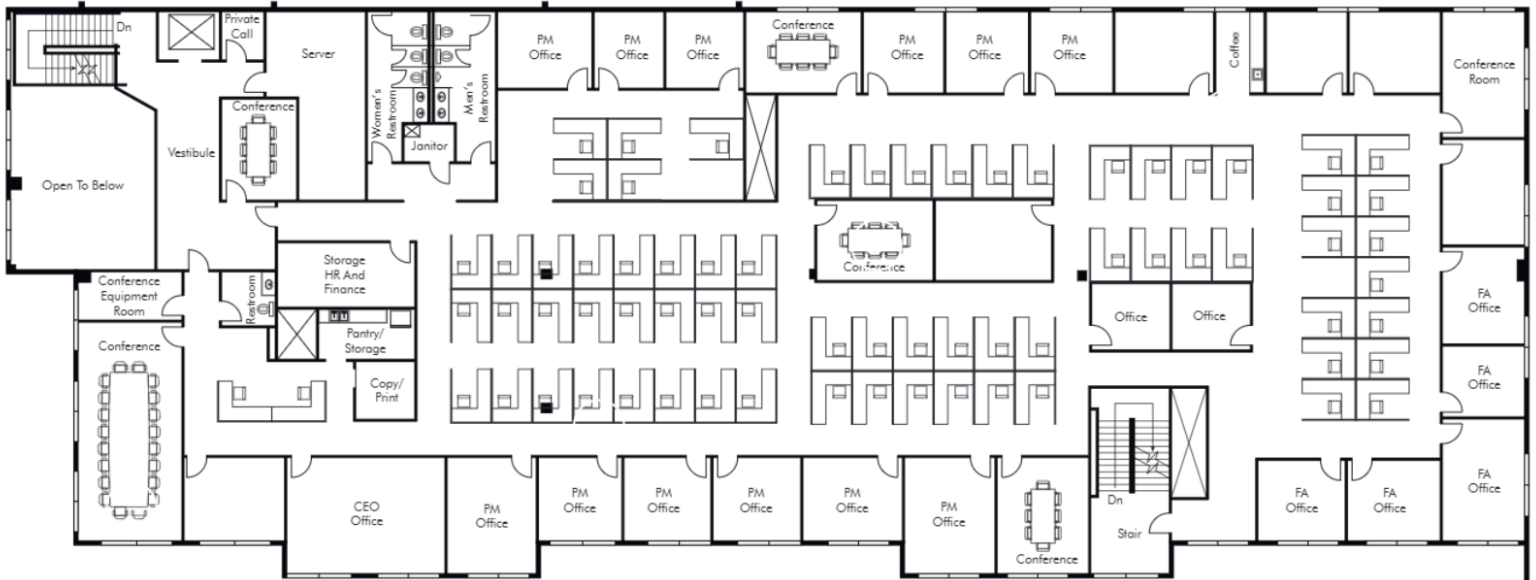
www.TEBOproperties.com

FULL FLOOR OFFICE FOR LEASE

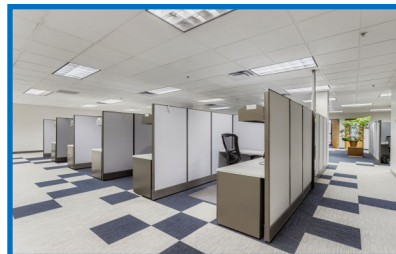


TEBO
PROPERTIES

7420 Dry Creek, Niwot, CO



Suite	Square Footage	Price (2025 NNN estimate)
Second Floor	17,235 SF	CALL FOR RATE!



TEBO
PROPERTIES

Contact us for more information:
leasing@teboproperties.com
 303-447-8326
www.TEBOproperties.com