

For lease

Office / medical space



Floor	Availability	Possession	Use
Part 4 th floor	1,200 SF	Arranged	Office / medical
Part lower level	11,935 SF	Immediate	Office / storage

Property specifications

Rental rate	<ul style="list-style-type: none"> 4th floor: \$27.50 PSF plus \$3.65 PSF utilities Lower level: price upon request
Building highlights	<ul style="list-style-type: none"> Ample parking available 24/7 building access On-site management Additional storage space available
Location	<ul style="list-style-type: none"> Located directly off the Seaford-Oyster Bay Expressway Approx. 2 miles from Syosset LIRR train station Situated in the Crossways Business Park

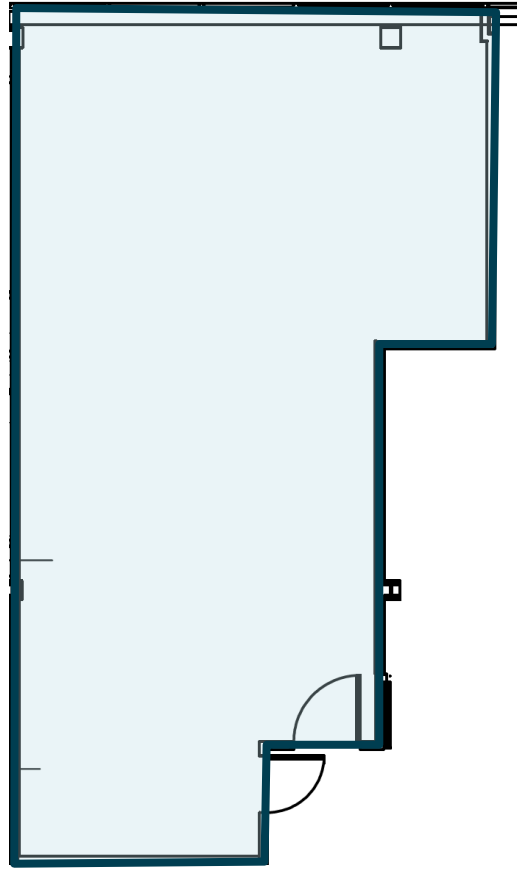
20 Crossways Park Dr N Woodbury, NY

Kyle Crennan
 Managing Director
 +1 631 962 2896
kyle.crennan@jll.com

Joseph Lopresti
 Executive Vice President
 +1 631 962 7384
joseph.lopresti@jll.com

Brian Weigold
 Associate
 +1 631 962 2895
brian.weigold@jll.com

Part 4th floor: 1,200 SF



AMENITIES

1. Syosset Hospital
2. Panera Bread
3. Chipotle
4. Rare 650
5. Equinox
6. The Fox Hollow
7. Syosset-Woodbury Park
8. Best Western
9. Starbucks

