

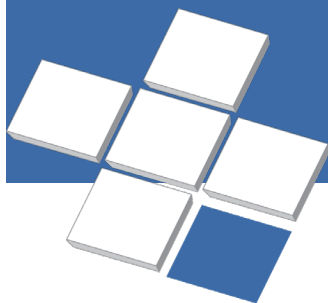
Ground Floor Medical Office Space for Lease

Superior Medical Center

3 Superior Drive, Superior, CO 80027

For Leasing Information:

Leslie Price
Director, Leasing
Phone: 858-794-1900
lprice@pmbres.com
www.pmbres.com



PMB
Real Estate Services
Real Estate Management Solutions for Healthcare

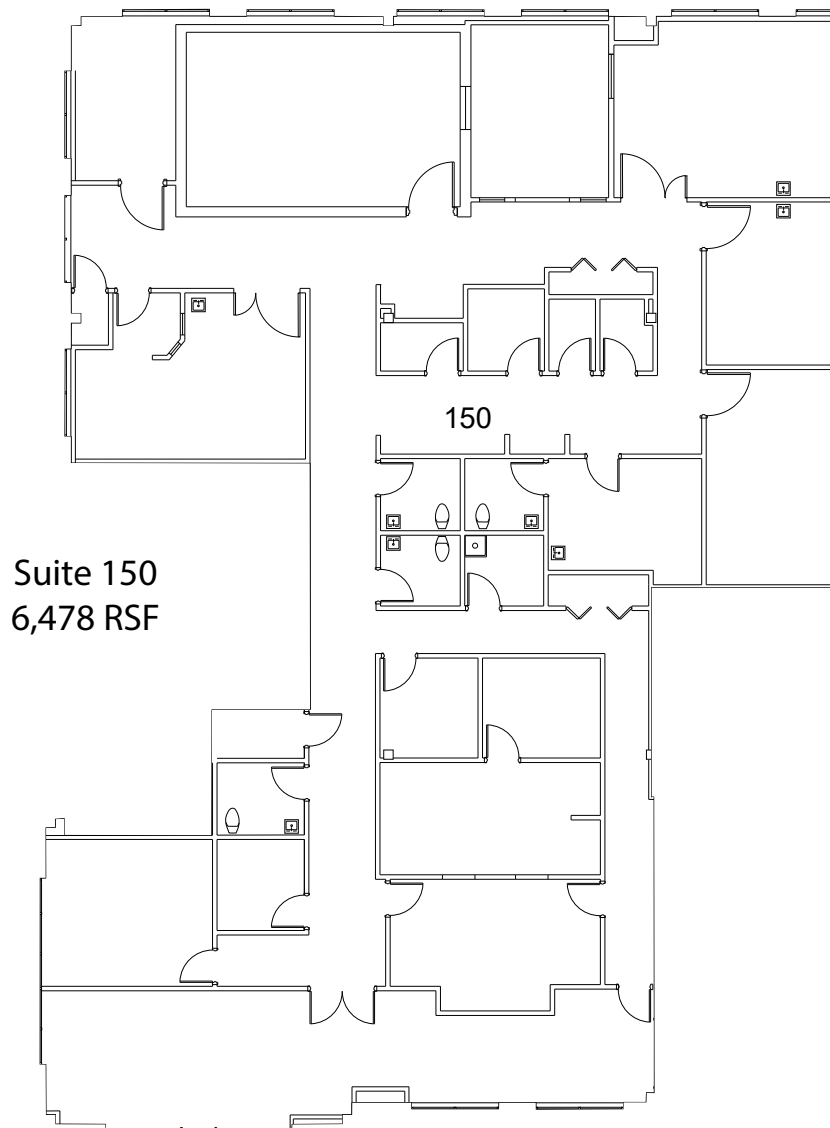


- Located in the emerging downtown Superior
- Adjacent to The Sport Stable, an indoor sports facility that includes roughly 150,000 SF of indoor recreation including 2 1/2 indoor hockey rinks, indoor soccer fields, batting cages, volleyball and basketball courts, golf simulator, 5,000 SF full service restaurant, coffee shop, and sporting goods store
- 58,000 SF Building with 1st Floor space available
- Existing Tenants include Intermountain Health (primary care/women's care), Boulder Community Health (urgent care/family care), Cornerstone Orthopedics, and Branin Dentistry
- Attached, 4-story, covered parking garage with 4.5:1,000 ratio
- Outstanding highway visibility
- Easy access to US36 and the Northwest Parkway
- Wide variety of Retail in close proximity



3 Superior Drive

1st Floor Availabilities



For Leasing Information:
Leslie Price | Director, Leasing
Phone: 858-794-1900 | lprice@pmbres.com
www.pmbres.com



PMB Real Estate Services