



FOR LEASE



24001 NE SANDY BLVD

Industrial Outdoor Storage

Up to ± 37,769 Total SF on 18.4 Acres | Will Divide

24001 NE Sandy Blvd, Wood Village, OR 97060

- Zoned Industrial Commercial Allowing Transportation and Yard Storage
- Four Buildings with Fenced Yard Ranging from 8,848 SF to 15,000 SF
- Immediate Access to I-84 and NE 238th Dr
- 7 Miles from the only 4-Way Freeway Interchange in the State of Oregon
- Truck Maintenance and Cleaning Facilities with a Supporting Office

MARK CHILDS, SIOR

Principal Broker | Licensed in OR & WA

503-542-4350 | markc@capacitycommercial.com

DANIEL HELM, SIOR

Senior Vice President | Licensed in OR & WA

503-789-5750 | dhelm@capacitycommercial.com

DANIEL SAYLES

Senior Vice President | Licensed in OR & WA

503-542-4351 | dsayles@capacitycommercial.com



PROPERTY SUMMARY

**FOR
LEASE**



Office Building



Maintenance Building

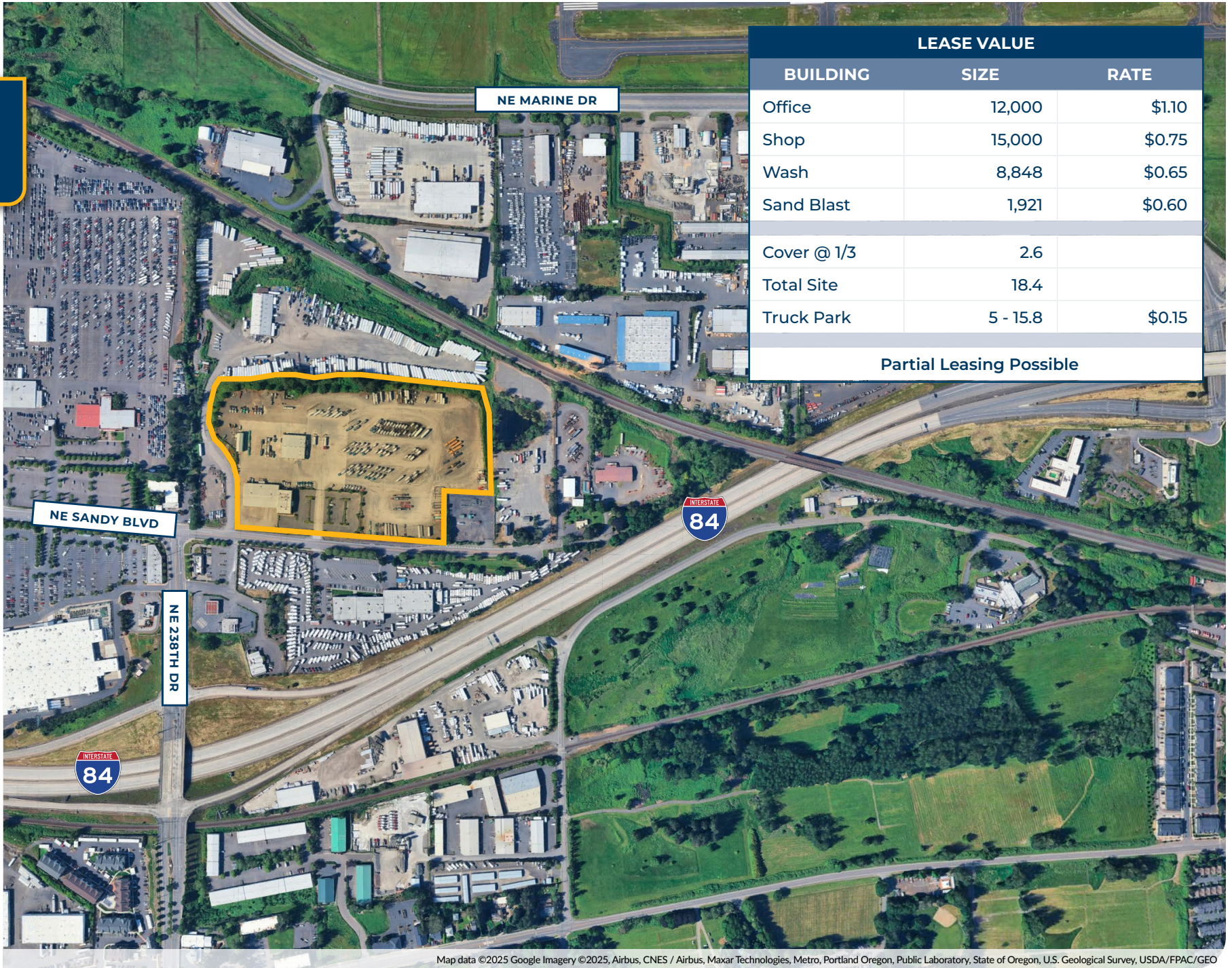
PROPERTY DETAILS	
Address	24001 NE Sandy Blvd, Wood Village, OR 97060
Total SF	37,769 SF
Office Building SF	12,000 SF
Shop Building SF	15,000 SF
Utility Building SF	8,848 SF
Clean Building SF	1,921 SF
Lot Size	5 - 18.4 Acres
Clear Height	14' - 26'
Above Ground Fueling	Four Lane Fueling 35k Gallon Diesel 5k Gallon Gas
Wash Lane	Drive Through w/ Well Water Source
Zoning	Industrial Commercial
Availability	December 1, 2025



Maintenance Bays



LEASE VALUE



LEASE VALUE		
BUILDING	SIZE	RATE
Office	12,000	\$1.10
Shop	15,000	\$0.75
Wash	8,848	\$0.65
Sand Blast	1,921	\$0.60
Cover @ 1/3	2.6	
Total Site	18.4	
Truck Park	5 - 15.8	\$0.15
Partial Leasing Possible		

Map data ©2025 Google Imagery ©2025, Airbus, CNES / Airbus, Maxar Technologies, Metro, Portland Oregon, Public Laboratory, State of Oregon, U.S. Geological Survey, USDA/FPAC/GEO



PHOTO LIBRARY



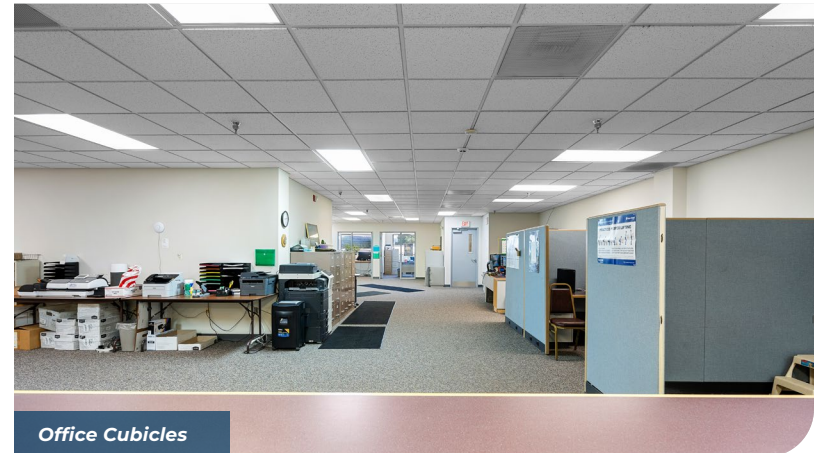
Paved Yard



Gravelled Yard



Office Reception



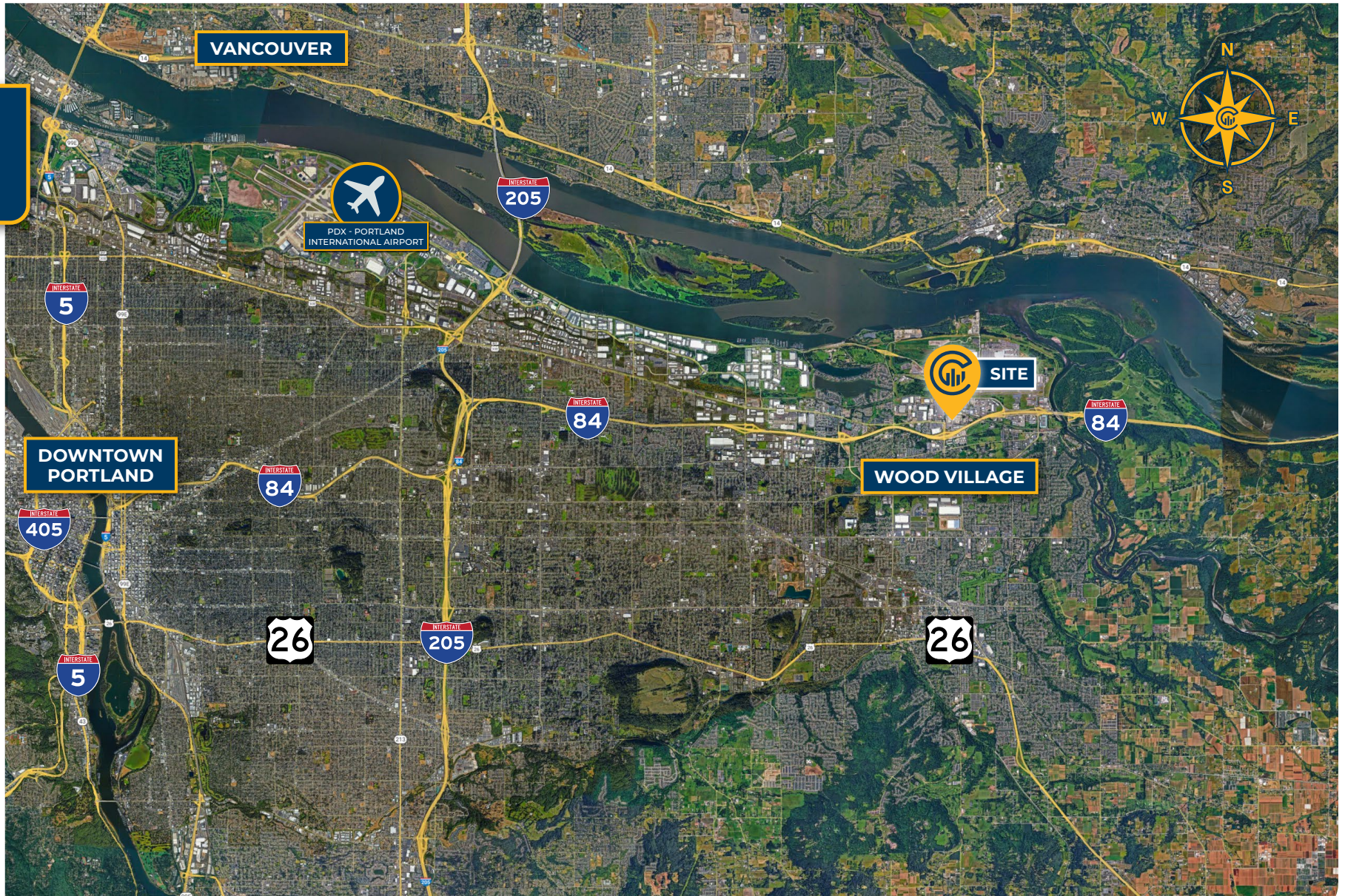
Office Cubicles



Wash Bay



LOCAL AERIAL MAP



*Average Daily Traffic Volume | Traffic Counts are Provided by REGIS Online at SitesUSA.com ©2025 | Map data ©2025 Google Imagery ©2025, Airbus, CNES / Airbus, Maxar Technologies, Metro, Portland Oregon, Public Laboratory, State of Oregon, U.S. Geological Survey, USDA/FPAC/GEO

MARK CHILDS, SIOR
Principal | Licensed in OR & WA
503-542-4350
markc@capacitycommercial.com

DANIEL HELM, SIOR
Senior Vice President | Licensed in OR & WA
503-789-5750
dhelm@capacitycommercial.com

DANIEL SAYLES
Senior Vice President | Licensed in OR & WA
503-542-4351
dsayles@capacitycommercial.com